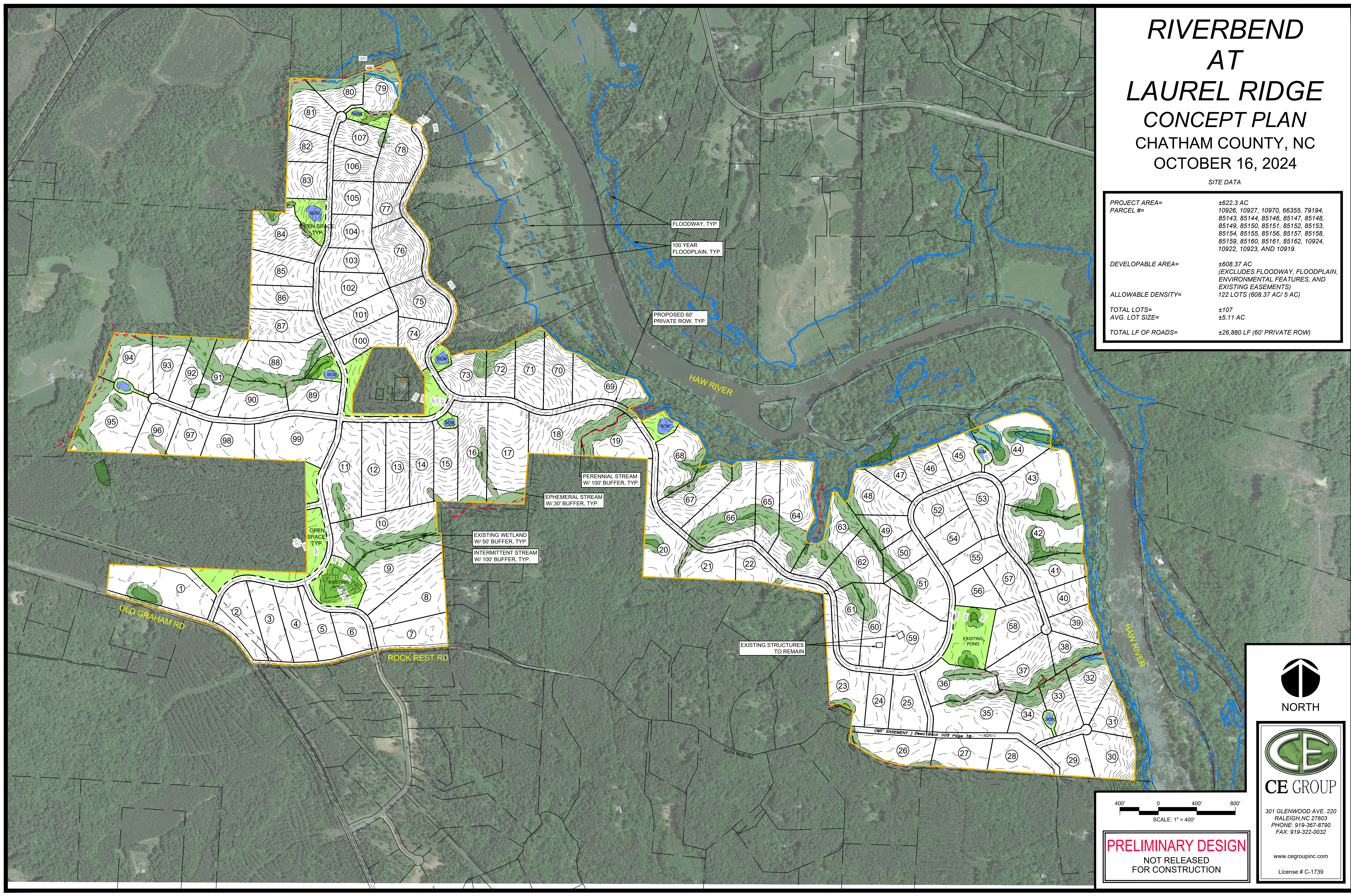
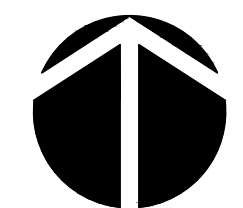



RIVERBEND AT LAUREL RIDGE CONCEPT PLAN CHATHAM COUNTY, NC OCTOBER 16, 2024

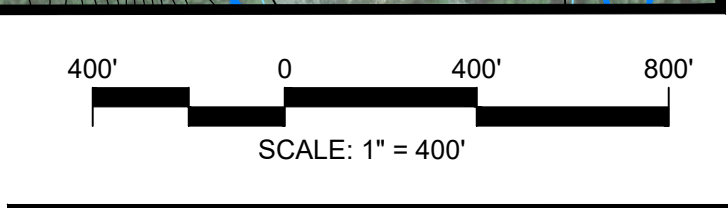
SITE DATA

PROJECT AREA= PARCEL #=	±622.3 AC 10926, 10927, 10970, 66355, 79194, 85143, 85144, 85146, 85147, 85148, 85149, 85150, 85151, 85152, 85153, 85154, 85155, 85156, 85157, 85158, 85159, 85160, 85161, 85162, 10924, 10922, 10923, AND 10919.
DEVELOPABLE AREA=	±608.37 AC (EXCLUDES FLOODWAY, FLOODPLAIN, ENVIRONMENTAL FEATURES, AND EXISTING EASEMENTS)
ALLOWABLE DENSITY=	122 LOTS (608.37 AC/ 5 AC)
TOTAL LOTS=	±107
AVG. LOT SIZE=	±5.11 AC
TOTAL LF OF ROADS=	±26,880 LF (60' PRIVATE ROW)




 NORTH


CE GROUP
 301 GLENWOOD AVE. 220
 RALEIGH, NC 27603
 PHONE: 919-367-8790
 FAX: 919-322-0032
 www.cegroupinc.com
 License # C-1739



PRELIMINARY DESIGN
 NOT RELEASED
 FOR CONSTRUCTION