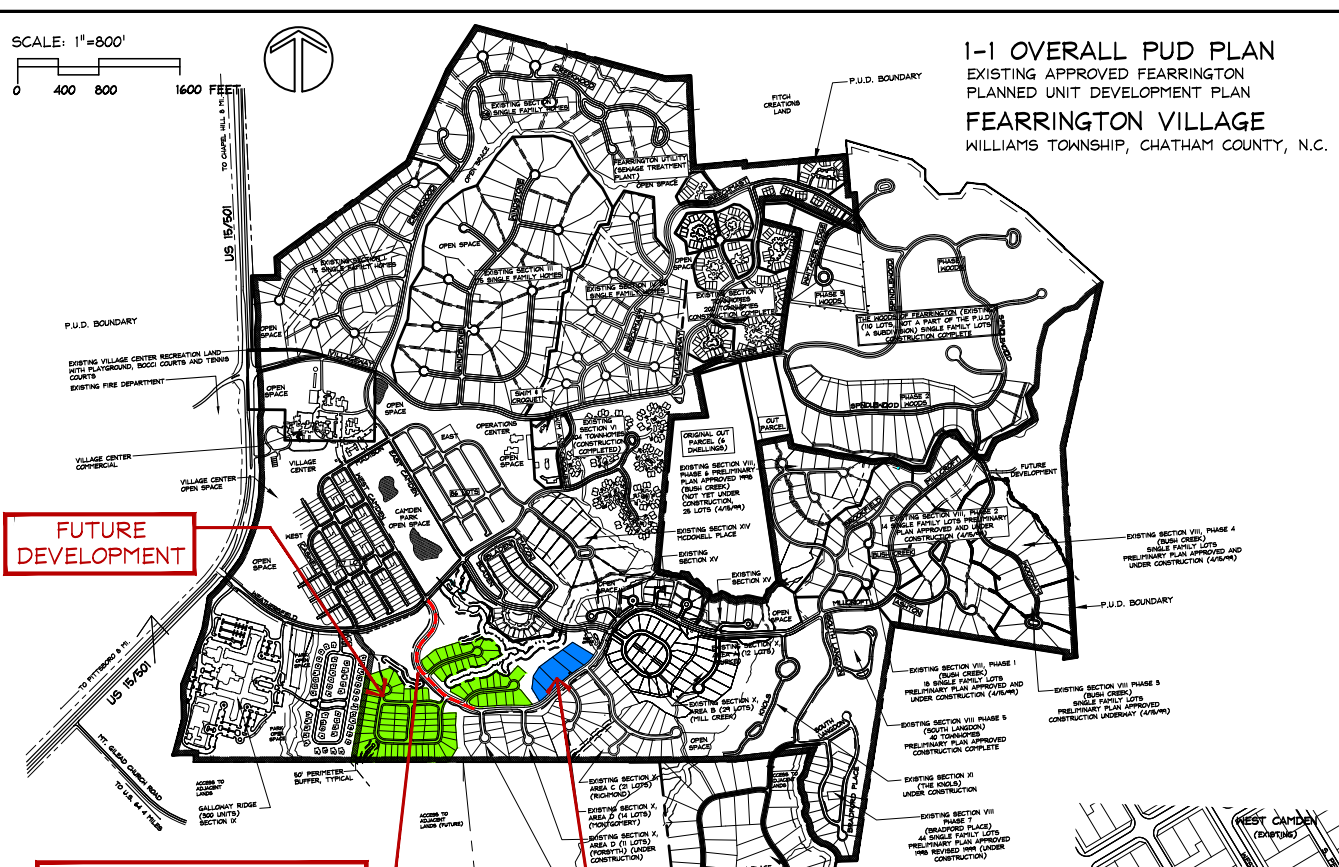


SCALE: 1"=800'



1-1 OVERALL PUD PLAN
 EXISTING APPROVED FEARRINGTON
 PLANNED UNIT DEVELOPMENT PLAN
FEARRINGTON VILLAGE
 WILLIAMS TOWNSHIP, CHATHAM COUNTY, N.C.

1-3 Section	Name	Allowed Dwellings
P.U.D. LANDS (1602 units)		
Parks/Open Space/ Commercial	Village Center	71
Section I	Creekside	57
Section II	Winstone	75
Section III	Beechmast	78
Section IV	Villageway Towns	203
Section V	Weatherfield	111
Section VI	Camden Park East	86
Section VII	Camden Park West	127
Section VIII Ph 1,2,3,4,6	Bush Creek	118
Section VIII Ph 5	Bush Creek Towne	40
Section VIII Ph 7	Bradford Place	43
Section IX	Galloway Ridge	300
Section X	South (undev)	200
Section XI	Knoll (undev)	26
Section XII	(Reserved)	
Section XIII	(Reserved)	
Section XIV Ph 1	South Camden	20
Section XIV Ph 2	McDowell Place	15
Section XV Ph 1	Millcroft Ph 1	26
Section XV Ph 2	Millcroft Ph 2	6
Section XVI	(Reserved)	
P.U.D. SUBTOTALS		1602

1-4 SECTION X AREA "M" EXISTING APPROVED / PROPOSED			
KEY	DESCRIPTION	UNITS	ACRES
A	LARGE SINGLE FAMILY LOTS (BURKE PLACE).....	12	11.40
B	SINGLE FAMILY LOTS (MILL CREEK).....	29	14.00
C	LARGE SINGLE FAMILY LOTS (RICHMOND).....	21	18.20
D	DWELLINGS (3 CUL-DE-SACS) (MONTGOMERY).....	35	22.30
E	COTTAGES (CAMDEN TYPE DWELLINGS).....	0	3.40
F	COTTAGES (FUTURE) (CAMDEN TYPE).....	12	3.90
G	COTTAGES (FUTURE) (GILFORD).....	15	5.80
H	COTTAGES (NOT USED).....	0	5.20
I	PASTURE.....	0	3.30
J	PASTURE.....	0	5.0
K	TOWNHOUSES (RUTHERFORD).....	12	4.90
L	SINGLE FAMILY LOTS (FUTURE) (CAMDEN TYPE).....	54	17.80
M	"LARGE" SINGLE FAMILY LOTS (PROPOSED).....	5	7.00
MAIL POST			
TOTAL DWELLINGS APPROVED SECTION X:		195	123.09

SECTION X - TOTAL UNIT ALLOWANCE 200:
 UNITS SHOWN: 195
 UNITS ALLOWED: 200 (5 REMAINING LOTS TO BE PLACED IN SECTION X OR ELSEWHERE IN P.U.D.)

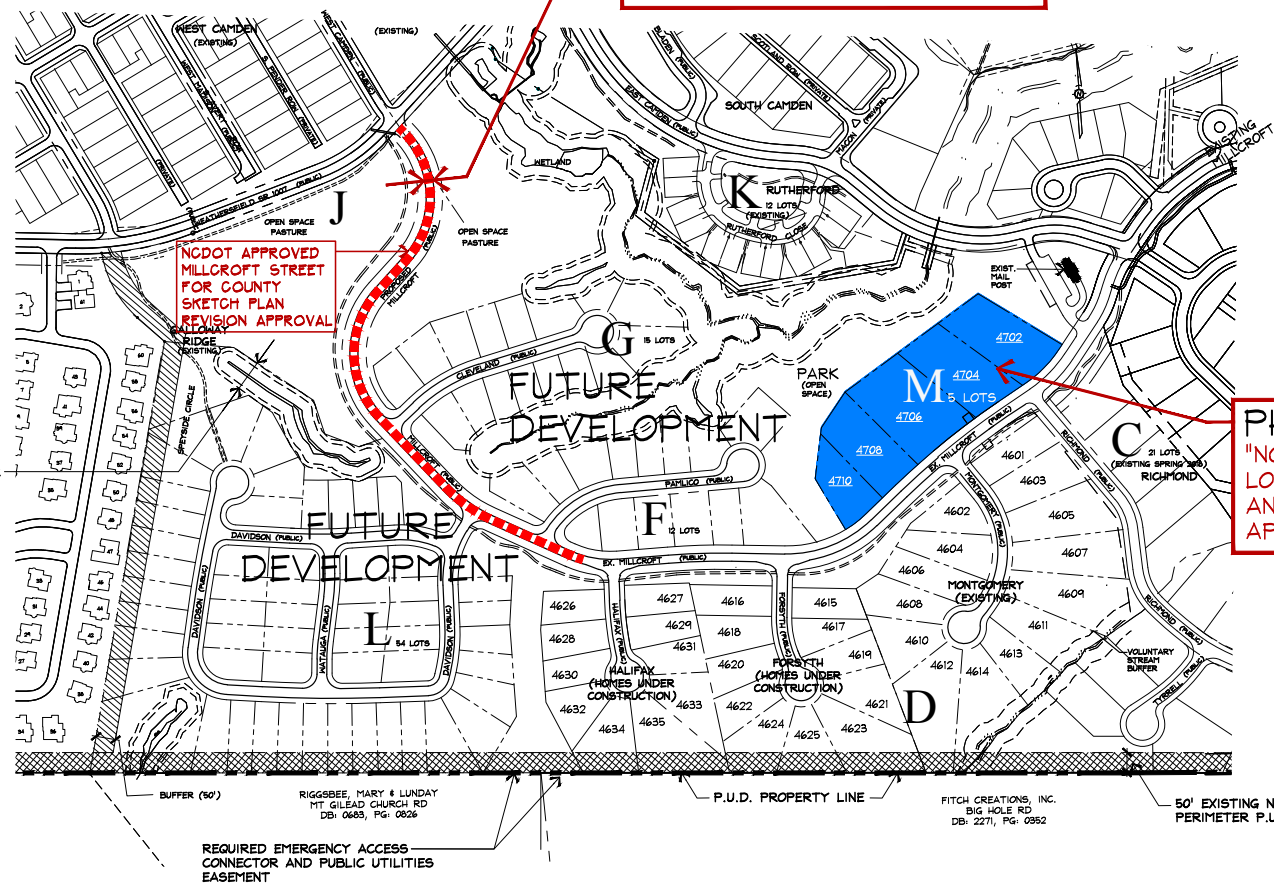
FUTURE DEVELOPMENT

PHASE 2
 MILLCROFT REALIGNMENT REQUEST FOR APPROVAL FOR SKETCH PLAN AND FOR PRELIMINARY PLAN

PHASE 1
 SECTION X, AREA "M" (SEE PLAN AT RIGHT FOR SKETCH PLAN REVISION AND REQUEST FOR PRELIMINARY PLAT APPROVAL OF "M")

PHASE 2
 SKETCH PLAN REVISION AND PRELIMINARY PLAN APPROVAL REQUEST FOR RE-ALIGNMENT OF AND COMPLETION OF MILLCROFT

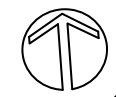
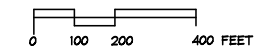
PHASE 1
 "NORTH RICHMOND" (5) LOTS SKETCH PLAN AND PRELIMINARY PLAN APPROVAL REQUEST



1-2 SECTION X, AREA "M", "NORTH RICHMOND" AND MILLCROFT RE-ALIGNMENT TO WEATHERSFIELD

SCALE: 1"=200'

SEE SHEET 2 FOR DETAILED ENLARGEMENT OF AREA 'M'



SECTION X, AREA "M", "NORTH RICHMOND"
FEARRINGTON P.U.D.
 SKETCH PLAN REVISION & PRELIMINARY PLAT APPROVAL FOR AREA "M"
 (AND)
 SKETCH PLAN REVISION AND PRELIMINARY PLAT FOR MILLCROFT COMPLETION

SHEET 1 OF 2

Proj. Coord. DCUS
 Date: 4/18/2022
 Revisions: 4/15/2022

SEARS DESIGN GROUP, P.A.
 LANDSCAPE ARCHITECTS
 625 W. Jones Street Raleigh, NC 27603
 (919)852-7000 Fax (919)852-8140
 email: searsdesign@searsdesign.com
 Sheet No. 1
 Of 2