

TAB 3-Generator Specs

SD050 | 4.5L | 50 kW
INDUSTRIAL DIESEL GENERATOR SET
EPA Certified Stationary Emergency



Standby Power Rating
50 kW, 63 kVA, 60 Hz

Prime Power Rating*
45 kW, 56 kVA, 60 Hz



*EPA Certified Prime ratings are not available in the US or its Territories

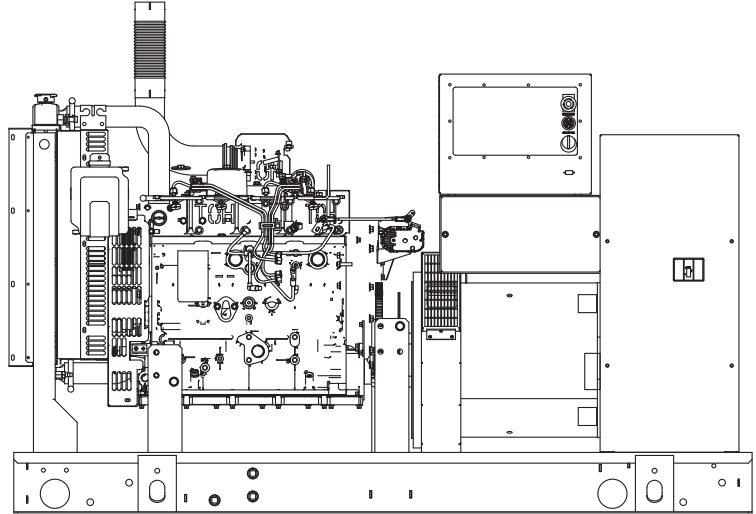


Image used for illustration purposes only

Codes and Standards

Not all codes and standards apply to all configurations. Contact factory for details.

UL2200, UL508, UL489, UL142

CSA C22.2

BS5514 and DIN 6271

SAE J1349

NFPA 37, 70, 99, 110

NEC700, 701, 702, 708

ISO 3046, 7637, 8528, 9001

NEMA ICS10, MG1, 250, ICS6, AB1

ANSI C62.41

IBC 2009, CBC 2010, IBC 2012, ASCE 7-05, ASCE 7-10, ICC-ES AC-156 (2012)

Powering Ahead

For over 50 years, Generac has provided innovative design and superior manufacturing.

Generac ensures superior quality by designing and manufacturing most of its generator components, including alternators, enclosures and base tanks, control systems and communications software.

Generac gensets utilize a wide variety of options, configurations and arrangements, allowing us to meet the standby power needs of practically every application.

Generac searched globally to ensure the most reliable engines power our generators. We choose only engines that have already been proven in heavy-duty industrial applications under adverse conditions.

Generac is committed to ensuring our customers' service support continues after their generator purchase.

TAB 3-Generator Specs

SD050 | 4.5L | 50 kW INDUSTRIAL DIESEL GENERATOR SET

EPA Certified Stationary Emergency

GENERAC | INDUSTRIAL
POWER

STANDARD FEATURES

ENGINE SYSTEM

- Oil Drain Extension
- Air Cleaner
- Fan Guard
- Stainless Steel Flexible Exhaust Connection
- Radiator Duct Adapter (Open Set Only)

Fuel System

- Fuel Lockoff Solenoid
- Secondary Fuel Filter

Cooling System

- Closed Coolant Recovery System
- UV/Ozone Resistant Hoses
- Factory-Installed Radiator
- Radiator Drain Extension

Electrical System

- Battery Charging Alternator
- Battery Cables
- Battery Tray
- Rubber-Booted Engine Electrical Connections
- Solenoid Activated Starter Motor

ALTERNATOR SYSTEM

- UL2200 GENprotect™
- Class H Insulation Material
- 2/3 Pitch
- Skewed Stator
- Brushless Excitation
- Sealed Bearing
- Full Load Capacity Alternator
- Protective Thermal Switch

GENERATOR SET

- Genset Vibration Isolation
- Separation of Circuits - High/Low Voltage
- Separation of Circuits - Dual Breakers
- Standard Factory Testing
- 2 Year Limited Warranty (Standby Rated Units)
- 1 Year Limited Warranty (Prime Rated Units)

ENCLOSURE (If Selected)

- Rust-Proof Fasteners with Nylon Washers to Protect Finish
- High Performance Sound-Absorbing Material (Sound Attenuated Enclosures)
- Gasketed Doors
- Stamped Air-Intake Louvers
- Upward Facing Discharge Hoods (Radiator and Exhaust)
- Stainless Steel Lift Off Door Hinges
- Stainless Steel Lockable Handles
- RhinoCoat™ - Textured Polyester Powder Coat Paint

TANKS (If Selected)

- UL 142
- Double Wall
- Vents
- Sloped Top
- Sloped Bottom
- Factory Pressure Tested - 2 psi
- Rupture Basin Alarm
- Fuel Level
- Check Valve In Supply and Return Lines
- RhinoCoat™ - Textured Polyester Powder Coat Paint
- Stainless Steel Hardware

CONTROL SYSTEM



Digital H Control Panel- Dual 4x20 Display

Program Functions

- Programmable Crank Limiter
- 7-Day Programmable Exerciser
- Special Applications Programmable Logic Controller
- RS-232/485 Communications
- All Phase Sensing Digital Voltage Regulator
- 2-Wire Start Capability
- Date/Time Fault History (Event Log)
- Isochronous Governor Control

- Waterproof/Sealed Connectors
- Audible Alarms and Shutdowns
- Not in Auto (Flashing Light)
- Auto/Off/Manual Switch
- E-Stop (Red Mushroom-Type)
- NFPA110 Level I and II (Programmable)
- Customizable Alarms, Warnings, and Events
- Modbus® Protocol
- Predictive Maintenance Algorithm
- Sealed Boards
- Password Parameter Adjustment Protection
- Single Point Ground
- 16 Channel Remote Trending
- 0.2 msec High Speed Remote Trending
- Alarm Information Automatically Annunciated on the Display

Full System Status Display

- Power Output (kW)
- Power Factor
- kW Hours, Total, and Last Run
- Real/Reactive/Apparent Power
- All Phase AC Voltage
- All Phase Currents

- Oil Pressure
- Coolant Temperature
- Coolant Level
- Engine Speed
- Battery Voltage
- Frequency

Alarms and Warnings

- Oil Pressure
- Coolant Temperature
- Coolant Level
- Engine Overspeed
- Battery Voltage
- Alarms and Warnings Time and Date Stamped
- Snap Shots of Key Operation Parameters During Alarms and Warnings
- Alarms and Warnings Spelled Out (No Alarm Codes)

TAB 3-Generator Specs

SD050 | 4.5L | 50 kW
INDUSTRIAL DIESEL GENERATOR SET
EPA Certified Stationary Emergency



CONFIGURABLE OPTIONS

ENGINE SYSTEM

- Oil Make-Up System
- Oil Heater
- Industrial Silencer
- Critical Silencer

FUEL SYSTEM

- Flexible Fuel Lines
- Primary Fuel Filter

COOLING SYSTEM

- 120 VAC Coolant Heater
- 208 VAC Coolant Heater
- 240 VAC Coolant Heater

ELECTRICAL SYSTEM

- Battery Box
- Battery Heater
- 10A UL Listed Float/Equalize Battery Charger

ALTERNATOR SYSTEM

- Main Line Circuit Breaker
- 2nd Circuit Breaker
- 3rd Circuit Breaker
- Alternator Upsizing
- Anti-Condensation Heater
- Tropical Coating
- Permanent Magnet Excitation

GENERATOR SET

- Weather Protected Enclosure
- Level 1 Sound Attenuated Enclosure
- Level 2 Sound Attenuated Enclosure
- IBC Seismic Certified/Seismic Rated Vibration Isolators
- Steel Enclosure
- Aluminum Enclosure
- Enclosure Light Kits

CONTROL SYSTEM

- NFPA 110 Level 1 Compliant 21-Light Remote Annunciator
- Remote Relay Assembly (8 or 16)
- Spare Inputs (x4) Outputs (x4)
- Oil Temperature Indication and Alarm
- Remote E-Stop (Break Glass-Type, Surface Mount)
- Remote E-Stop (Red Mushroom-Type, Surface Mount)
- Remote E-Stop (Red Mushroom-Type, Flush Mount)
- Remote Communication - Modem
- 10A Engine Run Relay
- Ground Fault Annunciator
- 100 dB Alarm Horn

WARRANTY (Standby Gensets Only)

- 2 Year Extended Limited Warranty
- 5 Year Limited Warranty
- 5 Year Extended Limited Warranty
- 7 Year Extended Limited Warranty
- 10 Year Extended Limited Warranty

ENGINEERED OPTIONS

ENGINE SYSTEM

- Coolant Heater Ball Valves
- Fluid Containment Pan

CONTROL SYSTEM

- Battery Disconnect Switch

GENERATOR SET

- Special Testing
- Battery Box

ENCLOSURE

- Door Open Alarm
- Enclosure Heater
- Motorized Dampers

TANKS

- Overfill Protection Valve
- ULC S-601
- UL 2085 Tank
- Special Fuel Tanks
- External Vent Extensions
- Tank Risers
- 5 Gallon Spill Box
- Lockable Fuel Fill
- Pipe Flanges
- 90% High Fuel Alarm

TAB 3-Generator Specs

SD050 | 4.5L | 50 kW
INDUSTRIAL DIESEL GENERATOR SET
 EPA Certified Stationary Emergency



APPLICATION AND ENGINEERING DATA

ENGINE SPECIFICATIONS

General

| | |
|------------------------------------|-------------------------|
| Make | Iveco/FPT |
| EPA Emissions Compliance | Stationary Emergency |
| EPA Emissions Reference | See Emission Data Sheet |
| Cylinder # | 4 |
| Type | In-Line |
| Displacement - in ³ (L) | 274 (4.5) |
| Bore - in (mm) | 4.1 (105) |
| Stroke - in (mm) | 5.2 (132) |
| Compression Ratio | 17.5:1 |
| Intake Air Method | Turbocharged |
| Cylinder Head Type | 2-Valve |
| Piston Type | Aluminum |
| Crankshaft Type | Forged Steel |

Engine Governing

| | |
|-------------------------------------|------------------------|
| Governor | Electronic Isochronous |
| Frequency Regulation (Steady State) | ±0.25% |

Lubrication System

| | |
|-----------------------------|---------------------|
| Oil Pump Type | Gear |
| Oil Filter Type | Full-Flow Cartridge |
| Crankcase Capacity - qt (L) | 14.4 (13.6) |

Cooling System

| | |
|------------------------|-------------------------|
| Cooling System Type | Closed |
| Water Pump Type | Belt Driven Centrifugal |
| Fan Type | Pusher |
| Fan Speed - RPM | 2,538 |
| Fan Diameter - in (mm) | 26 (660) |

Fuel System

| | |
|----------------------------|------------------------------|
| Fuel Type | Ultra Low Sulfur Diesel Fuel |
| Fuel Specifications | ASTM |
| Fuel Filtering (Microns) | 5 |
| Fuel Pump Type | Engine Driven Gear |
| Injector Type | Mechanical |
| Fuel Supply Line - in (mm) | 0.25 (6.35) NPT |
| Fuel Return Line - in (mm) | 0.25 (6.35) NPT |

Engine Electrical System

| | |
|----------------------------|------------------------------|
| System Voltage | 12 VDC |
| Battery Charger Alternator | Standard |
| Battery Size | See Battery Index 0161970SBY |
| Battery Voltage | 12 VDC |
| Ground Polarity | Negative |

ALTERNATOR SPECIFICATIONS

| | |
|-------------------------------------|-------------|
| Standard Model | K0050124Y21 |
| Poles | 4 |
| Field Type | Revolving |
| Insulation Class - Rotor | H |
| Insulation Class - Stator | H |
| Total Harmonic Distortion | <5% |
| Telephone Interference Factor (TIF) | <50 |

| | |
|------------------------------------|---------------------------|
| Standard Excitation | Synchronous Brushless |
| Bearings | One, Pre-Lubed and Sealed |
| Coupling | Direct via Flexible Disc |
| Prototype Short Circuit Test | Yes |
| Voltage Regulator Type | Digital |
| Number of Sensed Phases | 3 |
| Regulation Accuracy (Steady State) | ±0.25% |

TAB 3-Generator Specs

SD050 | 4.5L | 50 kW
INDUSTRIAL DIESEL GENERATOR SET
 EPA Certified Stationary Emergency



OPERATING DATA

POWER RATINGS

| | | Standby |
|---------------------------------|-------|-----------|
| Single-Phase 120/240 VAC @1.0pf | 50 kW | Amps: 208 |
| Three-Phase 120/208 VAC @0.8pf | 50 kW | Amps: 174 |
| Three-Phase 120/240 VAC @0.8pf | 50 kW | Amps: 151 |
| Three-Phase 277/480 VAC @0.8pf | 50 kW | Amps: 75 |
| Three-Phase 346/600 VAC @0.8pf | 50 kW | Amps: 60 |

MOTOR STARTING CAPABILITIES (skVA)

| skVA vs. Voltage Dip | | | |
|----------------------|-----|-------------|-----|
| 277/480 VAC | 30% | 208/240 VAC | 30% |
| K0050124Y21 | 98 | K0050124Y21 | 75 |

FUEL CONSUMPTION RATES*

| Fuel Pump Lift- ft (m) | Diesel - gph (Lph) | |
|--|--------------------|--------------|
| | Percent Load | Standby |
| 3 (1) | 25% | 1.15 (4.35) |
| | 50% | 2.25 (8.52) |
| Total Fuel Pump Flow (Combustion + Return) - gph (Lph) | 75% | 3.21 (12.15) |
| 13.6 (51.5) | 100% | 4.15 (15.75) |

* Fuel supply installation must accommodate fuel consumption rates at 100% load.

COOLING

| | | Standby |
|---|----------------------------|-----------------------------|
| Coolant Flow | gpm (Lpm) | 32.7 (123.8) |
| Coolant System Capacity | gal (L) | 4.5 (17.44) |
| Heat Rejection to Coolant | BTU/hr (kW) | 121,000 (35.5) |
| Inlet Air | scfm (m ³ /min) | 6,360 (180) |
| Maximum Operating Radiator Air Temperature | °F (°C) | 122 (50) |
| Maximum Ambient Temperature (Before Derate) | | See Bulletin No. 0199270SSD |
| Maximum Radiator Backpressure | in H ₂ O (kPa) | 0.5 (0.12) |

COMBUSTION AIR REQUIREMENTS

| | Standby | Prime |
|--|------------|------------|
| Flow at Rated Power scfm (m ³ /min) | 205 (5.80) | 189 (5.35) |

ENGINE

| | | Standby |
|--------------------------|----------------|-------------|
| Rated Engine Speed | RPM | 1,800 |
| Horsepower at Rated kW** | hp | 80 |
| Piston Speed | ft/min (m/min) | 1,559 (475) |
| BMEP | psi (kPa) | 128.5 (886) |

EXHAUST

| | | Standby |
|-----------------------------|----------------------------|------------|
| Exhaust Flow (Rated Output) | scfm (m ³ /min) | 497 (14.1) |
| Max. Allowable Backpressure | inHg (kPa) | 1.5 (5.1) |
| Exhaust Temp (Rated Output) | °F (°C) | 850 (454) |

** Refer to "Emissions Data Sheet" for maximum bHP for EPA and SCAQMD permitting purposes.

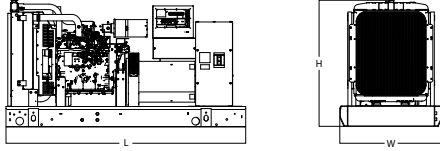
Deration – Operational characteristics consider maximum ambient conditions. Derate factors may apply under atypical site conditions.
 Please contact a Generac Power Systems Industrial Dealer for additional details. All performance ratings in accordance with ISO3046, BS5514, ISO8528, and DIN6271 standards.
 Standby - See Bulletin 10000018933
 Prime - See Bulletin 10000018926

TAB 3-Generator Specs

SD050 | 4.5L | 50 kW
INDUSTRIAL DIESEL GENERATOR SET
 EPA Certified Stationary Emergency

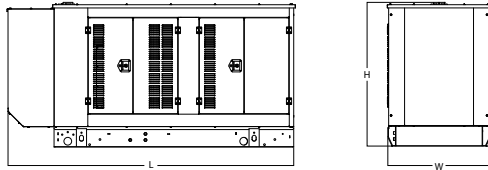


DIMENSIONS AND WEIGHTS*



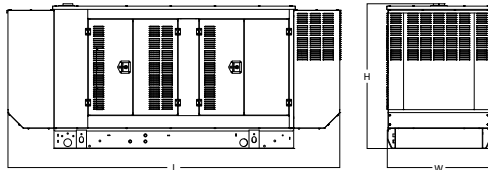
OPEN SET (Includes Exhaust Flex)

| Run Time - Hours | Usable Capacity - Gal (L) | L x W x H - in (mm) | Weight - lbs (kg) |
|------------------|---------------------------|---|-------------------|
| No Tank | - | 76.0 (1,930) x 37.0 (940) x 53.0 (1,346) | 1,996 (905) |
| 13 | 54 (204) | 76.0 (1,930) x 37.0 (940) x 66.0 (1,676) | 2,476 (1,123) |
| 32 | 132 (500) | 76.0 (1,930) x 37.0 (940) x 78.0 (1,981) | 2,706 (1,227) |
| 51 | 211 (799) | 76.0 (1,930) x 37.0 (940) x 90.0 (2,286) | 2,915 (1,322) |
| 72 | 300 (1,136) | 93.0 (2,362) x 37.0 (940) x 94.0 (2,388) | 2,978 (1,351) |
| 122 | 510 (1,931) | 117.0 (2,972) x 47.0 (1,194) x 96.0 (2,438) | 3,361 (1,525) |



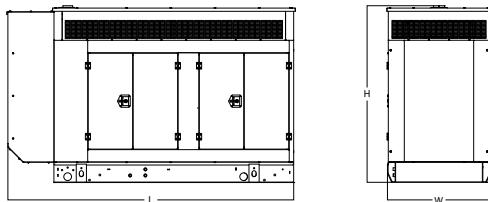
WEATHER PROTECTED ENCLOSURE

| Run Time - Hours | Usable Capacity - Gal (L) | L x W x H - in (mm) | Weight - lbs (kg) |
|------------------|---------------------------|---|-------------------|
| No Tank | - | 95.0 (2,413) x 38.0 (965) x 50.0 (1,270) | 2,298 (1,042) |
| 13 | 54 (204) | 95.0 (2,413) x 38.0 (965) x 63.0 (1,600) | 2,778 (1,260) |
| 32 | 132 (500) | 95.0 (2,413) x 38.0 (965) x 75.0 (1,905) | 3,008 (1,364) |
| 51 | 211 (799) | 95.0 (2,413) x 38.0 (965) x 87.0 (2,210) | 3,217 (1,459) |
| 72 | 300 (1,136) | 95.0 (2,413) x 38.0 (965) x 91.0 (2,311) | 3,280 (1,488) |
| 122 | 510 (1,931) | 117.0 (2,972) x 47.0 (1,194) x 93.0 (2,362) | 3,663 (1,662) |



LEVEL 1 SOUND ENCLOSURE

| Run Time - Hours | Usable Capacity - Gal (L) | L x W x H - in (mm) | Weight - lbs (kg) |
|------------------|---------------------------|---|-------------------|
| No Tank | - | 112.0 (2,845) x 38.0 (965) x 50.0 (1,270) | 2,451 (1,112) |
| 13 | 54 (204) | 112.0 (2,845) x 38.0 (965) x 63.0 (1,600) | 2,931 (1,329) |
| 32 | 132 (500) | 112.0 (2,845) x 38.0 (965) x 75.0 (1,905) | 3,161 (1,434) |
| 51 | 211 (799) | 112.0 (2,845) x 38.0 (965) x 87.0 (2,210) | 3,370 (1,529) |
| 72 | 300 (1,136) | 112.0 (2,845) x 38.0 (965) x 91.0 (2,311) | 3,433 (1,557) |
| 122 | 510 (1,931) | 135.0 (3,429) x 47.0 (1,194) x 93.0 (2,362) | 3,816 (1,731) |



LEVEL 2 SOUND ENCLOSURE

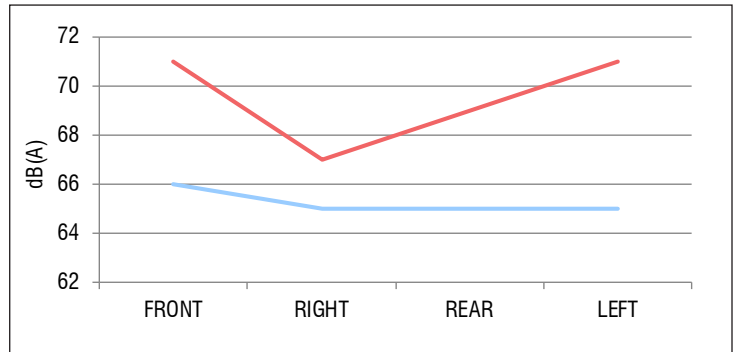
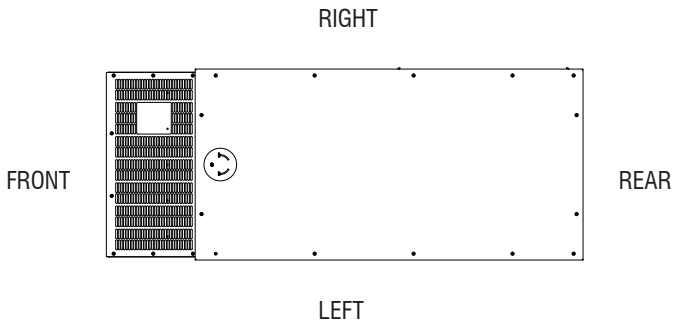
| Run Time - Hours | Usable Capacity - Gal (L) | L x W x H - in (mm) | Weight - lbs (kg) |
|------------------|---------------------------|--|-------------------|
| No Tank | - | 95.0 (2,413) x 38.0 (965) x 62.0 (1,575) | 2,456 (1,114) |
| 13 | 54 (204) | 95.0 (2,413) x 38.0 (965) x 75.0 (1,905) | 2,936 (1,332) |
| 32 | 132 (500) | 95.0 (2,413) x 38.0 (965) x 87.0 (2,210) | 3,166 (1,436) |
| 51 | 211 (799) | 95.0 (2,413) x 38.0 (965) x 99.0 (2,515) | 3,375 (1,531) |
| 72 | 300 (1,136) | 95.0 (2,413) x 38.0 (965) x 103.0 (2,616) | 3,438 (1,559) |
| 122 | 510 (1,931) | 117.0 (2,972) x 47.0 (1,194) x 105.0 (2,667) | 3,821 (1,733) |

* All measurements are approximate and for estimation purposes only. Specification characteristics may change without notice. Please contact a Generac Power Systems Industrial Dealer for detailed installation drawings.

LEVEL 2 SOUND ATTENUATED ENCLOSURE D4.5L SD050

| | | 60Hz NO-LOAD, dB(A) | | | | | | | | | DISTANCE: 7 METERS |
|---------------------|-----------------------------------|---------------------|-----------|-----------|-----------|-----------|-----------|-----------|-----------|-----------|--------------------|
| MICROPHONE LOCATION | OCTAVE BAND CENTER FREQUENCY (Hz) | | | | | | | | | | |
| | 31.5 | 63 | 125 | 250 | 500 | 1,000 | 2,000 | 4,000 | 8,000 | dB(A) | |
| FRONT | 31 | 56 | 59 | 58 | 62 | 58 | 54 | 50 | 42 | 66 | |
| RIGHT | 31 | 58 | 55 | 58 | 59 | 55 | 50 | 47 | 41 | 65 | |
| REAR | 29 | 60 | 54 | 56 | 60 | 54 | 49 | 45 | 38 | 65 | |
| LEFT | 30 | 55 | 57 | 58 | 60 | 57 | 53 | 49 | 43 | 65 | |
| AVERAGE | 30 | 57 | 57 | 57 | 60 | 56 | 51 | 48 | 41 | 65 | |

| | | 60Hz FULL-LOAD, dB(A) | | | | | | | | | DISTANCE: 7 METERS |
|---------------------|-----------------------------------|-----------------------|-----------|-----------|-----------|-----------|-----------|-----------|-----------|-----------|--------------------|
| MICROPHONE LOCATION | OCTAVE BAND CENTER FREQUENCY (Hz) | | | | | | | | | | |
| | 31.5 | 63 | 125 | 250 | 500 | 1,000 | 2,000 | 4,000 | 8,000 | dB(A) | |
| FRONT | 31 | 61 | 67 | 59 | 64 | 60 | 57 | 56 | 50 | 71 | |
| RIGHT | 30 | 57 | 62 | 60 | 61 | 58 | 55 | 52 | 46 | 67 | |
| REAR | 27 | 65 | 60 | 61 | 61 | 56 | 52 | 51 | 43 | 69 | |
| LEFT | 29 | 65 | 67 | 60 | 63 | 58 | 58 | 55 | 49 | 71 | |
| AVERAGE | 30 | 62 | 64 | 60 | 62 | 58 | 55 | 53 | 47 | 69 | |

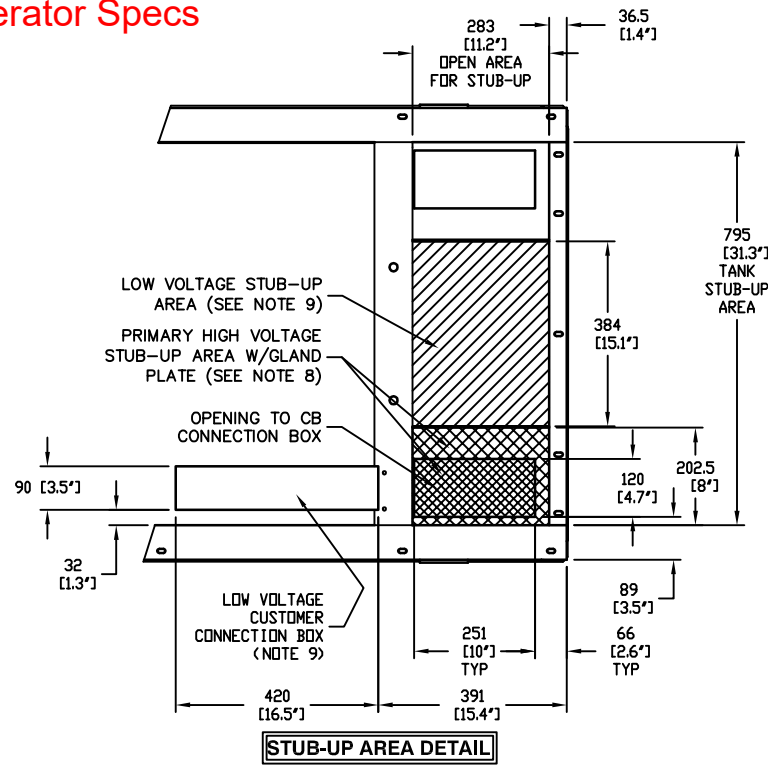
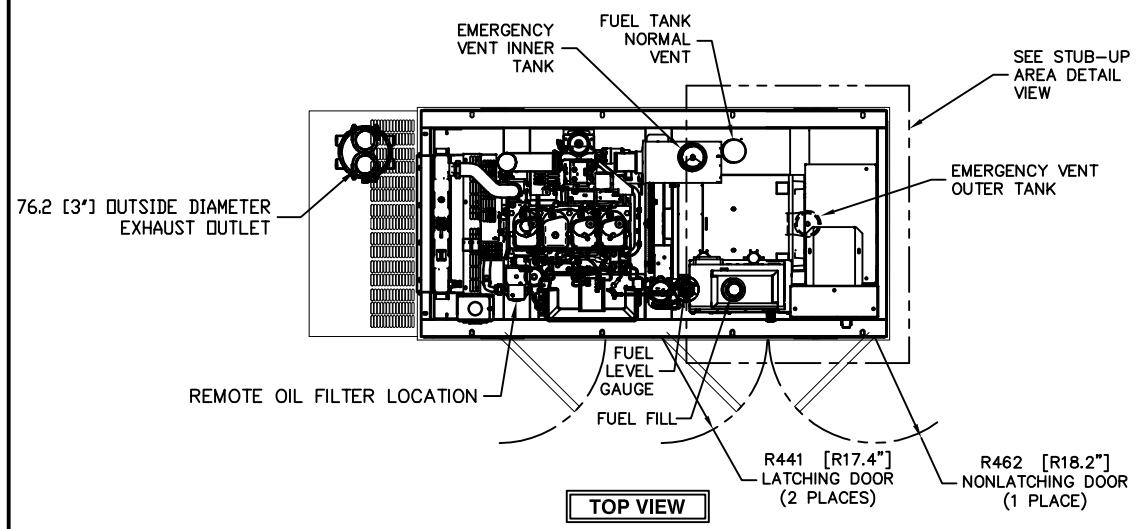


- All positions at 23 feet (7 meters) from side faces of generator set.
- Test conducted on a 100 foot diameter asphalt surface.
- Sound pressure levels are subject to instrumentation, installation and testing conditions.
- Sound levels are ± 2 dB(A).

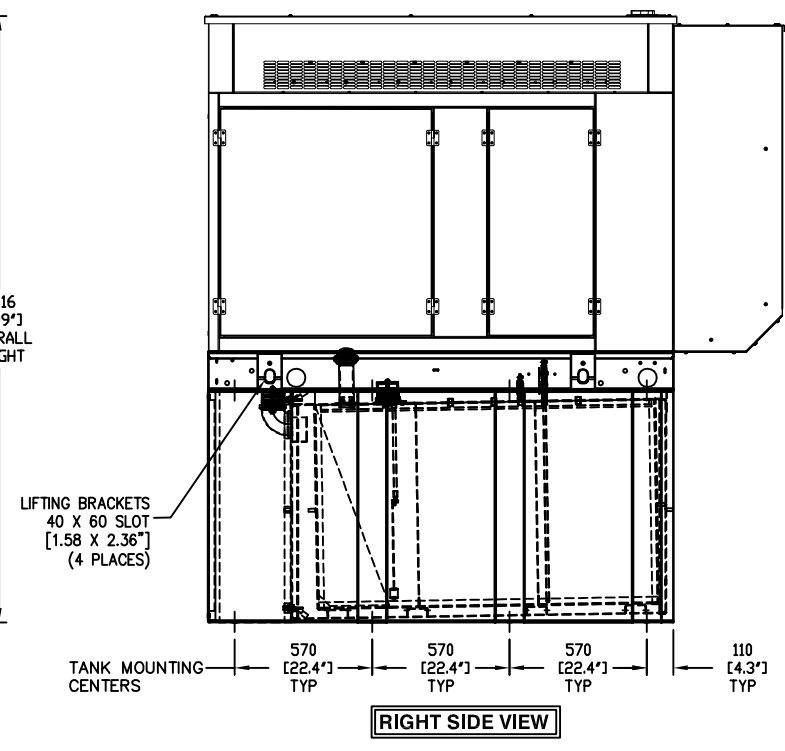
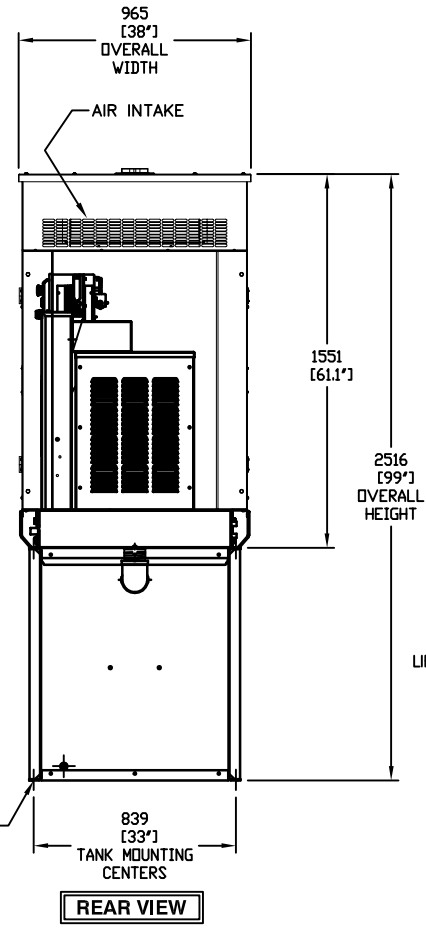
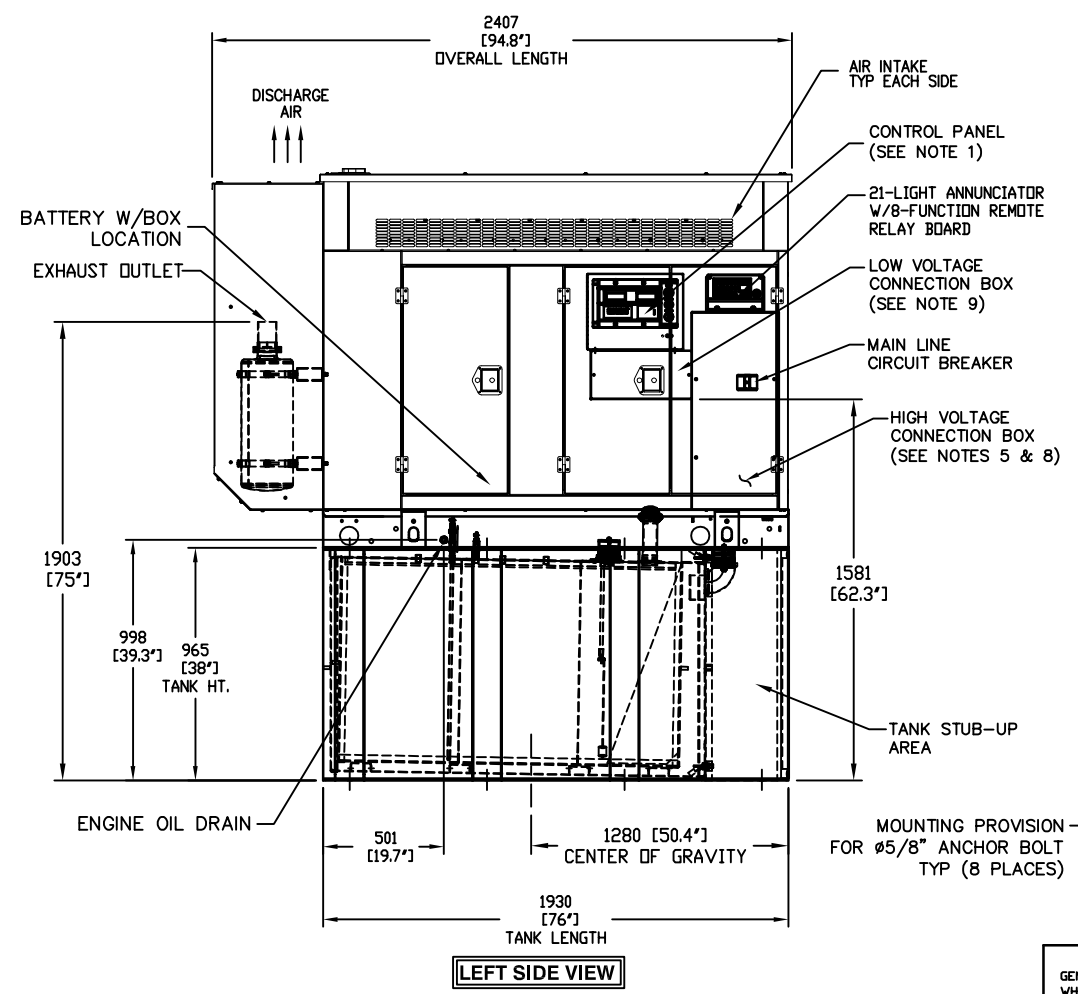
0J8316D

TAB 3-Generator Specs

| RECOMMENDED ELECTRICAL STUB-UPS (SEE DETAILED VIEW & TOP VIEW) | |
|--|---------------|
| DESCRIPTION | INSIDE BASE |
| HIGH VOLTAGE STUB-UP AREA 1) AC LOAD LEAD CONDUIT AREA. 2) 120/240 VAC FROM UTILITY FOR OPTIONAL LOADS SUCH AS GFCI OUTLET, BLOCK HEATER, BATTERY CHARGER, AND OTHER 120/240 VAC OPTIONS. (GLAND PLATE INCLUDED) | [Hatched Box] |
| LOW VOLTAGE STUB-UP AREA 1) TRANSFER SWITCH/COMMUNICATION CONDUITS, COMMUNICATIONS AND 2-WIRE START <u>MUST NOT</u> BE RUN IN CONDUIT WITH AC WIRING. (SEE NOTE 9) | [Hatched Box] |



- NOTES:**
- CONTROL PANEL W/BATTERY CHARGER. THREE PRONG CORD COMING OUT OF CONTROL PANEL IS FOR THE BATTERY CHARGER.
 - 1500W 120VAC ENGINE BLOCK HEATER W/CORD.
 - 12 VOLT NEGATIVE GROUND SYSTEM.
 - OPTIONAL REMOTE EMERGENCY STOP SHIPPED LOOSE WITH GENERATOR.
 - GENERATOR MUST BE GROUNDED.
 - CENTER OF GRAVITY & WEIGHT MAY SHIFT SLIGHTLY DUE TO UNIT OPTIONS.
 - STUB-UPS: BASE TANK REQUIRES ALL STUB-UPS TO BE IN THE REAR TANK STUB-UP AREA.
 - HIGH VOLTAGE STUB-UP AREA INCLUDES THE AC LOAD LEAD CONNECTION TO THE MAIN LINE CIRCUIT BREAKER (MLCB), THE NEUTRAL CONNECTION, AND AUXILIARY 120/240V CONNECTION.
 - CONNECTION POINTS FOR CONTROL WIRES. BOTTOM OF LOW VOLTAGE CUSTOMER CONNECTION BOX HAS KNOCKOUTS FOR 1/2" AND 3/4" CONDUIT FITTINGS.
 - MUST ALLOW FREE FLOW OF DISCHARGE AIR AND EXHAUST. SEE SPEC SHEET FOR MINIMUM AIR FLOW AND MAXIMUM RESTRICTION REQUIREMENTS.
 - MUST ALLOW FREE FLOW OF INTAKE AIR. SEE SPEC SHEET FOR MINIMUM AIR FLOW AND MAXIMUM RESTRICTION REQUIREMENTS.
 - ENCLOSED SETS - GENERATOR SET MUST BE INSTALLED SUCH THAT DISCHARGE AIR IS NOT RECIRCULATED.
 - IT IS THE RESPONSIBILITY OF THE INSTALLATION TECHNICIAN TO ENSURE THAT THE GENERATOR INSTALLATION COMPLIES WITH ALL APPLICABLE CODES, STANDARDS, AND REGULATIONS.
 - 210 GALLON USEABLE CAPACITY BASE TANK STANDARD WITH GENERATOR.
 - UNIT IS SHIPPED WITH FUEL SUPPLY AND RETURN LINES DISCONNECTED AND PLUGGED BETWEEN ENGINE AND FUEL TANK. THIS HAS BEEN DONE TO FACILITATE PRESSURE TESTING OF THE TANK IN THE FIELD. FOR INFORMATION REGARDING CONNECTING THE FUEL SUPPLY AND RETURN LINES PRIOR TO START UP, SEE THE FUEL TANK FIELD TESTING PROCEDURE (0E5082) SUPPLIED IN THE TANK LOOSE VENTS KIT, WHICH IS SHIPPED WITH THIS GENERATOR.
 - SEE DRAWING 0C3850 FOR DUCT REMOVAL. REMOVAL OF FRONT DUCT WILL PROVIDE ACCESS TO MUFFLER FOR SERVICING.



WEIGHT DATA (INCLUDES WOODEN SHIPPING SKID)
ENCLOSED GENERATOR WITH EMPTY FUEL TANK - 1700kg (3750 lbs)

UNITS: mm [INCHES]

GENERAC POWER SYSTEMS OWNS THE COPYRIGHT OF THIS DRAWING WHICH IS SUPPLIED IN CONFIDENCE AND MUST NOT BE USED FOR ANY PURPOSE OTHER THAN FOR WHICH IT IS SUPPLIED WITHOUT THE EXPRESS WRITTEN CONSENT OF GENERAC POWER SYSTEMS.
© GENERAC POWER SYSTEMS 2001

INSTALLATION D4.5L G17 50KW
ENCLOSED LEVEL 2A - SSM Y02
WITH 3 FT 210 GALLON BASE TANK
ISSUE DATE: 2/18/13

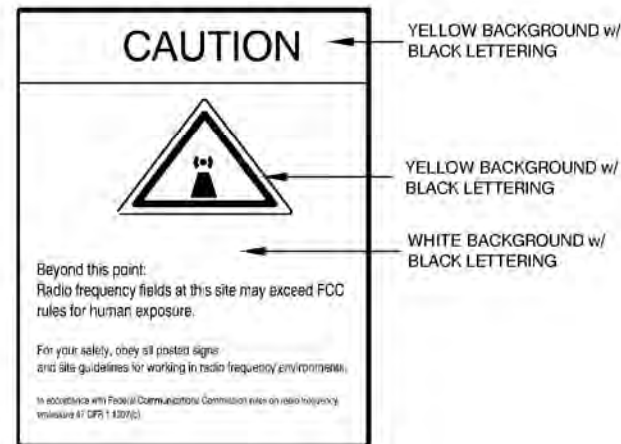
| | |
|--|-------------|
| GENERAC POWER SYSTEMS Waukesha P.O. BOX 8 WAUKESHA, WIS. 53187 | |
| FILE NAME | 0J8316D.DWG |
| SCALE | NTS |
| FIRST USE | 0067160 |
| DWG NO. | 0J8316D |
| SIZE | B |
| REV | B |

INSTALLATION DRAWING

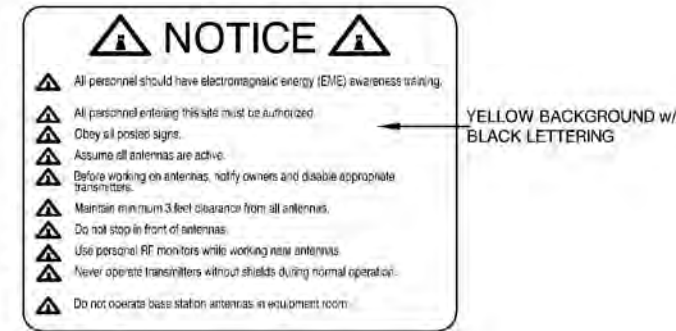
TAB 3-Sign Details



① VERTICAL BRIDGE - SITE ID SIGN



② RF EXPOSURE CAUTION SIGN



③ NOTICE-RFE SIGN
 12" HIGH X 18" WIDE
 (OPERATIONS PROVIDED)

SIGNAGE NOTES:

- SIGNS SHALL BE FABRICATED FROM CORROSION RESISTANT PRESSED METAL, AND PAINTED WITH LONG LASTING UV RESISTANT COATINGS.
- SIGNS (EXCEPT WHERE NOTED OTHERWISE) SHALL BE MOUNTED TO THE TOWER, GATE, AND FENCE USING A MINIMUM OF 9 GAUGE ALUMINUM WIRE, HOG RINGS (AS UTILIZED IN FENCE INSTALLATIONS) OR BRACKETS WHERE NECESSARY. BRACKETS SHALL BE OF SIMILAR METAL AS THE STRUCTURE TO AVOID GALVANIC CORROSION.
- ADDITIONAL SITE # AND EMERGENCY CONTACT SIGNS SHALL BE MOUNTED AT EACH ACCESS ROAD GATE LEADING TO THE COMPOUND AS WELL AS THE COMPOUND GATE ITSELF.
- CARRIER SITE # AND EMERGENCY CONTACT SIGNS SHALL BE MOUNTED ON THE EQUIPMENT CABINET W/ PERMANENT SET ADHESIVE. TWO SIDED TAPE SHALL BE UTILIZED AT EACH CORNER ON THE BACKSIDE TO AID PLACEMENT UNTIL ADHESIVE SETS.

verticalbridge
 700 PARK OF COMMERCE DRIVE
 BOCA RATON FL 33487
 TEL: (561) 948-6367

PROJECT INFORMATION:
 SITE NAME:
 CROSSPOINT
 SITE No.: US-NC-5292
 PROJECT #: 2112981
 NC HIGHWAY 42
 MONCURE, NC 27559
 CHATHAM COUNTY

PLANS PREPARED BY:
Kimley»Horn
 11720 AMBER PARK DRIVE, SUITE 800
 ALPHARETTA, GA 30009
 PHONE: 770-819-4280
 WWW.KIMLEY-HORN.COM
 NC License F-0102

| | | | |
|--|--|--|--|
| | | | |
|--|--|--|--|

REV: _____ DATE: _____ ISSUED FOR: _____ BY: _____

| | | | |
|---|----------|--------------|-----|
| 8 | | | |
| 7 | | | |
| 6 | | | |
| 5 | | | |
| 4 | | | |
| 3 | | | |
| 2 | | | |
| 1 | | | |
| 0 | 09/19/23 | CONSTRUCTION | TRN |

LICENSER:

KHA PROJECT NUMBER:
 013291005

DRAWN BY: XQD CHECKED BY: DMF

SHEET TITLE:
**SITE SIGNAGE
 DETAILS**

SHEET NUMBER:
C11

K:\ATL_Wireless\Vertical_Bridge\US-NC-5292_Crosspoint\CAD\GB\ECar-GB.dwg ----- 09/22/23 10:28 AM by: christopher.strange



verticalbridge

SITE NAME: Hodges - Type 7

SITE NUMBER: SC-8034

FCC TOWER ID:

Managed by: VERTICAL BRIDGE

Telephone: 877-589-6411

www.verticalbridge.com

sales@verticalbridge.com

operations@verticalbridge.com

NO TRESPASSING