

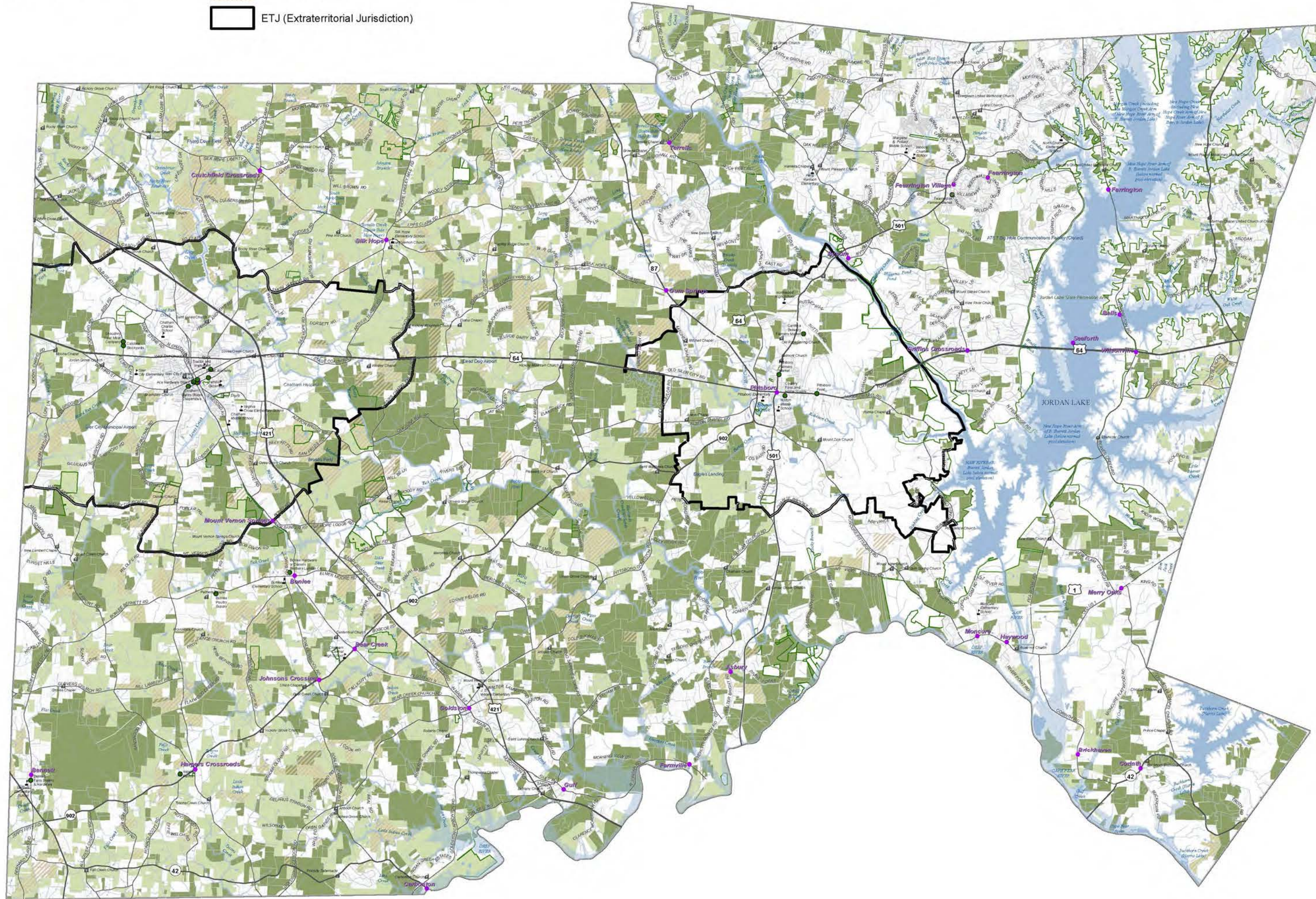


# PLAN CHATHAM

## AGRICULTURAL MAPPING & ANALYSIS

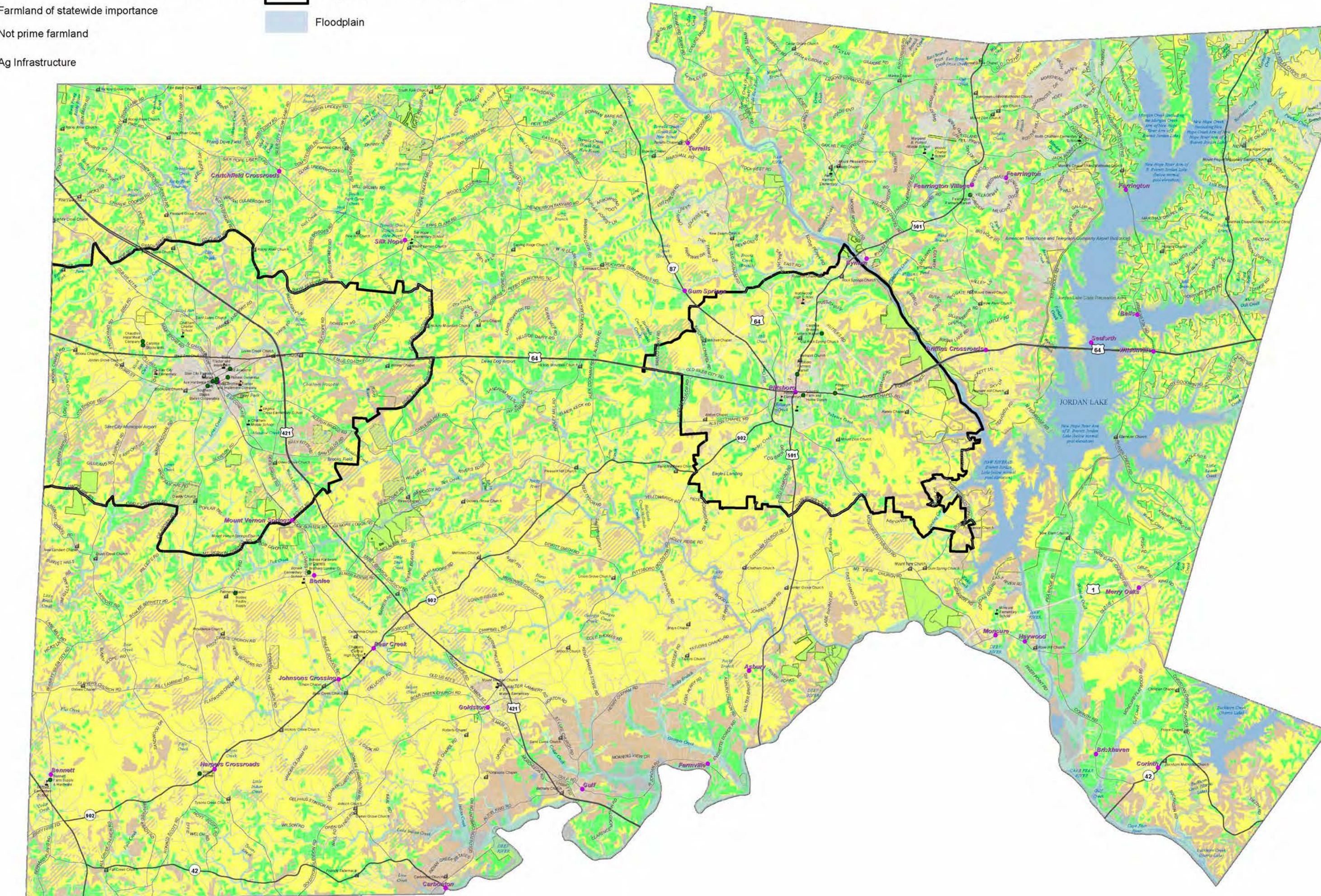
### PRESENT USE VALUE

- PUV Type**
- Majority Crop or Pasture or at least 10 Acres
  - Majority Forestry or Horticulture
- Other**
- Parks, Managed Areas & Conservation Easements
  - Voluntary Ag District
  - ETJ (Extraterritorial Jurisdiction)



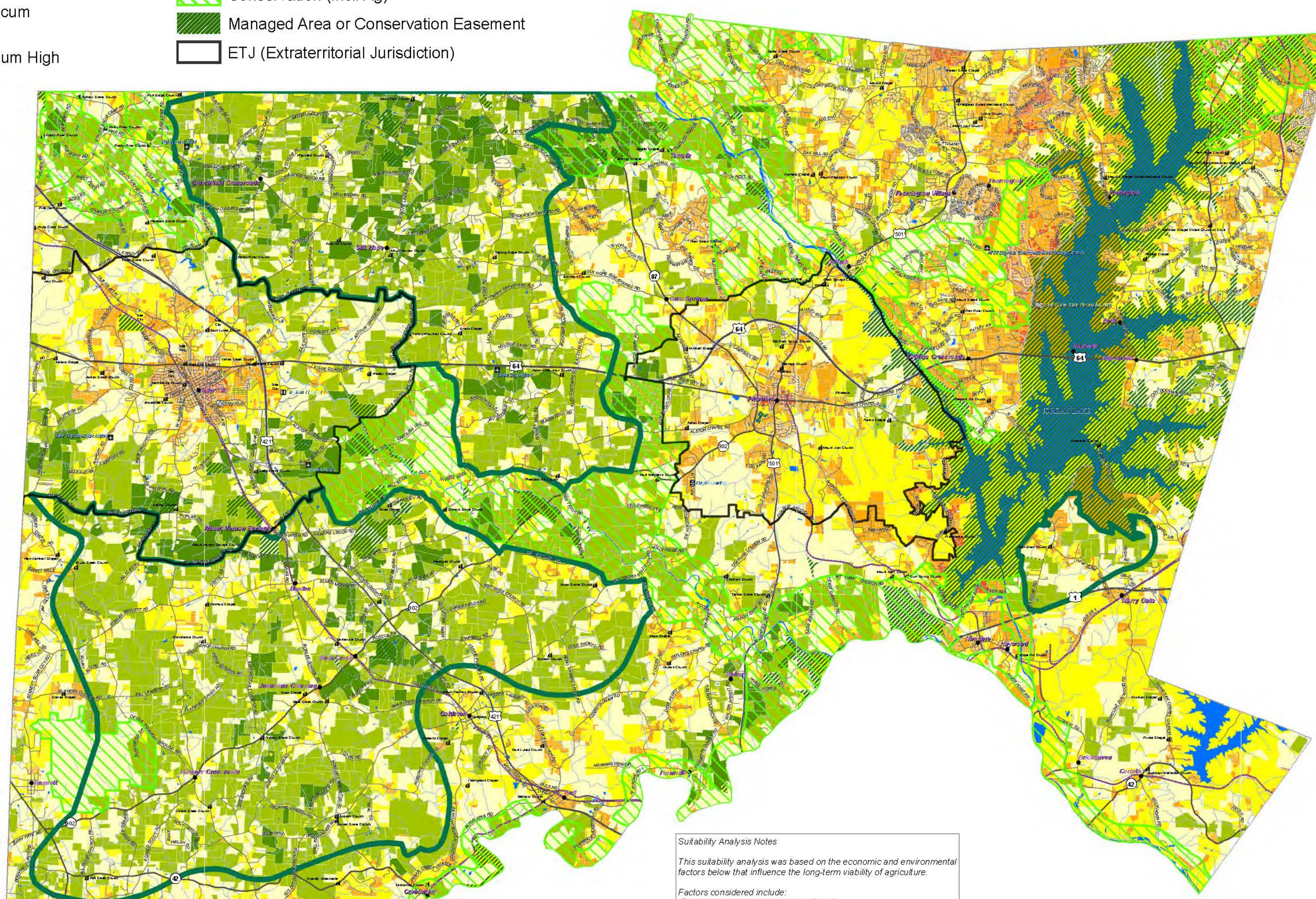
### PRIME FARMLAND

- Farmland Class**
- All areas are prime farmland
  - Prime farmland if drained or protected from flooding
  - Farmland of statewide importance
  - Not prime farmland
  - Ag Infrastructure
- Context Features**
- Parks, Managed Areas & Conservation Easements
  - ETJ (Extraterritorial Jurisdiction)
  - Floodplain



### AG SUITABILITY ANALYSIS - EVEN WEIGHTS

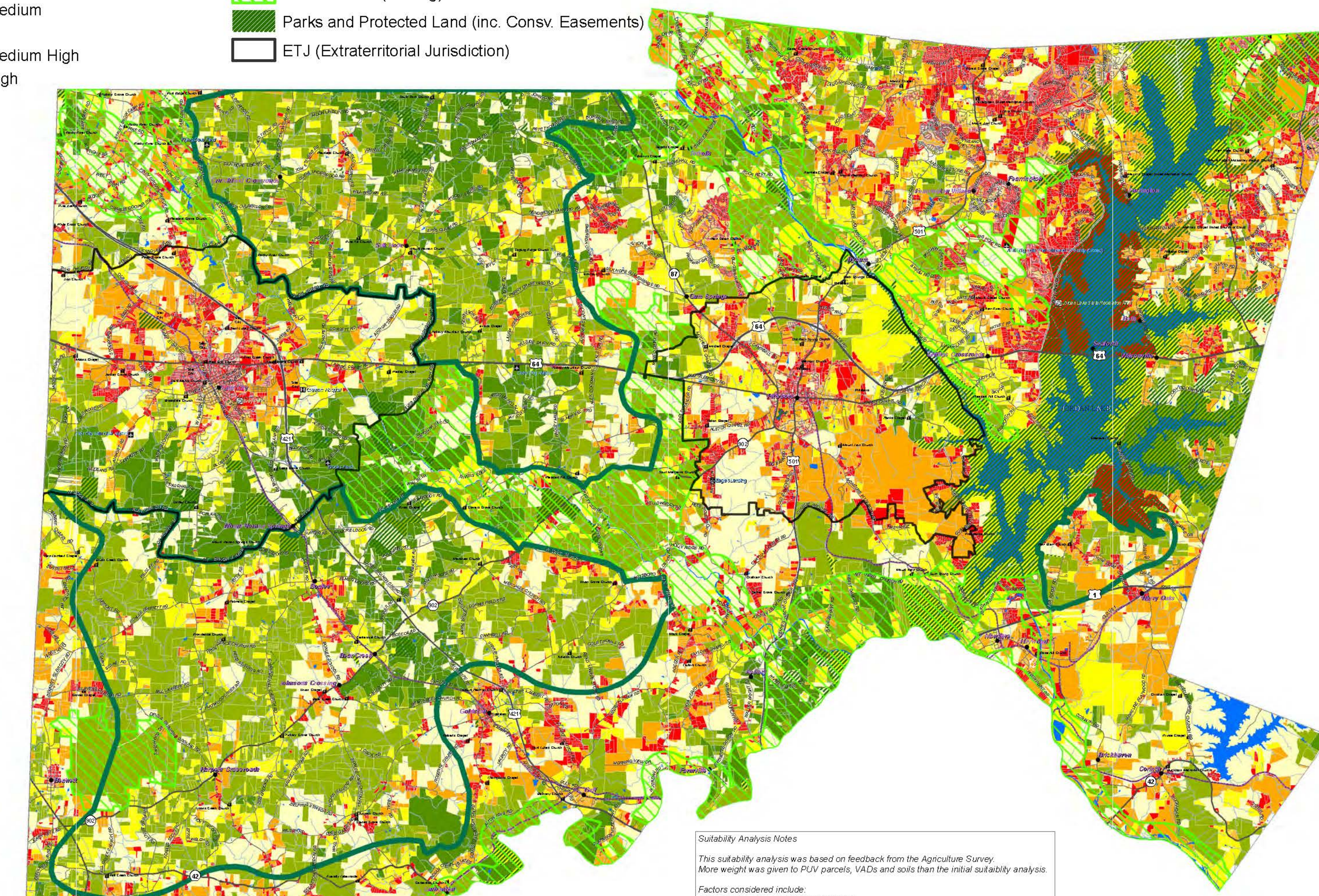
- Agricultural Suitability Analysis**
- Low
  - Medium
  - Medium High
  - High
- Draft Future Land Use Plan**
- Agriculture
  - Conservation (incl. Ag)
  - Managed Area or Conservation Easement
  - ETJ (Extraterritorial Jurisdiction)



**Suitability Analysis Notes**  
 This suitability analysis was based on the economic and environmental factors below that influence the long-term viability of agriculture.  
 Factors considered include:  
 Present crop/land program enrollment  
 Proximity to conserved lands (i.e. agricultural easements)  
 Proximity to conserved lands (i.e. agricultural easements)  
 Soil quality (some farmed or data significant)  
 Proximity to concentrations of agricultural operations

### AG SUITABILITY ANALYSIS - WEIGHTS FROM AG SURVEY

- Agricultural Suitability Analysis ALT**
- Low
  - Medium
  - Medium High
  - High
- Draft Future Land Use Plan**
- Agriculture
  - Conservation (incl. Ag)
  - Parks and Protected Land (inc. Consv. Easements)
  - ETJ (Extraterritorial Jurisdiction)



**Suitability Analysis Notes**  
 This suitability analysis was based on feedback from the Agriculture Survey. More weight was given to PUV parcels, VADs and soils than the initial suitability analysis.  
 Factors considered include:  
 Present crop/land program enrollment  
 Present crop/land program enrollment  
 Proximity to conserved lands (i.e. agricultural easements)  
 Proximity to Voluntary Agricultural Districts  
 Soil of easement

THE 2009 FARMLAND PROTECTION PLAN RECOMMENDED MAPPING STRATEGIC AGRICULTURAL LANDS IN THE COUNTY AND ESTABLISHING LAND USE POLICIES TO PROTECT THEM. THE MAPS ABOVE SHOW SOME OF THE INPUTS THAT WERE USED TO IDENTIFY AGRICULTURAL LANDS ON THE FUTURE LAND USE MAP.