

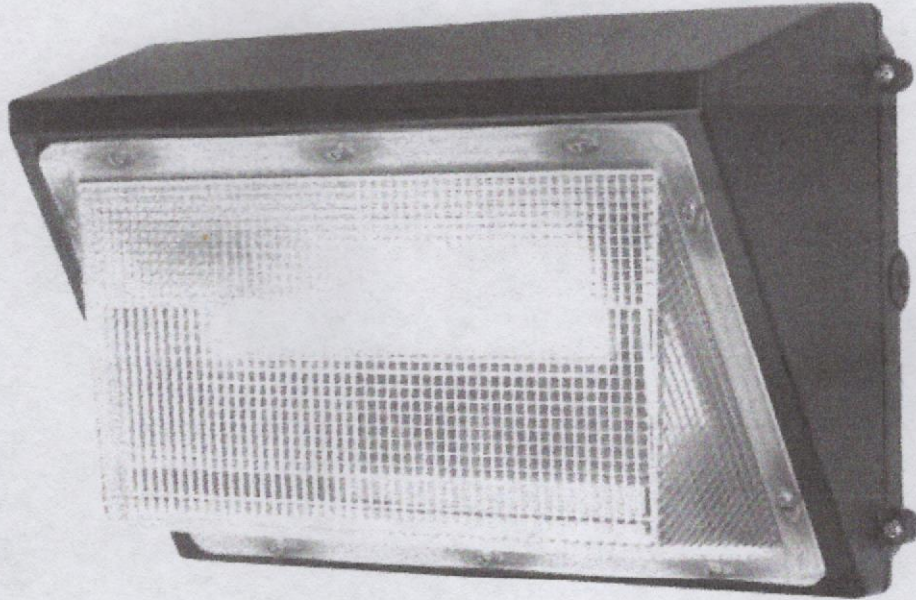
# **The Extra Garage IV Self Storage Center** **Lighting Plan**

- 1. Type of Interior Lights (p. 1)**
- 2. Type of Exterior Lights (p. 2)**
- 3. Interior Lighting Plan (p. 3)**
- 4. Exterior Lighting Plan (p.4)**

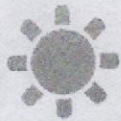


# Interior Lighting

A



**GKOLED™ Traditional Style LED Wall Pack | GKOWP08 Series |  
15,000 Lumens | 5000K | Medium Bronze**



aspectLED  
A WILSON TOOL COMPANY

# Exterior and Entrance Lighting

B

- Menu
- Search
- Account

888.503.1317 CHAT LIVE WITH AN LED EXPERT ABOUT US SUPPORT CUSTOM OEM SOLUTIONS MY ACCOUNT



aspectLED  
A WILSON TOOL COMPANY

Search our site



Cart

Flexible / Strip Lights Recessed In-Ceiling Lights Flood Lights Commercial Residential Exterior Underwater Lights Power Supplies & Controls

Home > 100W LED Full Cut-Off Wall Pack Light (Equal to 320W Metal Halide/High Pressure Sodium)

## 100W LED Full Cut-Off Wall Pack Light (Equal to 320W Metal Halide/High Pressure Sodium)

Built for you in 10-15 business days

SKU AL-WP-FC100-NW-100VAC

**\$190.38**

LED LIGHT COLOR Natural White (5000K)



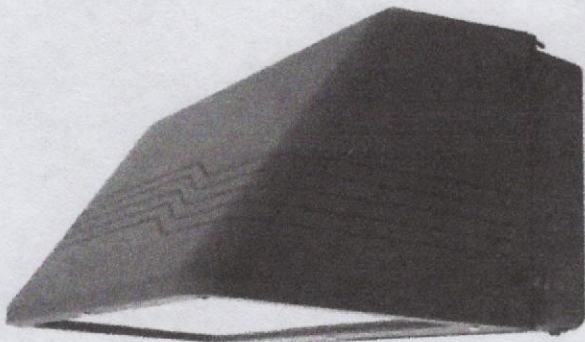
PHOTOCELL No

NO  YES

VOLTAGE 100-277VAC

100-277VAC

Qty 1



Add to Cart

Share:

Details

PRODUCT DETAILS

TECHNICAL DOCS & VIDEOS

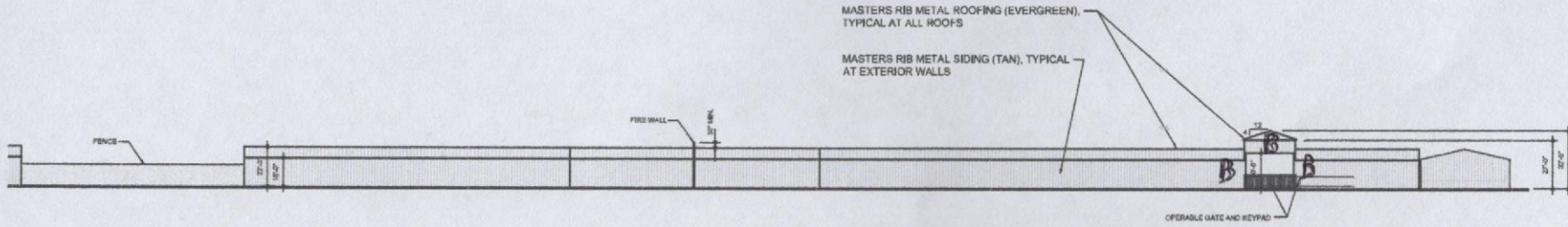
FAQ

ACCESSORIES

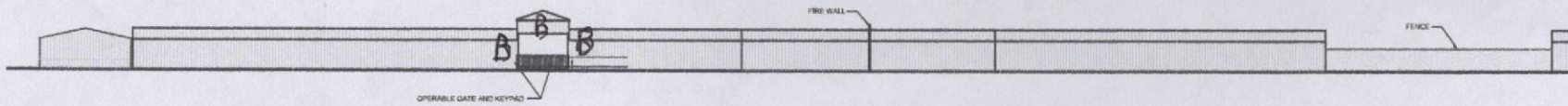


B lights only

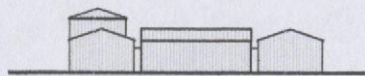
# Lighting Plan-Exterior



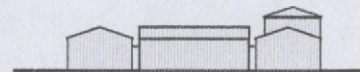
① Front Elevation (Building A)  
SCALE 1" = 30'



② Front Elevation (Building B)  
SCALE 1" = 30'



③ North Elevation  
SCALE 1" = 30'



④ South Elevation  
SCALE 1" = 30'



JERRY TURNER & ASSOCIATES, INC.

Landscape Architecture  
Land Planning  
Environmental Design

805 Jones Franklin Road  
Raleigh, North Carolina 27606  
(919) 891-7150 fax: (919) 851-7547

277 S.E. 5th Avenue  
Delray Beach, Florida 33483  
(561) 278-0453 fax: (561) 278-7593

PROJECT

THE  
EXTRA  
GARAGE IV  
SELF-STORAGE  
CENTER  
CHATHAM COUNTY, NC

OWNER/DEVELOPER:  
WALTER LEWIS

DATE	DESCRIPTION
RT	WH
RTALS	ALYS
BY	2/5/16
TITLE	

Architectural  
Elevations

FILE NO. 218 011

DATE 2/25/16

© JERRY TURNER & ASSOCIATES, INC. THIS DOCUMENT IS THE PROPERTY OF JERRY TURNER & ASSOCIATES, INC. ALL RIGHTS ARE RESERVED AND ANY REPRODUCTION, REPRODUCTION, OR OTHER USE OF THIS DOCUMENT WITHOUT THE PRIOR PERMISSION OF JERRY TURNER & ASSOCIATES, INC. IS EXPRESSLY PROHIBITED.