

# THE CONSERVANCY AT JORDAN LAKE

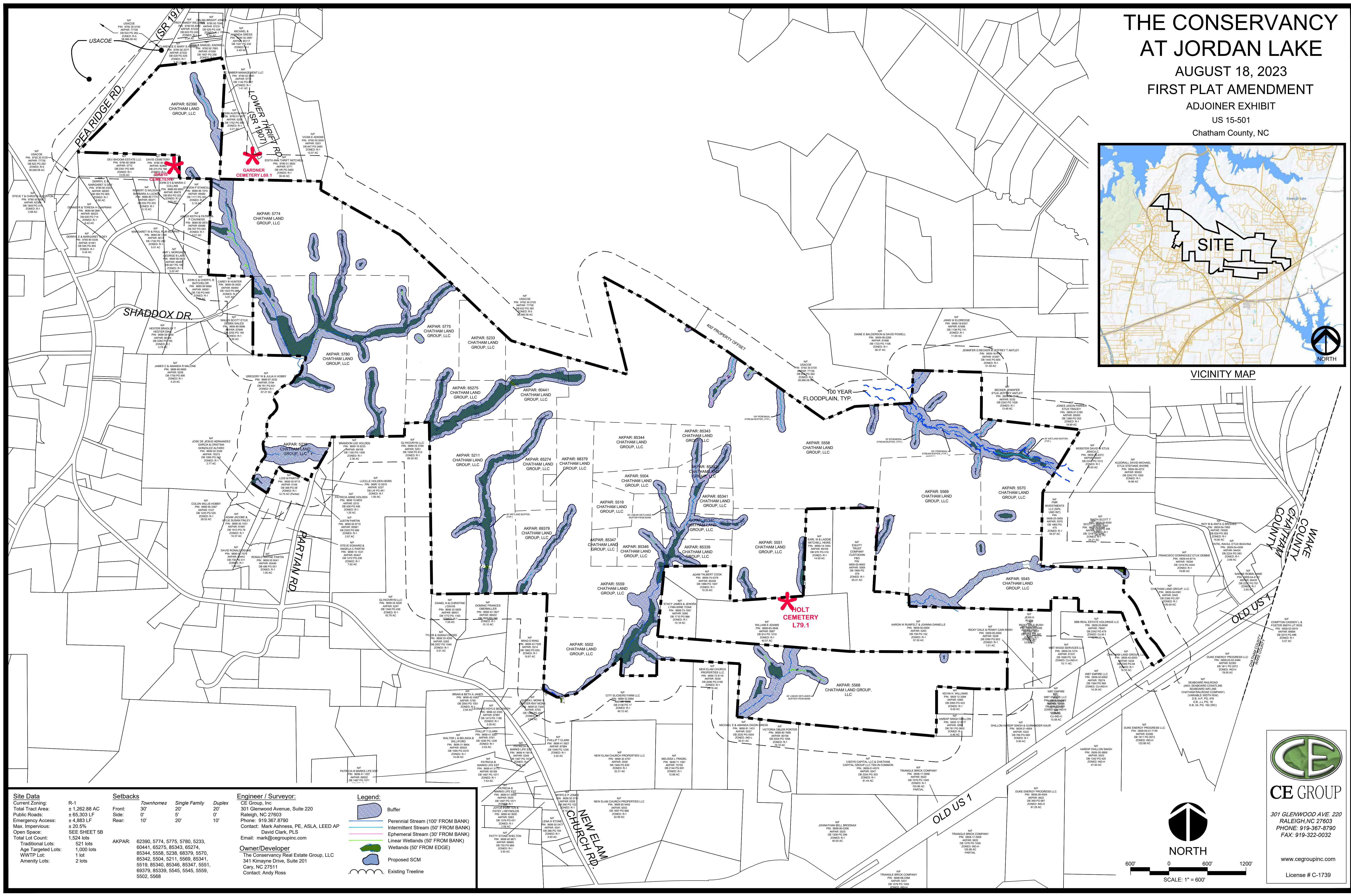
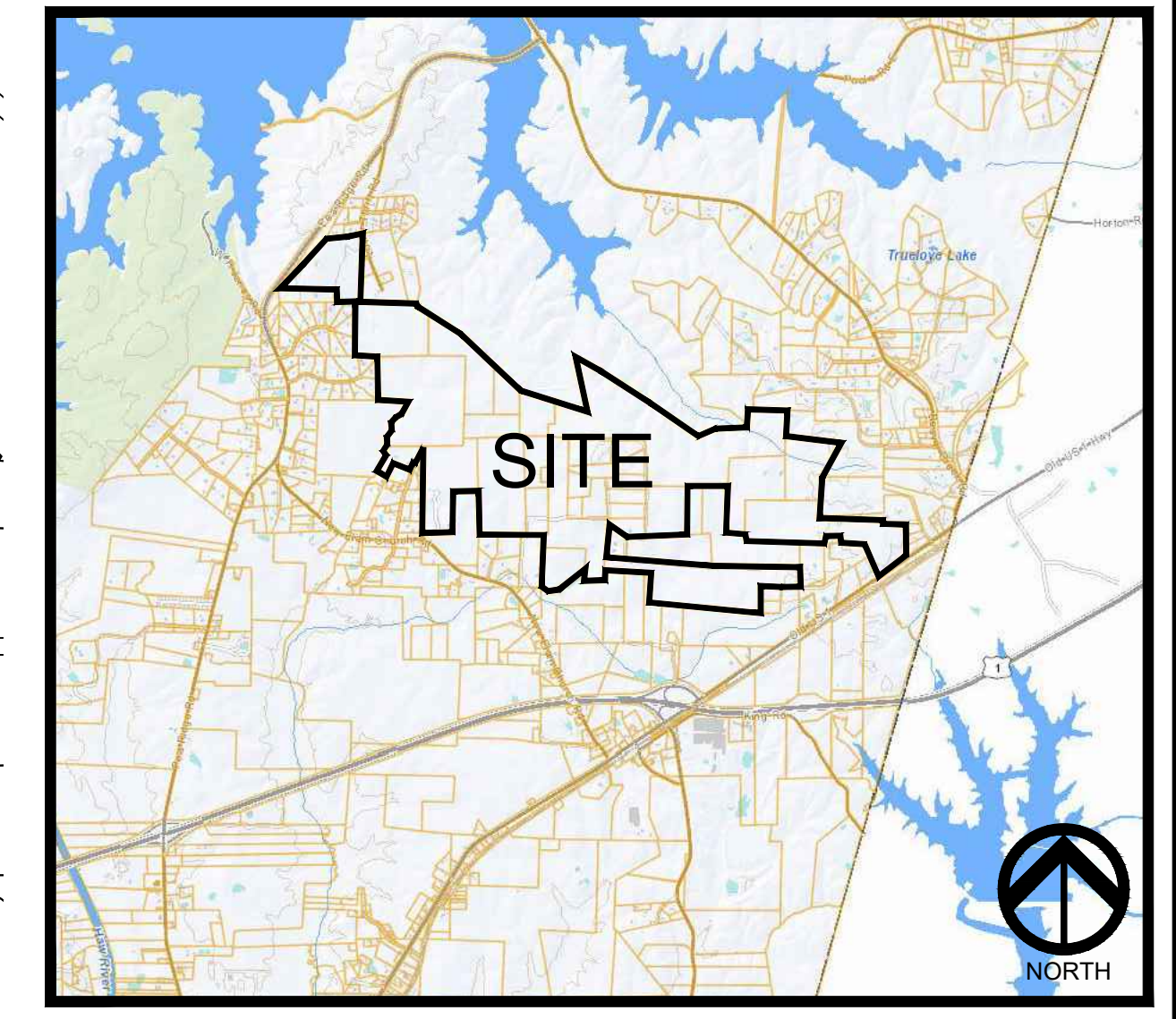
AUGUST 18, 2023

FIRST PLAT AMENDMENT

ADJOINER EXHIBIT

US 15-501

Chatham County, NC



<b>Site Data</b>	
Current Zoning:	R-1
Total Tract Area:	± 1,262.88 AC
Public Roads:	± 65,303 LF
Emergency Access:	± 4,883 LF
Max. Impervious:	± 20.5%
Open Space:	SEE SHEET 5B
Total Lot Count:	1,524 lots
Traditional Lots:	521 lots
Age Targeted Lots:	1,000 lots
WWTP Lot:	1 lot
Amenity Lots:	2 lots

<b>Setbacks</b>	
Front:	30'
Side:	0'
Rear:	10'

<b>Legend:</b>	
[Blue hatched area]	Perennial Stream (100' FROM BANK)
[Blue wavy area]	Intermittent Stream (50' FROM BANK)
[Blue dashed area]	Ephemeral Stream (30' FROM BANK)
[Green wavy area]	Linear Wetlands (50' FROM BANK)
[Blue wavy area]	Wetlands (50' FROM EDGE)
[Blue dashed line]	Proposed SCM
[Blue dashed line]	Existing Treeline

**Engineer / Surveyor:**  
 CE Group, Inc.  
 301 Glenwood Avenue, Suite 220  
 Raleigh, NC 27603  
 Phone: 919-367-8790  
 Contact: Mark Ashness, PE, ASLA, LEED AP  
 David Clark, PLS  
 Email: mark@cegroupinc.com

**Owner/Developer:**  
 The Conservancy Real Estate Group, LLC  
 341 Kimaeye Drive, Suite 201  
 Cary, NC 27511  
 Contact: Andy Ross

**CE GROUP**  
 301 GLENWOOD AVE. 220  
 RALEIGH, NC 27603  
 PHONE: 919-367-8790  
 FAX: 919-322-0032  
 www.cegroupinc.com  
 License # C-1739

