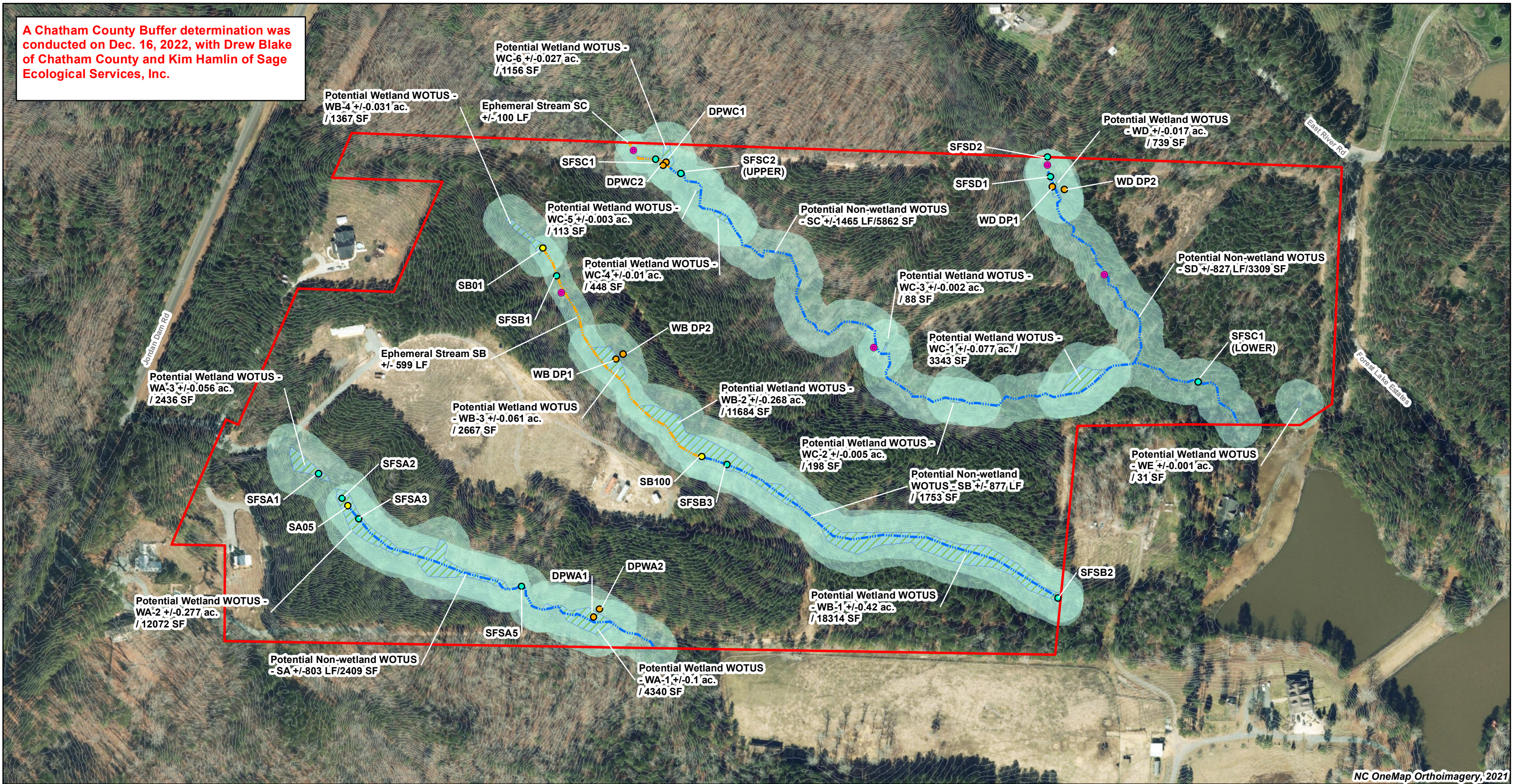
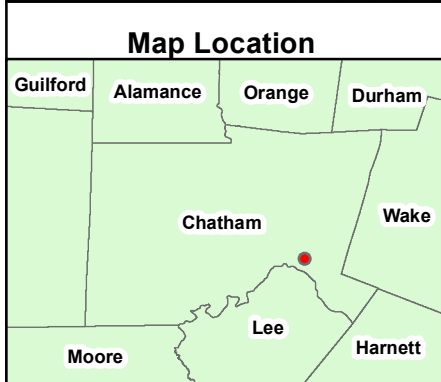


A Chatham County Buffer determination was conducted on Dec. 16, 2022, with Drew Blake of Chatham County and Kim Hamlin of Sage Ecological Services, Inc.



NC OneMap Orthoimagery, 2021



### Legend

- Project Study Area
- Intermittent Stream
- Ephemeral Stream
- Wetland
- Riparian Buffer
- Flag
- Stream Form
- Data Point
- Culvert
- 1' Contours

### Revised PJD Sketch Map

1092 Jordan Dam Road  
Sage Project #2021.053

Prepared by: K. Hamlin

January 23, 2023

1 inch = 200 feet

0 200 400 Feet

### Figure 3

Sage Ecological Services, Inc.  
Office: 919-335-6757  
Cell: 919-559-1537