



FIRST-CLASS  
U.S. POSTAGE  
**PAID**  
UNITED MAIL



Working today for a smarter tomorrow.

NESTE RESINS CORPORATION  
1000 HOLCOMB WOODS PKWY STE 342  
ROSWELL, GA 30076-2586

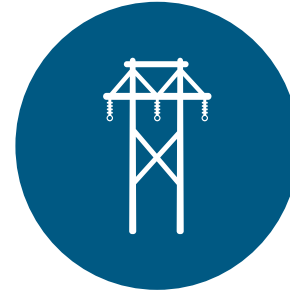
# Please join us to learn more about a project near you.

Duke Energy is committed to providing our customers with safe, reliable and increasingly clean energy. We continually evaluate our network of power lines that serve homes, schools and businesses to determine the best solutions to help meet the region's energy needs now and in the future. To help keep this commitment, we are making improvements to the power grid in your area.

We will be installing a monopole at our existing Moncure Substation at 1785 Corinth Road, Moncure, NC. The new monopole is a network device that communicates data between substations and will improve reliability and service to our customers.

We would like to invite you to our informational meeting **Thursday, March 2** from 6 p.m. to 7 p.m. to learn more about the project. This meeting will be held at the Chatham County Agriculture and Conference Center, 1192 US 64 W Bus, Pittsboro, NC 27312

We will have subject matter experts on hand to answer questions you may have.



**For more information about the project, contact us at our toll-free line or email below:**

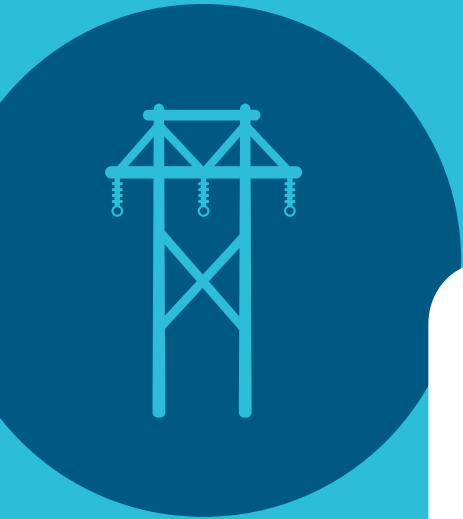
**Email:** [CarolinasEast@duke-energy.com](mailto:CarolinasEast@duke-energy.com)

**Call:** 866.297.5886



Transmission - Public Engagement  
NCRH 05 | 410 South Wilmington Street  
Raleigh, NC 27601

FIRST-CLASS  
U.S. POSTAGE  
**PAID**  
UNITED MAIL



**Working today for a smarter tomorrow.**

ARAUCO PANELS USA LLC  
300 TECHNOLOGY CENTER WAY - STE 350  
ROCK HILL, SC 29730-0145

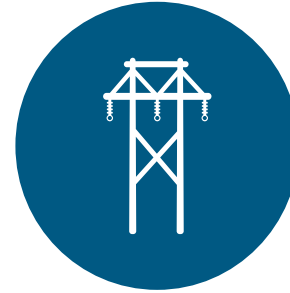
# Please join us to learn more about a project near you.

Duke Energy is committed to providing our customers with safe, reliable and increasingly clean energy. We continually evaluate our network of power lines that serve homes, schools and businesses to determine the best solutions to help meet the region's energy needs now and in the future. To help keep this commitment, we are making improvements to the power grid in your area.

We will be installing a monopole at our existing Moncure Substation at 1785 Corinth Road, Moncure, NC. The new monopole is a network device that communicates data between substations and will improve reliability and service to our customers.

We would like to invite you to our informational meeting **Thursday, March 2** from 6 p.m. to 7 p.m. to learn more about the project. This meeting will be held at the Chatham County Agriculture and Conference Center, 1192 US 64 W Bus, Pittsboro, NC 27312

We will have subject matter experts on hand to answer questions you may have.



**For more information about the project, contact us at our toll-free line or email below:**

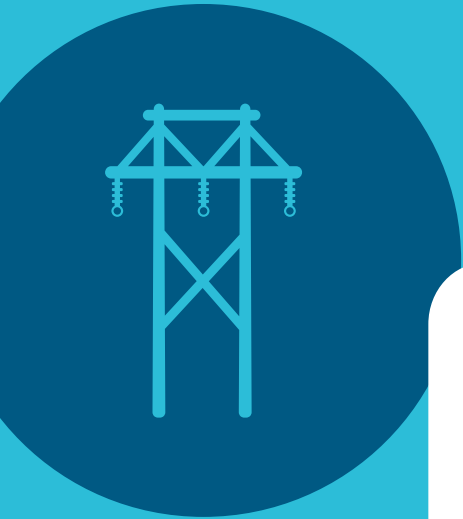
**Email:** [CarolinasEast@duke-energy.com](mailto:CarolinasEast@duke-energy.com)

**Call:** 866.297.5886



Transmission - Public Engagement  
NCRH 05 | 410 South Wilmington Street  
Raleigh, NC 27601

FIRST-CLASS  
U.S. POSTAGE  
**PAID**  
UNITED MAIL



Working today for a smarter tomorrow.

CITY OF SANFORD  
P.O. BOX 3729  
SANFORD, NC 27331

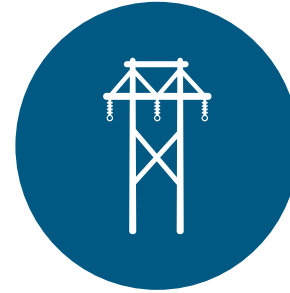
# Please join us to learn more about a project near you.

Duke Energy is committed to providing our customers with safe, reliable and increasingly clean energy. We continually evaluate our network of power lines that serve homes, schools and businesses to determine the best solutions to help meet the region's energy needs now and in the future. To help keep this commitment, we are making improvements to the power grid in your area.

We will be installing a monopole at our existing Moncure Substation at 1785 Corinth Road, Moncure, NC. The new monopole is a network device that communicates data between substations and will improve reliability and service to our customers.

We would like to invite you to our informational meeting **Thursday, March 2** from 6 p.m. to 7 p.m. to learn more about the project. This meeting will be held at the Chatham County Agriculture and Conference Center, 1192 US 64 W Bus, Pittsboro, NC 27312

We will have subject matter experts on hand to answer questions you may have.



**For more information about the project, contact us at our toll-free line or email below:**

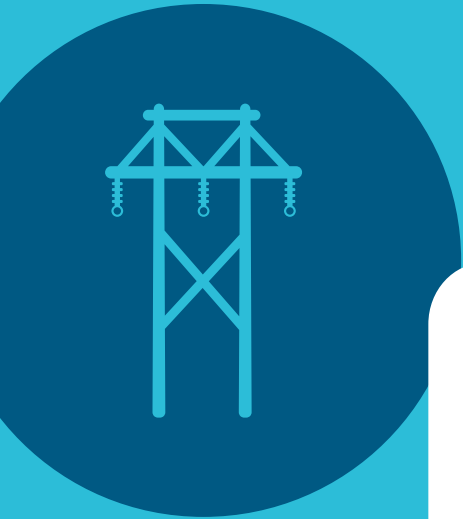
**Email:** [CarolinasEast@duke-energy.com](mailto:CarolinasEast@duke-energy.com)

**Call:** 866.297.5886



Transmission - Public Engagement  
NCRH 05 | 410 South Wilmington Street  
Raleigh, NC 27601

FIRST-CLASS  
U.S. POSTAGE  
**PAID**  
UNITED MAIL



Working today for a smarter tomorrow.

VINFAST MANUFACTURING US LLC  
2717 NEW HILL OLIVE CHAPEL RD.  
NEW HILL, NC 27562

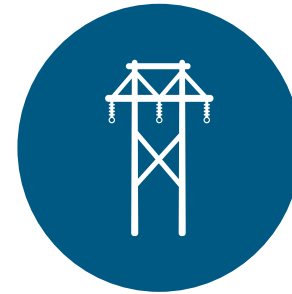
# Please join us to learn more about a project near you.

Duke Energy is committed to providing our customers with safe, reliable and increasingly clean energy. We continually evaluate our network of power lines that serve homes, schools and businesses to determine the best solutions to help meet the region's energy needs now and in the future. To help keep this commitment, we are making improvements to the power grid in your area.

We will be installing a monopole at our existing Moncure Substation at 1785 Corinth Road, Moncure, NC. The new monopole is a network device that communicates data between substations and will improve reliability and service to our customers.

We would like to invite you to our informational meeting **Thursday, March 2** from 6 p.m. to 7 p.m. to learn more about the project. This meeting will be held at the Chatham County Agriculture and Conference Center, 1192 US 64 W Bus, Pittsboro, NC 27312

We will have subject matter experts on hand to answer questions you may have.



**For more information about the project, contact us at our toll-free line or email below:**

**Email:** [CarolinasEast@duke-energy.com](mailto:CarolinasEast@duke-energy.com)

**Call:** 866.297.5886





Transmission - Public Engagement  
NCRH 05 | 410 South Wilmington Street  
Raleigh, NC 27601

FIRST-CLASS  
U.S. POSTAGE  
**PAID**  
UNITED MAIL



Working today for a smarter tomorrow.

DICKENS FRANK KENT ETUX KIM C  
250 DICKENS FARM RD  
MONCURE, NC 27559

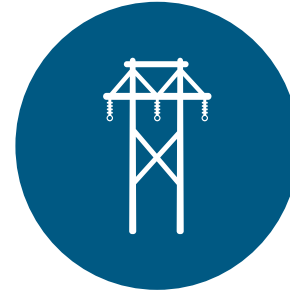
# Please join us to learn more about a project near you.

Duke Energy is committed to providing our customers with safe, reliable and increasingly clean energy. We continually evaluate our network of power lines that serve homes, schools and businesses to determine the best solutions to help meet the region's energy needs now and in the future. To help keep this commitment, we are making improvements to the power grid in your area.

We will be installing a monopole at our existing Moncure Substation at 1785 Corinth Road, Moncure, NC. The new monopole is a network device that communicates data between substations and will improve reliability and service to our customers.

We would like to invite you to our informational meeting **Thursday, March 2** from 6 p.m. to 7 p.m. to learn more about the project. This meeting will be held at the Chatham County Agriculture and Conference Center, 1192 US 64 W Bus, Pittsboro, NC 27312

We will have subject matter experts on hand to answer questions you may have.



**For more information about the project, contact us at our toll-free line or email below:**

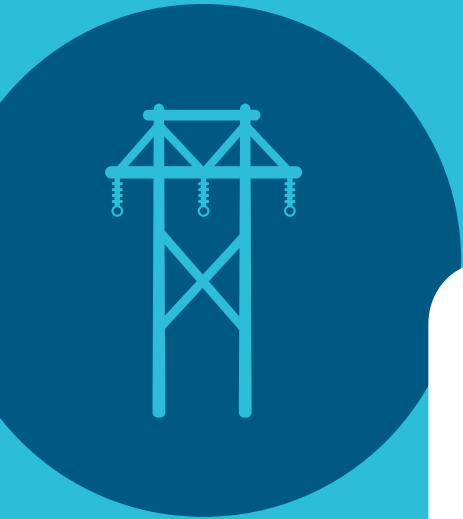
**Email:** [CarolinasEast@duke-energy.com](mailto:CarolinasEast@duke-energy.com)

**Call:** 866.297.5886



Transmission - Public Engagement  
NCRH 05 | 410 South Wilmington Street  
Raleigh, NC 27601

FIRST-CLASS  
U.S. POSTAGE  
**PAID**  
UNITED MAIL



Working today for a smarter tomorrow.

MANSFIELD DAVID J ETUX SANDRA L  
191 MONCURE FLATWOOD RD.  
MONCURE, NC 27559-9569

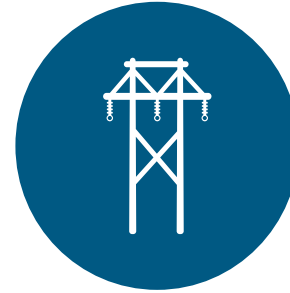
# Please join us to learn more about a project near you.

Duke Energy is committed to providing our customers with safe, reliable and increasingly clean energy. We continually evaluate our network of power lines that serve homes, schools and businesses to determine the best solutions to help meet the region's energy needs now and in the future. To help keep this commitment, we are making improvements to the power grid in your area.

We will be installing a monopole at our existing Moncure Substation at 1785 Corinth Road, Moncure, NC. The new monopole is a network device that communicates data between substations and will improve reliability and service to our customers.

We would like to invite you to our informational meeting **Thursday, March 2** from 6 p.m. to 7 p.m. to learn more about the project. This meeting will be held at the Chatham County Agriculture and Conference Center, 1192 US 64 W Bus, Pittsboro, NC 27312

We will have subject matter experts on hand to answer questions you may have.



**For more information about the project, contact us at our toll-free line or email below:**

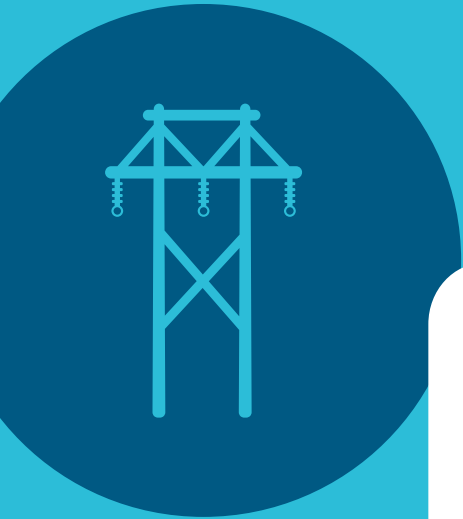
**Email:** [CarolinasEast@duke-energy.com](mailto:CarolinasEast@duke-energy.com)

**Call:** 866.297.5886



Transmission - Public Engagement  
NCRH 05 | 410 South Wilmington Street  
Raleigh, NC 27601

FIRST-CLASS  
U.S. POSTAGE  
**PAID**  
UNITED MAIL



Working today for a smarter tomorrow.

CHEROKEE SANFORD GROUP LLC  
P.O. BOX 3547  
JOHNSON CITY, TN 37602

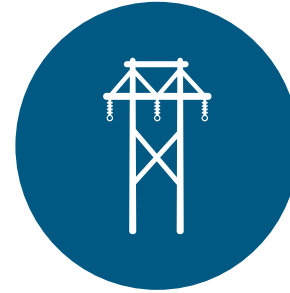
# Please join us to learn more about a project near you.

Duke Energy is committed to providing our customers with safe, reliable and increasingly clean energy. We continually evaluate our network of power lines that serve homes, schools and businesses to determine the best solutions to help meet the region's energy needs now and in the future. To help keep this commitment, we are making improvements to the power grid in your area.

We will be installing a monopole at our existing Moncure Substation at 1785 Corinth Road, Moncure, NC. The new monopole is a network device that communicates data between substations and will improve reliability and service to our customers.

We would like to invite you to our informational meeting **Thursday, March 2** from 6 p.m. to 7 p.m. to learn more about the project. This meeting will be held at the Chatham County Agriculture and Conference Center, 1192 US 64 W Bus, Pittsboro, NC 27312

We will have subject matter experts on hand to answer questions you may have.



**For more information about the project, contact us at our toll-free line or email below:**

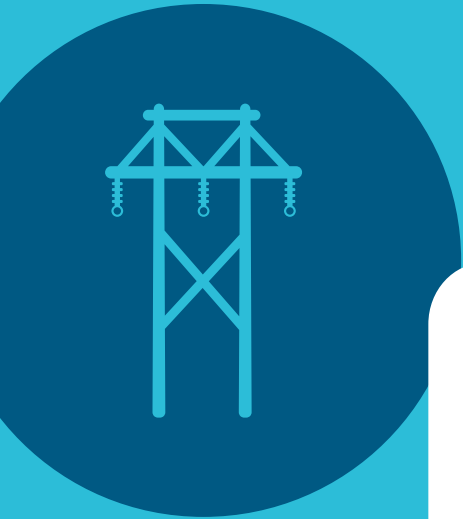
**Email:** [CarolinasEast@duke-energy.com](mailto:CarolinasEast@duke-energy.com)

**Call:** 866.297.5886



Transmission - Public Engagement  
NCRH 05 | 410 South Wilmington Street  
Raleigh, NC 27601

FIRST-CLASS  
U.S. POSTAGE  
**PAID**  
UNITED MAIL



Working today for a smarter tomorrow.

CHEROKEE LAND CO LLC  
315 CHANTICLAIR DR  
APEX, NC 27502

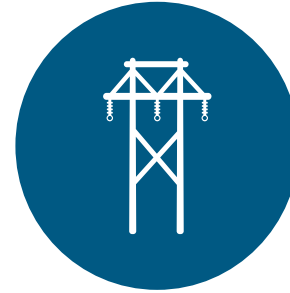
# Please join us to learn more about a project near you.

Duke Energy is committed to providing our customers with safe, reliable and increasingly clean energy. We continually evaluate our network of power lines that serve homes, schools and businesses to determine the best solutions to help meet the region's energy needs now and in the future. To help keep this commitment, we are making improvements to the power grid in your area.

We will be installing a monopole at our existing Moncure Substation at 1785 Corinth Road, Moncure, NC. The new monopole is a network device that communicates data between substations and will improve reliability and service to our customers.

We would like to invite you to our informational meeting **Thursday, March 2** from 6 p.m. to 7 p.m. to learn more about the project. This meeting will be held at the Chatham County Agriculture and Conference Center, 1192 US 64 W Bus, Pittsboro, NC 27312

We will have subject matter experts on hand to answer questions you may have.



**For more information about the project, contact us at our toll-free line or email below:**

**Email:** [CarolinasEast@duke-energy.com](mailto:CarolinasEast@duke-energy.com)

**Call:** 866.297.5886