

# APPEARANCE COMMISSION PLAN REVIEW CIRCLE K - R&R 2720294

CHAPEL HILL, NORTH CAROLINA 27517  
CHATHAM COUNTY

PRELIMINARY  
NOT FOR  
CONSTRUCTION

THIS DRAWING PREPARED AT THE  
**RALEIGH OFFICE**  
5410 Trinity Road, Suite 102 | Raleigh, NC 27607  
TEL 919.866-4951 FAX 919.833-8124 www.timmons.com

REVISION DESCRIPTION

YOUR VISION ACHIEVED THROUGH OURS.

DATE	REVISION DESCRIPTION
06/20/2023	
	DRAWN BY J. YOKLEY
	DESIGNED BY P. BARBEAU
	CHECKED BY P. BARBEAU
	SCALE AS SHOWN

### OWNERS:

THE PANTRY INC &  
C/O CIRCLE K STORES INC  
PROPERTY TAX DEPARTMENT  
PO BOX 52085  
PHEONIX, AZ 52085

MANNS CHAPEL II LLC  
C/O LEON H CHAPLIN JR PO BOX 705  
LINVILLE, NC 28646

### DEVELOPER:

CIRCLE K STORES INC  
ANDY PRIOLO  
1100 SITUS COURT  
SUITE 100  
RALEIGH, NC 27606  
PH: (919) 566-1714  
FAX: (919) 777-5139

### CIVIL ENGINEER:

TIMMONS GROUP  
5410 TRINITY ROAD  
SUITE 102  
RALEIGH, NC 27607

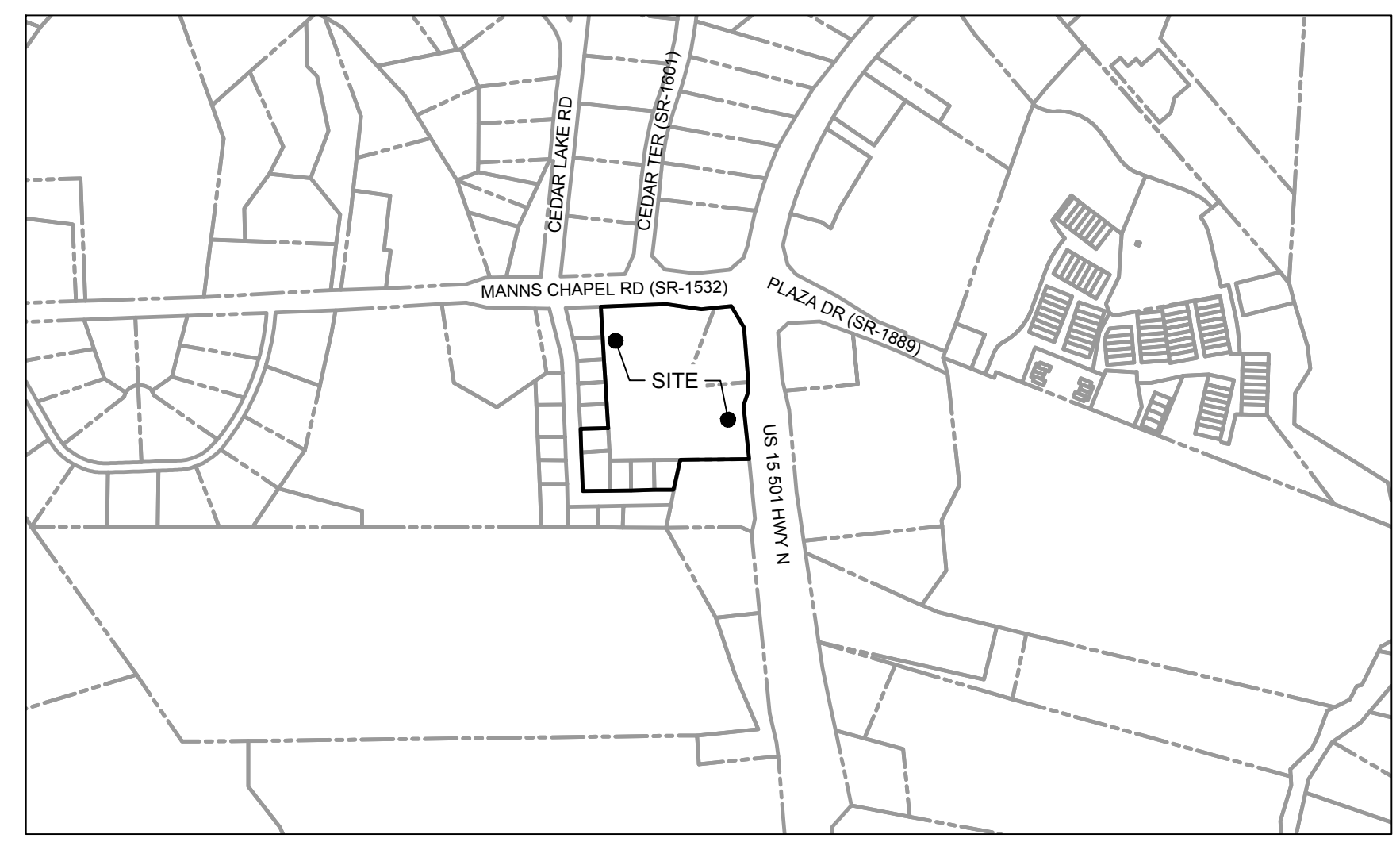
PROJECT MANAGER:  
PATRICK BARBEAU, PE  
PH: (919) 866-4512  
PATRICK.BARBEAU@TIMMONS.COM

### SURVEYOR:

BOWMAN CONSULTING GROUP, LTD.  
MICHAEL L. RAY, PLS  
4006 BARRETT DRIVE  
SUITE 104  
RALEIGH, NC 27609  
PH: (919) 553-6570

### SITE DATA TABLE

PROJECT:	CIRCLE K - R&R 2720294
OWNERS:	THE PANTRY INC & C/O CIRCLE K STORES INC MANNS CHAPEL II LLC
PROJECT ADDRESS(ES):	11399 US HWY 15 501 N CHAPEL HILL, NC 27517
PARCEL NUMBER(S):	2642, 2641, 2562, 2564, 2563, 2542, 2560
DEED(S):	BK 675 PG 1074; BK 2020 PG 19; BK 2020 PG 16; BK 2020 PG 16; BK 2020 PG 16; BK 2020 PG 16; BK 2020 PG 16
EXISTING ZONING(S):	B-1 (GENERAL BUSINESS DISTRICT) CU-B-1 (CONDITIONAL USE DISTRICT - GENERAL BUSINESS DISTRICT)
FLOOD ZONE:	NOT LOCATED IN FLOOD HAZARDS AREA PER FEMA MAP #3710977600K
EXISTING GROSS SITE AREA:	±6.33 AC.
PROPOSED SITE AREA:	±4.87 AC.
PROPOSED OUTPARCEL AREA:	±1.46 AC.
VEHICLE PARKING SUMMARY: REQUIRED	1 SPACE PER 200 SQUARE FEET OF GROSS FLOOR AREA = 5,200 SF / 200 SF = 26 SPACES
VEHICLE PARKING SUMMARY: PROVIDED	26 SPACES PROVIDED (2 ADA)



VICINITY MAP  
1"=500'

### Sheet List Table

Sheet Number	Sheet Title
EX0.0	COVER SHEET
EX1.0	EXISTING CONDITIONS
EX2.0	SITE PLAN EXHIBIT
EX2.1	LANDSCAPE PLAN EXHIBIT
EX2.2	LANDSCAPE NOTES & DETAILS
EX3.0	VICINITY MAP EXHIBIT
A2.03	EXTERIOR ELEVATIONS MATERIALS AND COLORS
CA-3A	FUEL CANOPY - COLUMN DETAILS
CA-3B	FUEL CANOPY - COLUMN DETAILS
CA-3C	FUEL CANOPY - COLUMN DETAILS
CA-4	DIESEL CANOPY PLANS AND ELEVATIONS

**TIMMONS GROUP**  
NORTH CAROLINA LICENSE NO. C-1652

CIRCLE K - R&R 2720294  
CHAPEL HILL - CHATHAM COUNTY - NORTH CAROLINA  
COVER SHEET

JOB NO.  
37630.073

SHEET NO.  
EX0.0

PRELIMINARY - NOT RELEASED FOR CONSTRUCTION

S:\323237630-073-2720294\_Chatham\CONC\DWG\Sheet\Sheet\AC\37630.073-COVR.AC.dwg | Plotted on 6/20/2023 9:21 AM | by jmf.yokley

These plans and associated documents are the exclusive property of TIMMONS GROUP and may not be reproduced in whole or in part and shall not be used for any purpose whatsoever, inclusive, but not limited to construction, bidding, and/or construction staking without the express written consent of TIMMONS GROUP.



**LEGEND**

IPF - IRON PIPE FOUND	MM DRAINAGE	SPRINKLER BOX
IRP - IRON ROD FOUND	MM SANITARY	SPRINKLER HEAD
AMP - ALUMINUM ENCUMBER FOUND	MM ELECTRIC	SPRINKLER VALVE
IPF - IRON PIPE SET	MM TELEPHONE	GAS TEST LOCATION
CMF - CONCRETE MONUMENT		FUEL LID
PKS - PK NAIL SET		GAS VALVE
PKS - PK NAIL FOUND		FLAG POLE
RSP - RAILROAD SPIKE FOUND		SHRUB BUSH
CSF - COTTON SPRIKLE FOUND		OR SAMPLING
WV - WATER VALVE		BOLLARD
WV - WATER VALVE		BORERHOLE
WV - WATER VALVE		AC UNIT
WV - WATER VALVE		MALIBOX
WV - WATER VALVE		CLEAN OUT
WV - WATER VALVE		GUY
WV - WATER VALVE		HANDICAP PARKING
WV - WATER VALVE		WELL
WV - WATER VALVE		MONITORING WELL
WV - WATER VALVE		ROOF DRAIN
WV - WATER VALVE		ROOF SPIGOT
WV - WATER VALVE		DEED LINE
WV - WATER VALVE		LINE NOT SURVEYED
WV - WATER VALVE		STORM LINE
WV - WATER VALVE		SANITARY LINE
WV - WATER VALVE		FENCE
WV - WATER VALVE		GAS VALVE
WV - WATER VALVE		OVERHEAD POWER LINE
WV - WATER VALVE		PAINTED GAS LINE
WV - WATER VALVE		PAINTED POWER LINE
WV - WATER VALVE		PAINTED WATER LINE
WV - WATER VALVE		PAINTED TELEPHONE LINE
WV - WATER VALVE		EDGE OF TREELINE

**PRELIMINARY  
NOT FOR  
CONSTRUCTION**

THIS DRAWING PREPARED AT THE  
**RALEIGH OFFICE**  
 5410 Trinity Road, Suite 102 | Raleigh, NC 27607  
 TEL 919.866.9511 FAX 919.853.8124 WWW.TIMMONSGROUP.COM

YOUR VISION ACHIEVED THROUGH OURS.

DATE	06/20/2023
DRAWN BY	J. YOKLEY
DESIGNED BY	P. BARBEAU
CHECKED BY	P. BARBEAU
SCALE	AS SHOWN

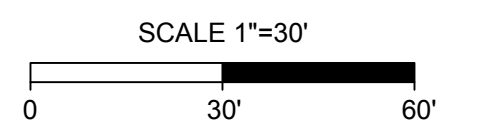
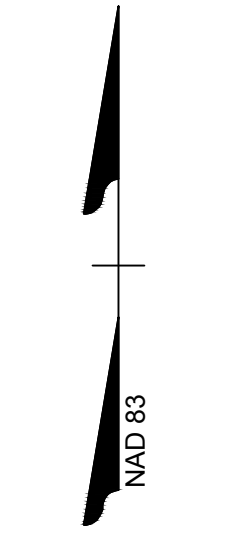
**TIMMONS GROUP**

NORTH CAROLINA LICENSE NO. C-1652

**CIRCLE K - R&R 2720294**  
 CHAPEL HILL - CHATHAM COUNTY - NORTH CAROLINA

**EXISTING CONDITIONS**

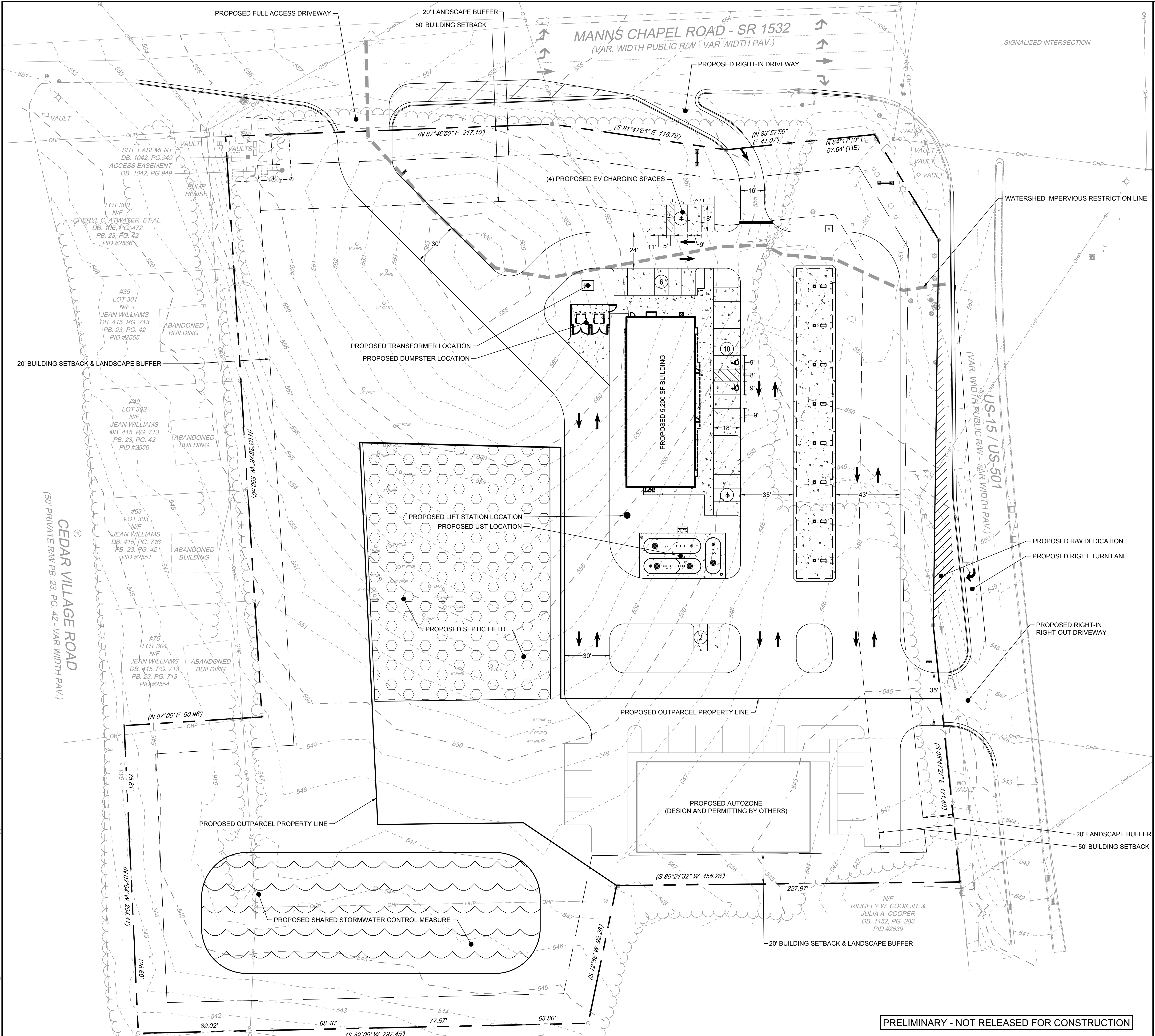
JOB NO.	37630.073
SHEET NO.	EX1.0



**PRELIMINARY - NOT RELEASED FOR CONSTRUCTION**

S:\33237630.073\2720294 - Chatham\CD\DWG\Sheet\Title\AC\37630.073-EX1S-AC.dwg | Plotted on 6/20/2023 9:21 AM | by Jeff Yokley





**LEGEND**

IFP - IRON PIPE FOUND	MS - MANHOLE	SPRINKLER BOX
IRP - IRON ROD FOUND	MS - SANITARY	SPRINKLER HEAD
AMP - ALUMINUM MEASUREMENT POINT	ME - METER	SPRINKLER VALVE
IP - IRON PIPE SET	ME - TELEPHONE	GAS TEST LOCATION
CP - COMPUTED EASEMENT POINT	ST - STORM	FUEL LID
CM - CONCRETE MONUMENT	IN - INLET	GAS VALVE
PKS - PAK NAIL SET	ST - STORM INLET	FLAG POLE
PKS - PAK NAIL FOUND	EB - ELECTRIC BOX	SHRUB BUSH
RSF - RAILROAD SPIKE FOUND	TE - TELEPHONE PEDESTAL	OR SAPPING
CSF - COTTON SPINKLE FOUND	CT - CABLE TV PEDESTAL	BOLLARD
BP - BACKFLOW PREVENTER	SI - SIGN	BOREHOLE
WV - WATER VALVE	EM - ELECTRIC METER	AC UNIT
TE - TELEPHONE VALVE	WM - WATER METER	MALIBOX
TC - TRAFFIC CONTROL BOX	WV - WATER VALVE	CLEAN OUT
VP - POWER VALVE	PH - FIRE HYDRANT	GUY
UV - UTILITY VALVE	PP - POWER POLE	HANDICAP PARKING
WF - WETLAND FLAG	LS - LIGHT	WELL
RCP - REINFORCED CONCRETE PIPE	YL - YARD LIGHT	MONITORING WELL
CMF - CORRUGATED METAL PIPE	GL - GROUND LAMP	ROOF DRAIN
VCP - VITRIFIED CLAY PIPE	HC - HEATING VENTILATION AND AIR CONDITIONING	WATER SPIGOT
DIP - DUCTILE IRON PIPE	LSA - LANDSCAPED AREA	DEED LINE
HDPPE - HIGH DENSITY POLYETHYLENE PIPE	R/W - RIGHT-OF-WAY	LINE NOT SURVEYED
FES - FLARED END SECTION	P/L - PROPERTY LINE	STORM LINE
AKM - FIBER OPTIC MARKER	C/L - CENTERLINE	SANITARY LINE
MRK - GAS MARKER	N/S - NOT TO SCALE	FENCE
TVP - TELEVISION PEDESTAL	GV - GAS VALVE	OVERHEAD POWER LINE
SIP - SIGNAL POLE	GI - GRATE INLET	PAINTED GAS LINE
RVAC - HEATING VENTILATION AND AIR CONDITIONING	WI - WATER INLET	PAINTED POWER LINE
	CI - CURB INLET	PAINTED TELEPHONE LINE
	TRC - TOP BACK OF CURB	PAINTED WATER LINE
	DB - DEED BOOK	
	PE - PLAT BOOK	
	PS - PLAT	
	SF - SQUARE FEET	
	CONC - CONCRETE	
		EDGE OF TREELINE

**SITE DATA TABLE**

PROJECT:	CIRCLE K - R&R 2720294
OWNERS:	THE PANTRY INC & C/O CIRCLE K STORES INC MANN'S CHAPEL II LLC
PROJECT ADDRESS(ES):	11399 US HWY 15 501 N CHAPEL HILL, NC 27517
PARCEL NUMBER(S):	2642, 2641, 2562, 2564, 2563, 2542, 2560
DEED(S):	BK 675 PG 1074; BK 2020 PG 19; BK 2020 PG 16; BK 2020 PG 16; BK 2020 PG 16; BK 2020 PG 16; BK 2020 PG 16
EXISTING ZONING(S):	B-1 (GENERAL BUSINESS DISTRICT) CU-B-1 (CONDITIONAL USE DISTRICT - GENERAL BUSINESS DISTRICT)
FLOOD ZONE:	NOT LOCATED IN FLOOD HAZARDS AREA PER FEMA MAP #3710977600K
EXISTING GROSS SITE AREA:	+6.33 AC.
PROPOSED SITE AREA:	+4.87 AC.
PROPOSED OUTPARCEL AREA:	+1.46 AC.
VEHICLE PARKING SUMMARY: REQUIRED	1 SPACE PER 200 SQUARE FEET OF GROSS FLOOR AREA = 5,200 SF / 200 SF = 26 SPACES
VEHICLE PARKING SUMMARY: PROVIDED	26 SPACES PROVIDED (2 ADA)

**PRELIMINARY  
NOT FOR  
CONSTRUCTION**

THIS DRAWING PREPARED AT THE  
**RALEIGH OFFICE**  
5410 Trinity Road, Suite 102 | Raleigh, NC 27607  
TEL 919.866.9591 FAX 919.833.8124 www.timmons.com

YOUR VISION ACHIEVED THROUGH OURS.

DATE	06/20/2023
DRAWN BY	J. YOKLEY
DESIGNED BY	P. BARBEAU
CHECKED BY	P. BARBEAU
SCALE	AS SHOWN

**TIMMONS GROUP**

NORTH CAROLINA LICENSE NO. C-1652

**CIRCLE K - R&R 2720294**

CHATHAM COUNTY COUNTY - NORTH CAROLINA

**SITE PLAN EXHIBIT**

JOB NO. 37630.073

SHEET NO. EX2.0

These plans and associated documents are the exclusive property of TIMMONS GROUP and may not be reproduced in whole or in part and shall not be used for any purpose whatsoever, inclusive, but not limited to construction, bidding, and/or construction staking without the express written consent of TIMMONS GROUP.

**PRELIMINARY - NOT RELEASED FOR CONSTRUCTION**

S:\323237630\073\2720294\_Chatham\CONC\DWG\Sheet\Title\AC\37630.073-SITE-AC.dwg | Plotted on 6/20/2023 9:21 AM | by Jeff Yokley





**PLANT SCHEDULE**

SYMBOL	TREE	QTY.	BOTANICAL NAME	COMMON NAME
	DECIDUOUS SHADE TREE			
(Circle with dot)	WO	16	QUERCUS PHELLOS	WILLOW OAK
(Circle with cross)	OC	21	QUERCUS LYRATA	OVERCUP OAK
SHRUBS				
(Circle with asterisk)	NH	8	ILEX CORNUTA 'NEEDLEPOINT'	NEEDLEPOINT HOLLY
(Circle with star)	YH	14	ILEX VOMITORIA 'NANA'	DWARF YAUPON HOLLY
(Circle with hexagon)	LC	27	LOROPETALUM CHINENSIS CULTIVARS	LOROPETALUM

**CHATHAM COUNTY LANDSCAPE REQUIREMENTS**

REQUIREMENT & CALCULATION	SIZE (AT TIME OF PLANTING)
<b>PARKING LOT:</b> CHATHAM COUNTY DESIGN GUIDELINES SECTION 7: LANDSCAPE PLANTINGS AND TREES ARE REQUIRED IN LANDSCAPE ISLANDS. A MIX OF TREES AND LANDSCAPE PLANTS SHALL BE PLANTED BETWEEN PARKING BAYS AND AROUND THE PERIMETER OF PARKING AREAS TO PROVIDE SCREENING, SHADE AND VISUAL VARIETY.	TREES: 2.5" CALIPER SHRUBS: 24" MIN. HT
<b>STREET TREES:</b> CHATHAM COUNTY DESIGN GUIDELINES SECTION 8: STREET TREES SHALL BE REQUIRED EVERY 40'.	2.5" CALIPER
<b>FOUNDATION PLANTINGS &amp; SCREENING:</b> GROUND MOUNTED ELECTRICAL TRANSFORMERS SHALL BE SCREEN ON THE TWO MOST VISIBLE SIDES. PLANTINGS ADJACENT TO BUILDING WALLS SHOULD BE INCLUDED ALONG SIDES OF BUILDINGS WHERE DEVOID OF ARCHITECTURAL INTEREST.	24" MIN. HT
<b>BUFFERS:</b> TYPE A: MINIMUM SPACING SHALL GENERALLY BE NO WIDER THAN 20 FEET BETWEEN TREE TRUNKS (BUT MAY BE WIDER DEPENDING ON TREE TYPE), WITH EVERGREEN SHRUBS SPACED FIVE FEET ON CENTER. TYPE B: MINIMUM SPACING SHALL GENERALLY BE NO WIDER THAN 30 FEET BETWEEN TREE TRUNKS (BUT MAY BE WIDER DEPENDING ON TREE TYPE), WITH EVERGREEN SHRUBS SPACING RANGING FROM FIVE TO EIGHT FEET ON CENTER. TYPE C: MINIMUM SPACING SHALL GENERALLY BE NO WIDER THAN 40 FEET BETWEEN CANOPY TREE TRUNKS AND NO WIDER THAN 20 FEET BETWEEN ORNAMENTAL TREE TRUNKS.	TREES: 2.5" CALIPER SHRUBS: 24" MIN. HT
NORTH: TYPE B & C SOUTH: TYPE B & NONE (TO BE MET WITH EXISTING VEGETATION) EAST: TYPE A (TO BE MET USING EXISTING VEGETATION) WEST: TYPE A & B (TO BE MET USING EXISTING VEGETATION)	

**PRELIMINARY NOT FOR CONSTRUCTION**

THIS DRAWING PREPARED AT THE  
**RALEIGH OFFICE**  
5410 Trinity Road, Suite 102 | Raleigh, NC 27607  
TEL 919.866.4951 FAX 919.833.8124 www.timmons.com

YOUR VISION ACHIEVED THROUGH OURS.

REVISION DESCRIPTION	DATE

DATE: 06/20/2023  
DRAWN BY: J. YOKLEY  
DESIGNED BY: P. BARBEAU  
CHECKED BY: P. BARBEAU  
SCALE: AS SHOWN

TIMMONS GROUP

NORTH CAROLINA LICENSE NO. C-1652

CIRCLE K - R&R 2720294

CHAPEL HILL - CHATHAM COUNTY - NORTH CAROLINA

LANDSCAPE PLAN EXHIBIT

JOB NO. 37630.073  
SHEET NO. EX2.1

PRELIMINARY - NOT RELEASED FOR CONSTRUCTION

S:\32327850-073-2720294 - Chatham\CONC\DWG-Sheet\Chatham\37630.073-PLN-AC.dwg | Plotted on 6/20/2023 8:22 AM | By: Jeff Yokley



PRELIMINARY  
NOT FOR  
CONSTRUCTION

THIS DRAWING PREPARED AT THE  
RALEIGH OFFICE  
5410 Trinity Road, Suite 102 | Raleigh, NC 27607  
TEL 919.866.4951 | FAX 919.833.8124 | www.timmons.com

YOUR VISION ACHIEVED THROUGH OURS.

REVISION DESCRIPTION	DATE
	06/20/2023
DRAWN BY	J. YOKLEY
DESIGNED BY	P. BARBEAU
CHECKED BY	P. BARBEAU
SCALE	AS SHOWN

**TIMMONS GROUP**  
NORTH CAROLINA LICENSE NO. C-1652  
CIRCLE K - R&R 2720294  
CHAPEL HILL - CHATHAM COUNTY COUNTY - NORTH CAROLINA  
LANDSCAPE NOTES & DETAILS

JOB NO.  
37630.073  
SHEET NO.  
EX2.2

**LANDSCAPE NOTES:**

**PRE-CONSTRUCTION**

- PRIOR TO CONSTRUCTION LOCATE ALL UNDERGROUND UTILITIES WITHIN AND ADJACENT TO THE WORK AREA. LOCATIONS OF EXISTING BURIED UTILITY LINES SHOWN ON THE PLANS ARE BASED UPON BEST AVAILABLE INFORMATION AND ARE TO BE CONSIDERED APPROXIMATE. PROTECT ALL UTILITIES. REPAIR ALL DAMAGE TO UTILITIES, STRUCTURES, SITE APPURTENANCES, ETC. WHICH OCCURS AS A RESULT OF CONSTRUCTION.
- CONTRACTOR ENGAGED IN LANDSCAPE IMPLEMENTATION SHALL BE A LANDSCAPE CONTRACTOR REGISTERED IN THE STATE OF NORTH CAROLINA.
- VERIFY ALL PLANT MATERIAL QUANTITIES ON PLANS PRIOR TO BIDDING. PLANT LIST TOTALS ARE FOR CONVENIENCE ONLY AND MUST BE VERIFIED.
- PLANT MATERIAL SUBSTITUTIONS CAN ONLY OCCUR WITH PRIOR WRITTEN APPROVAL BY LANDSCAPE ARCHITECT.
- PRIOR TO THE COMMENCEMENT OF ANY ACTIVITIES REQUIRING A BUILDING OR ZONING PERMIT AN ON-SITE PRE-CONSTRUCTION CONFERENCE SHALL TAKE PLACE WITH THE DEVELOPER AND THE ADMINISTRATOR TO REVIEW PROCEDURES FOR THE PROTECTION AND MANAGEMENT OF ALL LANDSCAPE ELEMENTS TO REMAIN.
- ALL PLANT MATERIALS ARE SUBJECT TO LANDSCAPE ARCHITECT APPROVAL BEFORE, DURING, AND AFTER INSTALLATION.
  - o ANY PLANT MATERIAL WHICH IS DISEASED, DISTRESSED, DEAD, OR REJECTED (PRIOR TO SUBSTANTIAL COMPLETION) SHALL BE PROMPTLY REMOVED FROM THE SITE AND REPLACED WITH MATERIAL OF THE SAME SPECIES, QUANTITY, AND SIZE.
- ALL PLANT MATERIALS AND INSTALLATION SHALL COMPLY WITH RECOMMENDATIONS AND REQUIREMENTS OF ANSI Z60.1 "AMERICAN STANDARD FOR NURSERY STOCK".
  - o ALL PLANT MATERIAL SHALL BE HEALTHY, VIGOROUS, AND FREE OF PESTS AND DISEASE.
  - o ALL PLANT MATERIAL SHALL BE CONTAINER GROWN OR BALLED AND BURLAPPED AS INDICATED IN THE PLANT LIST.
  - o ALL TREES SHALL HAVE A STRAIGHT TRUNK AND FULL HEAD.

**CONSTRUCTION/INSTALLATION**

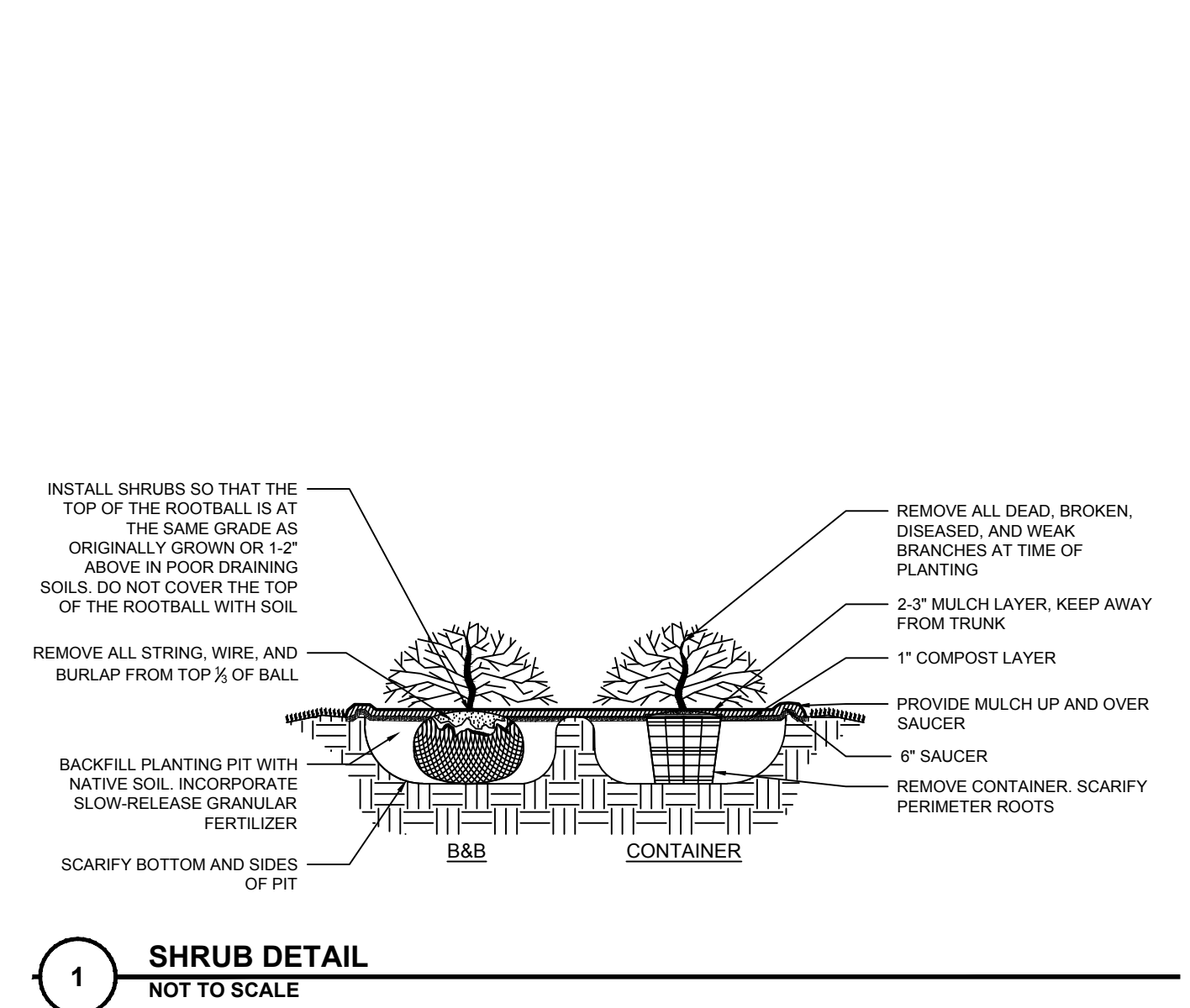
- CONTRACTOR IS ENCOURAGED TO COMPLETE TEMPORARY OR PERMANENT SEEDING IN STAGES FOR SOIL STABILIZATION AS AREAS ARE COMPLETED AFTER GRADING. THIS PLAN DOES NOT PRESENT ANY TEMPORARY STABILIZATION REQUIRED AS PART OF SWPPP PLAN.
- CONTRACTOR SHALL TAKE 3 REPRESENTATIVE SOIL SAMPLES OF EACH PROPOSED PLANT BED AND SUBMIT COPIES OF THE RESULTS TO THE LANDSCAPE ARCHITECT PRIOR TO BEGINNING WORK.
- STUMPS LABELED FOR REMOVAL SHALL BE EXCAVATED, NOT GROUND. REMOVE ALL DEBRIS FROM THE HOLE. FILL WITH TOP SOIL, COMPACT, AND RAKE SMOOTH PRIOR TO INSTALLING NEW PLANT MATERIAL.
- CONTRACTOR IS RESPONSIBLE FOR DELIVERY SCHEDULE AND PROTECTION BETWEEN DELIVERY AND PLANTING TO MAINTAIN HEALTHY PLANT CONDITIONS.
- ALL LANDSCAPED AND LAWN AREAS ARE TO RECEIVE A MINIMUM OF 4" OF TOPSOIL.
- ALL LANDSCAPE ISLANDS SHALL BE GRADED FOR POSITIVE DRAINAGE WITH NO LOW SPOTS ALLOWING WATER TO BE TRAPPED.
- INSTALL LANDSCAPE PLANTINGS AT ENTRANCES/EXITS AND PARKING AREAS ACCORDING TO PLANS SO MATERIAL WILL NOT INTERFERE WITH SIGHT DISTANCES.
- THE SIZE OF THE PLANTING AREA AND SIZE OF PLANT MATERIAL AT MATURITY SHALL ALLOW FOR A 2.5' BUMPER OVERHANG FROM THE BACK OF CURB.
- ALL TREES MUST BE GUYED OR STAKED AS DETAILED.
- AREAS DAMAGED FROM PLANT RELOCATION OR OTHER ACTIVITIES OF LANDSCAPE CONTRACTOR TO BE RESEEDED AND ESTABLISHED AT NO ADDITIONAL COST TO THE OWNER.
- CONTRACTOR IS RESPONSIBLE FOR WATERING ALL PLANT MATERIAL DURING INSTALLATION AND UNTIL FINAL INSPECTION AND ACCEPTANCE BY OWNER. CONTRACTOR SHALL NOTIFY OWNER OF CONDITIONS WHICH AFFECTS THE GUARANTEE. IT MAY BE NECESSARY TO TRUCK IN NON-CITY WATER TO MEET PLANT NEEDS.
- USE HERBICIDES, PESTICIDES, AND FERTILIZER IN A MANNER CONSISTENT WITH THE FEDERAL INSECTICIDE, FUNGICIDE, AND RODENTICIDE ACT AND IN ACCORDANCE WITH LABEL RESTRICTIONS.
- ALL LAWN AREAS TO BE SEEDDED SHALL USE A LOCALLY GROWN COMMERCIAL MIX MEETING LATEST STATE OF NORTH CAROLINA AGRICULTURE STANDARDS FOR SEED AND PLANT CERTIFICATION.
- SEEDING AND STRAW NOTES FOR LAWN AREAS:
  - o RIP THE ENTIRE AREA TO DEPTH OF NOT LESS THAN 6".
  - o REMOVE ALL LOOSE ROCKS, ROOTS, AND OTHER OBSTRUCTIONS LEAVING SURFACE SMOOTH AND UNIFORM. DISPOSE OF WASTE MATERIAL OFF-SITE.
  - o CHISEL COMPACTED AREAS AND SPREAD TOPSOIL TO SPECIFIED DEPTH.
  - o APPLY AGRICULTURAL LIME, FERTILIZER, AND SUPER PHOSPHATE UNIFORMLY AND MIX WITH SOIL. APPLY SOIL AMENDMENTS PER REQUIRED SOIL ANALYSIS RECOMMENDATIONS.
  - o CONTINUE TILAGE UNTIL A WELL PULVERIZED, FIRM, REASONABLY UNIFORM SEEDBED IS PREPARED.
  - o SEED ON A FRESHLY PREPARED SEEDBED AND COVER SEED LIGHTLY WITH SEEDING EQUIPMENT OR CULTIPACK AFTER SEEDING.
  - o MULCH IMMEDIATELY AFTER SEEDING AND ANCHOR MULCH.
  - o INSPECT ALL SEEDBED AREAS AND IF POSSIBLE, MAKE NECESSARY REPAIRS OR RESEEDINGS WITHIN THE PLANTING SEASON. IF GRANDSTAND SHOULD BE OVER 60% DAMAGED, REESTABLISH FOLLOWING ORIGINAL LIME, FERTILIZER, AND SEEDING RATES.
  - o ANCHOR TACK WITH LIQUID ASPHALT AT 400 GAL/ACRE OR EMULSIFIED ASPHALT AT 300 GAL/ACRE.
- BIODEGRADABLE WEED MATTING (ALL-PRO WEED MAT OR APPROVED EQUAL) SHALL BE REQUIRED IN SHRUB BEDS ADJACENT TO BUILDING FACADE.
- PLANTING BEDS TO BE COMPLETELY COVERED WITH A MINIMUM 4" DEPTH OF MATERIAL FROM A LOCAL SOURCE HARVESTED IN A SUSTAINABLE MANNER. REFER TO LANDSCAPE SCHEME FOR MATERIAL SPECIFICATIONS.
- MULCH ALL PLANT BEDS AND TREE RINGS WITH FRESH, CLEAN MATERIAL PER SPECIFICATIONS. ALL MULCH EDGES SHALL BE NEATLY TUCKED. ALL STRING AND/OR BAILING WIRE SHALL BE REMOVED. DUST SHRUBS AND GROUND COVER AFTER MULCHING TO REMOVE LOOSE MATERIAL FROM PLANTS. DO NOT PLACE MULCH IN CONTACT WITH THE TREE TRUNK. KEEP A MINIMUM OF 4" AWAY FROM TREE TRUNK OR BASE OF PLANT.
- MULCH AND NO-MOW MIXES SHALL BE REPLENISHED AS NEEDED, ESPECIALLY AFTER HEAVY RAIN EVENTS. IF NO-MOW MIX GERMINATES AT A RATE OF LESS THAN 90%, THEN REMOVE OTHER SPECIES AND RESEED.

**TEMPORARY IRRIGATION**

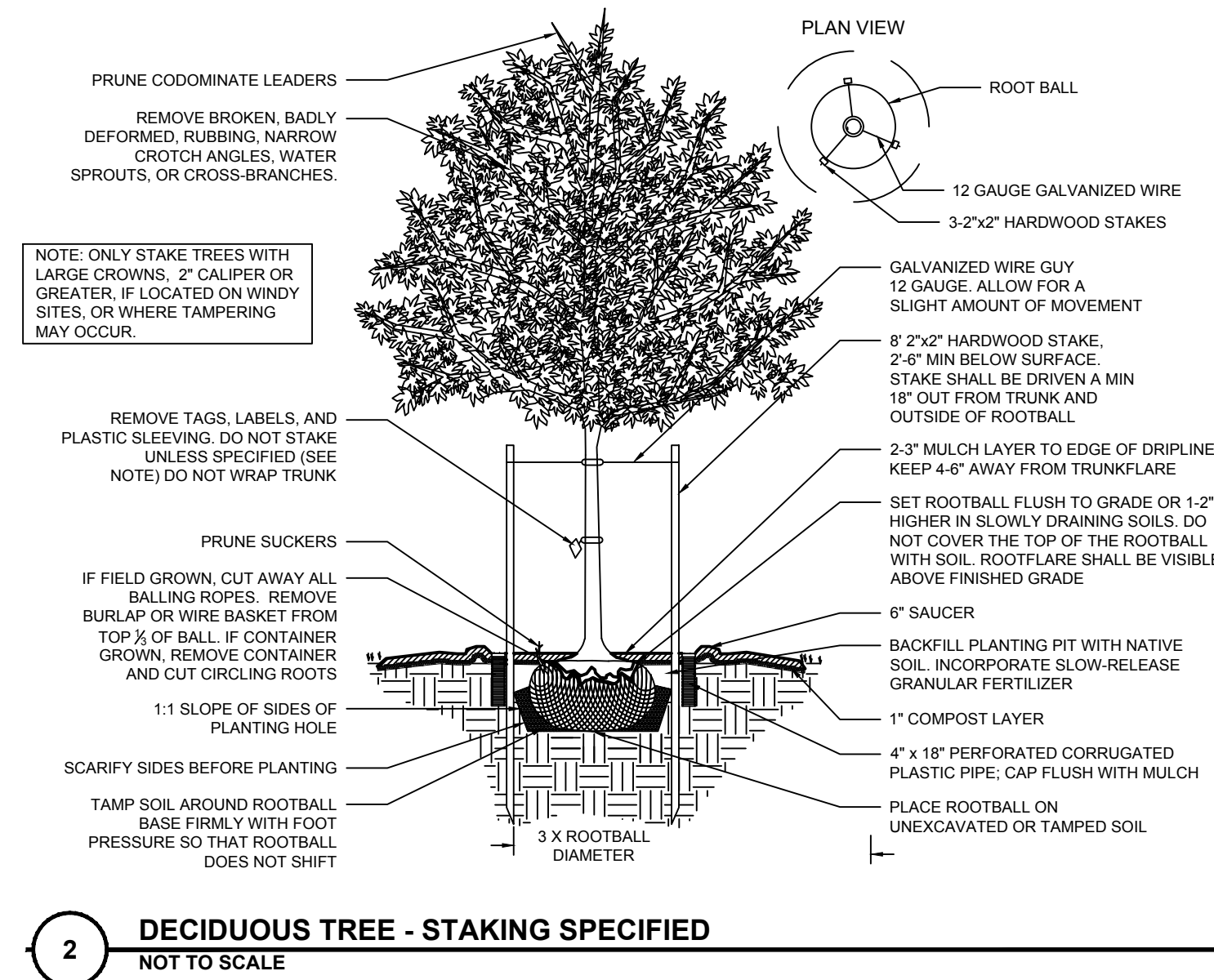
- CONTRACTOR TO PROVIDE AND MAINTAIN TEMPORARY IRRIGATION FOR SOD WITHIN THE STORMWATER CONTROL MEASURE UNTIL SOD BECOMES ESTABLISHED.

**INSPECTIONS/GUARANTEE**

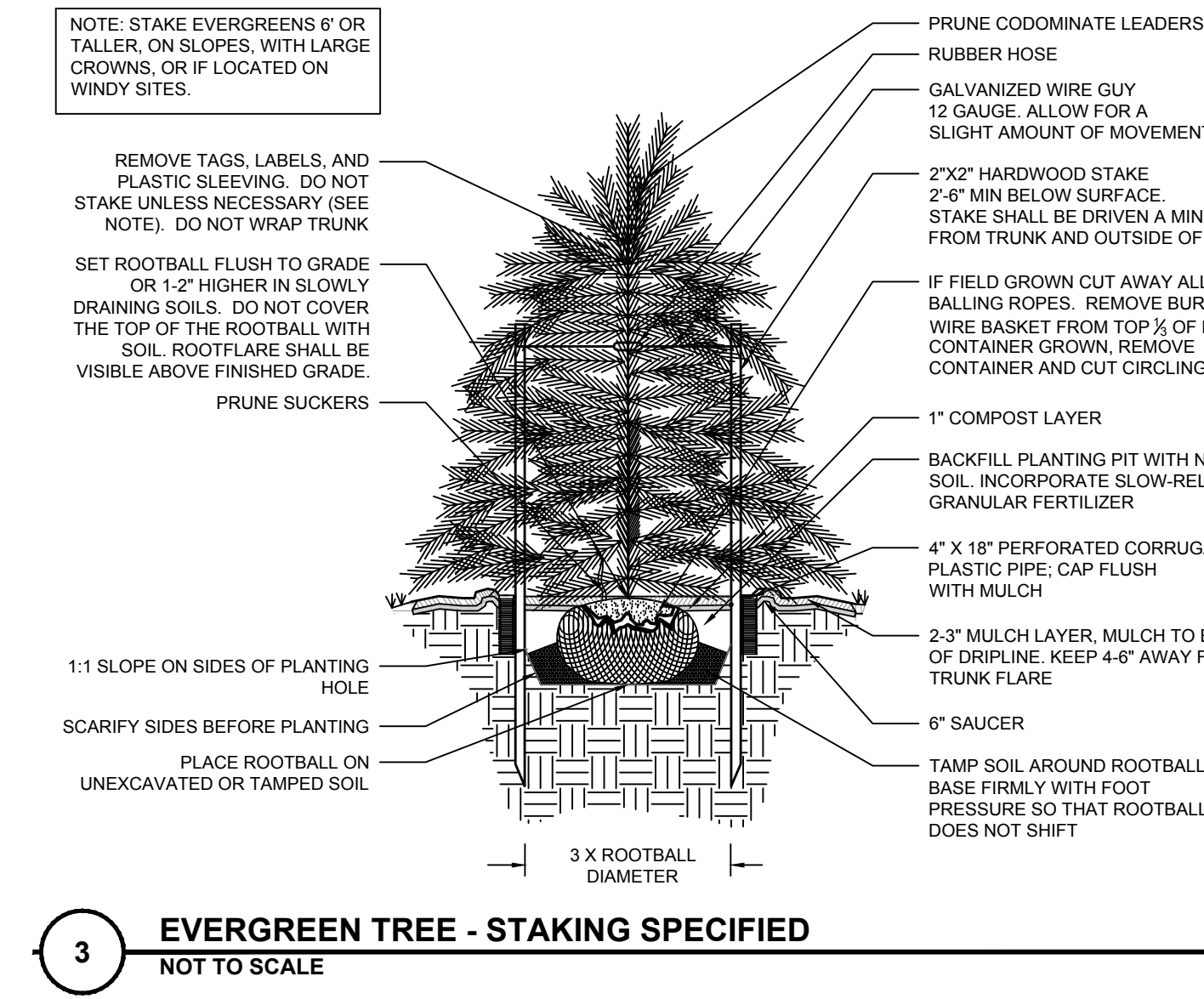
- LANDSCAPE CONTRACTOR SHALL NOTIFY GENERAL CONTRACTOR UPON COMPLETION OF LANDSCAPE INSTALLATION. CONTRACTOR WILL VERIFY COMPLETENESS INCLUDING THE REPLACEMENT OF ALL DEAD PLANT MATERIAL. CONTRACTOR IS RESPONSIBLE FOR SCHEDULING A FINAL INSPECTION BY LANDSCAPE ARCHITECT.
- PLANT MATERIAL QUANTITIES AND SIZES WILL BE INSPECTED FOR COMPLIANCE WITH APPROVED PLANS BY A SITE PLAN REVIEW AGENT PRIOR TO THE RELEASE OF THE CERTIFICATE OF OCCUPANCY.
- CONTRACTOR TO GUARANTEE ALL PLANT MATERIALS FOR ONE FULL YEAR AGAINST DEFECTS INCLUDING DEATH AND UNSATISFACTORY GROWTH. WARRANTY PERIOD SHALL BEGIN UPON CERTIFICATE OF OCCUPANCY OR WHEN THE OWNER TAKES OVER MAINTENANCE, WHICHEVER COMES FIRST.



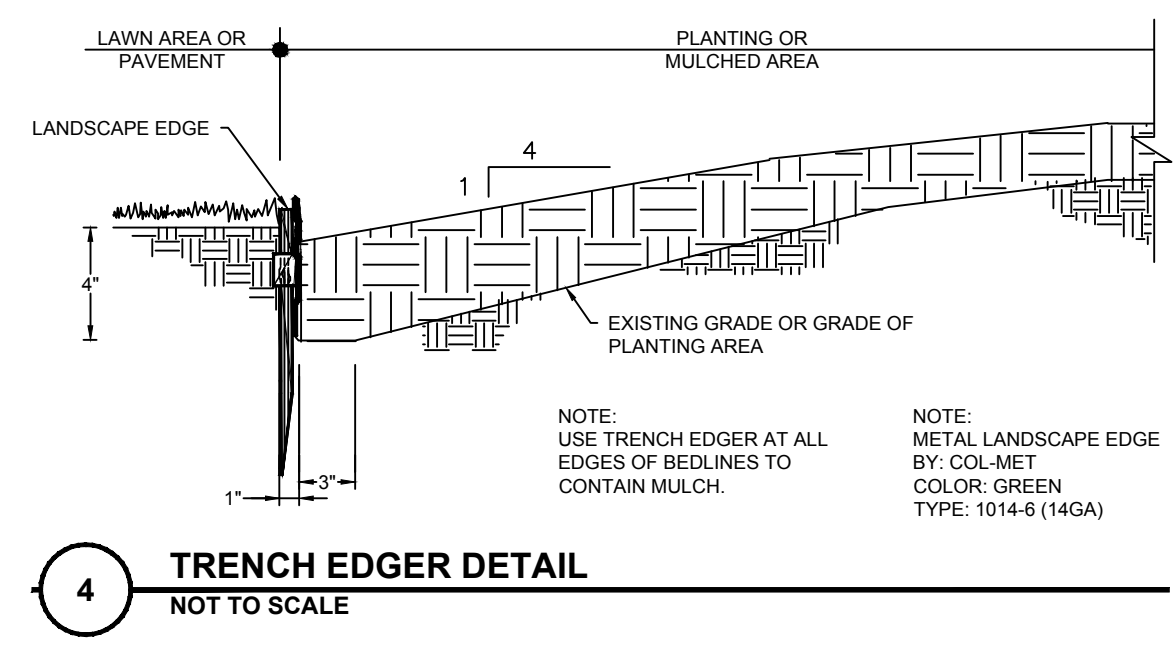
**1 SHRUB DETAIL**  
NOT TO SCALE



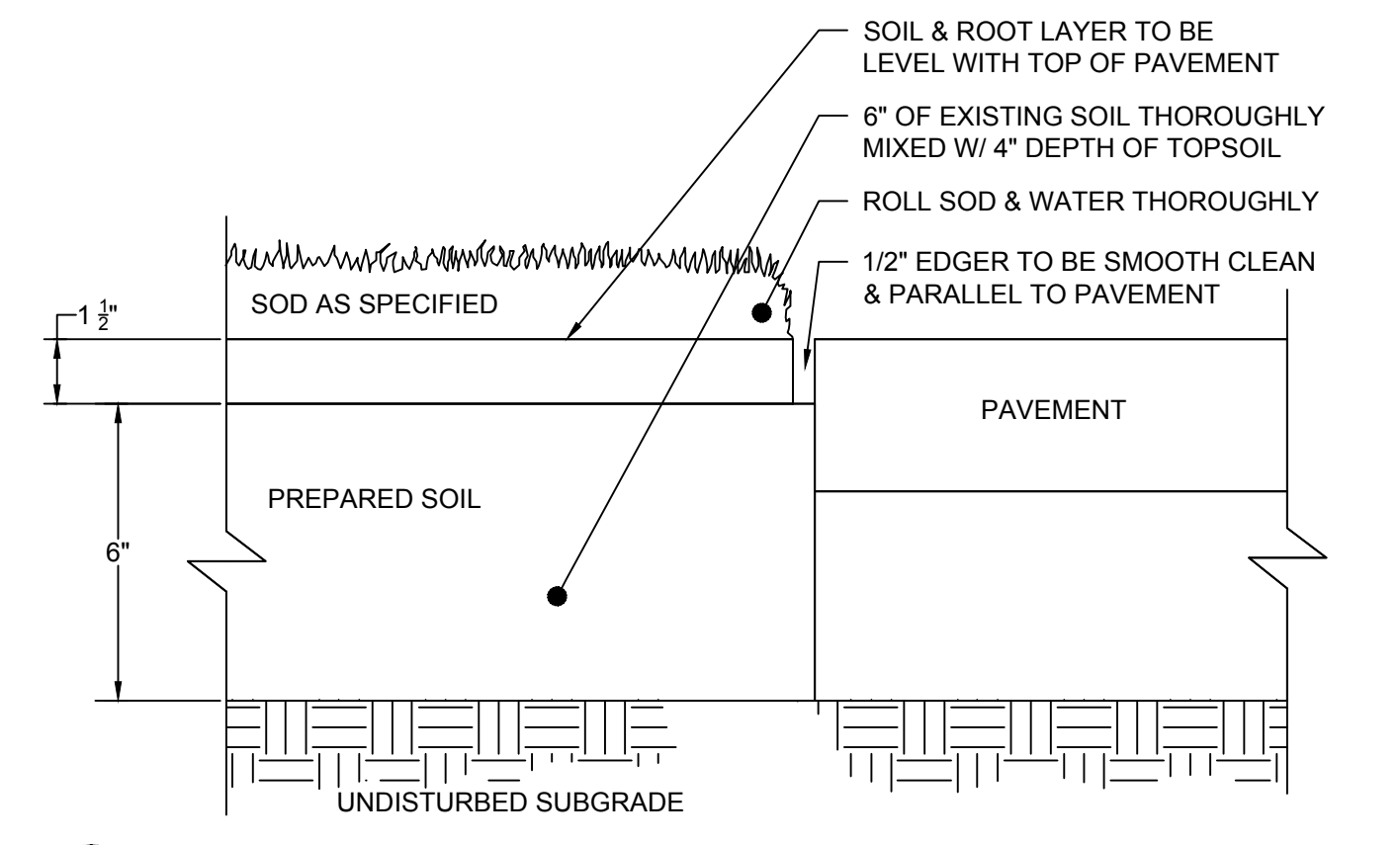
**2 DECIDUOUS TREE - STAKING SPECIFIED**  
NOT TO SCALE



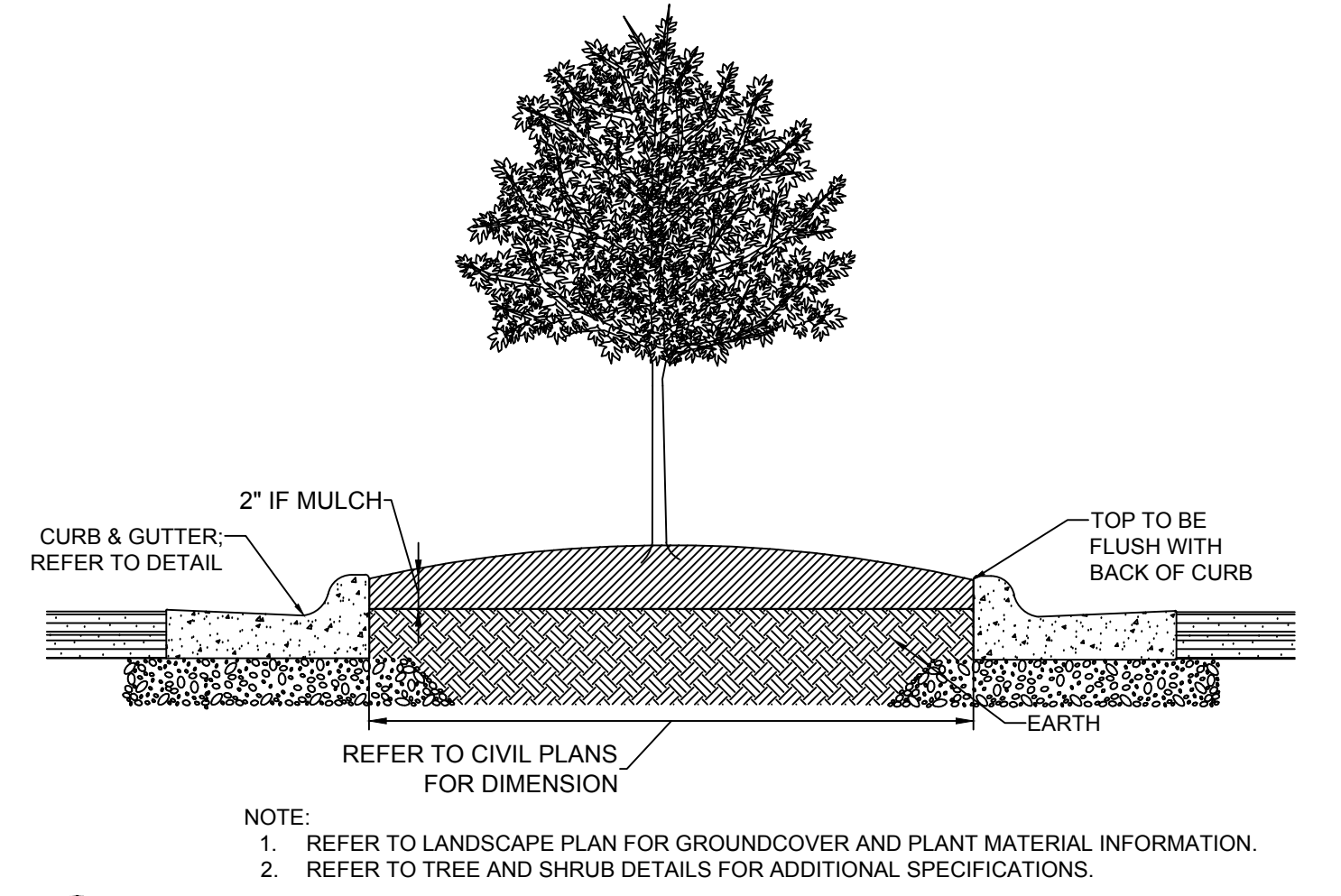
**3 EVERGREEN TREE - STAKING SPECIFIED**  
NOT TO SCALE



**4 TRENCH EDGER DETAIL**  
NOT TO SCALE



**5 SOD DETAIL**  
NOT TO SCALE



**6 LANDSCAPE ISLAND DETAIL**  
NOT TO SCALE

PRELIMINARY - NOT RELEASED FOR CONSTRUCTION

S:\32637850-073-2720294 - Chatham\CONC\DWG\Sheet\ENR\AC\37630.073-PL\NT-AC.dwg | Printed on 6/20/2023 8:22 AM | by Jeff Yokley

These plans and associated documents are the exclusive property of TIMMONS GROUP and may not be reproduced in whole or in part and shall not be used for any purpose whatsoever, inclusive, but not limited to construction, bidding, and/or construction staking without the express written consent of TIMMONS GROUP.





PRELIMINARY - NOT RELEASED FOR CONSTRUCTION

PRELIMINARY  
NOT FOR  
CONSTRUCTION

THIS DRAWING PREPARED AT THE  
**RALEIGH OFFICE**  
5410 Trinity Road, Suite 102 | Raleigh, NC 27607  
TEL 919.866.4951 | FAX 919.833.8124 | www.timmons.com

YOUR VISION ACHIEVED THROUGH OURS.

REVISION DESCRIPTION	DATE

DRAWN BY  
**J. YOKLEY**

DESIGNED BY  
**P. BARBEAU**

CHECKED BY  
**P. BARBEAU**

SCALE  
**AS SHOWN**

**TIMMONS GROUP**

NORTH CAROLINA LICENSE NO. C-1652

**CIRCLE K - R&R 2720294**

CHAPEL HILL - CHATHAM COUNTY COUNTY - NORTH CAROLINA

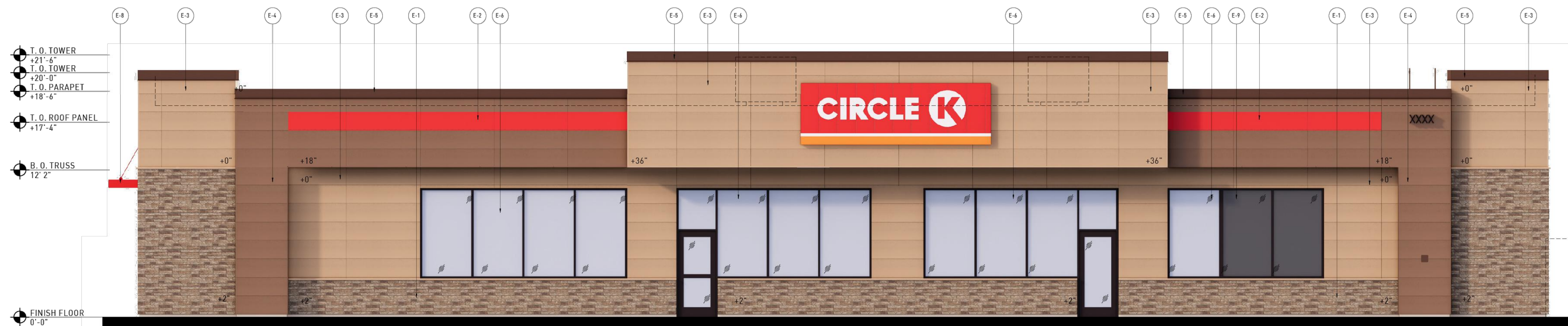
VICINITY MAP EXHIBIT

JOB NO.	37630.073
SHEET NO.	EX3.0

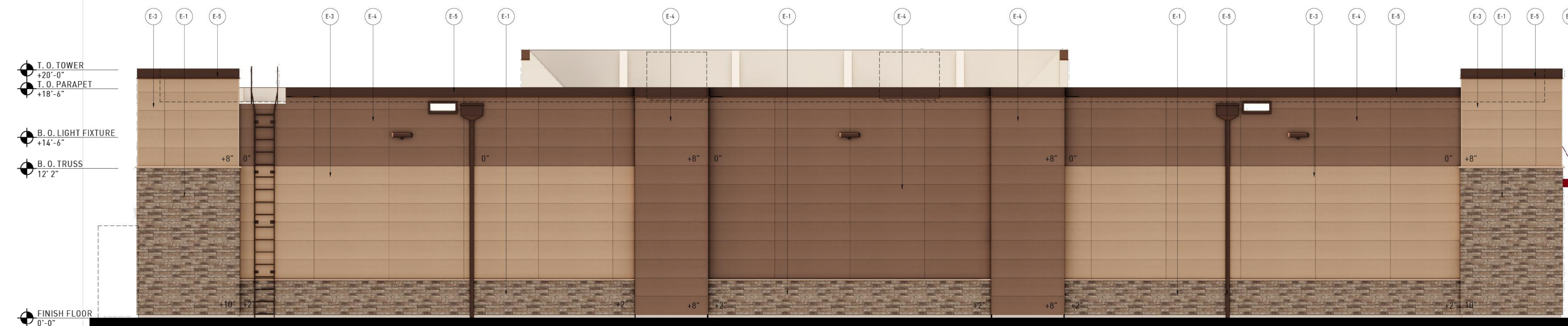
S:\32337630-073-2720294 - Chatham\CONC\DWG\Sheet\Title\AC\37630.073-VICIN-AC.dwg | Plotted on 6/20/2023 9:22 AM | by Jeff Yokley

These plans and associated documents are the exclusive property of TIMMONS GROUP and may not be reproduced in whole or in part and shall not be used for any purpose whatsoever, inclusive, but not limited to construction, bidding, and/or construction staking without the express written consent of TIMMONS GROUP.

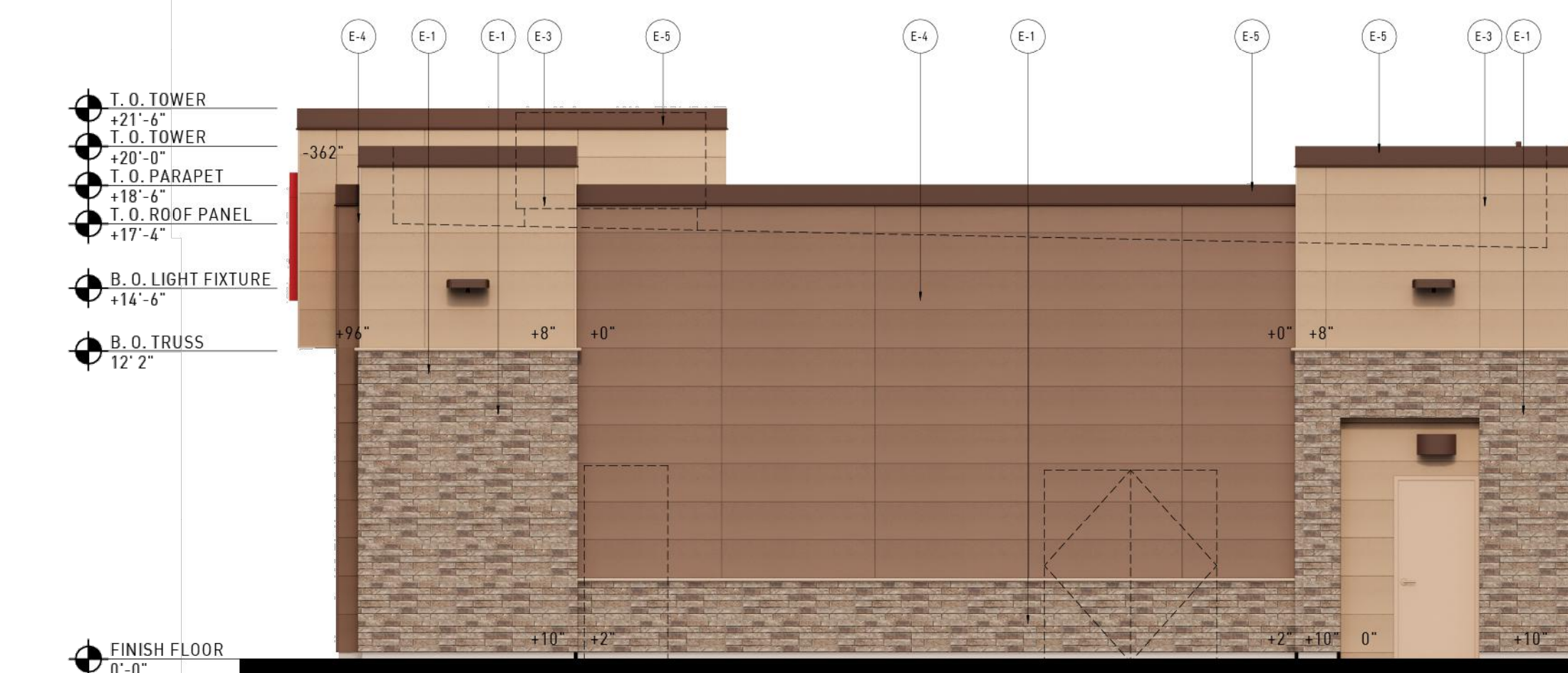




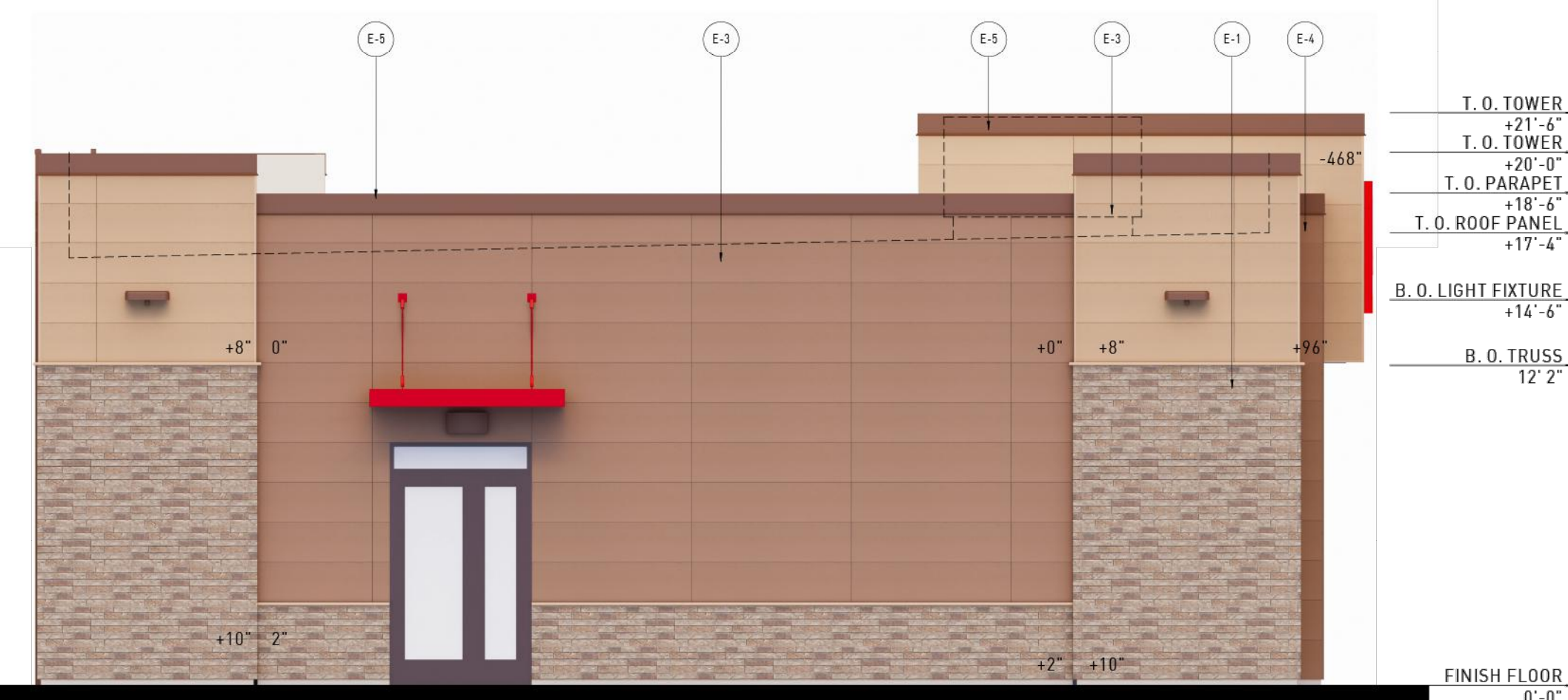
FRONT ELEVATION (EAST) | 1  
12" = 1'-0"



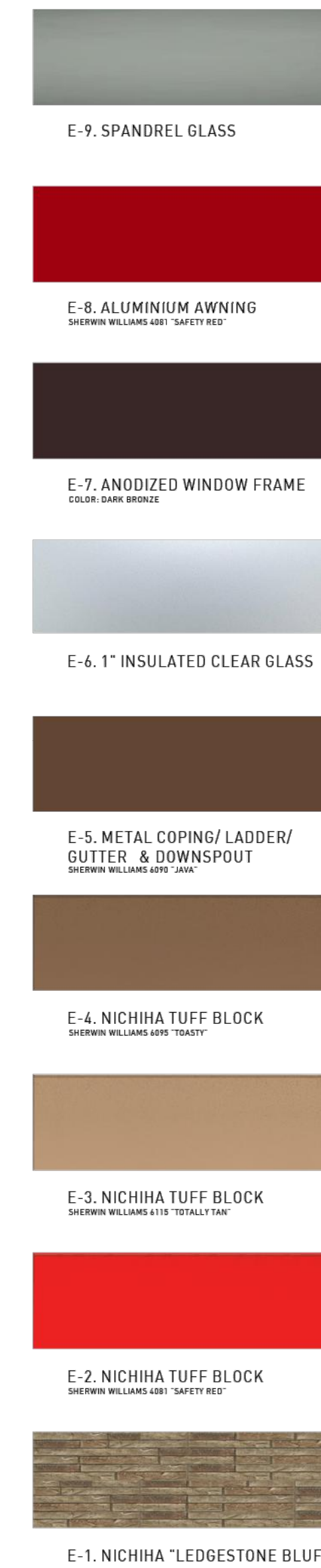
BACK ELEVATION (WEST) | 2  
12" = 1'-0"



SIDE ELEVATION (NORTH) | 3  
12" = 1'-0"



SIDE ELEVATION (SOUTH) | 4  
12" = 1'-0"



MATERIAL LEGEND  
N.T.S.

**rdc.**

11921 Freedom Drive #1110  
Reston, Va 20190  
t 703.668.0086  
rdcollaborative.com

**COPYRIGHT NOTICE**

This drawings is the property of the above referenced Professional and is not to be used for any purpose other than the specific project and site named herein, and cannot be reproduced in any manner without the express written permission from the professional.

**PROFESSIONAL SEAL**



**REVISIONS**

Δ ISSUE	DATE

**PROFESSIONAL IN CHARGE**

RW

**PROJECT MANAGER**

RM

**QUALITY CONTROL**

JS

**DRAWN BY**

YN

**PROJECT NAME**

**CIRCLE K  
STORES, INC.**

11399 US HWY 15-501 N  
CHAPEL HILL, NC  
NORTH CAROLINA 27517

PROTOCOL # R3.4.1 05/16/23



CIRCLE K STORE INC.

PROJECT NUMBER: -

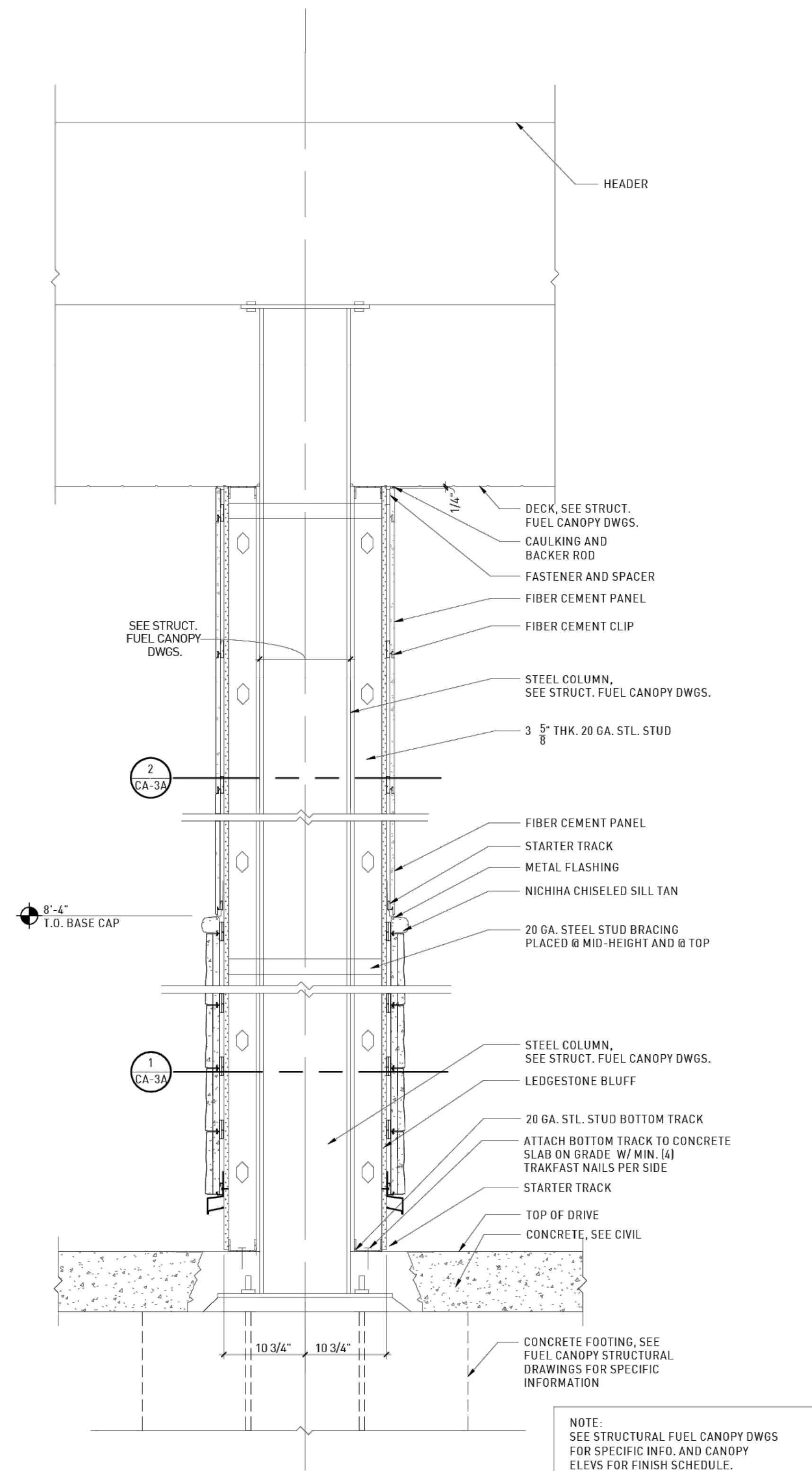
**EXTERIOR ELEVATIONS  
MATERIALS AND  
COLORS**

**A2.03**

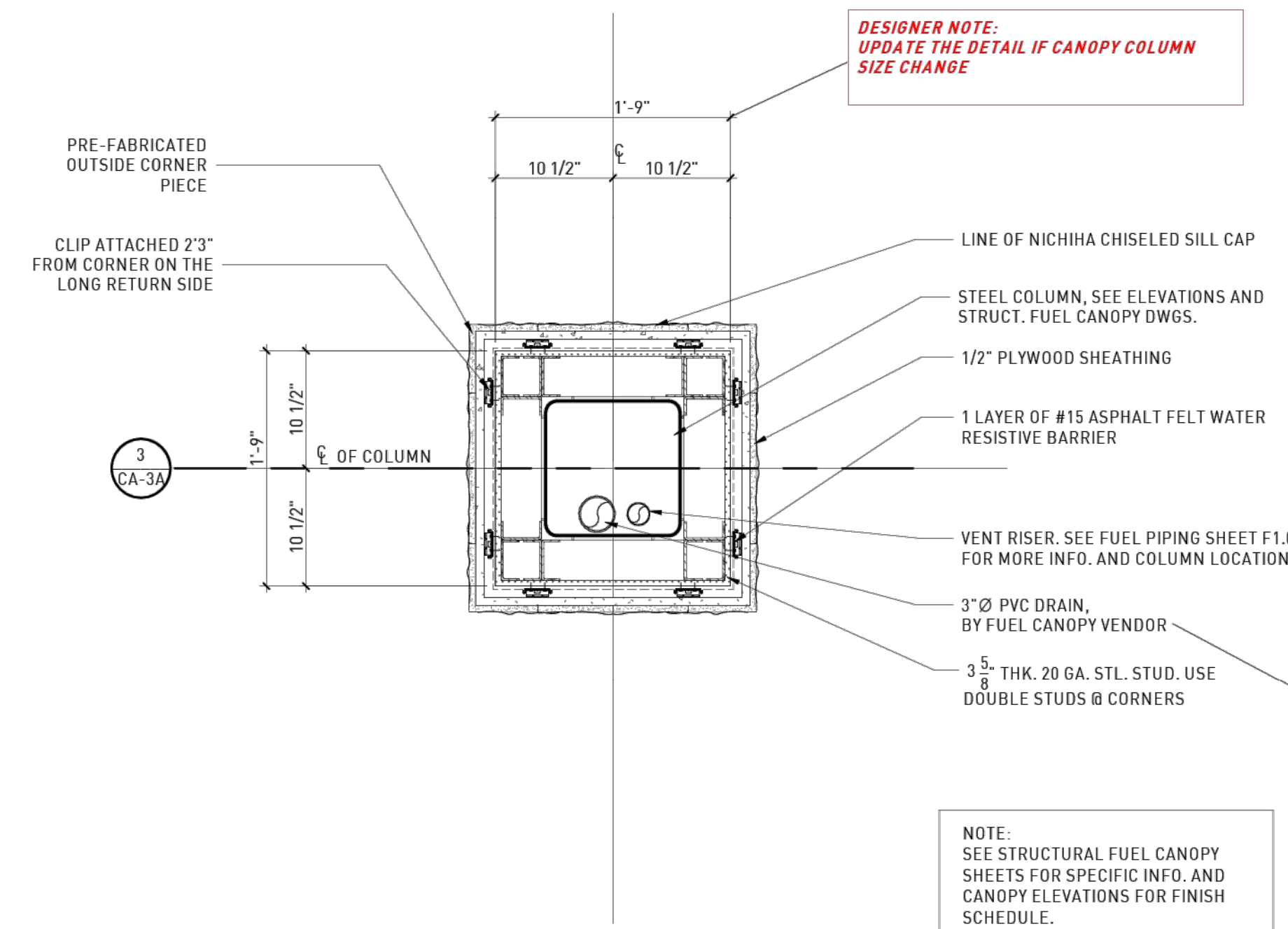
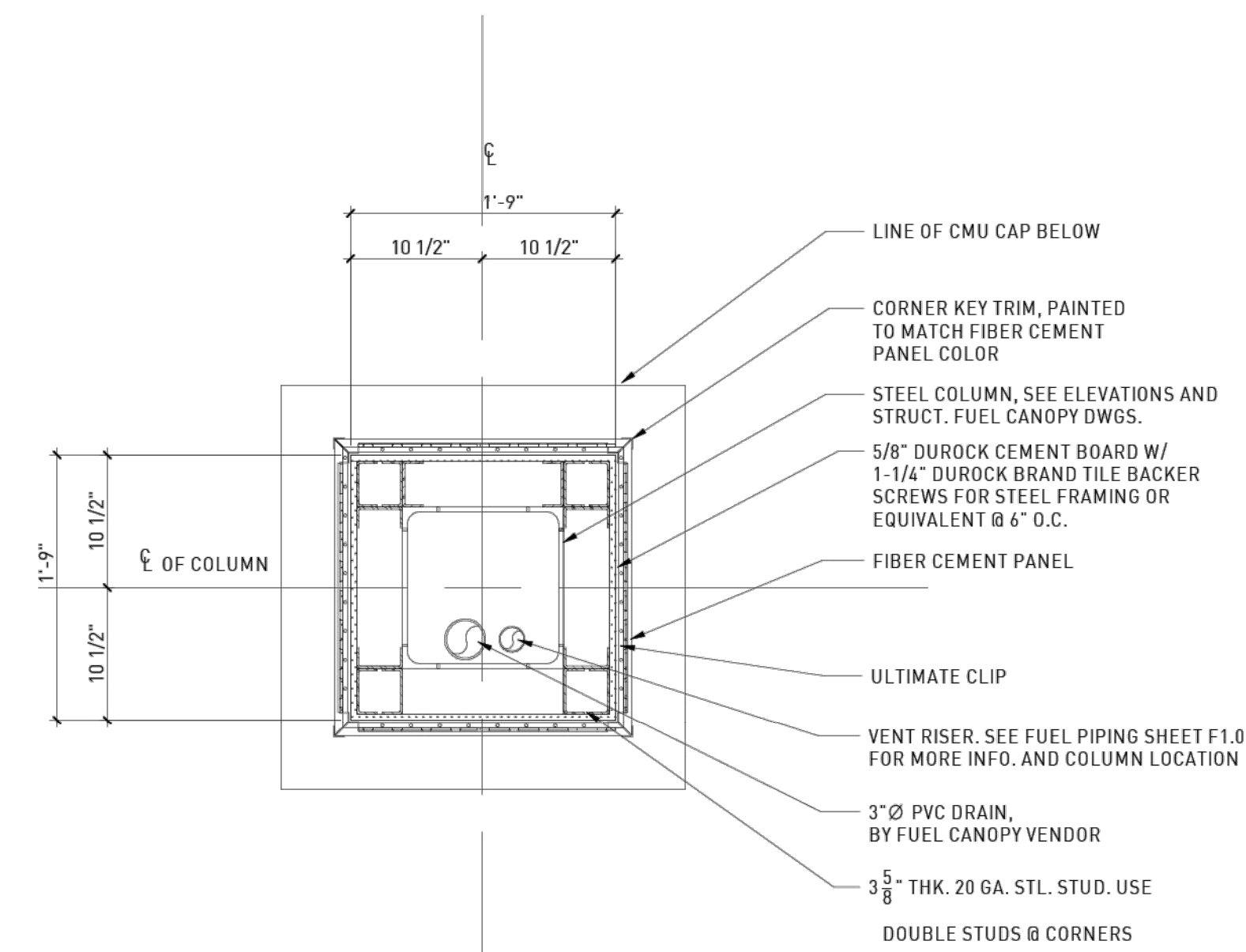


## GENERAL NOTES

1. SEE STRUCTURAL FUEL CANOPY DWGS FOR MORE INFORMATION.
2. SEE EXTERIOR CANOPY ELEVATIONS FOR FINISH.



COLUMN SECTION @ FUEL CANOPY - TYP. | 3  
1" = 1'-0"



FUEL CANOPY COLUMN PLAN - TYP. | 1  
1" = 1'-0"

## CLASS A COLUMN FINISH

**rdc.**

11921 Freedom Drive #1110  
Reston, Va 20190  
t 703.668.0086  
rdcollaborative.com

### COPYRIGHT NOTICE

This drawing is the property of the above referenced Professional and is not to be used for any purpose other than the specific project and site named herein, and cannot be reproduced in any manner without the express written permission from the professional.

### PROFESSIONAL SEAL

### REVISIONS

Δ ISSUE	DATE
	05/18/22
	06/20/22

### PROFESSIONAL IN CHARGE

XX

### PROJECT MANAGER

XX

### QUALITY CONTROL

XX

### DRAWN BY

XX

### PROJECT NAME

**CIRCLE K STORES, INC.**

11399 US HWY 15-501 N  
CHAPEL HILL, NC  
NORTH CAROLINA 27517

PROTOCOL # R3.4.1 05/16/23



CIRCLE K STORE INC.

PROJECT NUMBER: -

**FUEL CANOPY - COLUMN DETAILS**

**CA-3A**



## GENERAL NOTES

- SEE STRUCTURAL FUEL CANOPY DWGS FOR MORE INFORMATION.
- SEE EXTERIOR CANOPY ELEVATIONS FOR FINISH.

**rdc.**

11921 Freedom Drive #1110  
Reston, Va 20190  
t 703.668.0086  
rdcollaborative.com

### COPYRIGHT NOTICE

This drawings is the property of the above referenced Professional and is not to be used for any purpose other than the specific project and site named herein, and cannot be reproduced in any manner without the express written permission from the professional.

### PROFESSIONAL SEAL

### REVISIONS

△ ISSUE	DATE
	05/18/22.
	06/20/22.

### PROFESSIONAL IN CHARGE

XX

### PROJECT MANAGER

XX

### QUALITY CONTROL

XX

### DRAWN BY

XX

### PROJECT NAME

**CIRCLE K  
STORES, INC.**

11399 US HWY 15-501 N  
CHAPEL HILL, NC  
NORTH CAROLINA 27517

PROTOCOL # R3.4.1 05/16/23

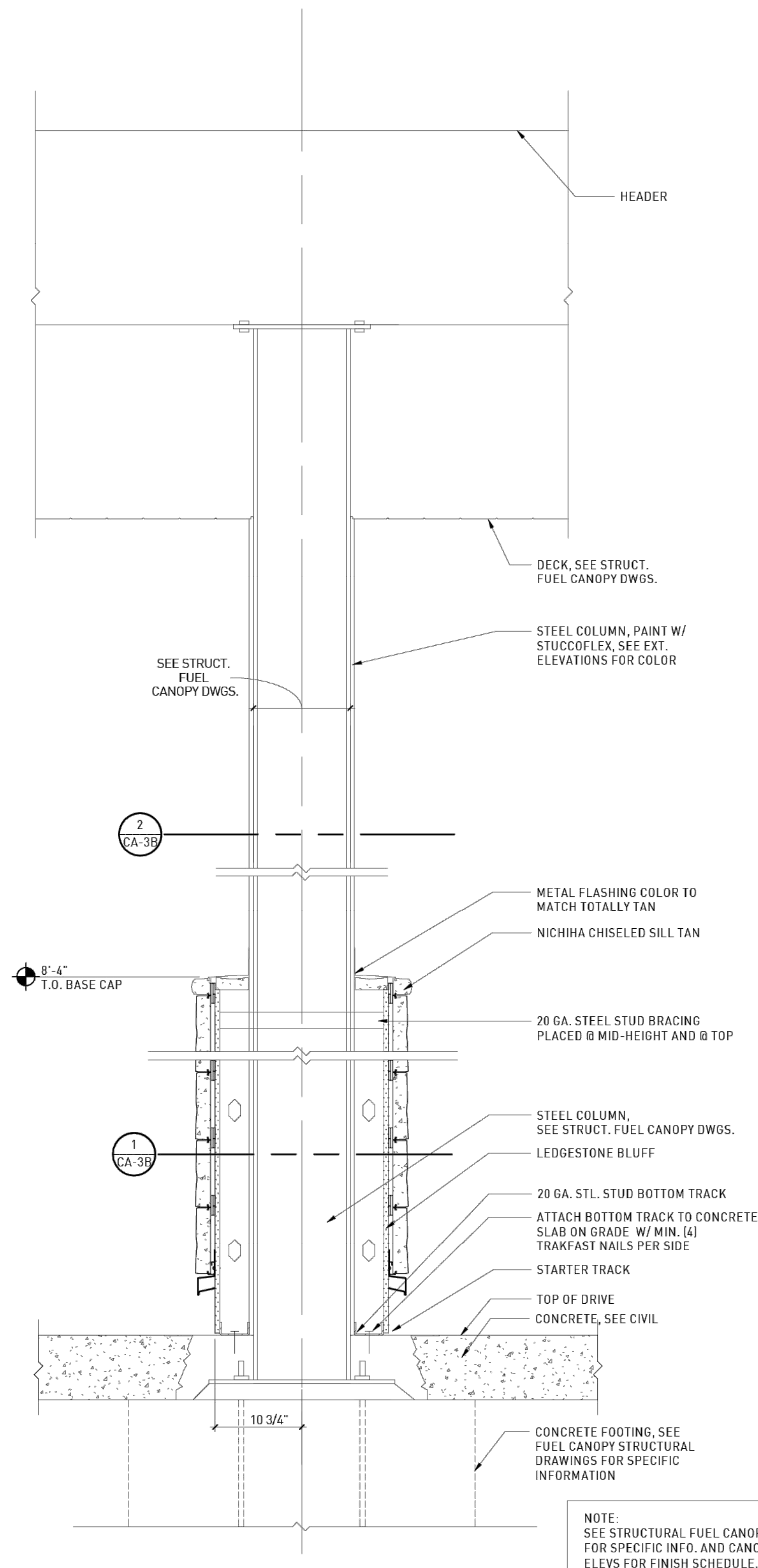


CIRCLE K STORE INC.

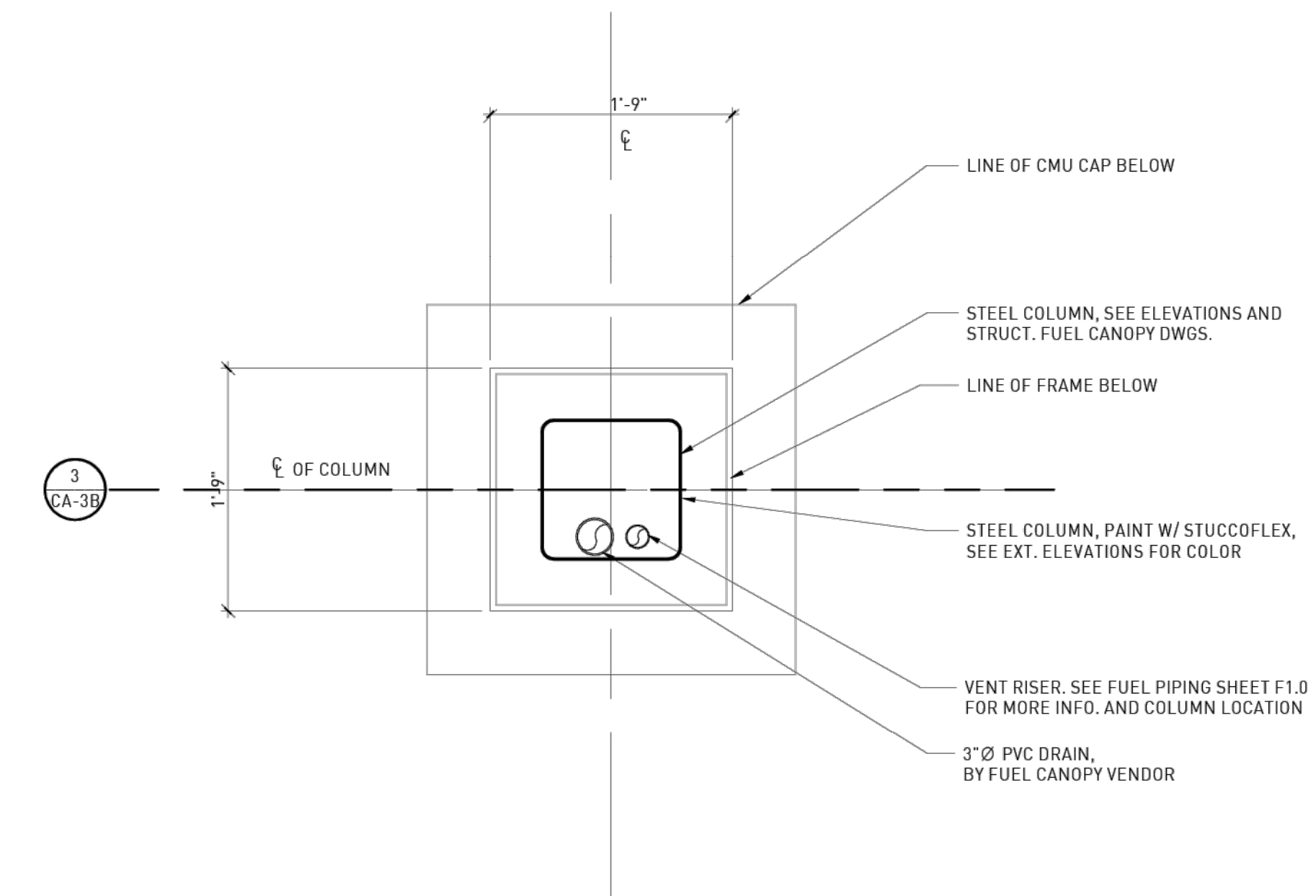
PROJECT NUMBER: -

**FUEL CANOPY -  
COLUMN DETAILS**

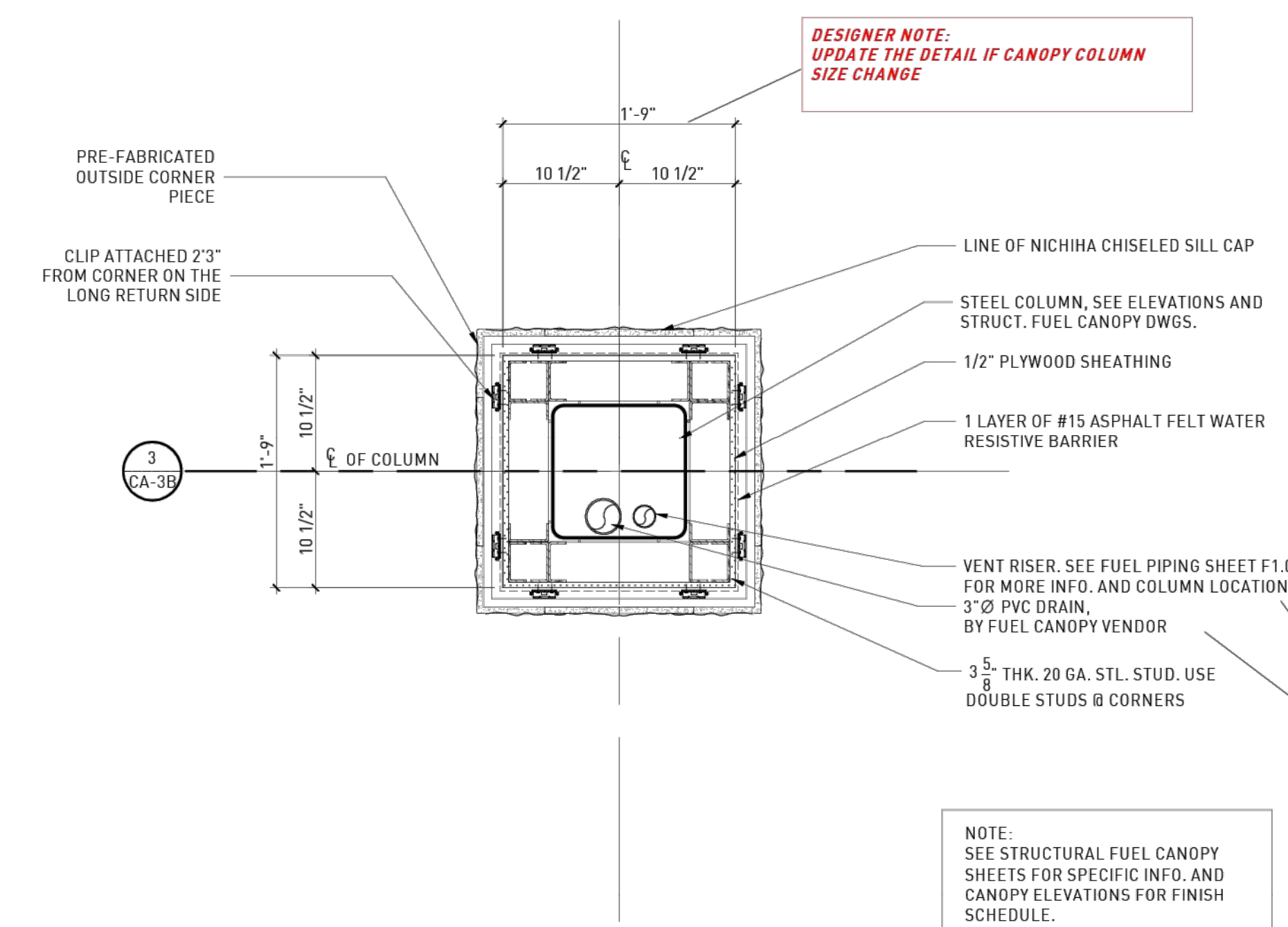
**CA-3B**



**COLUMN SECTION @ FUEL CANOPY - TYP. 3**  
1" = 1'-0"



**FUEL CANOPY COLUMN PLAN - TYP. B 2**  
1" = 1'-0"



**FUEL CANOPY COLUMN PLAN - TYP. 1**  
1" = 1'-0"

**CLASS B COLUMN FINISH**



## GENERAL NOTES

1. SEE STRUCTURAL FUEL CANOPY DWGS FOR MORE INFORMATION.
2. SEE EXTERIOR CANOPY ELEVATIONS FOR FINISH.

# rdc.

11921 Freedom Drive #1110  
Reston, Va 20190  
t 703.668.0086  
rdcollaborative.com

### COPYRIGHT NOTICE

This drawings is the property of the above referenced Professional and is not to be used for any purpose other than the specific project and site named herein, and cannot be reproduced in any manner without the express written permission from the professional

### PROFESSIONAL SEAL

### REVISIONS

△ ISSUE	DATE
	.05/18/22.
	.06/20/22.

### PROFESSIONAL IN CHARGE

XX

### PROJECT MANAGER

XX

### QUALITY CONTROL

XX

### DRAWN BY

XX

### PROJECT NAME

## CIRCLE K STORES, INC.

11399 US HWY 15-501 N  
CHAPEL HILL, NC  
NORTH CAROLINA 27517

PROTOCOL # R3.4.1 05/16/23

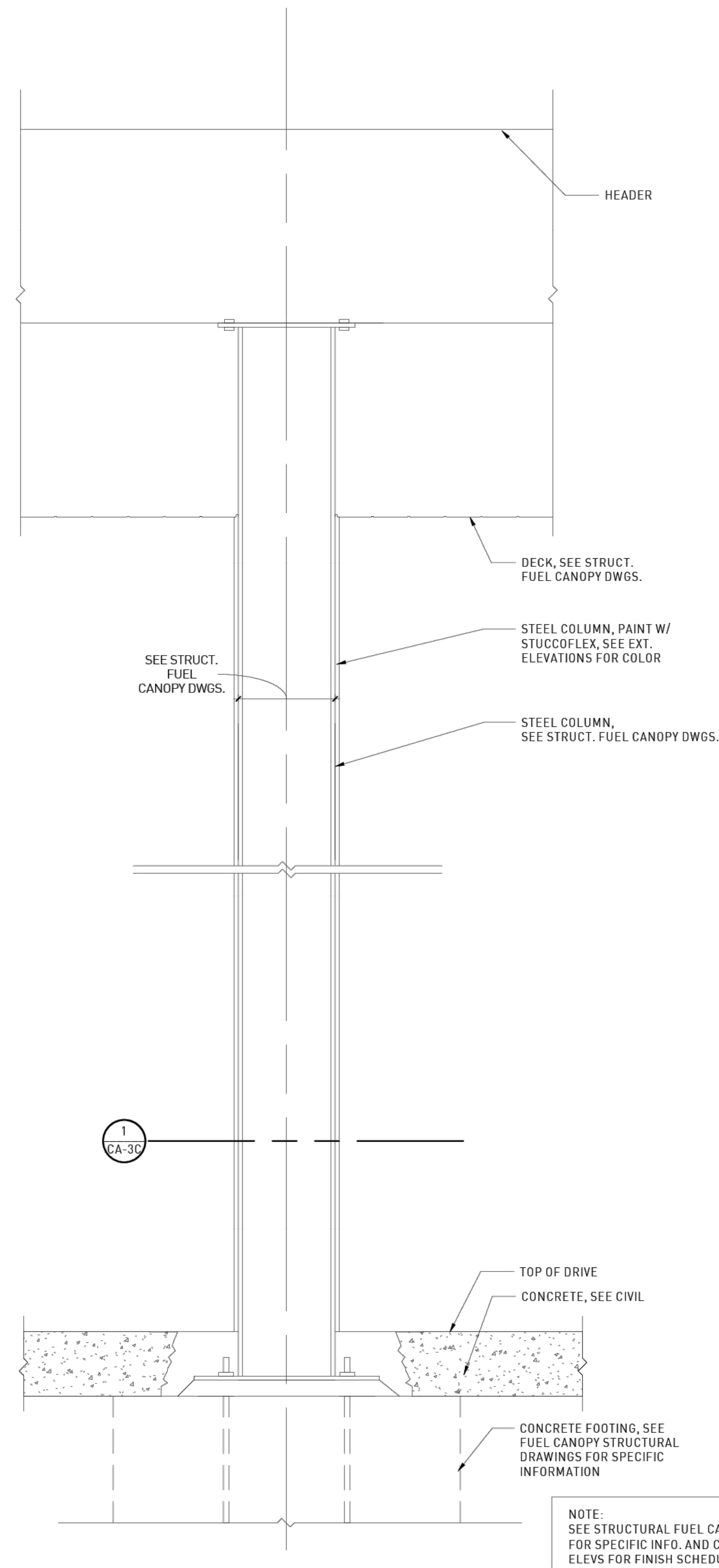


CIRCLE K STORE INC.

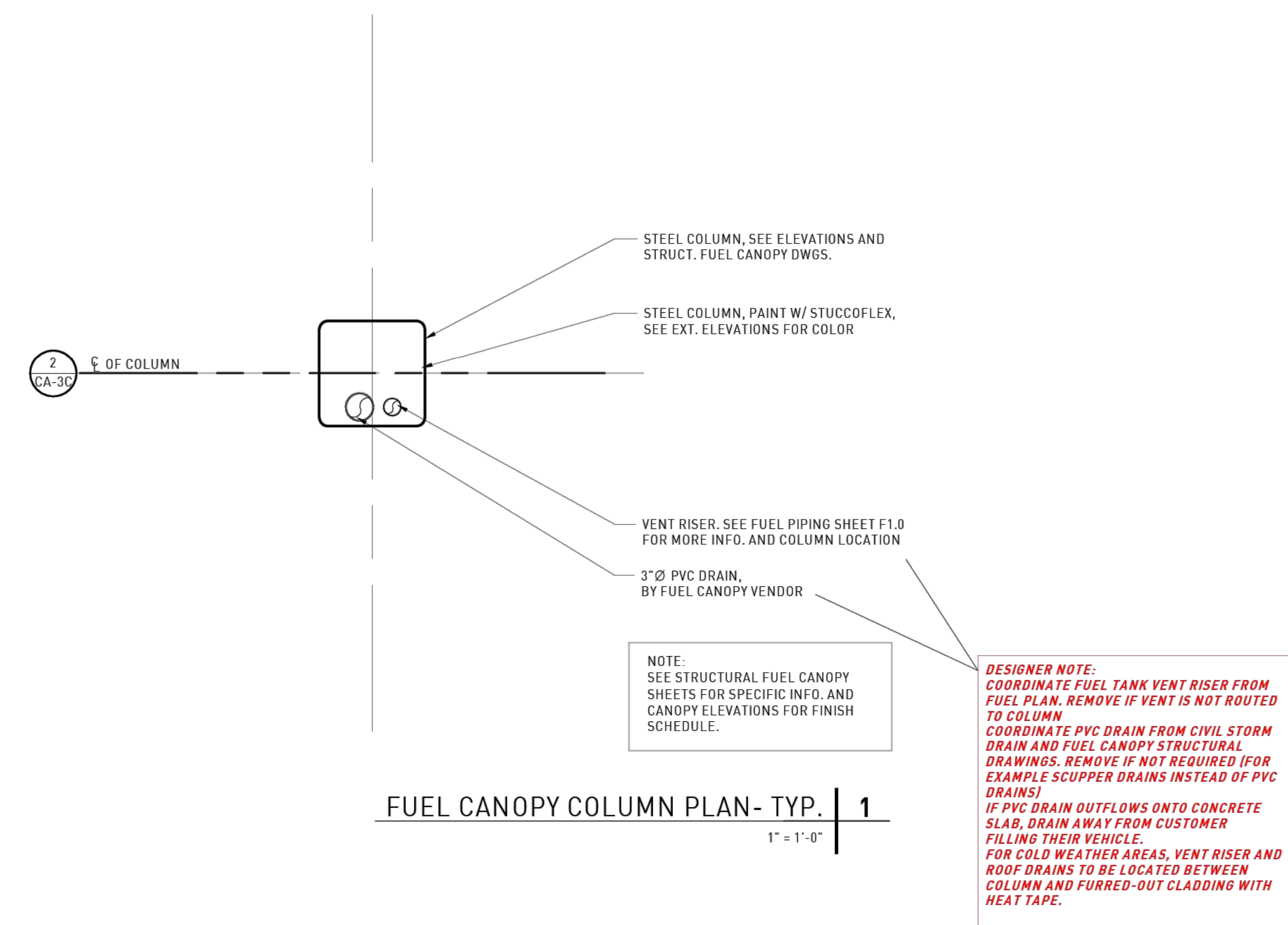
PROJECT NUMBER: -

## FUEL CANOPY - COLUMN DETAILS

CA-3C



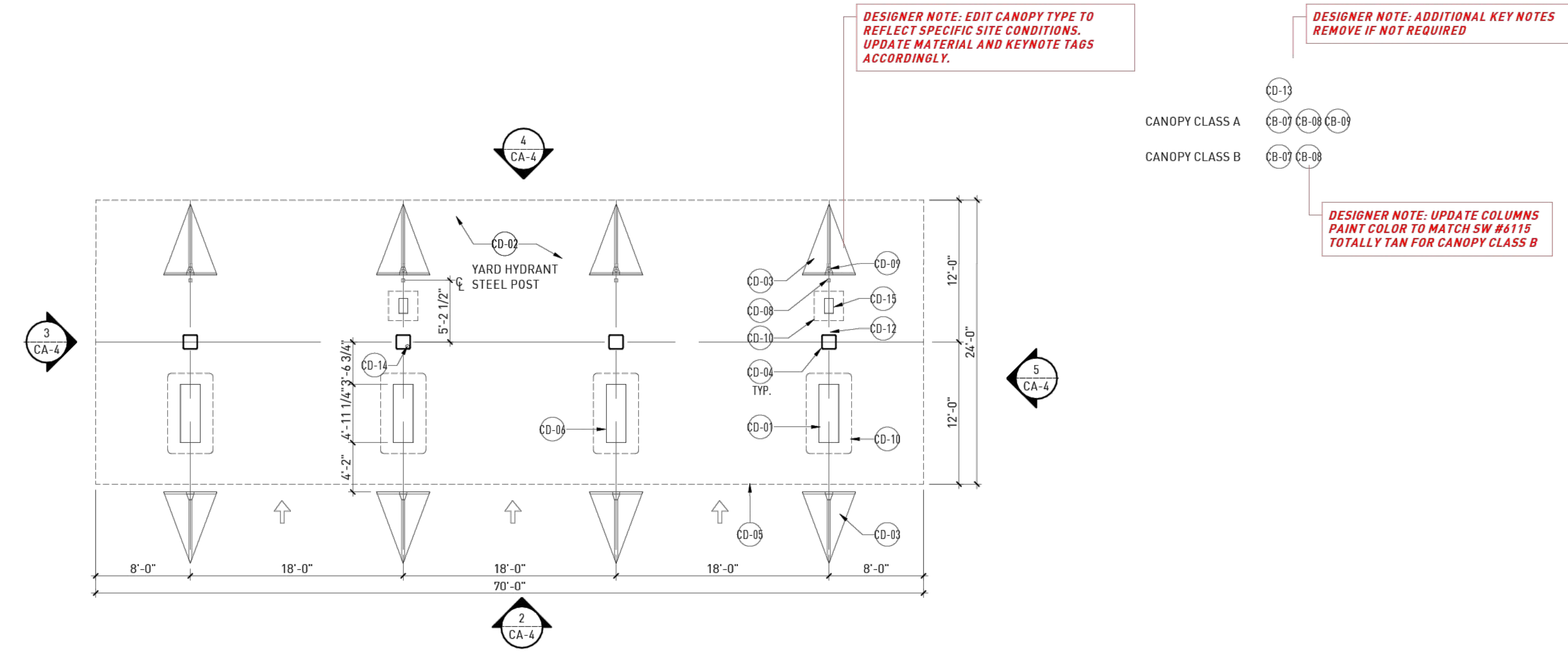
COLUMN SECTION @ FUEL CANOPY - TYP. | 2  
1" = 1'-0"



FUEL CANOPY COLUMN PLAN - TYP. | 1  
1" = 1'-0"

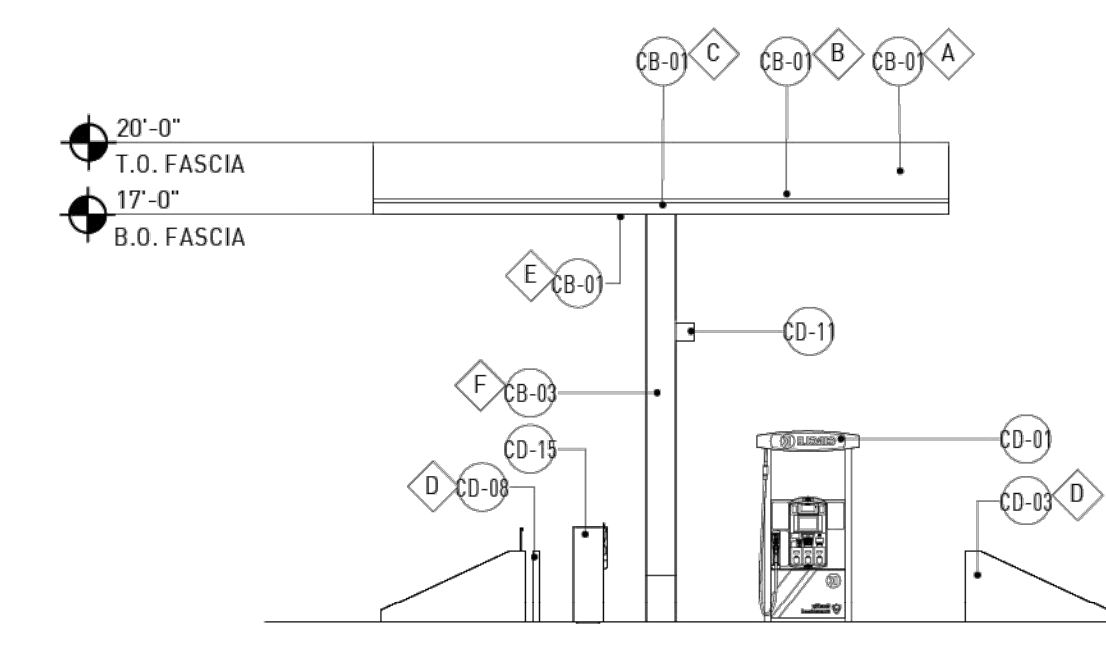
CLASS C COLUMN FINISH



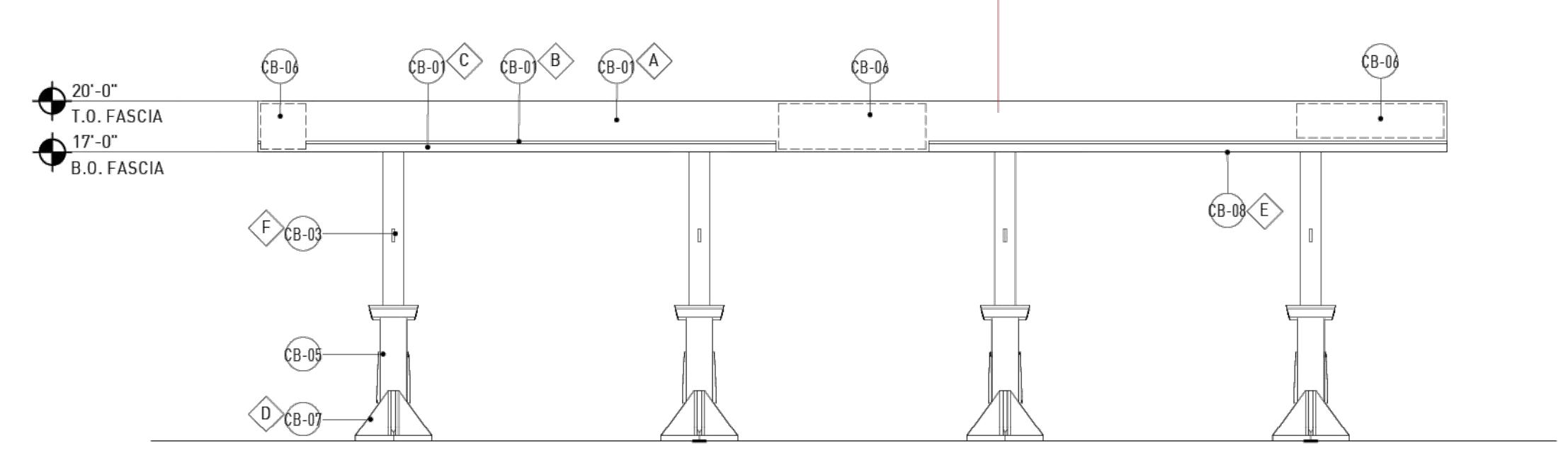


**DIESEL CANOPY PLAN | 1**  
1/8" = 1'-0"

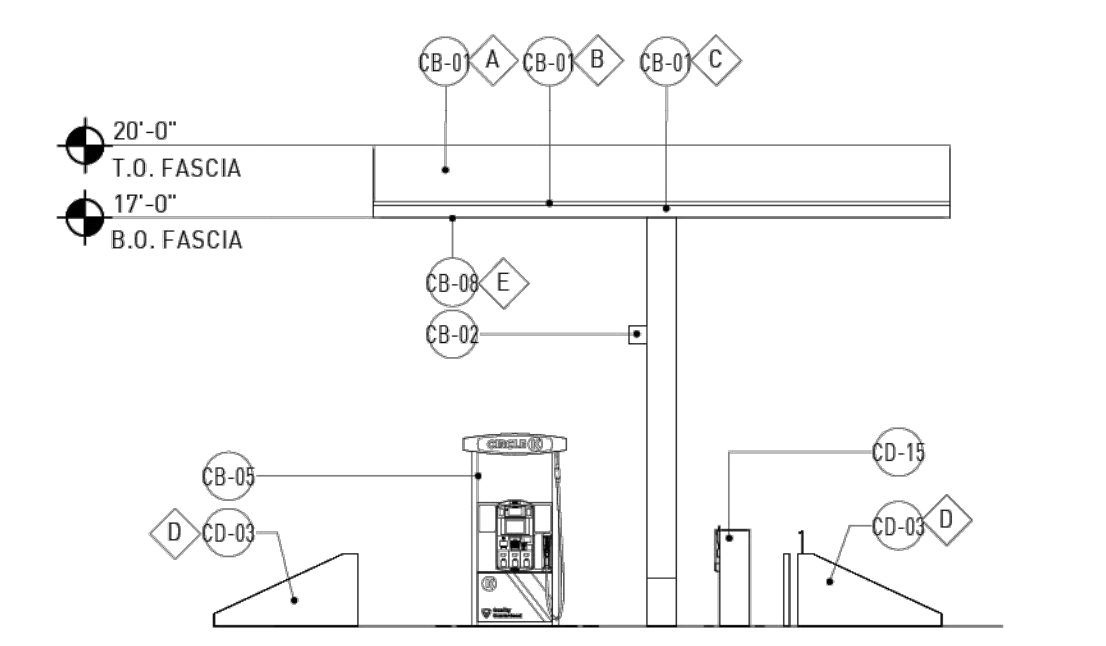
KEYNOTES X	
NUMBER	DESCRIPTION
CD-01	MASTER DISPENSER WITH DEF, SEE FUEL DRAWINGS
CD-02	CONCRETE PAVING, SEE CIVIL SHEET & STRUCT. DRAWINGS
CD-03	TRUCK ISLAND "PYRAMID" BOLLARD
CD-04	STEEL CANOPY COLUMN, SEE FUEL CANOPY STRUCTURAL DRAWINGS
CD-05	LINE OF CANOPY ABOVE
CD-06	MASTER 'SATELLITE' DEF DISPENSER, SEE FUEL DRAWINGS
CD-08	36" HIGH, 3"x3" STEEL POST FOR WATER HOSE BY GENERAL CONTRACTOR
CD-09	YARD HYDRANT - SPEC TBD BY GENERAL CONTRACTOR
CD-10	FUEL ISLANDS CONCRETE PADS WHERE REQUIRED
CD-11	PUMP NUMBER BY SIGN VENDOR
CD-12	FIRE EXTINGUISHER, NFPA 10 RATED FIRE CLASS 2A-20B-C MINIMUM, COORDINATE RATINGS AND MOUNTING LOCATIONS WITH LOCAL FIRE PREVENTION AUTHORITY AND CK PM
CD-13	VENT RISER, SEE FUEL PIPING PLANS FOR MORE INFORMATION AND COLUMN LOCATION
CD-14	3" PVC ROOF DRAIN BY FUEL CANOPY VENDOR
CD-15	AIR UNIT COMPRESSOR FOR HIGH SPEED DIESEL, REFER TO EQUIPMENT SCHEDULE AND ELECTRICAL FOR MORE INFORMATION



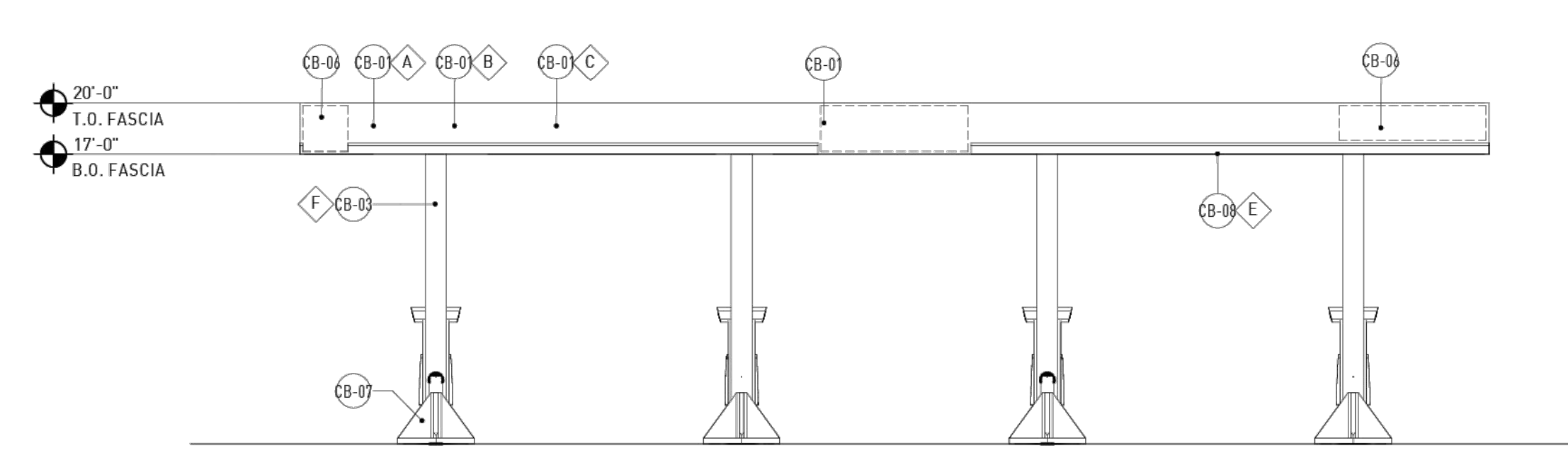
**"SIDE" ELEVATION (SOUTH) | 3**  
1/8" = 1'-0"



**FRONT ELEVATION (EAST) | 2**  
1/8" = 1'-0"



**SIDE ELEVATION (NORTH) | 5**  
1/8" = 1'-0"



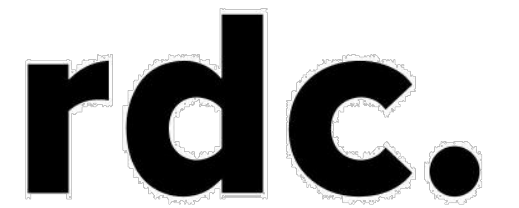
**REAR ELEVATION (WEST) | 4**  
1/8" = 1'-0"

**FINISH SCHEDULE X**

NUMBER	DESCRIPTION
CB-01	ACM PANEL "TEX-COTE"
CB-02	COLUMN FLAGS BY SIGNAGE VENDOR
CB-03	STEEL COLUMN WITH PAINT FINISH
CB-05	FUEL PUMP
CB-06	INTERNALLY ILLUMINATED SIGN UNDER SEPARATE PERMIT
CB-07	1 3/8" THK. X 6" NICHHA KURASTONE HIGH FIBER CEMENT WAINSCOT
CB-08	1-1/2" HIGH NICHHA FIBER CEMENT CAP, INSTALL PER MFR. SPECS
CB-09	NICHHA FIBER CEMENT WALL PANEL SYSTEM

- A CIRCLE K RED #PMS 485
- B CIRCLE K WHITE
- C CIRCLE K ORANGE #PMS 144
- D SHERWIN WILLIAMS - SW6236 - GRAYS HARBOR
- E PVC BOLLARD SLEEVE - DARK GRAY
- F RAL9016 SHELL WARM WHITE
- G NICHHA TUFF BLOCK - COLOR TO MATCH SW64115 - TOTALLY TAN
- H NICHHA LEDGESTONE BLUFF
- J NICHHA CHISELED SILL TAN

NOTES:  
 1. COLORS SHOWN ON THESE ELEVATIONS ARE FOR ILLUSTRATION PURPOSES ONLY. FOR ACTUAL COLORS, REFER TO MANUFACTURER'S SAMPLES.  
 2. THE FASCIA PANELS ARE PRE-FINISHED BY SIGNAGE VENDOR  
 3. ALL SIGNS REQUIRE A SEPARATE SUBMITTAL.  
 4. ALL LIGHTING ON CANOPY TO BE FLUSH MOUNTED WITH FASCIA



11921 Freedom Drive #1110  
 Reston, Va 20190  
 t 703.668.0086  
 rdcollaborative.com

**COPYRIGHT NOTICE**  
 This drawings is the property of the above referenced Professional and is not to be used for any purpose other than the specific project and site named herein, and cannot be reproduced in any manner without the express written permission from the professional

**PROFESSIONAL SEAL**

REVISIONS	
Δ ISSUE	DATE

**PROFESSIONAL IN CHARGE**  
 XX  
**PROJECT MANAGER**  
 XX  
**QUALITY CONTROL**  
 XX  
**DRAWN BY**  
 XX  
**PROJECT NAME**

**CIRCLE K STORES, INC.**

11399 US HWY 15-501 N  
 CHAPEL HILL, NC  
 NORTH CAROLINA 27517

PROTOCOL # R3.4.1 05/16/23



**CIRCLE K STORE INC.**  
**PROJECT NUMBER: -**

**DIESEL CANOPY PLANS AND ELEVATIONS**

**CA-4**