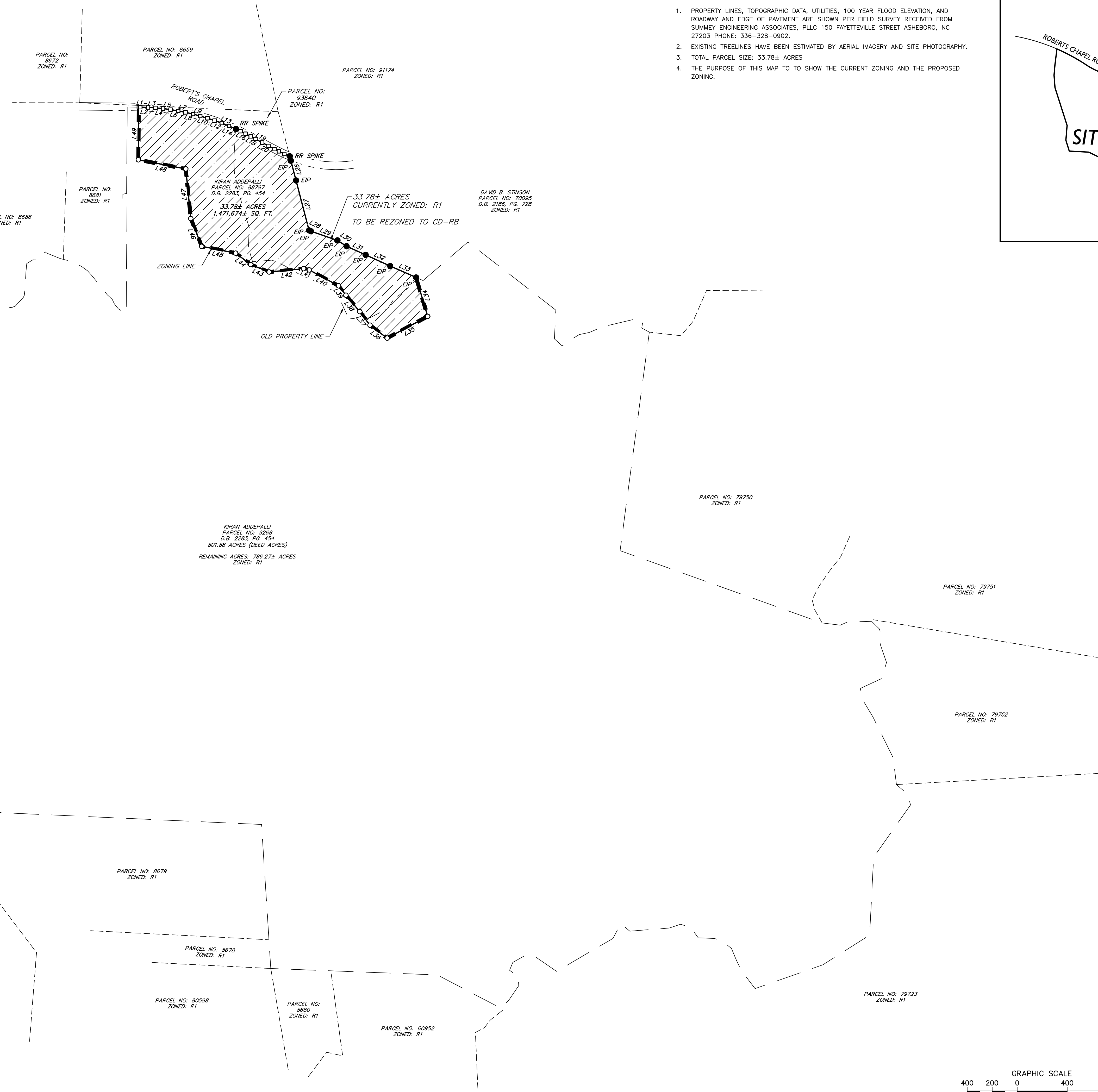
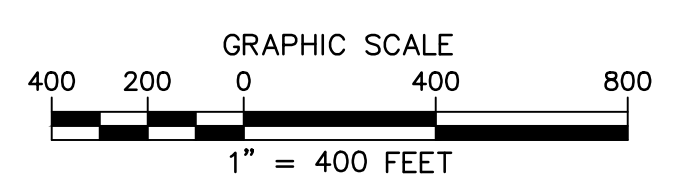
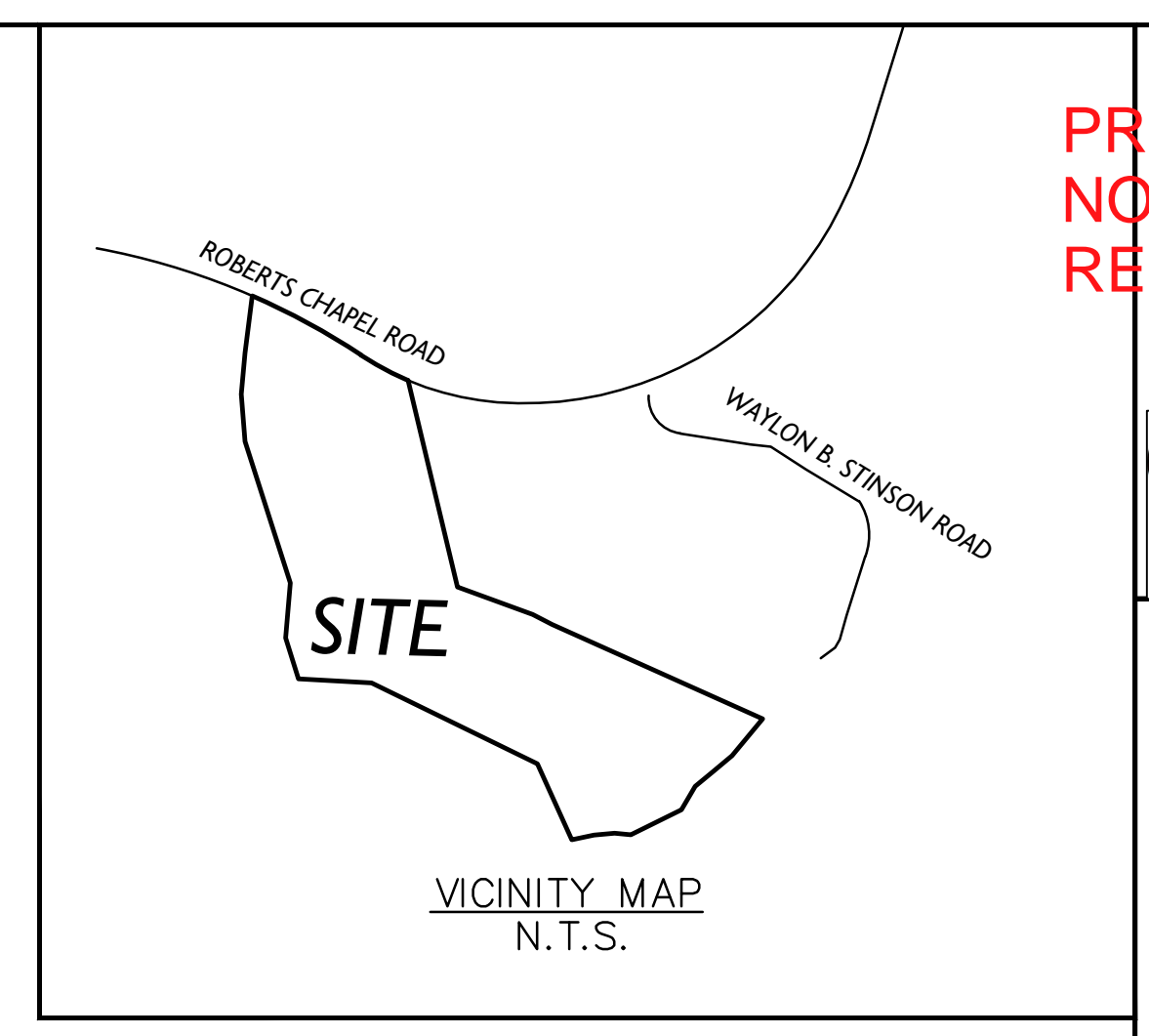


Line Table			Line Table			Line Table		
Line #	Direction	Length	Line #	Direction	Length	Line #	Direction	Length
L1	S89°13'17"E	11.61	L21	S62°29'19"E	54.26	L41	N78°27'52"W	47.20
L2	S88°16'30"E	62.20	L22	S62°44'19"E	38.67	L42	S84°36'42"W	276.67
L3	S86°21'23"E	60.23	L23	S64°25'23"E	49.24	L43	N68°03'37"W	158.84
L4	S84°37'53"E	60.28	L24	S66°51'27"E	46.62	L44	N52°46'52"W	151.56
L5	S82°30'33"E	60.71	L25	S14°18'17"E	36.95	L45	N78°40'50"W	276.63
L6	S80°35'30"E	62.04	L26	S14°39'38"E	163.27	L46	N21°24'30"W	239.01
L7	S78°37'10"E	60.22	L27	S14°34'40"E	412.66	L47	N05°48'44"W	398.90
L8	S76°51'24"E	61.16	L28	S66°05'08"E	15.58	L48	N79°06'53"W	386.09
L9	S74°39'24"E	60.23	L29	S70°50'56"E	225.20	L49	N00°27'27"E	421.13
L10	S73°33'00"E	60.04	L30	S57°39'12"E	86.40			
L11	S71°56'35"E	60.44	L31	S65°32'14"E	167.48			
L12	S70°17'06"E	60.40	L32	S65°30'32"E	216.40			
L13	S68°28'41"E	62.20	L33	S66°15'58"E	225.59			
L14	S66°38'11"E	60.33	L34	S16°39'54"E	325.29			
L15	S64°12'17"E	42.47	L35	S61°45'33"W	368.15			
L16	S62°41'42"E	43.39	L36	N53°00'25"W	172.10			
L17	S62°32'59"E	46.43	L37	N36°42'42"W	135.49			
L18	S61°36'48"E	43.64	L38	N40°22'42"W	172.04			
L19	S61°58'11"E	60.52	L39	N38°02'07"W	95.88			
L20	S62°02'30"E	57.71	L40	N61°27'58"W	265.68			



- NOTES:
- PROPERTY LINES, TOPOGRAPHIC DATA, UTILITIES, 100 YEAR FLOOD ELEVATION, AND ROADWAY AND EDGE OF PAVEMENT ARE SHOWN PER FIELD SURVEY RECEIVED FROM SUMMEY ENGINEERING ASSOCIATES, PLLC 150 FAYETTEVILLE STREET ASHEBORO, NC 27203 PHONE: 336-328-0902.
  - EXISTING TREELINES HAVE BEEN ESTIMATED BY AERIAL IMAGERY AND SITE PHOTOGRAPHY.
  - TOTAL PARCEL SIZE: 33.78± ACRES
  - THE PURPOSE OF THIS MAP IS TO SHOW THE CURRENT ZONING AND THE PROPOSED ZONING.



PRELIMINARY  
NOT FOR  
RECORDATION



Summey Engineering Associates, PLLC  
 Engineering - Consulting - Surveying  
 PO Box 968  
 Asheboro, NC 27204  
 Phone: 336-328-0902 Fax: 336-328-0922  
 E-mail: info@summeyengineering.com  
 N.C. Professional Engineering Firm License No. F-09316

By:	
Description:	
Date:	
No.:	

PROPOSED ZONING MAP  
**GOLDSTONS SPORTS**  
 ROBERTS CHAPEL ROAD  
 CHATHAM COUNTY - GOLDSTON - NORTH CAROLINA

Scale:	AS NOTED
Date:	JANUARY 2025
Drawn By:	SKM
Checked By:	HM5J
Job No.:	E-8171

Sheet No. **C-3**

