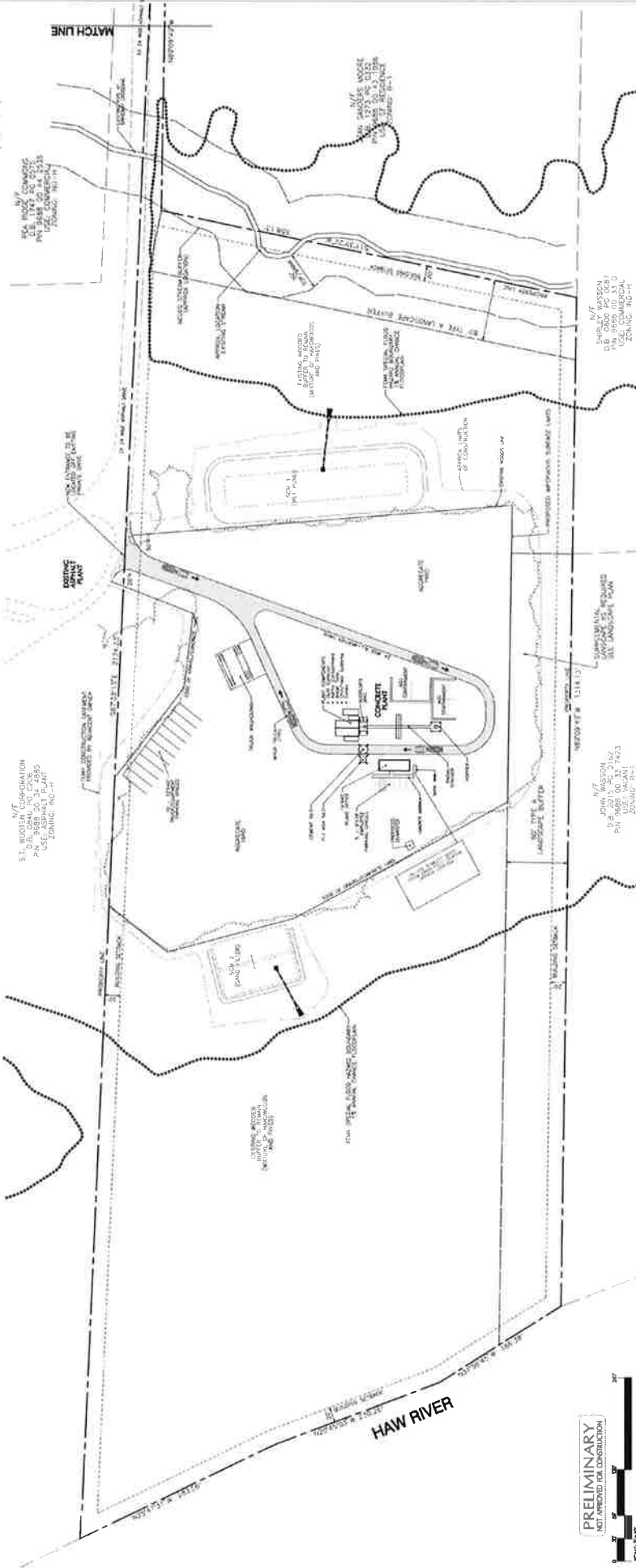


CRITICAL NOTES:

1. EXISTING SURVEY INFORMATION PROVIDED BY CATHLAMET COUNTY GIS INFORMATION.
2. EXISTING SURVEY INFORMATION PROVIDED BY CATHLAMET COUNTY GIS INFORMATION.
3. EXISTING SURVEY INFORMATION PROVIDED BY CATHLAMET COUNTY GIS INFORMATION.
4. EXISTING SURVEY INFORMATION PROVIDED BY CATHLAMET COUNTY GIS INFORMATION.
5. EXISTING SURVEY INFORMATION PROVIDED BY CATHLAMET COUNTY GIS INFORMATION.
6. EXISTING SURVEY INFORMATION PROVIDED BY CATHLAMET COUNTY GIS INFORMATION.
7. EXISTING SURVEY INFORMATION PROVIDED BY CATHLAMET COUNTY GIS INFORMATION.
8. EXISTING SURVEY INFORMATION PROVIDED BY CATHLAMET COUNTY GIS INFORMATION.
9. EXISTING SURVEY INFORMATION PROVIDED BY CATHLAMET COUNTY GIS INFORMATION.
10. EXISTING SURVEY INFORMATION PROVIDED BY CATHLAMET COUNTY GIS INFORMATION.



CONCEPTUAL CONCRETE BATCH PLANT ELEVATIONS



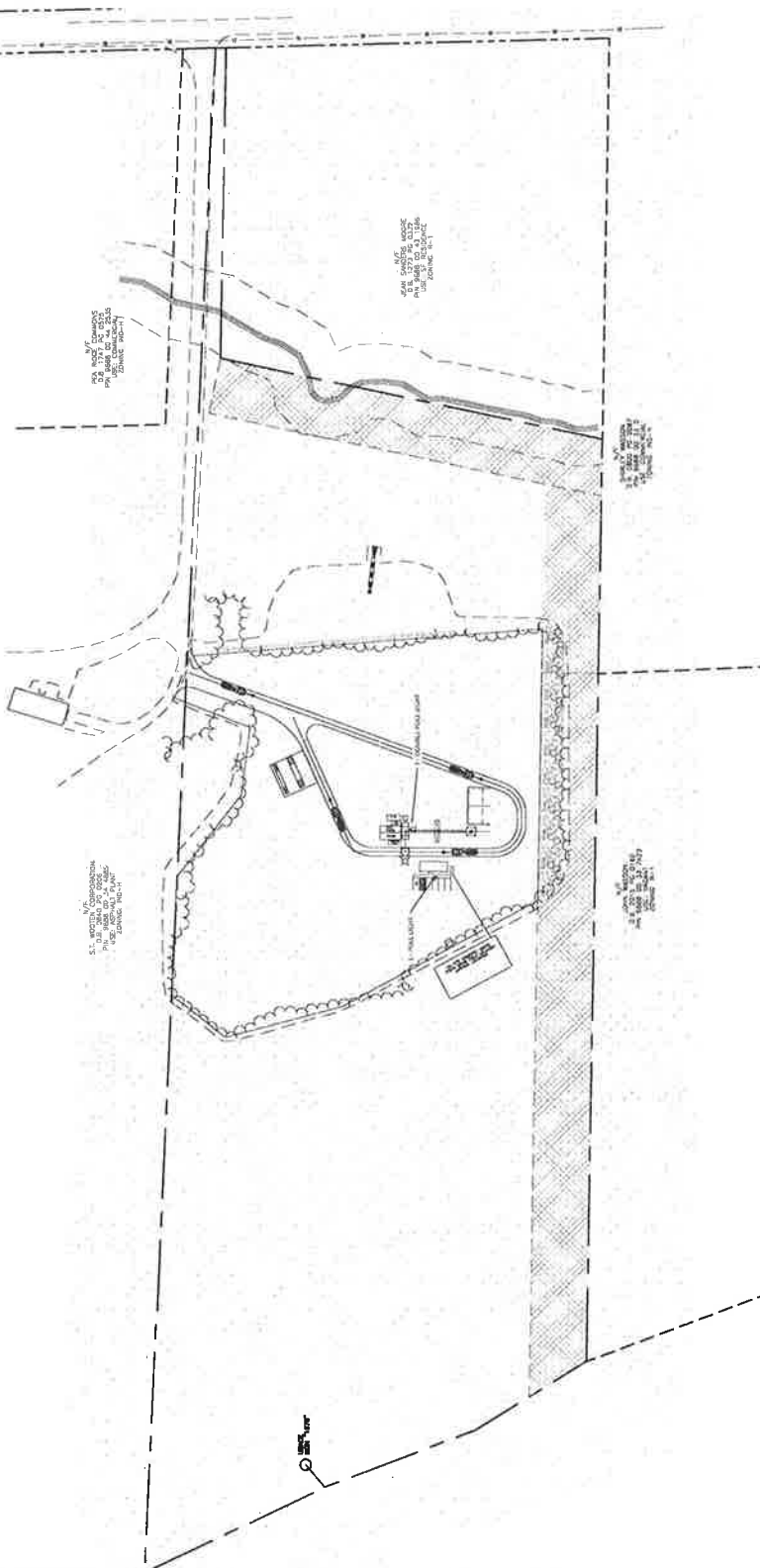
PRELIMINARY
NOT FOR CONSTRUCTION



<p>S.T. WOOTEN CORPORATION Pea Ridge Concrete Batch Plant</p>		<p>North Carolina</p>	
<p>CATHLAMET COUNTY</p>		<p>Preliminary Site Plan</p>	
<p>WithersRavenel Engineers Planners Surveyors</p>		<p>C1.1</p>	



ALL PROPOSED LIGHT FIXTURES SHALL BE FULL CUTOFF FIXTURES



PFAS - PowerForm
 8-18 A-100

PFAS - PowerForm
 5-18 A-100

PFAS - PowerForm
 10-18 A-100

PFAS - PowerForm
 12-18 A-100

PFAS - PowerForm
 14-18 A-100

PFAS - PowerForm
 16-18 A-100

PFAS - PowerForm
 18-18 A-100

PFAS - PowerForm
 20-18 A-100

PFAS - PowerForm
 22-18 A-100

PFAS - PowerForm
 24-18 A-100

PFAS - PowerForm
 26-18 A-100

PFAS - PowerForm
 28-18 A-100

PFAS - PowerForm
 30-18 A-100

PFAS - PowerForm
 32-18 A-100

PFAS - PowerForm
 34-18 A-100

PFAS - PowerForm
 36-18 A-100

PFAS - PowerForm
 38-18 A-100

PFAS - PowerForm
 40-18 A-100

PFAS - PowerForm
 42-18 A-100

PFAS - PowerForm
 44-18 A-100

PFAS - PowerForm
 46-18 A-100

PFAS - PowerForm
 48-18 A-100

PFAS - PowerForm
 50-18 A-100

PFAS - PowerForm
 52-18 A-100

PFAS - PowerForm
 54-18 A-100

PFAS - PowerForm
 56-18 A-100

PFAS - PowerForm
 58-18 A-100

PFAS - PowerForm
 60-18 A-100

PFAS - PowerForm
 62-18 A-100

PFAS - PowerForm
 64-18 A-100

PFAS - PowerForm
 66-18 A-100

PFAS - PowerForm
 68-18 A-100

PFAS - PowerForm
 70-18 A-100

PFAS - PowerForm
 72-18 A-100

PFAS - PowerForm
 74-18 A-100

PFAS - PowerForm
 76-18 A-100

PFAS - PowerForm
 78-18 A-100

PFAS - PowerForm
 80-18 A-100

PFAS - PowerForm
 82-18 A-100

PFAS - PowerForm
 84-18 A-100

PFAS - PowerForm
 86-18 A-100

PFAS - PowerForm
 88-18 A-100

PFAS - PowerForm
 90-18 A-100

PFAS - PowerForm
 92-18 A-100

PFAS - PowerForm
 94-18 A-100

PFAS - PowerForm
 96-18 A-100

PFAS - PowerForm
 98-18 A-100

PFAS - PowerForm
 100-18 A-100

Chatham County, NC Parcel Information

Area of Interest (AOI) Information

Area : 21.7 acres

Oct 6 2022 14:06:28 Eastern Daylight Time

