

REVISION	DESCRIPTION	DATE

SEAL

**PRELIMINARY PLAN**

FOR REVIEW PURPOSES ONLY

SEAL

**PRELIMINARY PLAN**

FOR REVIEW PURPOSES ONLY

**MCKIM & CREED**

1730 Varsity Drive, Suite 500  
Raleigh, North Carolina 27606  
Phone: (919)233-8091, Fax: (919)233-8031  
F-1222

www.mckimcreed.com

**WILSON | BLOUNT DEVELOPMENT**

**BRIAR CHAPEL FITNESS FACILITY  
PRELIMINARY PLAN**

**EXISTING CONDITIONS  
AND DEMOLITION PLAN**

DATE: SEPTEMBER 20, 2022

MCE PROJ. # 09072-0001

DRAWN: JFS

DESIGNED: KLT

CHECKED: KLT

PROJ. MGR: CHS

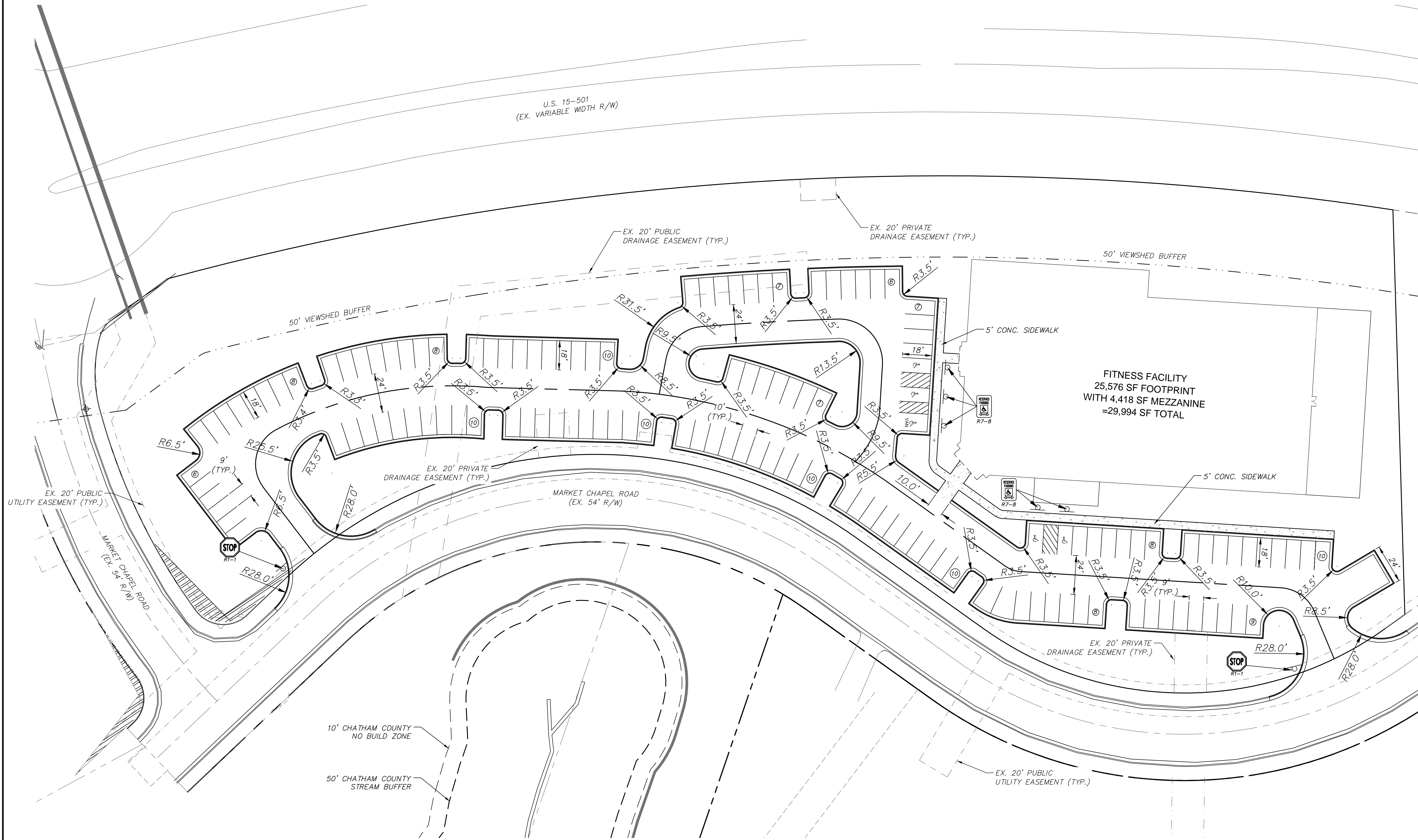
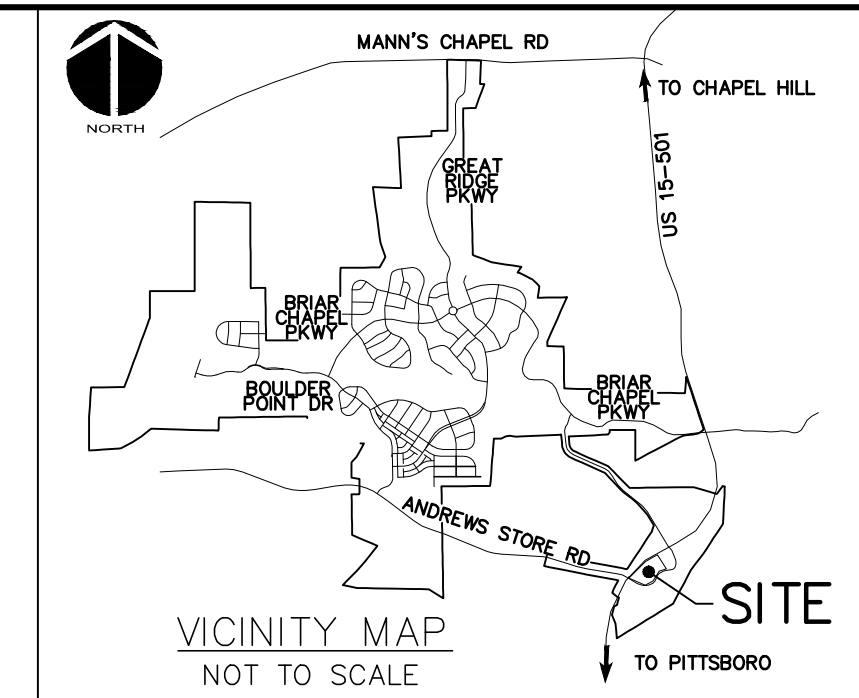
SCALE  
HORIZONTAL: 1"=30'  
VERTICAL: N/A

MAC FILE NUMBER  
2022-EX-CONDITIONS PLAN  
DRAWING NUMBER  
**C2.0**

STATUS: **PRELIMINARY DRAWINGS**  
FOR REVIEW PURPOSES ONLY

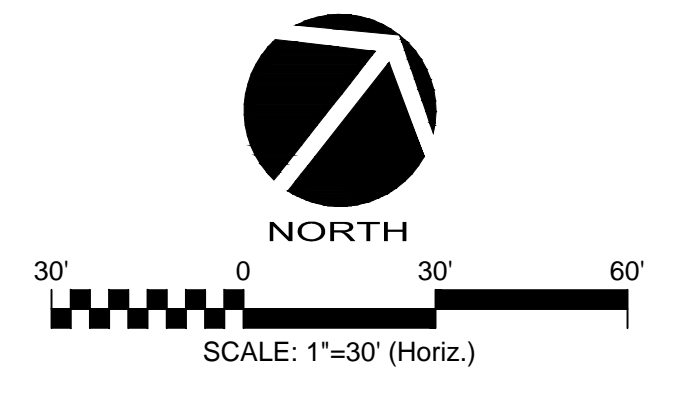
REVISION  
**0**





**SITE DATA:**

AKPAR NUMBER(S):	93102/93204
TOTAL SITE AREA:	4.09 AC
BUILDING AREA:	29994 SF (WITH MEZZANINE)
PARKING REQUIRED:	1 SPACE PER 25 MEMBERSHIPS
PARKING PROVIDED:	134 SPACES
ADA SPACES REQUIRED:	5 SPACES (1 VAN ACCESSIBLE)
ADA SPACES PROVIDED:	5 SPACES (1 VAN ACCESSIBLE)



REVNO.	DESCRIPTIONS	DATE

SEAL  
PRELIMINARY PLAN  
FOR REVIEW PURPOSES ONLY

SEAL  
PRELIMINARY PLAN  
FOR REVIEW PURPOSES ONLY

1730 Varsity Drive, Suite 500  
Raleigh, North Carolina 27606  
Phone: (919)233-8091, Fax: (919)233-8031  
F-1222  
www.mckimcreed.com

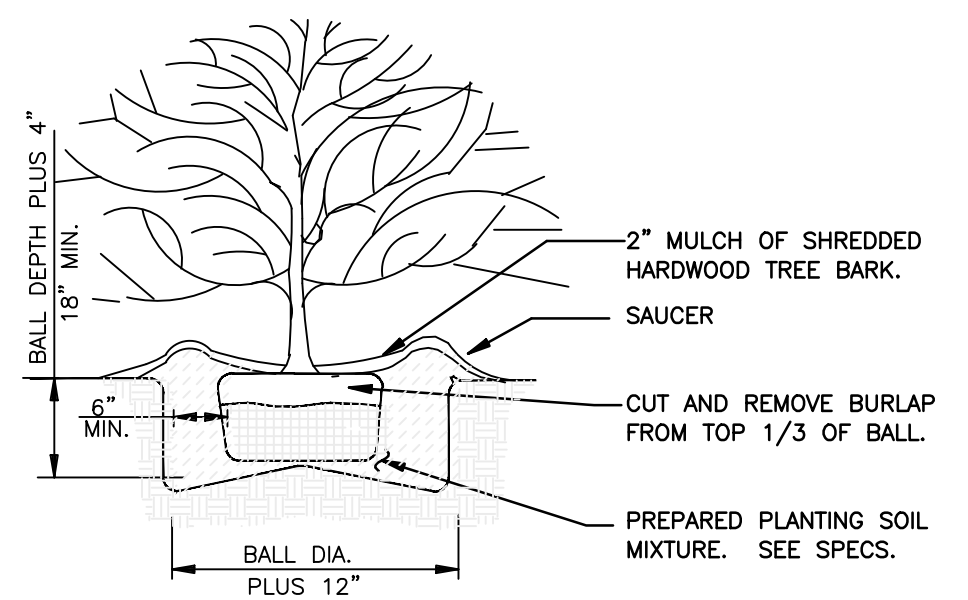
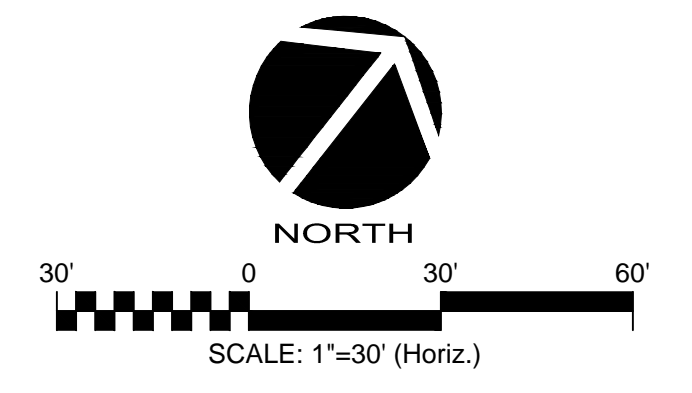
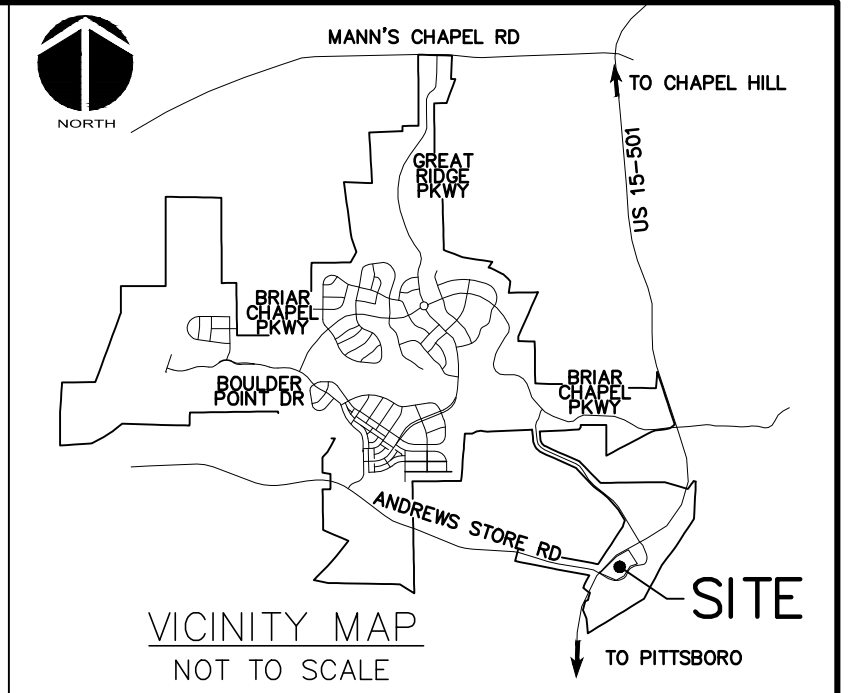
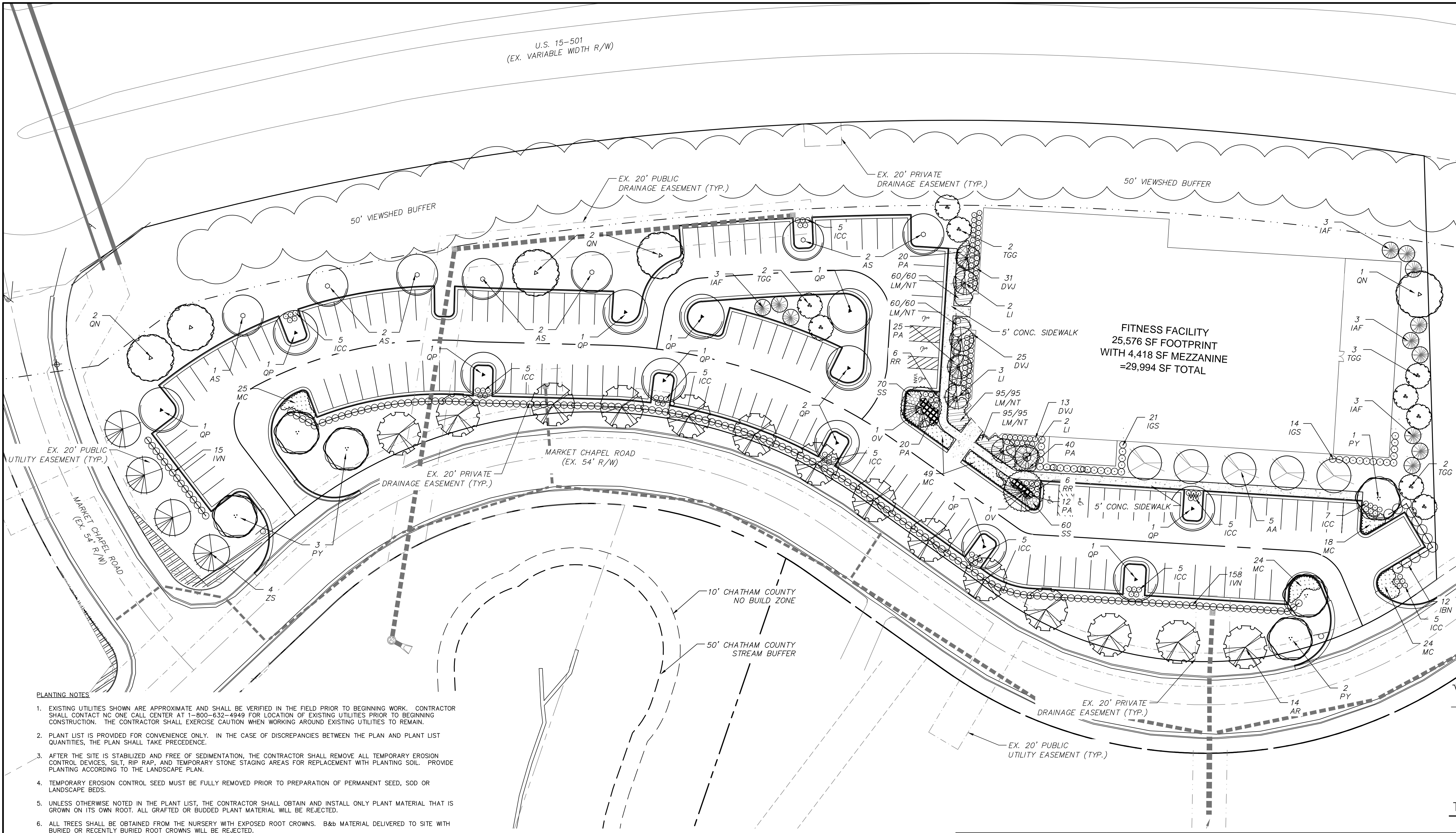
BRIAR CHAPEL FITNESS FACILITY  
PRELIMINARY PLAN

---

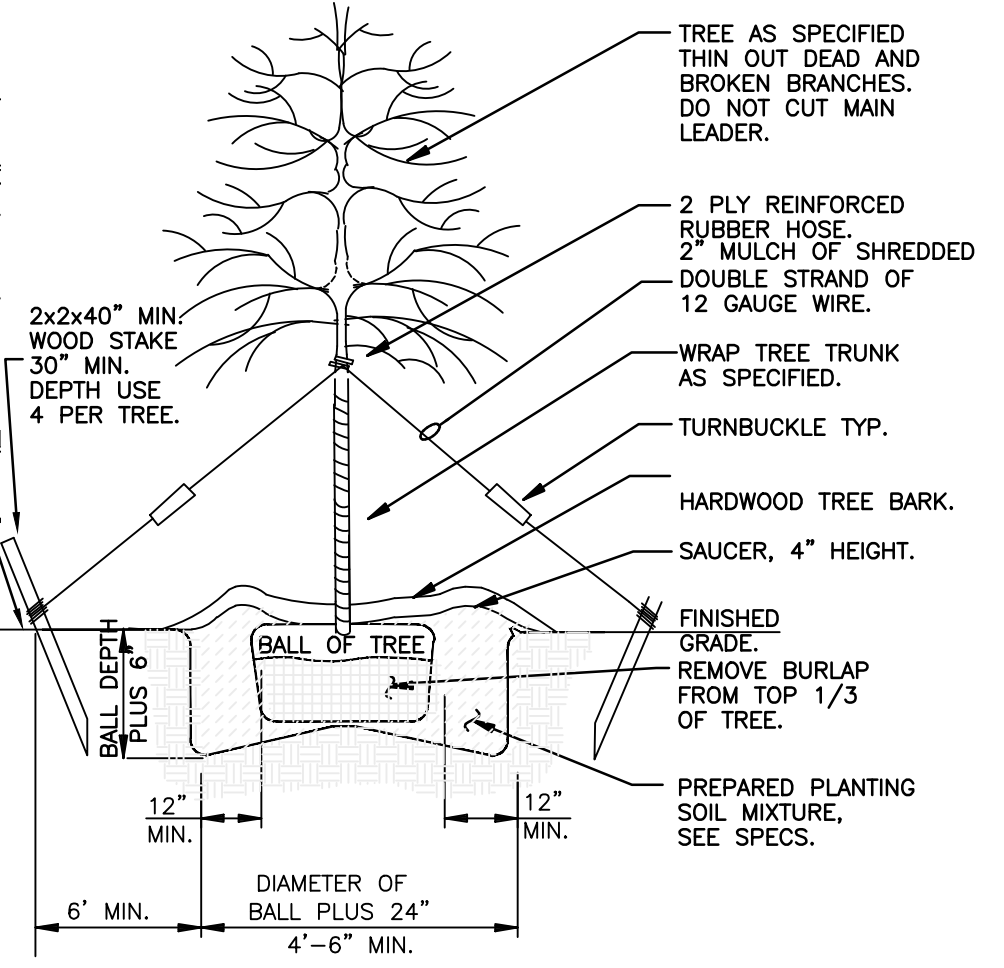
SITE PLAN

DATE: SEPTEMBER 20, 2022	SCALE: 1"=30'	MAC FILE NUMBER: C3.0 SITE PLAN.dwg
MCE PROJ. # 09072-0001	HORIZONTAL: 1"=30'	DRAWING NUMBER: C3.0
DRAWN: JFS	VERTICAL: N/A	REVISION: 0
DESIGNED: KLT		
CHECKED: KLT		
PROJ. MGR.: CHS		
STATUS: PRELIMINARY DRAWINGS FOR REVIEW PURPOSES ONLY		





SHRUB PLANTING DETAIL  
NOT TO SCALE



TREE PLANTING DETAIL-LARGE TREE  
NOT TO SCALE

- PLANTING NOTES**
- EXISTING UTILITIES SHOWN ARE APPROXIMATE AND SHALL BE VERIFIED IN THE FIELD PRIOR TO BEGINNING WORK. CONTRACTOR SHALL CONTACT NC ONE CALL CENTER AT 1-800-632-4949 FOR LOCATION OF EXISTING UTILITIES PRIOR TO BEGINNING CONSTRUCTION. THE CONTRACTOR SHALL EXERCISE CAUTION WHEN WORKING AROUND EXISTING UTILITIES TO REMAIN.
  - PLANT LIST IS PROVIDED FOR CONVENIENCE ONLY. IN THE CASE OF DISCREPANCIES BETWEEN THE PLAN AND PLANT LIST QUANTITIES, THE PLAN SHALL TAKE PRECEDENCE.
  - AFTER THE SITE IS STABILIZED AND FREE OF SEDIMENTATION, THE CONTRACTOR SHALL REMOVE ALL TEMPORARY EROSION CONTROL DEVICES, SILT, RIP RAP, AND TEMPORARY STONE STAGING AREAS FOR REPLACEMENT WITH PLANTING SOIL. PROVIDE PLANTING ACCORDING TO THE LANDSCAPE PLAN.
  - TEMPORARY EROSION CONTROL SEED MUST BE FULLY REMOVED PRIOR TO PREPARATION OF PERMANENT SEED, SOD OR LANDSCAPE BEDS.
  - UNLESS OTHERWISE NOTED IN THE PLANT LIST, THE CONTRACTOR SHALL OBTAIN AND INSTALL ONLY PLANT MATERIAL THAT IS GROWN ON ITS OWN ROOT. ALL GRAFTED OR BUDDED PLANT MATERIAL WILL BE REJECTED.
  - ALL TREES SHALL BE OBTAINED FROM THE NURSERY WITH EXPOSED ROOT CROWNS. B&B MATERIAL DELIVERED TO SITE WITH BURIED OR RECENTLY BURIED ROOT CROWNS WILL BE REJECTED.
  - FURNISHED PLANT MATERIAL SHALL MEET THE MINIMUM HEIGHT OR MINIMUM SPREAD DIMENSIONS SHOWN IN THE PLANT LIST HEADINGS. THE CONTRACTOR SHALL UTILIZE THE MOST STRINGENT DIMENSION SHOWN ON THE PLANT LIST.
  - DO NOT PLANT IN STORM WATER CONVEYANCE SWALES OR PROVIDE FINE GRADING THAT DISRUPTS FLOW OR CHANGES LONGITUDINAL SLOPES.
  - THE PLANTING LAYOUT WITHIN PLANTING BEDS SHOULD BE SHIFTED TO MINIMIZE CONFLICTS WITH EXISTING TREE ROOTS.
  - THE CONTRACTOR SHALL SEED ALL DISTURBED AREAS WITH COMMON BERMUDA TURFGRASS INCLUDING CONSTRUCTION ACCESS OUTSIDE PROJECT LIMITS.
  - LAWN AREAS ARE TO BE SODDED WITH CELEBRATION BERMUDA TURFGRASS.
  - SPACING OF TREES SHOULD ALLOW FOR A CLEAR VIEW OF BUILDINGS AND LAND USE
  - STREET TREES SHALL BE PLANTED AS CANOPY TREES INSTALLED AS ILLUSTRATED ON PLAN. ANY TREE LOCATIONS CONFLICTING WITH PROPOSED UTILITIES SHALL BE RESOLVED IN THE FIELD.
  - STREET TREES SHALL BE PLACED AT LEAST 8' FROM LIGHT POLES AND 10' FROM ELECTRICAL TRANSFORMERS FOR SERVICE; CONTRACTOR TO FIELD VERIFY ALL LIGHT AND UTILITY LOCATIONS PRIOR TO INSTALLATION.
  - WHERE PLANTINGS ARE NOT REQUIRED BY CHATHAM COUNTY UDO, BUT ARE SHOWN ON THE PLAN FOR REFERENCE ONLY WITH THE NOTATION NIC (NOT IN CONTRACT), DESIGN IS SUBJECT TO CHANGE WITHOUT NOTIFICATION.
  - ALL PARKING LOT ISLANDS ARE TO BE MULCHED WITH TRIPLE SHREDDED HARDWOOD MULCH 3" DEEP.
  - STREET LIGHTS ARE SHOWN FOR SCHEMATIC PURPOSES AND MAY CHANGE BASED ON FINAL LAYOUT TO BE PROVIDED BY DUKE PROGRESS ENERGY.

- GENERAL NOTES - APPLY TO ALL LANDSCAPE SHEETS**
- THE CONTRACTOR SHALL VISIT THE SITE AND BECOME FAMILIAR WITH EXISTING SITE CONDITIONS PRIOR TO CONSTRUCTION.
  - THE CONTRACTOR IS RESPONSIBLE FOR OBTAINING ALL NECESSARY PERMITS AND FOR ADHERENCE TO ORDINANCES, REGULATIONS, LAWS AND CODES HAVING JURISDICTION OVER THE PROPERTY PRIOR TO COMMENCING WORK.
  - ALL MATERIALS CONSTRUCTION, AND WORKMANSHIP SHALL MEET THE CHATHAM COUNTY UNIFIED DEVELOPMENT ORDINANCE (UDO) STANDARDS AND THE CHATHAM COUNTY DESIGN GUIDELINES.
  - EXISTING UTILITIES SHOWN ARE APPROXIMATE AND SHALL BE VERIFIED IN THE FIELD PRIOR TO BEGINNING WORK. CONTRACTOR SHALL CONTACT NC ONE CALL CENTER AT 1-800-632-4949 FOR LOCATION OF EXISTING UTILITIES PRIOR TO BEGINNING CONSTRUCTION. THE CONTRACTOR SHALL EXERCISE CAUTION WHEN WORKING AROUND EXISTING UTILITIES TO REMAIN.
  - ALL WORK WITHIN THE NCDOT ROW SHALL CONFORM TO NCDOT STANDARDS AND SPECIFICATIONS. THE CONTRACTOR SHALL OBTAIN ALL NEEDED PERMITS, AGREEMENTS AND SUPPLY NOTIFICATIONS OF CLOSURES FROM THE NCDOT.
  - CONSTRUCTION STAKEOUT FOR THIS PROJECT SHALL BE PROVIDED BY THE CONTRACTOR USING A DIGITAL (CADD) FILE PROVIDED THROUGH THE CLIENT. THE CONTRACTOR SHALL NOTIFY THE ENGINEER IMMEDIATELY OF ANY DISCREPANCIES FOUND BETWEEN THE DIGITAL FILE AND THE STAKING DIMENSIONS SHOWN ON THE PLAN OR DISCREPANCIES FOUND BETWEEN THE LAYOUT AND THE SITE. ANY MODIFICATIONS MADE BY OTHERS TO THE DIGITAL FILE PROVIDED SHALL RENDER IT VOID. IN THE EVENT OF DISCREPANCIES BETWEEN THE CONTRACT DOCUMENTS AND THE DESIGN LAYOUT OR EXISTING CONDITIONS, THE CONTRACT DOCUMENTS TAKE PRECEDENCE OVER THE DIGITAL FILE.
  - UTILITIES ARE SHOWN FOR COORDINATION AND REFERENCE ONLY. CONTRACTOR TO REFER TO CIVIL DRAWINGS FOR ALL UTILITY INFORMATION.

Sym.	Botanical Name	Common Name	Qty.	Caliper	Height	Spread	Comments
<b>Trees</b>							
AR	Acer rubrum 'October Glory'	October Glory Red Maple	14	2.5"	12'	.....	BB, Evenly Branched, Matched, Limbed Up
AS	Acer saccharum 'Green Mountain'	Green Mountain Sugar Maple	7	2.5"	12'	.....	BB, Evenly Branched, Matched, Limbed Up
AA	Amelanchier alabara 'Autumn Brilliance'	Autumn Brilliance Serviceberry	5	2.5"	12'	.....	BB, Evenly Branched, Matched, Limbed Up
IAF	Ilex X Nello R 'Stevens'	Nello R Stevens Holly	12	.....	8'	4'	BB, Evenly Branched, Matched
LI	Lagerstroemia indica 'Natchez'	Natchez Crepe Myrtle	7	.....	12'	.....	BB, Multi stem, 3 cane min., Matched, Limbed Up
OV	Ostrya virginiana	American Hopbroombeam	2	2.5"	12'	.....	BB, Evenly Branched, Matched, Limbed Up
PY	Prunus x yedoensis	Yoshino Cherry	6	2.5"	12'	.....	BB, Evenly Branched, Matched, Limbed Up
QN	Quercus nuttallii 'Big Boy'	Big Boy Nuttall Oak	5	2.5"	12'	.....	BB, Evenly Branched, Matched, Limbed Up
QP	Quercus phellos 'Hightower'	Hightower Willow Oak	12	2.5"	12'	.....	BB, Evenly Branched, Matched, Limbed Up
TGG	Thuja x 'Green Giant'	Green Giant Arborvitae	9	.....	8'	4'	BB, Evenly Branched, Matched
ZS	Zelkova serrata 'Village Green'	Village Green Zelkova	4	2.5"	12'	.....	BB, Evenly Branched, Matched, Limbed Up
<b>Shrubs and Groundcovers</b>							
DVJ	Disyllum 'Vintage Jade'	Vintage Jade Distylium	69	.....	18"-24"	.....	3 gal. container, 3' o.c.
ICC	Ilex cornuta 'Carissa'	Carissa Holly	52	.....	18"-24"	.....	3 gal. container, 3' o.c.
IBN	Ilex cornuta 'Dwarf Burford'	Dwarf Burford Holly	12	.....	30"-36"	.....	7 gal. container, 8' o.c.
IGS	Ilex glabra 'Shamrock'	Compact Inkberry Holly	35	.....	18"-24"	.....	3 gal. container, 3' o.c.
IVN	Ilex vomitoria 'Tiana'	Dwarf Yaupon Holly	173	.....	18"-24"	.....	3 gal. container, 4' o.c.
LM	Liriodie mexican 'Big Blue'	Big Blue Liriodie	310	.....	.....	.....	1 qt. container full, 18" o.c.
MC	Muhlenbergia capillaris 'White Cloud'	White Muhly Grass	140	.....	.....	.....	1 gal. container, 2.5' o.c.
NT	Narcissus x 'Tahiti'	Tahiti Daffodil	310	.....	.....	.....	14/16 cm bulb, mix with Big Blue Liriodie, 18" o.c.
PA	Pennisetum alopecuroides 'Cassian'	Cassian Dwarf Fountain Grass	117	.....	.....	.....	1 gal. container, 2' o.c.
RR	Rosa x 'Raddon'	Pink Knockout Rose	12	.....	18"-24"	.....	3 gal. container, 3' o.c.
SS	Salvia sylvestris 'May Night'	May Night Autumn Sage	130	.....	.....	.....	1 gal. container, 18" o.c.

REVNO.	DESCRIPTIONS	DATE

SEAL  
PRELIMINARY PLAN  
FOR REVIEW PURPOSES ONLY

SEAL  
PRELIMINARY PLAN  
FOR REVIEW PURPOSES ONLY

**MCKIM & CREED**  
1730 Varsity Drive, Suite 500  
Raleigh, North Carolina 27606  
Phone: (919)233-8091, Fax: (919)233-8031  
F-1222  
www.mckimcreed.com

**WILSON | BLOUNT**  
**DEVELOPMENT**

**BRIAR CHAPEL FITNESS FACILITY**  
**PRELIMINARY PLAN**  
**LANDSCAPING PLAN**

DATE: SEPTEMBER 20, 2022	SCALE: HORIZONTAL: 1"=30'	MAC FILE NUMBER: 2022.LANDSCAPING.PLAN
MCE PROJ.# 09072-0001	VERTICAL: N/A	DRAWING NUMBER: C10.0
DRAWN: JFS		
DESIGNED: KLT		
CHECKED: KLT		
PROJ. MGR: CHS		

STATUS: **PRELIMINARY DRAWINGS** REVISION 0  
FOR REVIEW PURPOSES ONLY