

# 7688 US-64 W

PITTSBORO, NORTH CAROLINA 27312  
CHATHAM COUNTY

**OWNER:**

GRAMQUIST LLC  
312 SOUTHMOOR OAKS CT  
CARY, NC 27518  
PH: (919) 349-0454

**CIVIL ENGINEER:**

TIMMONS GROUP  
5410 TRINITY ROAD, SUITE 102  
RALEIGH, NC 27607  
JON BLASCO, PLA / ASLA  
JON.BLASCO@TIMMONS.COM  
PH: (919) 532-3243

**SITE DATA TABLE**

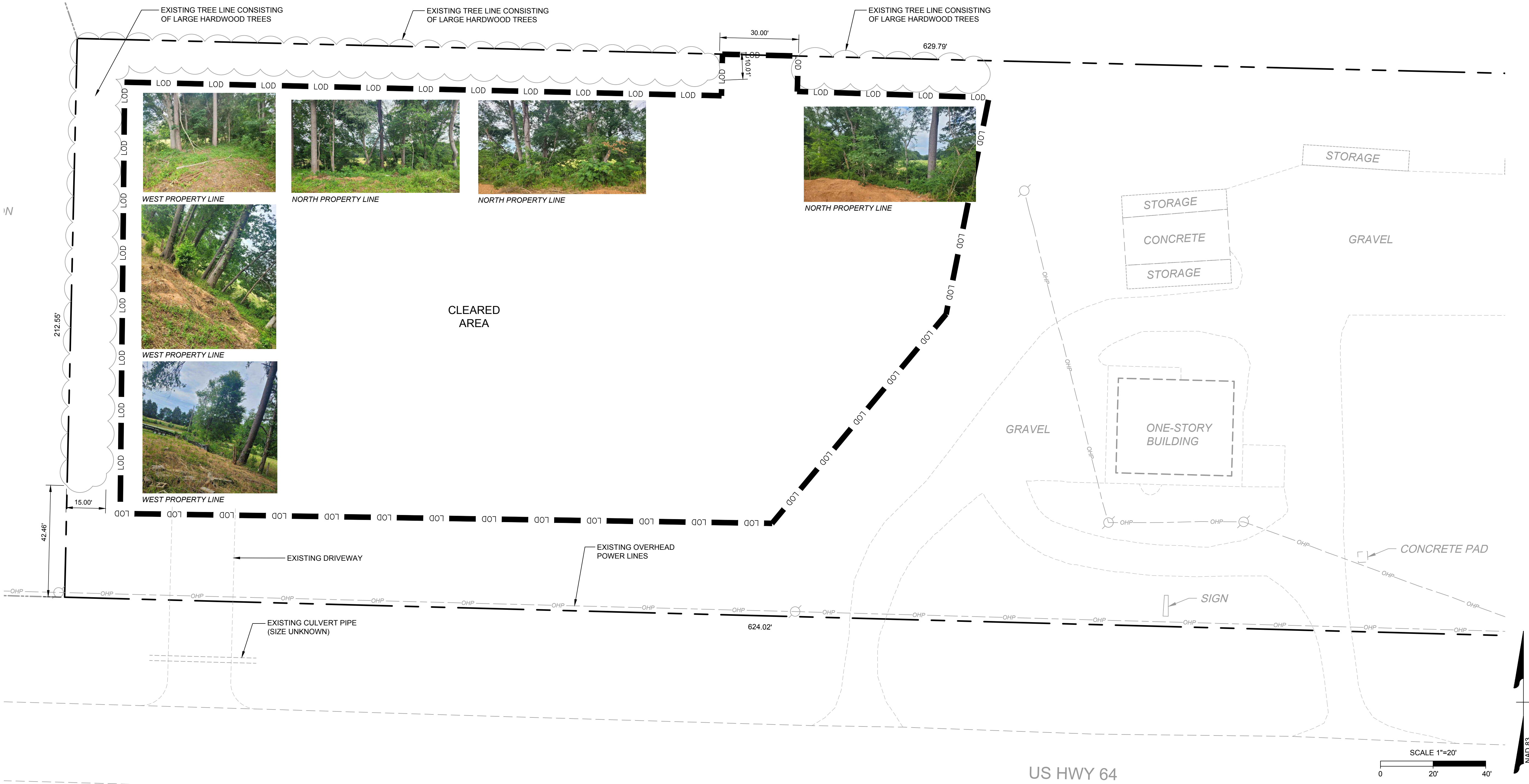
PROPERTY ADDRESS:	7688 US-64 W, PITTSBORO, NC 27312
PARCEL NUMBER:	0060119
PROPERTY ZONING:	B-1
PROPERTY AREA:	3.04 AC.

**NOTE:**  
EXISTING CONDITIONS BASED ON A PHYSICAL SURVEY CONDUCTED BY RESIDENTIAL LAND SERVICES, PLLC ON 03/17/2021. GIS INFORMATION OBTAINED FROM NC ONE MAP ON 11/15/2021, AND FIELD NOTES.

**SHEET INDEX:**  
L1.0 EXISTING CONDITIONS  
L2.0 PLANTING PLAN  
L2.1 PLANTING NOTES AND DETAILS



VICINITY MAP  
SCALE: 1"=500'



ALL CONSTRUCTION TO BE IN ACCORDANCE WITH ALL CHATHAM COUNTY, NCDEQ, AND NCDOT STANDARDS, SPECIFICATIONS, AND DETAILS



THIS DRAWING PREPARED AT THE  
**RALEIGH OFFICE**  
5410 Trinity Road, Suite 102 | Raleigh, NC 27607  
TEL 919.532.4951 FAX 919.532.3124 www.timmons.com

REVISION DESCRIPTION	DATE

YOUR VISION ACHIEVED THROUGH OURS.

DATE  
07/08/2022

DRAWN BY  
J. BLASCO

DESIGNED BY  
J. BLASCO

CHECKED BY

SCALE  
AS SHOWN

**TIMMONS GROUP**

NORTH CAROLINA LICENSE NO. C-1652

**7688 US 64 W**

PITTSBORO - CHATHAM COUNTY - NORTH CAROLINA

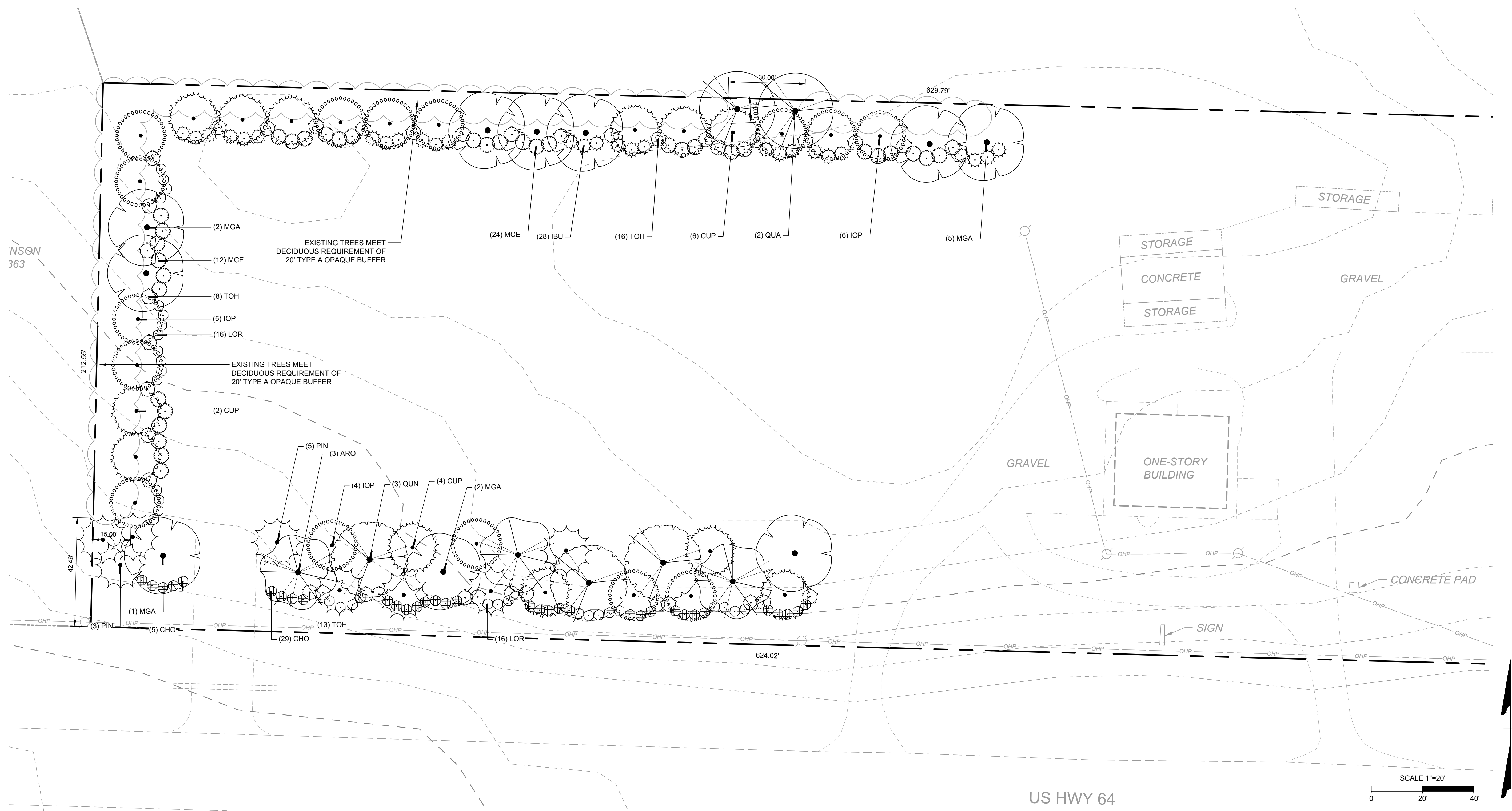
**EXISTING CONDITIONS**

JOB NO.  
55028

SHEET NO.  
L1.0

These plans and associated documents are the exclusive property of TIMMONS GROUP and may not be reproduced in whole or in part and shall not be used for any purpose whatsoever, inclusive, but not limited to construction, bidding, and/or construction staking without the express written consent of TIMMONS GROUP.





NS&N  
363

212.55'

42.46'

15.00'

629.79'

624.02'

US HWY 64

SCALE 1"=20'

NAD 83

PLANT SCHEDULE

TREES	QTY	BOTANICAL NAME	COMMON NAME	MIN. INSTALLED SIZE	ROOT
ARO	3	ACER RUBRUM 'OCTOBER GLORY'	OCTOBER GLORY RED MAPLE	2" CAL.	B&B OR CONTAINER
CUP	12	CUPRESSUS ARIZONICA 'CAROLINA SAPPHIRE'	CAROLINA SAPPHIRE CYPRESS	6"-8" HT.	B&B OR CONTAINER
IOP	15	ILEX OPACA	AMERICAN HOLLY	6"-8" HT.	B&B OR CONTAINER
MGA	10	MAGNOLIA GRANDIFLORA	SOUTHERN MAGNOLIA	6"-8" HT.	B&B OR CONTAINER
PIN	8	PINUS TAEDA	LOBLOLLY PINE	2" CAL.	B&B OR CONTAINER
QUA	2	QUERCUS ALBA	WHITE OAK	2" CAL.	B&B OR CONTAINER
QUN	3	QUERCUS NUTTALLII	NUTTALL OAK	2" CAL.	B&B OR CONTAINER
SHRUBS	QTY	BOTANICAL NAME	COMMON NAME	MIN. INSTALLED SIZE	ROOT
CHO	34	CHAMAECYPARIS OBTUSA 'GOLDEN FERNSPRAY'	GOLDEN FERNSPRAY HINOKI FALSE CYPRESS	24" HT.	CONTAINER
IBU	28	ILEX CORNUTA 'BURFORDII NANA'	DWARF BURFORD HOLLY	24" HT.	CONTAINER
LOR	32	LOROPETALUM CHINENSE 'RED DIAMOND'	RED DIAMOND FRINGE FLOWER	24" HT.	CONTAINER
MCE	36	MYRICA CERIFERA	WAX MYRTLE	24" HT.	CONTAINER
TOH	37	THUJA OCCIDENTALIS 'HIGHLIGHTS'	HIGHLIGHTS' ARBORVITAE	24" HT.	CONTAINER

ALL CONSTRUCTION TO BE IN ACCORDANCE WITH ALL CHATHAM COUNTY, NCDEQ, AND NCDOT STANDARDS, SPECIFICATIONS, AND DETAILS

THIS DRAWING PREPARED AT THE  
RALEIGH OFFICE  
5410 Trinity Road, Suite 102 | Raleigh, NC 27607  
TEL 919.866.4951 FAX 919.833.8124 www.timmons.com

YOUR VISION ACHIEVED THROUGH OURS.

DATE  
11/19/2021  
DRAWN BY  
J. BLASCO  
DESIGNED BY  
J. BLASCO  
CHECKED BY

SCALE  
AS SHOWN

**TIMMONS GROUP**  
NORTH CAROLINA LICENSE NO. C-1652  
7688 US 64 W  
PITTSBORO - CHATHAM COUNTY - NORTH CAROLINA  
PLANTING PLAN

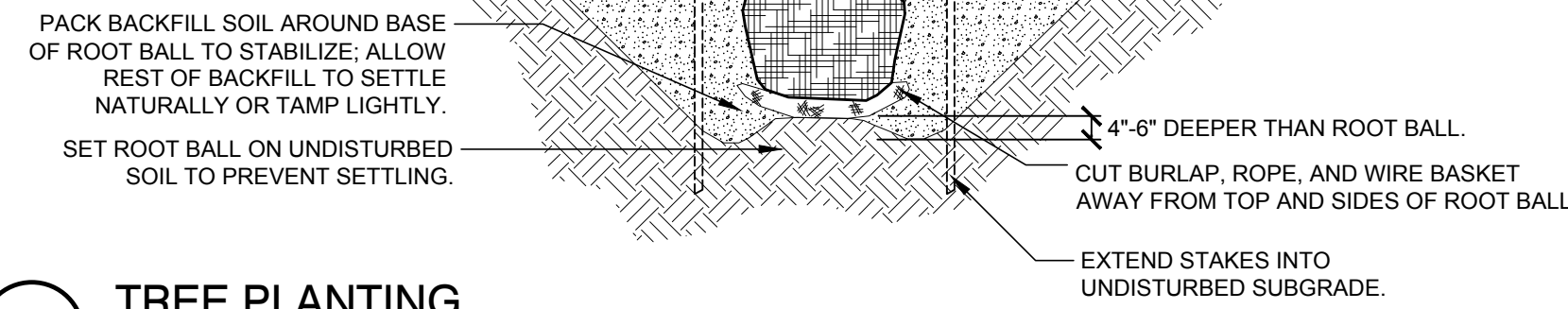
JOB NO.  
49903  
SHEET NO.  
L.2.0

These plans and associated documents are the exclusive property of TIMMONS GROUP and may not be reproduced in whole or in part and shall not be used for any purpose whatsoever, inclusive, but not limited to construction, bidding, and/or construction staking without the express written consent of TIMMONS GROUP.



**NOTES:**

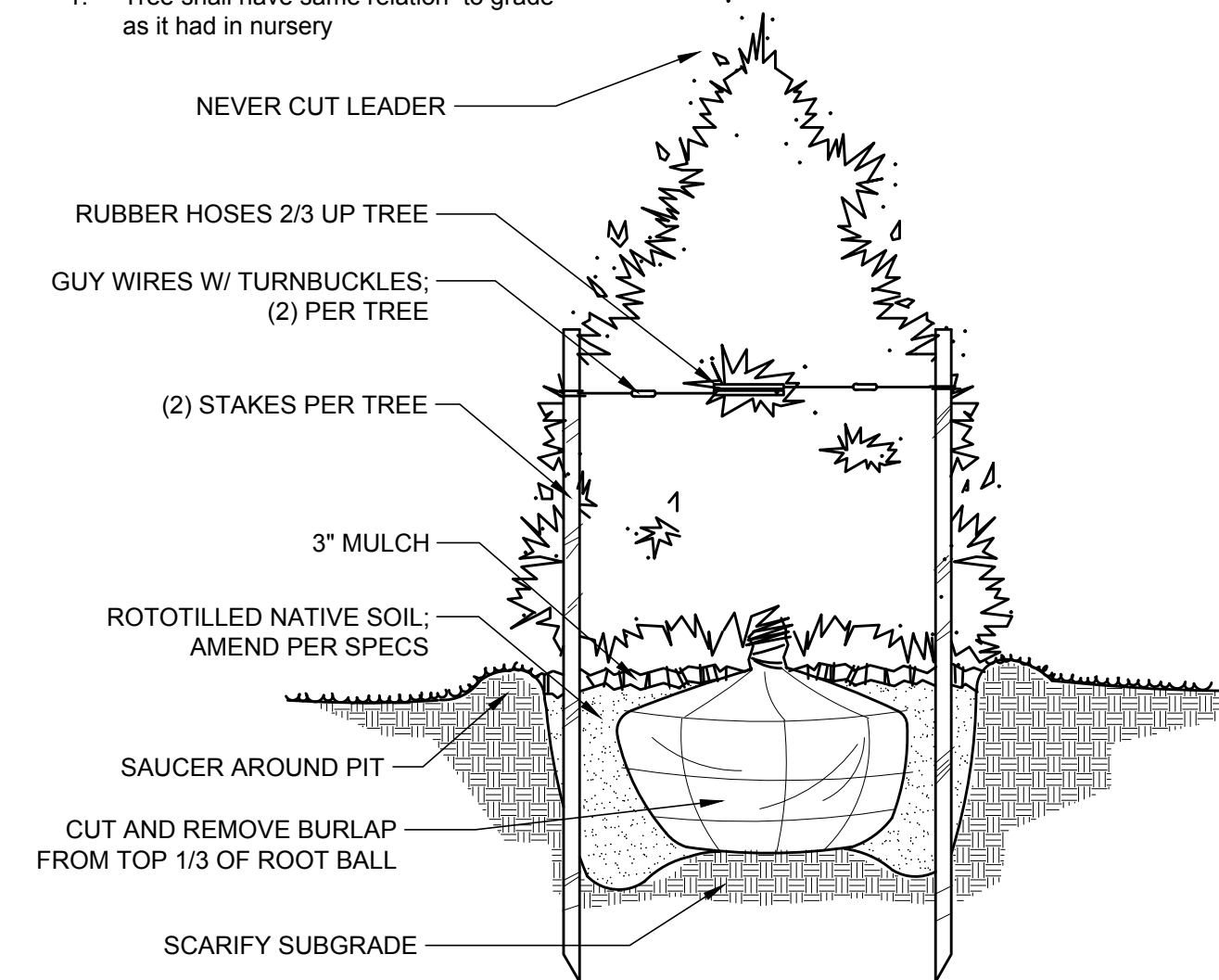
1. WHERE SEVERAL TREES WILL BE PLANTED CLOSE TOGETHER SUCH THAT THEY WILL LIKELY SHARE ROOT SPACE, TILL IN SOIL AMENDMENTS TO A DEPTH OF 4'-6" (10'-15CM) OVER THE ENTIRE AREA.
2. FOR CONTAINER-GROWN TREES, USE FINGERS OR SMALL HAND TOOLS TO PULL THE ROOTS OUT OF THE OUTER LAYER OF POTTING SOIL, THEN CUT OR PULL APART ANY ROOTS CIRCLING THE PERIMETER OF THE CONTAINER.
3. DURING THE DESIGN PHASE, CONFIRM THAT WATER DRAINS OUT OF THE SOIL; USE LOWERED PLANTING HOLE DEPTH AND DESIGN ALTERNATE DRAINAGE SYSTEM AS REQUIRED.
4. THOROUGHLY SOAK ROOT BALL AND ADJACENT PREPARED SOIL SEVERAL TIMES DURING FIRST MONTH AFTER PLANTING AND REGULARLY THROUGHOUT THE FOLLOWING TWO SUMMERS.
5. THE PLANTING PROCESS IS SIMILAR FOR DECIDUOUS AND EVERGREEN TREES.
6. DO NOT WRAP TRUNK; MARK THE NORTH SIDE OF THE TREE IN THE NURSERY AND LOCATE TO THE NORTH IN THE FIELD.
7. AVOID PURCHASING TREES WITH TWO LEADERS OR REMOVE ONE AT PLANTING. OTHERWISE, DO NOT PRUNE TREE AT PLANTING EXCEPT FOR SPECIFIC STRUCTURAL CORRECTIONS.
8. BEFORE PLANTING, ADD 3"-4" OF WELL-COMPOSTED LEAVES, RECYCLED YARD WASTE OR OTHER COMPOST AND TILL INTO TOP 6" OF PREPARED SOIL. ADD COMPOST AT 20-35% BY VOLUME TO BACKFILL SOIL.



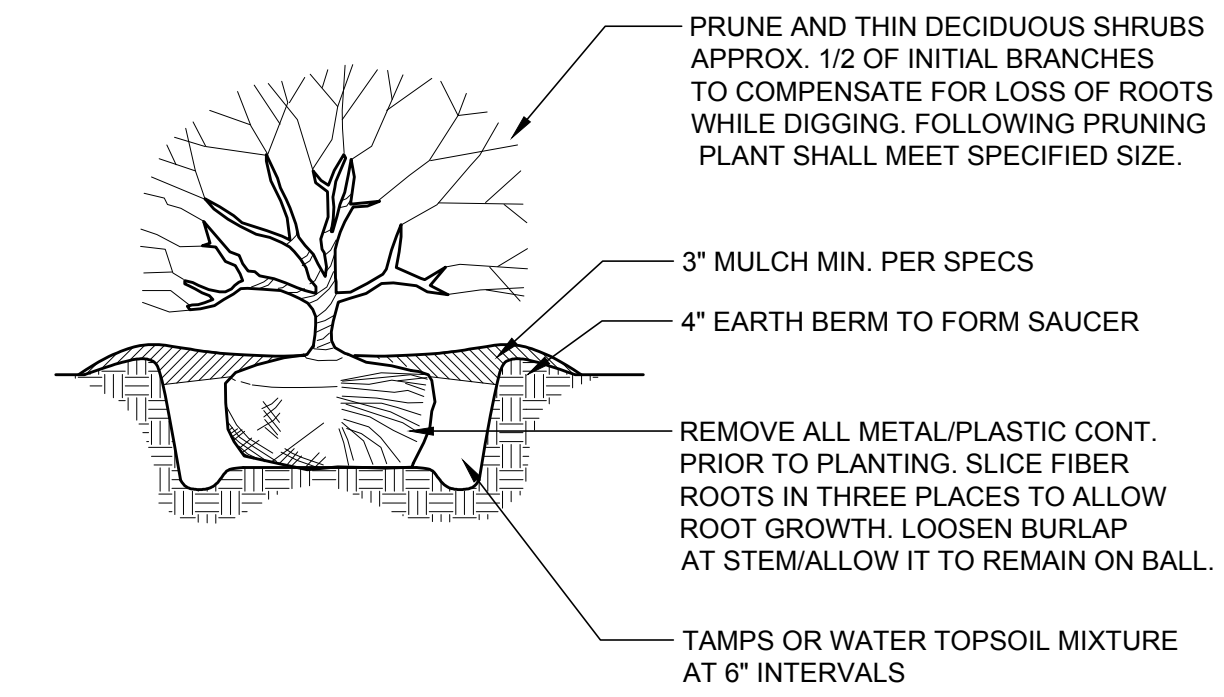
**1 TREE PLANTING**  
NTS

**NOTES:**

1. Tree shall have same relation to grade as it had in nursery



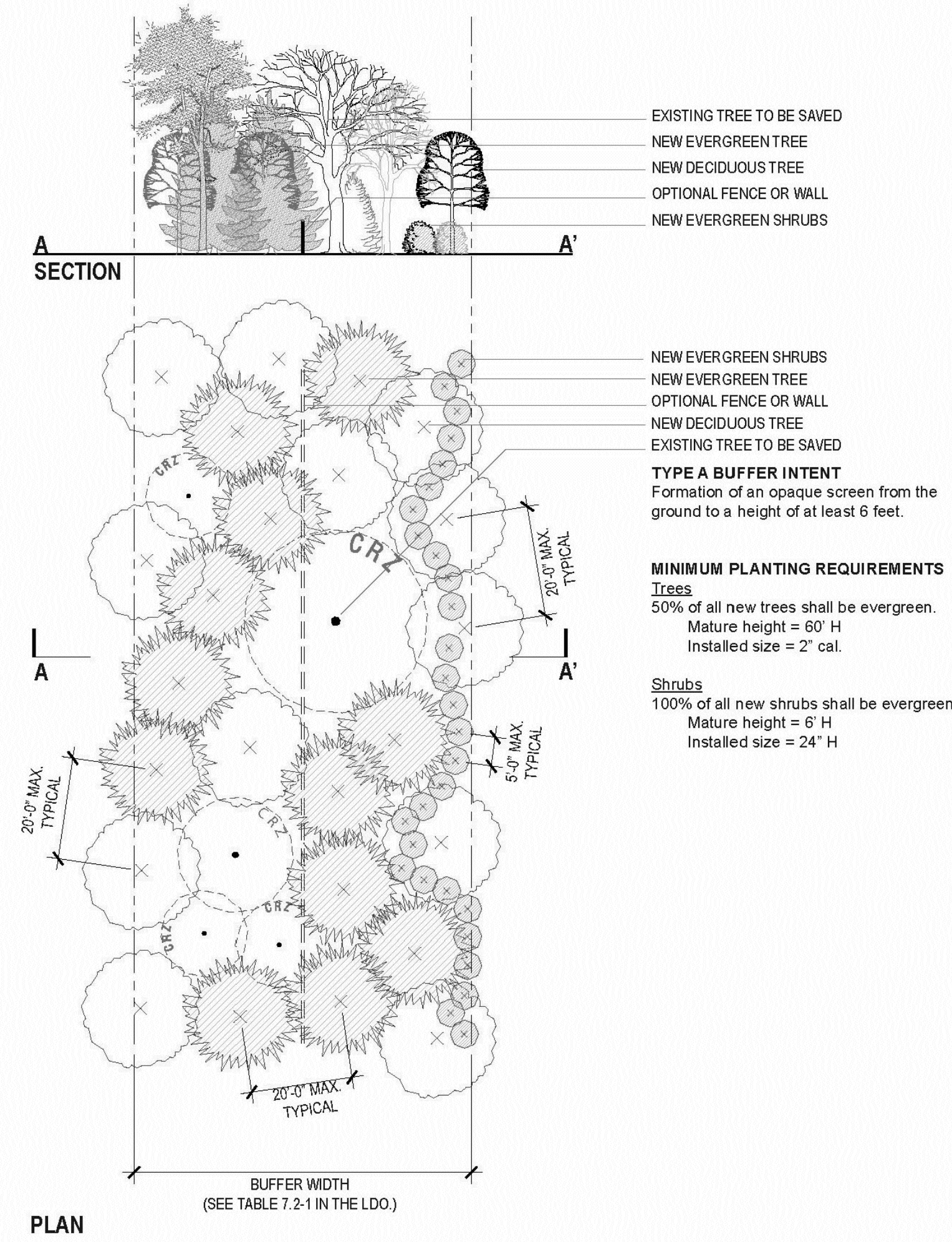
**2 EVERGREEN PLANTING**  
NTS



**NOTES:**

1. SOIL MIX: 1/3 ORGANIC MATTER, 2/3 EXIST SOIL.
2. WIDTH OF PLANT PIT: SANDY SOIL, 24" WIDER THAN PLANT BALL; CLAY SOIL, 12" WIDER THAN PLANT BALL
3. FOR PLANTING AREAS WHERE SOIL HAS BEEN COM-PACTED BY EQUIP. CONTACT LA PRIOR TO PLANTING.
4. FOR CAMELIAS, RHODOS, AZALEAS, AND LAURELS: SOIL MIX, 2/3 ORGANIC AND 1/3 EXISTING SOIL
5. SHRUB SHALL BEAR SAME RELATIONSHIP TO GRADE AS IT DID PRIOR TO DIGGING.

**3 SHRUB PLANTING**  
NTS



**4 TYPE A BUFFER PLANTING DETAIL**  
NTS

**GENERAL PLANTING NOTES:**

1. All plant materials to comply with American Standard for Nursery Stock ANSI.Z60.
2. Substitutions of plant materials specified can only occur with prior approval by Landscape Architect.
3. Contractor is solely responsible for all plant maintenance including shrubs, trees, and groundcovers and shall maintain a clean and weed free site throughout the maintenance period.
4. All plant material shall be spaced and located per plan. If conflicts arise between actual size of area and plans, contractor shall contact landscape architect for resolution. Failure to make such conflicts known to the owner or landscape architect will result in contractor's liability to relocate materials.
5. Trees shall be staked per the details. Contractor is responsible for making sure that trees remain vertical and upright during the warranty period. All tree staking and guys shall be removed at the end of the warranty period.
6. Install plants and mulch beds with 4" of shredded hardwood mulch.
7. Establish mulch beds around existing trees to remain.
8. Lawn areas to be tall-type fescue sod. All sod should have no less than a 95% germination and no more than 0.5% weed seed to be considered acceptable for substantial completion.
9. Landscape Contractor to guarantee plant materials for a one year period following substantial completion.
10. Areas damaged from plant relocation or other activities of Landscape Contractor to be seeded and established at no additional cost to the owner.
11. Use herbicides, pesticides, and fertilizer in a manner consistent with the federal insecticide, fungicide, and rodenticide act and in accordance with label restrictions.
12. Plants shall be watered at least 2 times per week unless soil is moist based on core sample or moisture meter reading. Water more frequently during establishment. Once plans go dormant, reduce watering amounts until the active growing season reconvenes at the beginning of April or when plants begin to leaf out, whichever comes first. When watering plants: Water at the base of the plant with low flow hose end nozzle. Water for a minimum of 5-10 minutes per plant for deep and slow soaking into the root zone of each plant. During drought periods all water restrictions apply. It may be necessary to truck in non-city water to meet the needs of the plant material. This shall apply to all planted areas including the no-mow areas.
13. Remove (either manually or with pesticide treatment) all weeds in mulch areas, plant beds, tree rings, and hardscape areas: including but not limited to nutsedge, grasses, invasive plants, and any non-desirable plant material. This treatment shall occur monthly from installation until the end of the warranty / maintenance period.
14. Mulch shall be replenished as needed, especially after heavy rain events.

ALL CONSTRUCTION TO BE IN ACCORDANCE WITH ALL CHATHAM COUNTY, NCDEQ, AND NCDOT STANDARDS, SPECIFICATIONS, AND DETAILS



THIS DRAWING PREPARED AT THE  
**RALEIGH OFFICE**  
 5410 Trinity Road, Suite 102 | Raleigh, NC 27607  
 TEL 919.866-4951 | FAX 919.833-8124 | www.timmons.com

YOUR VISION ACHIEVED THROUGH OURS.

REVISION DESCRIPTION	DATE
	11/19/2021

**TIMMONS GROUP**  
 NORTH CAROLINA LICENSE NO. C-1652  
 7688 US 64 W  
 PITTSBORO - CHATHAM COUNTY - NORTH CAROLINA  
 PLANTING NOTES & DETAILS

JOB NO. 49903  
 SHEET NO. L2.1

S:\33445028-HWY64\leaf7\open\DWG\SheetCD\565028-3344.L2-1.NTDT.dwg | Printed on 7/8/2022 2:13 PM | by Jon Blasco

This plan and associated documents are the exclusive property of TIMMONS GROUP and may not be reproduced in whole or in part and shall not be used for any purpose whatsoever, inclusive, but not limited to construction, bidding, and/or construction staking without the express written consent of TIMMONS GROUP.