

UTILITY NOTES

- THIS SUBDIVISION IS TO BE SERVED BY SANITARY SEPTIC SOILS.
- WATER LINE TO BE LOCATED 2' OFF OF EDGE OF PAVEMENT.
- PROPOSED GRADING SHOWN FOR ROADS ONLY. LOTS WILL BE INDIVIDUALLY GRADED AT THE TIME OF HOME CONSTRUCTION.

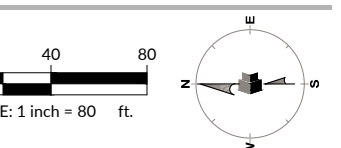
ABBREVIATION LEGEND

BOA = BLOW OFF ASSEMBLY
 FHA = FIRE HYDRANT ASSEMBLY
 GV = GATE VALVE
 OHE = OVERHEAD ELECTRICAL

RBV 1525, LLC
 3424 MIDLAIRE FARM ROAD,
 SUITE 135
 CARY, NC 27518

FIRST PLAN
FLATIRON FOREST

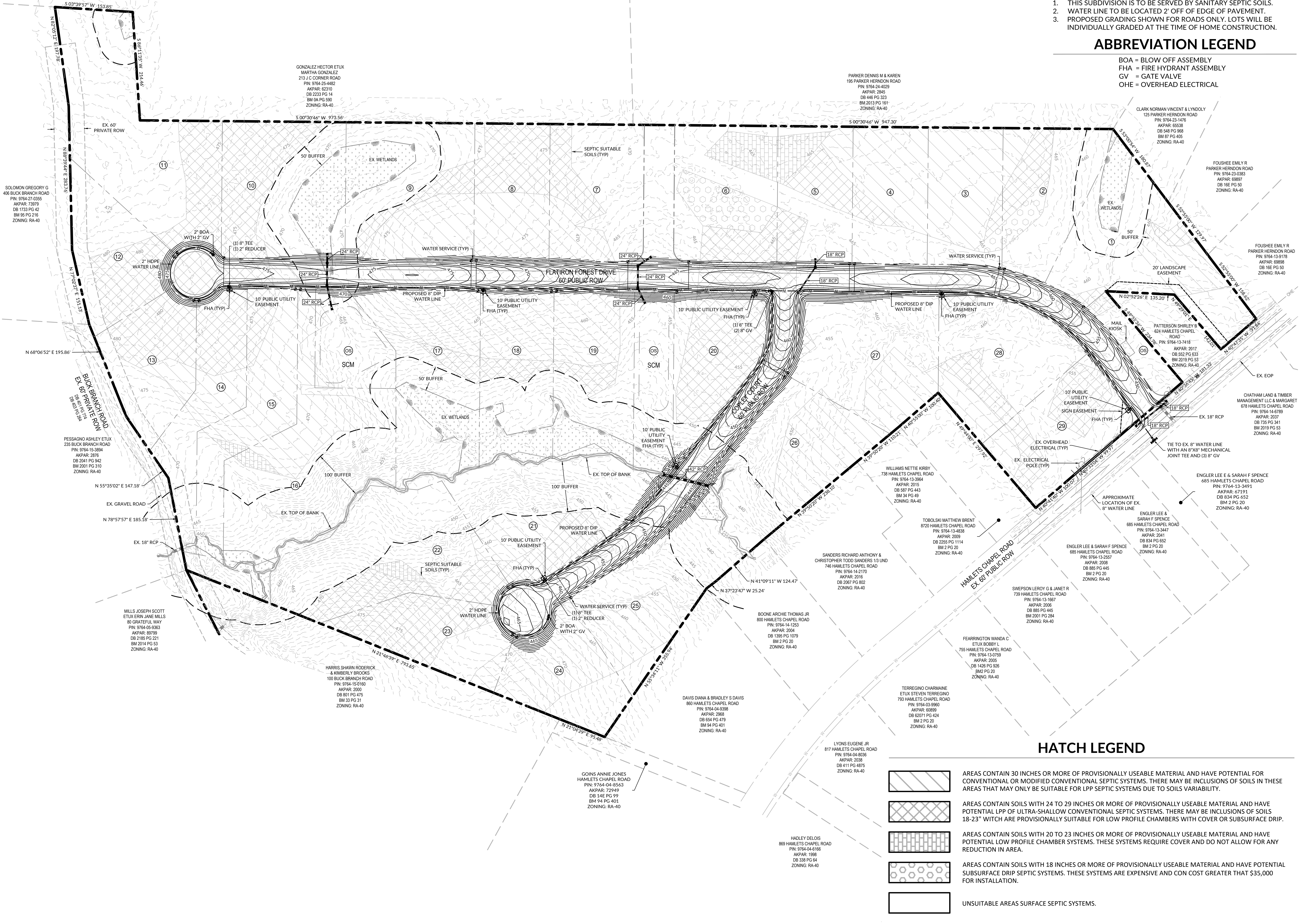
678 HAMLETS CHAPEL ROAD | CHATHAM COUNTY, NC 27312



INITIAL PLAN DATE: JUNE 2022
 REVISIONS:
 1. 06/21/22 WR
 PER CHATHAM COUNTY

WR Job No. DATE
 02220132 JUNE 2022
 DRN: TDW DGN: TDW CKD: BDM

UTILITY & DRAINAGE PLAN



HATCH LEGEND

- AREAS CONTAIN 30 INCHES OR MORE OF PROVISIONALLY USEABLE MATERIAL AND HAVE POTENTIAL FOR CONVENTIONAL OR MODIFIED CONVENTIONAL SEPTIC SYSTEMS. THERE MAY BE INCLUSIONS OF SOILS IN THESE AREAS THAT MAY ONLY BE SUITABLE FOR LPP SEPTIC SYSTEMS DUE TO SOILS VARIABILITY.
- AREAS CONTAIN SOILS WITH 24 TO 29 INCHES OR MORE OF PROVISIONALLY USEABLE MATERIAL AND HAVE POTENTIAL LPP OF ULTRA-SHALLOW CONVENTIONAL SEPTIC SYSTEMS. THERE MAY BE INCLUSIONS OF SOILS 18-23" WICH ARE PROVISIONALLY SUITABLE FOR LOW PROFILE CHAMBERS WITH COVER OR SUBSURFACE DRIP.
- AREAS CONTAIN SOILS WITH 20 TO 23 INCHES OR MORE OF PROVISIONALLY USEABLE MATERIAL AND HAVE POTENTIAL LOW PROFILE CHAMBER SYSTEMS. THESE SYSTEMS REQUIRE COVER AND DO NOT ALLOW FOR ANY REDUCTION IN AREA.
- AREAS CONTAIN SOILS WITH 18 INCHES OR MORE OF PROVISIONALLY USEABLE MATERIAL AND HAVE POTENTIAL SUBSURFACE DRIP SEPTIC SYSTEMS. THESE SYSTEMS ARE EXPENSIVE AND CON COST GREATER THAT \$35,000 FOR INSTALLATION.
- UNSUITABLE AREAS SURFACE SEPTIC SYSTEMS.

K:\22\04\00\220132\Flatiron Forest\CD\Drawings\0403\0403.dwg - Survey, June 21, 2022 09:18:47 - TWAL:TES