

VICINITY MAP
NOT TO SCALE

DEVELOPER:

The Parks at Meadowview, LLC
P.O. Box 607
Pittsboro, NC 27312

CONSULTANTS:

Attorney	Bradshaw & Robinson, LLP
Land Planner/Civil Engineer:	CE Group, Inc.
Ecologist/Soils Evaluation	Soil & Environmental Consultants
Environmental	Audubon International
Land Surveyor	Absolute Land Surveying
Traffic Engineer	Ramey Kemp & Associates, Inc.
Wastewater	
Treatment Engineer	W. Lee Fleming Jr., Engineer
Hydrogeologist	Edwin Andrews & Associates
Economic Analysis	Miley Gallo & Associates

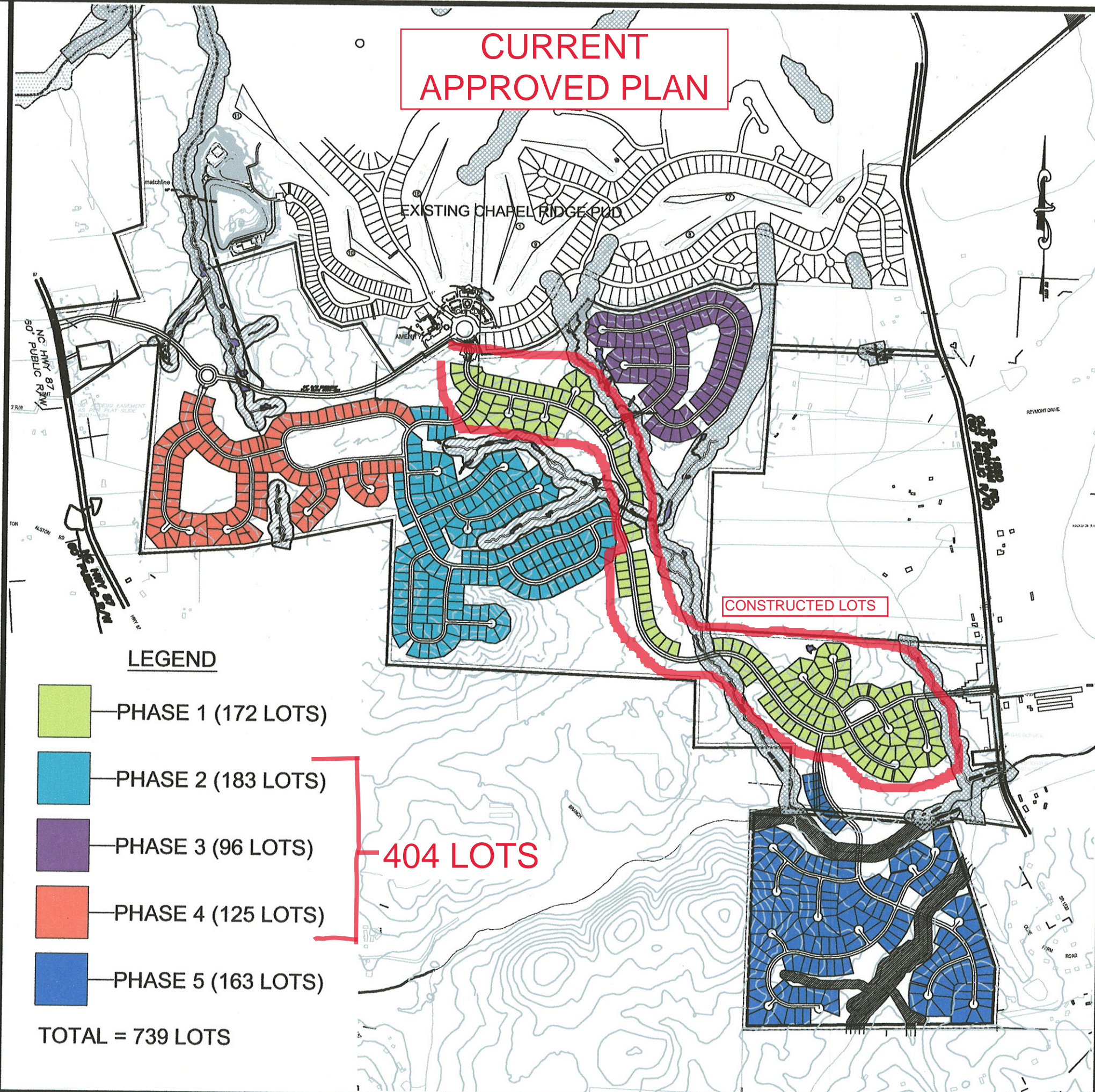
OVERALL SITE DATA

TOTAL SITE AREA:	± 948.46 Acres
RESIDENTIAL LOT AREA:	± 323.4 Acres
STREET RIGHT OF WAY:	± 79.1 Acres
TOTAL OPEN SPACE:	± 538.5 Acres
CENTRAL AMENITY AREA:	± 7.4 Acres

HARRIS PARCEL SITE DATA

TOTAL SITE AREA:	± 155.36 Acres
RESIDENTIAL LOT AREA:	± 82.40 Acres
STREET RIGHT OF WAY:	± 13.84 Acres
OPEN SPACE (Not in Buffer):	± 31.68 Acres
REQUIRED 50' BUFFER:	± 17.11 Acres
ADDITIONAL 50' BUFFER:	± 10.33 Acres
TOTAL OPEN SPACE:	± 59.12 Acres

NOTE: THE FEATURES DESCRIBED AND DEPICTED HEREIN ARE BASED ON CURRENT DEVELOPMENT PLANS. ACTUAL DEVELOPMENT MAY BE SUBJECT TO CHANGE BASED UPON FURTHER COUNTY REVIEW.



CURRENT APPROVED PLAN

CONSTRUCTED LOTS

LEGEND

- PHASE 1 (172 LOTS)
- PHASE 2 (183 LOTS)
- PHASE 3 (96 LOTS)
- PHASE 4 (125 LOTS)
- PHASE 5 (163 LOTS)

404 LOTS

TOTAL = 739 LOTS

CE Group, inc.
LAND PLANNING
CIVIL ENGINEERING
CONSTRUCTION MANAGEMENT
11000 Reentry Parkway, Suite 410, Cary, N.C. 27511
Voice (919) 367-6750 Fax (919) 367-6751

PUD Modification
The Parks at Meadowview
Chatham County, North Carolina
MODIFIED PHASING MAP



Date: April 10, 2006



NORTH

17

EXHIBIT