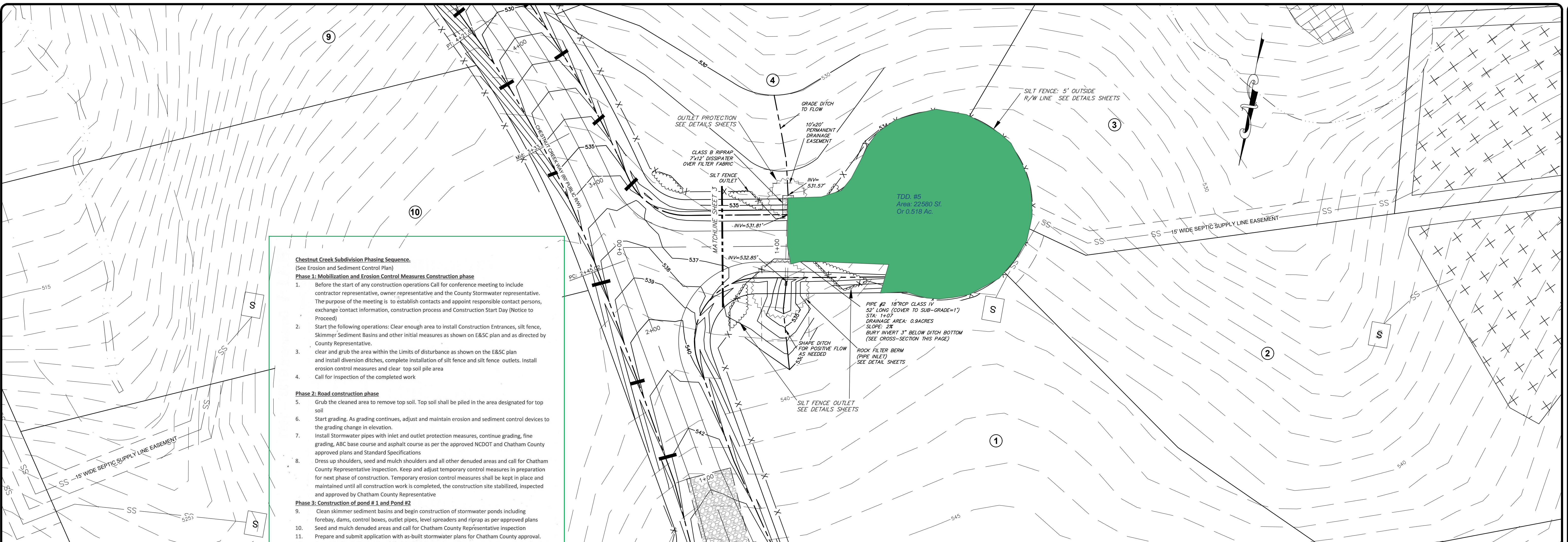


SAMIR W. BAIHO, PE
 CIVIL & STRUCTURAL ENGINEERING SERVICES, PLLC.
 4612 KAPLAN DRIVE
 RALEIGH, NORTH CAROLINA 27606
 BUSINESS LICENSE P-0537

TUSCAN GROUP, INC
 CHESTNUT CREEK SUBDIVISION
 JONES FERRY ROAD
 CHATHAM COUNTY
 BALDWIN TOWNSHIP
 CHESTNUT CREEK WAY PLAN AND PROFILE / E & SC PLAN

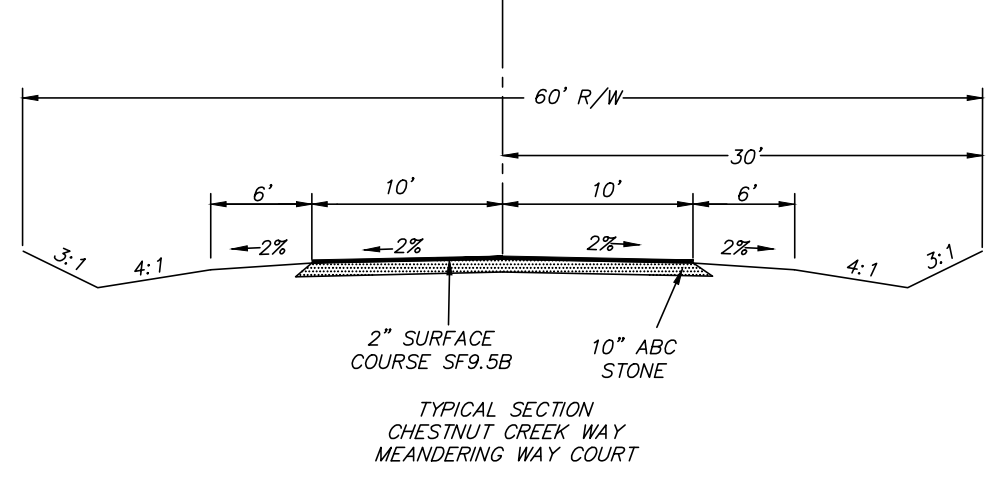
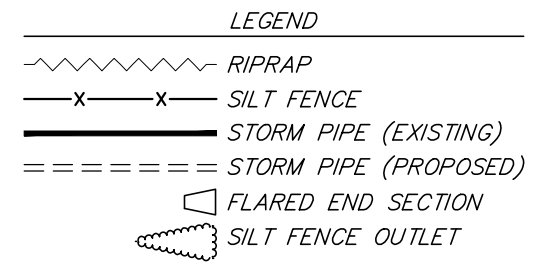
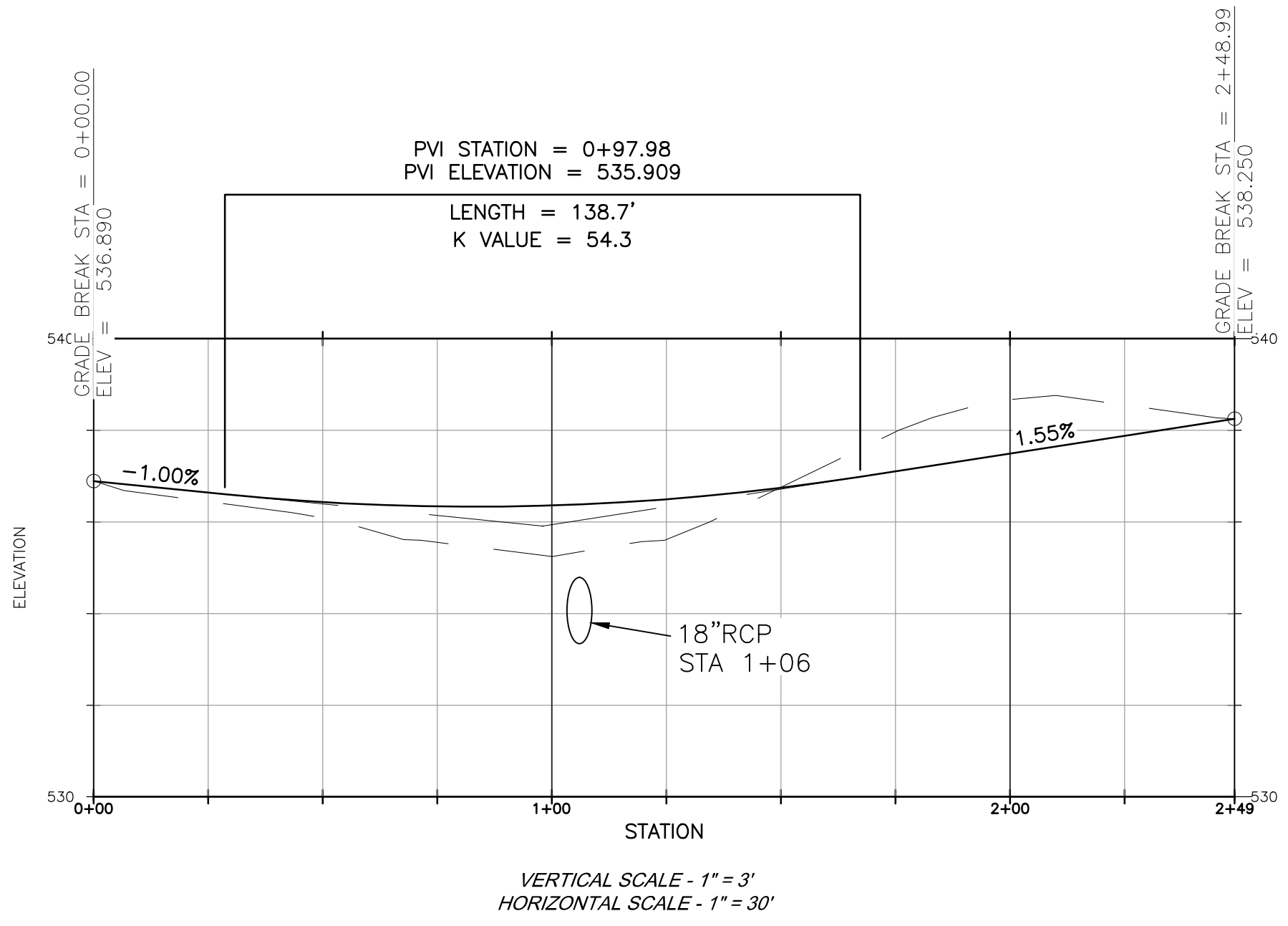
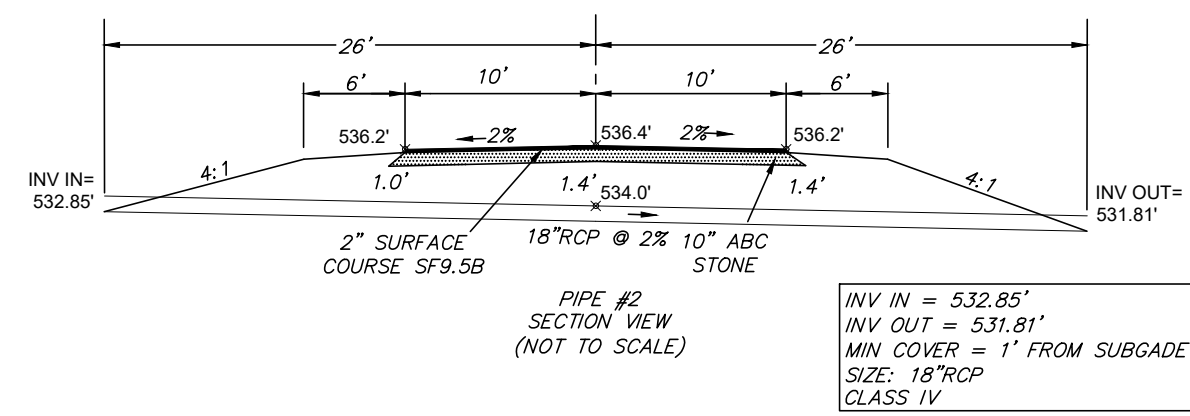
REVISIONS
 NO. DATE DESCRIPTION

DATE: 07.10.21 SCALE: 1"=40'
 DESIGNED: SWB CHECKED: SWB
 DRAWING: JKF APPROVED: TG INC
 SHEET: 6.2 OF 12
 CAD FILE: CHESTNUT
 PROJECT NO: 2021.01

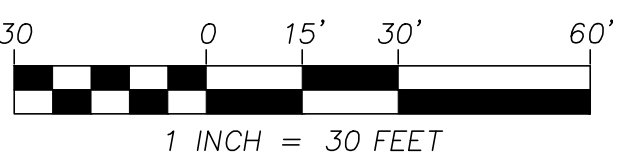
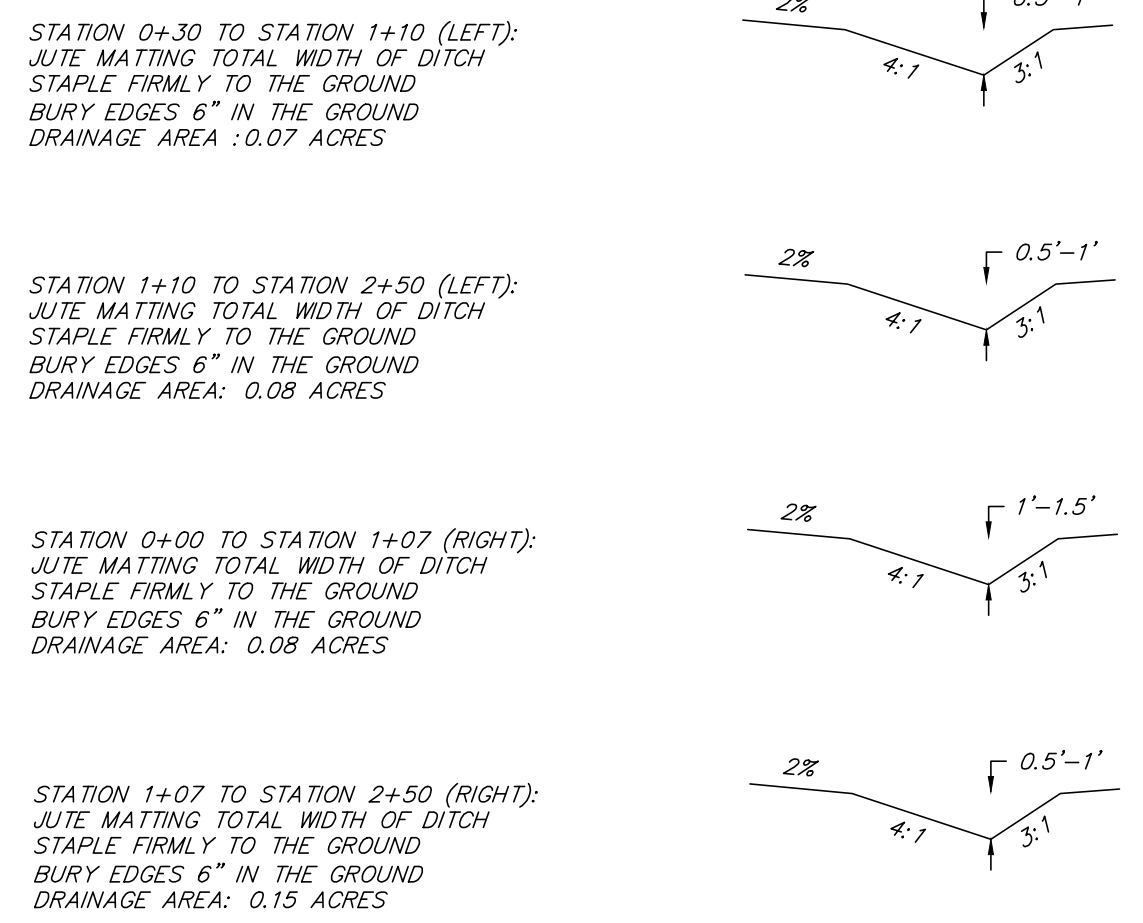


- Chestnut Creek Subdivision Phasing Sequence.**
(See Erosion and Sediment Control Plan)
- Phase 1: Mobilization and Erosion Control Measures Construction phase**
1. Before the start of any construction operations Call for conference meeting to include contractor representative, owner representative and the County Stormwater representative. The purpose of the meeting is to establish contacts and appoint responsible contact persons, exchange contact information, construction process and Construction Start Day (Notice to Proceed)
 2. Start the following operations: Clear enough area to install Construction Entrances, silt fence, Skimmer Sediment Basins and other initial measures as shown on E&SC plan and as directed by County Representative.
 3. clear and grub the area within the Limits of disturbance as shown on the E&SC plan and install diversion ditches, complete installation of silt fence and silt fence outlets. Install erosion control measures and clear top soil pile area
 4. Call for inspection of the completed work
- Phase 2: Road construction phase**
5. Grub the cleaned area to remove top soil. Top soil shall be piled in the area designated for top soil
 6. Start grading. As grading continues, adjust and maintain erosion and sediment control devices to the grading change in elevation.
 7. Install Stormwater pipes with inlet and outlet protection measures, continue grading, fine grading, ABC base course and asphalt course as per the approved NCDOT and Chatham County approved plans and Standard Specifications
 8. Dress up shoulders, seed and mulch shoulders and all other denuded areas and call for Chatham County Representative inspection. Keep and adjust temporary control measures in preparation for next phase of construction. Temporary erosion control measures shall be kept in place and maintained until all construction work is completed, the construction site stabilized, inspected and approved by Chatham County Representative
- Phase 3: Construction of pond #1 and Pond #2**
9. Clean skimmer sediment basins and begin construction of stormwater ponds including forebay, dams, control boxes, outlet pipes, level spreaders and riprap as per approved plans
 10. Seed and mulch denuded areas and call for Chatham County Representative inspection
 11. Prepare and submit application with as-built stormwater plans for Chatham County approval.
 12. Approval of as-built plans is required before the erosion and sedimentation control plan for the project may be closed out

NOTE:
ROADS IN PUBLIC RIGHT OF WAY ARE DESIGNED AND CONSTRUCTED TO NCDOT SUBDIVISION ROADS MINIMUM CONSTRUCTION STANDARDS AND SPECIFICATIONS.



DITCH SECTIONS CHESTNUT CREEK WAY



TUSCAN GROUP, INC
PROJECT: **CHESTNUT CREEK SUBDIVISION**
BALDWIN TOWNSHIP, CHATHAM COUNTY

JONES FERRY ROAD
NORTH CAROLINA

MEANDERING WAY COURT PLAN AND PROFILE / E & SC PLAN

DESIGNED: SWB
CHECKED: SWB

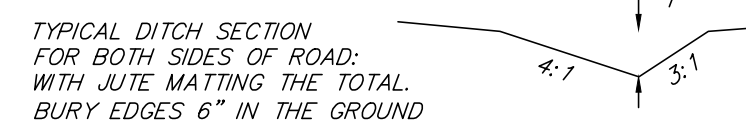
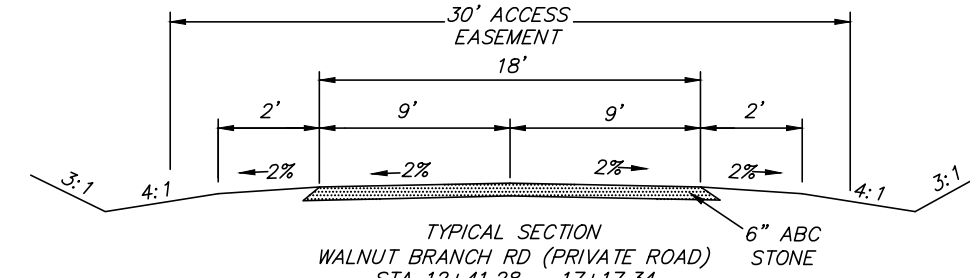
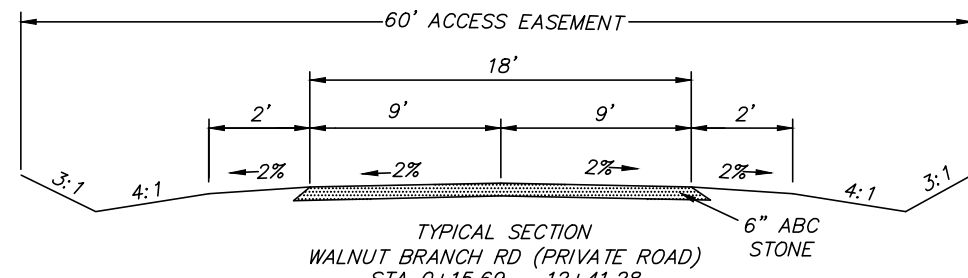
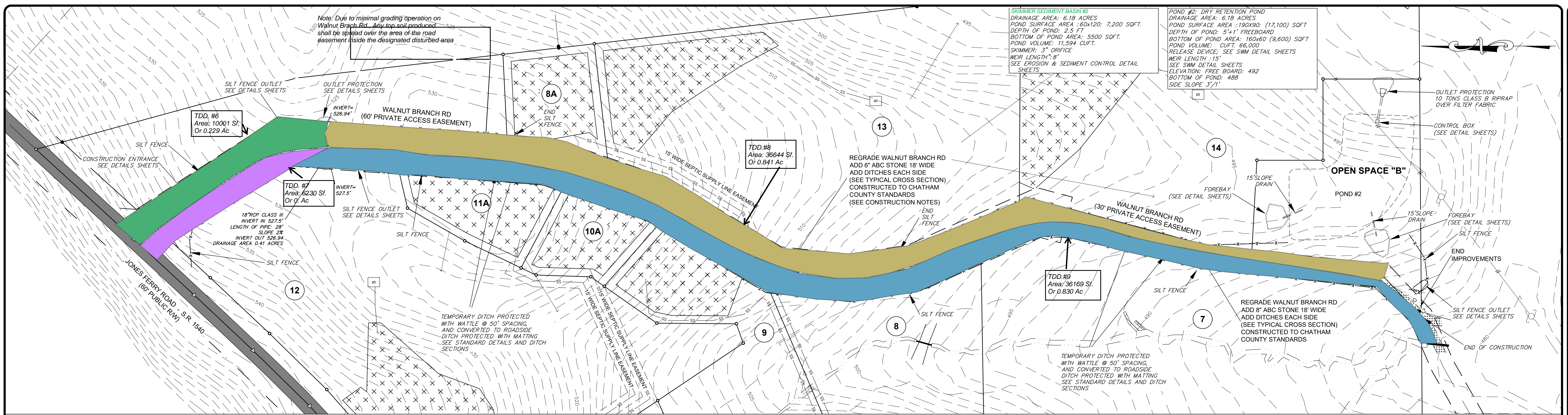
DRAWING: JKF
APPROVED: TG INC

DATE: 07.10.21
SCALE: 1"=30'

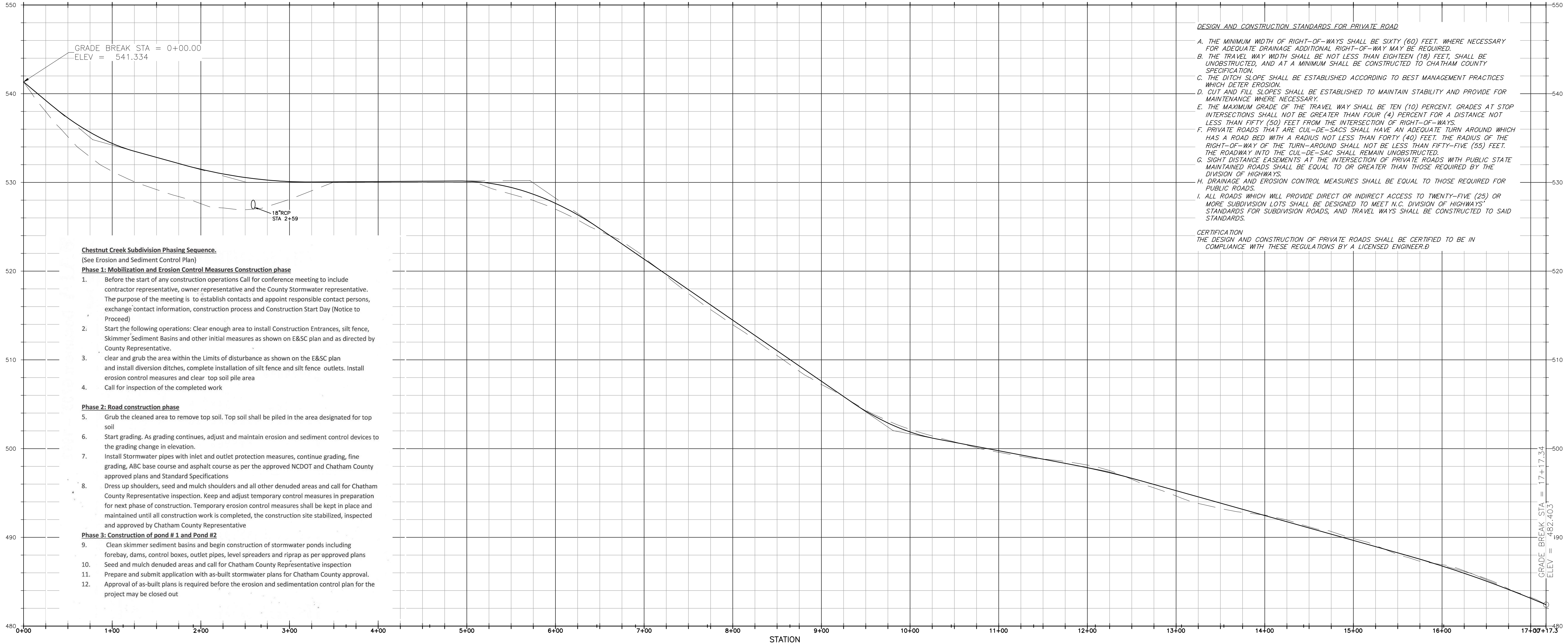
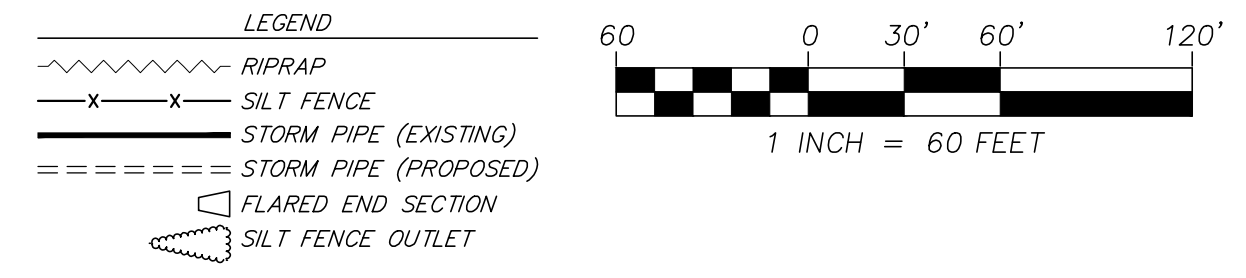
SHEET: **6.3** OF **12**

CAD FILE: **CHESTNUT**
PROJECT NO: **2021.01**

SAMIR W. BAHHO, PE
CIVIL & STRUCTURAL ENGINEERING SERVICES, PLLC.
4612 KAPLAN DRIVE
RALEIGH, NORTH CAROLINA 27606
BUSINESS LICENSE P-6537



THIS PAGE NOT A PART OF NCDOT SUBDIVISION PLAN AND DRIVEWAY PERMIT REVIEW



- Chestnut Creek Subdivision Phasing Sequence.
 (See Erosion and Sediment Control Plan)
- Phase 1: Mobilization and Erosion Control Measures Construction phase**
- Before the start of any construction operations call for conference meeting to include contractor representative, owner representative and the County Stormwater representative. The purpose of the meeting is to establish contacts and appoint responsible contact persons, exchange contact information, construction process and Construction Start Day (Notice to Proceed)
 - Start the following operations: Clear enough area to install Construction Entrances, silt fence, Skimmer Sediment Basins and other initial measures as shown on E&S&C plan and as directed by County Representative.
 - clear and grub the area within the Limits of disturbance as shown on the E&S&C plan and install diversion ditches, complete installation of silt fence and silt fence outlets. Install erosion control measures and clear top soil pile area
 - Call for inspection of the completed work
- Phase 2: Road construction phase**
- Grub the cleaned area to remove top soil. Top soil shall be piled in the area designated for top soil
 - Start grading. As grading continues, adjust and maintain erosion and sediment control devices to the grading change in elevation.
 - Install Stormwater pipes with inlet and outlet protection measures, continue grading, fine grading, ABC base course and asphalt course as per the approved NCDOT and Chatham County approved plans and Standard Specifications
 - Dress up shoulders, seed and mulch shoulders and all other denuded areas and call for Chatham County Representative inspection. Keep and adjust temporary control measures in preparation for next phase of construction. Temporary erosion control measures shall be kept in place and maintained until all construction work is completed, the construction site stabilized, inspected and approved by Chatham County Representative
- Phase 3: Construction of pond # 1 and Pond #2**
- Clean skimmer sediment basins and begin construction of stormwater ponds including forebay, dams, control boxes, outlet pipes, level spreaders and riprap as per approved plans
 - Seed and mulch denuded areas and call for Chatham County Representative inspection
 - Prepare and submit application with as-built stormwater plans for Chatham County approval.
 - Approval of as-built plans is required before the erosion and sedimentation control plan for the project may be closed out

SAMIR W. BAIHO, PE
 CIVIL & STRUCTURAL ENGINEERING SERVICES, PLLC.
 4612 KAPLAN DRIVE
 RALEIGH, NORTH CAROLINA 27606
 BUSINESS LICENSE: P-6637

TUSCAN GROUP, INC
 CHESTNUT CREEK SUBDIVISION
 JONES FERRY ROAD
 CHATHAM COUNTY
 NORTH CAROLINA
 WALNUT BRANCH ROAD PLAN AND PROFILE / E & SC PLAN

DATE: 07.10.21 SCALE: 1"=60'

DESIGNED: SWB CHECKED: SWB

DRAWN: JKF APPROVED: TG, INC

SHEET: 6.4 OF 12

CAD FILE: CHESTNUT

PROJECT NO: 2021.01