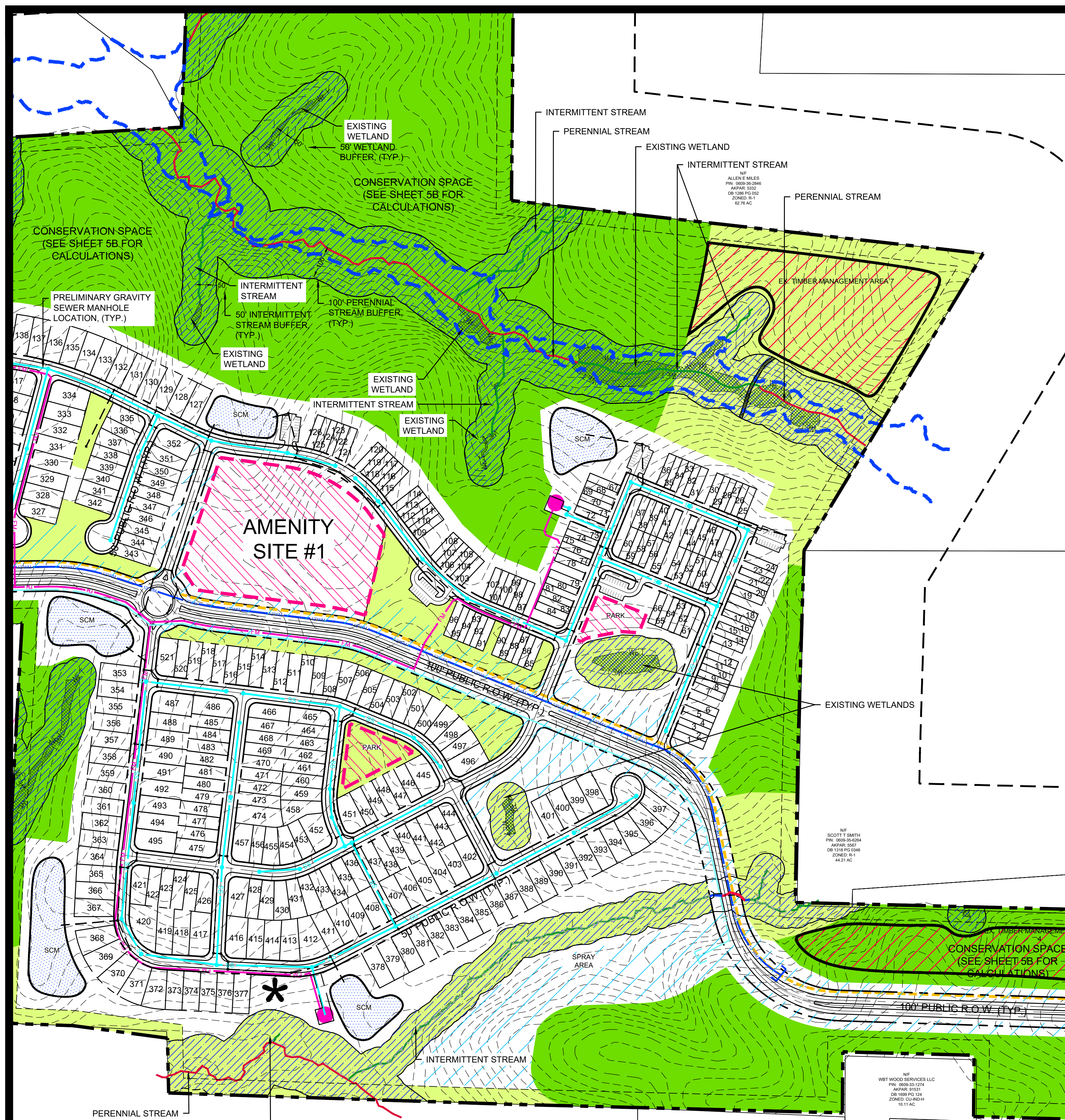


THE CONSERVANCY AT JORDAN LAKE

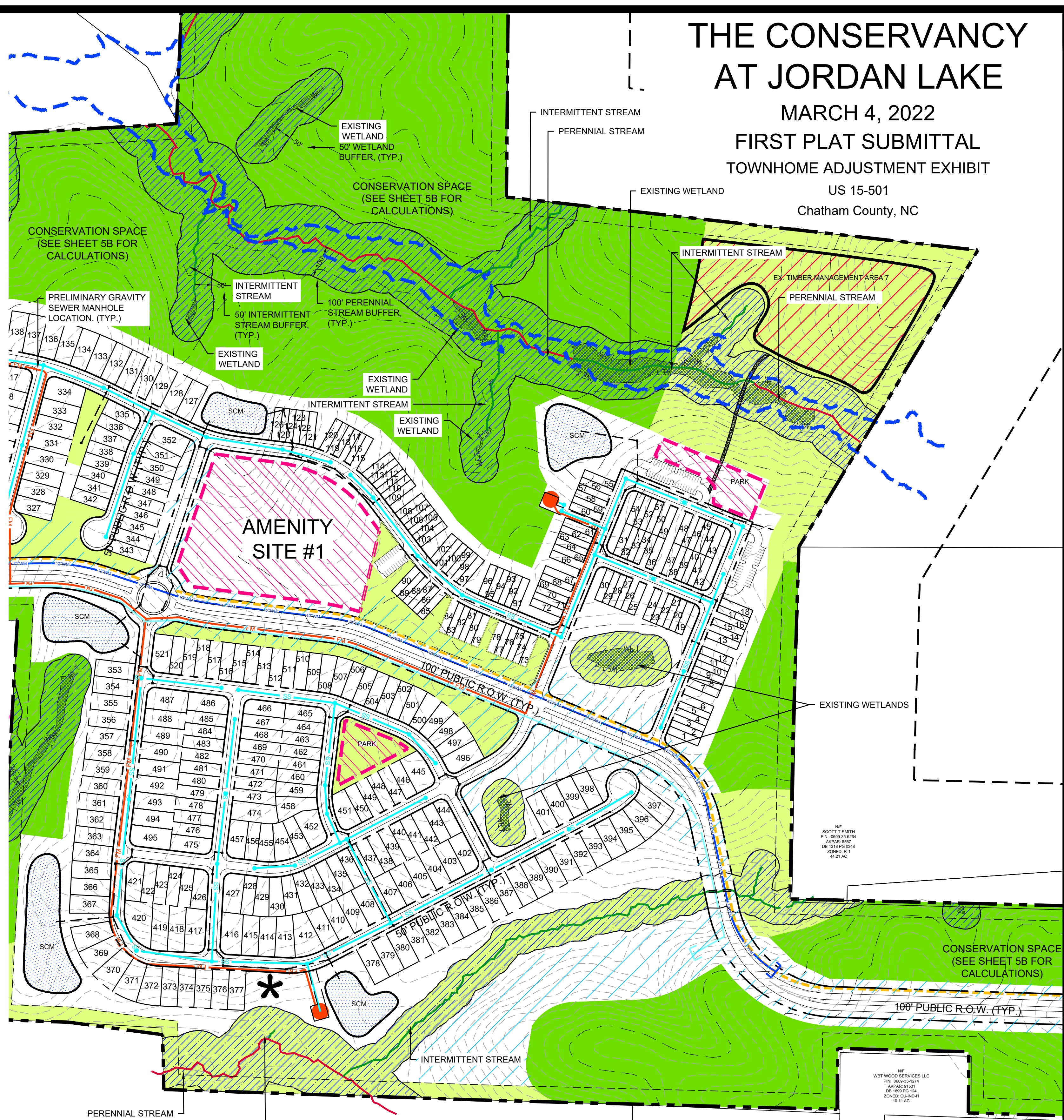
MARCH 4, 2022
FIRST PLAT SUBMITTAL
TOWNHOME ADJUSTMENT EXHIBIT

US 15-501
Chatham County, NC



ORIGINAL TOWNHOME LAYOUT

SCALE: 1" = 200'



ADJUSTED TOWNHOME LAYOUT*

SCALE: 1" = 200'

Site Data		Setbacks		Engineer / Surveyor:		Legend:	
Current Zoning:	R-1	Townhomes	Single Family	Duplex	CE Group, Inc.	301 Glenwood Avenue, Suite 220	Buffer
Total Tract Area:	± 1,262.88 AC	Front:	20'	20'	301 Glenwood Avenue, Suite 220	Raleigh, NC 27603	Perennial Stream (100' FROM BANK)
Public Roads:	± 65,303 LF	Side:	0'	0'	Phone: 919.367.8790	Contact: Mark Ashness, PE, ASLA, LEED AP	Intermittent Stream (50' FROM BANK)
Emergency Access:	± 4,883 LF	Rear:	10'	20'	David Clark, PLS	Email: mark@cegroupinc.com	Ephemeral Stream (30' FROM BANK)
Max. Impervious:	± 20.5%	Owner/Developer:		The Conservancy Real Estate Group, LLC	341 Kilmayne Drive, Suite 201	Cary, NC 27511	Linear Wetlands (50' FROM BANK)
Open Space:	SEE SHEET 5B	AKPAR: 62390, 5774, 5775, 5780, 5233, 60441, 65275, 85343, 85274, 85344, 5558, 5238, 68379, 5570, 85342, 5504, 5211, 5568, 85341, 5519, 85340, 85346, 85347, 5551, 69379, 85339, 5545, 5545, 5559, 5502, 5568		Contact: Andy Ross		Proposed SCM	
Total Lot Count:	1,524 lots						
Traditional Lots:	521 lots						
Age Targeted Lots:	1,000 lots						
WWTP Lot:	1 lot						
Amenity Lots:	2 lots						

NORTH

SCALE: 1" = 200'

PRELIMINARY DESIGN
NOT RELEASED FOR CONSTRUCTION

CE GROUP

301 GLENWOOD AVE. 220
RALEIGH, NC 27603
PHONE: 919-367-8790
FAX: 919-322-0032

www.cegroupinc.com
License # C-1739

*ADJUSTMENTS BASED ON PLANNING BOARD COMMENTS