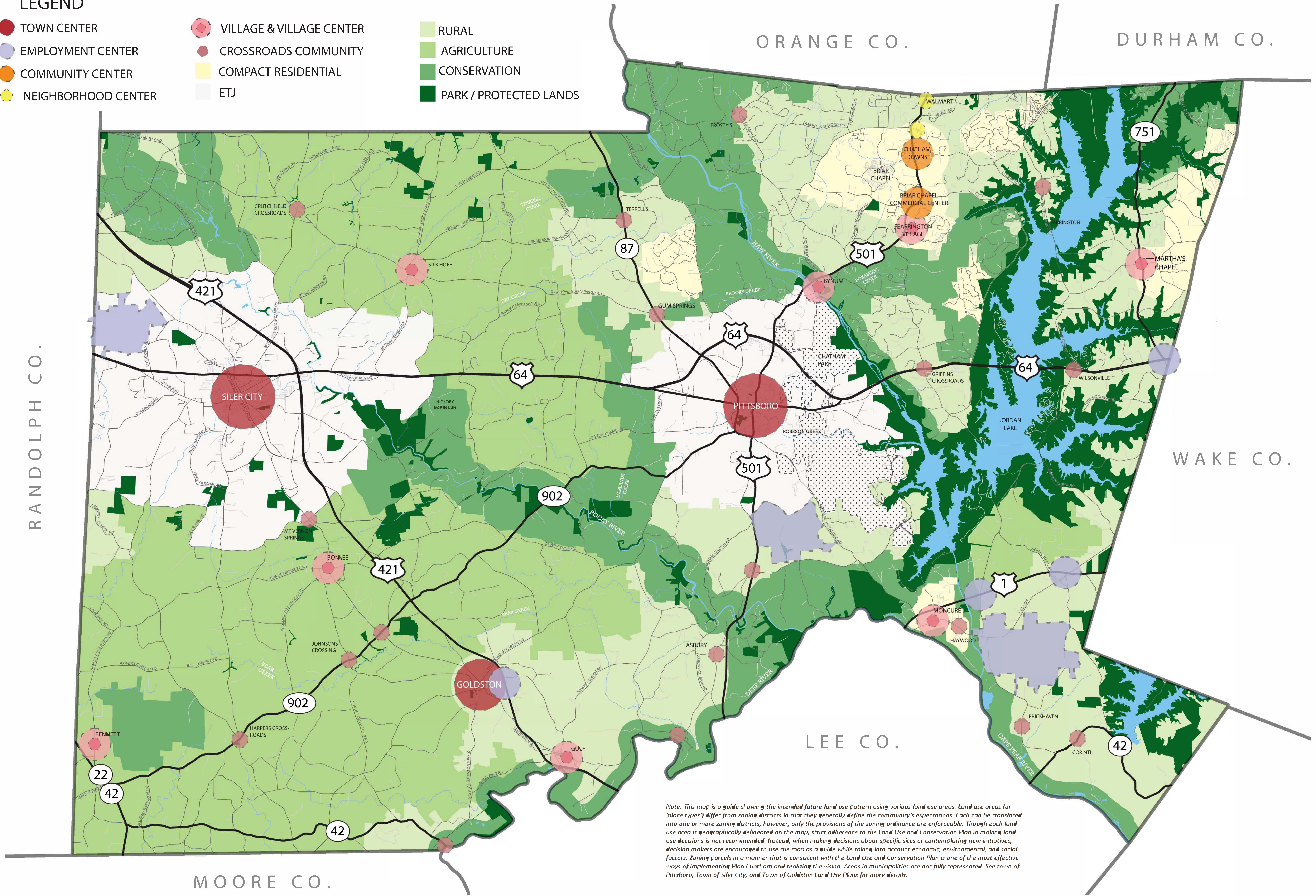


**LEGEND**

- TOWN CENTER
- EMPLOYMENT CENTER
- COMMUNITY CENTER
- NEIGHBORHOOD CENTER
- VILLAGE & VILLAGE CENTER
- CROSSROADS COMMUNITY
- COMPACT RESIDENTIAL
- ETJ
- RURAL
- AGRICULTURE
- CONSERVATION
- PARK / PROTECTED LANDS



*Note: This map is a guide showing the intended future land use pattern using various land use areas. Land use areas (or 'place types') differ from zoning districts in that they generally define the community's expectations. Each can be translated into one or more zoning districts; however, only the provisions of the zoning ordinance are enforceable. Though each land use area is geographically delineated on the map, strict adherence to the Land Use and Conservation Plan in making land use decisions is not recommended. Instead, when making decisions about specific sites or contemplating new initiatives, decision makers are encouraged to use the map as a guide while taking into account economic, environmental, and social factors. Zoning parcels in a manner that is consistent with the Land Use and Conservation Plan is one of the most effective ways of implementing Plan Chatham and realizing the vision. Areas in municipalities are not fully represented. See town of Pittsboro, Town of Siler City, and Town of Goldston Land Use Plans for more details.*