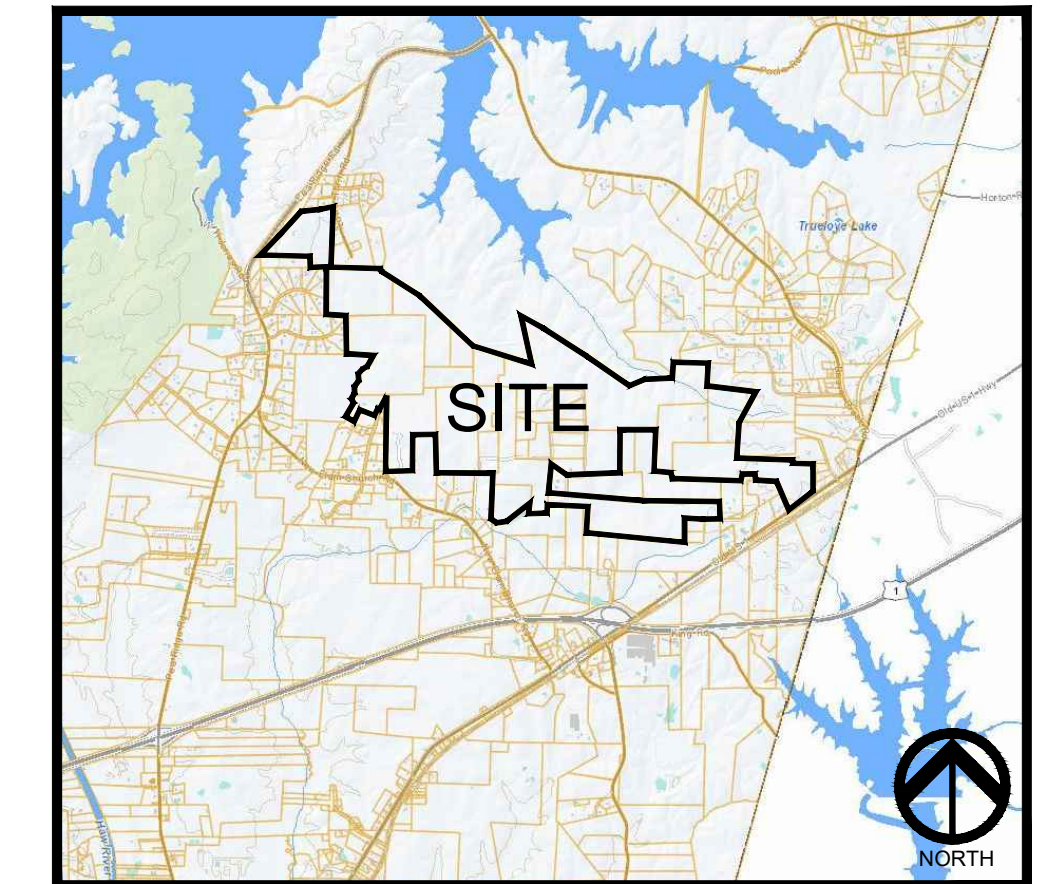


THE CONSERVANCY AT JORDAN LAKE

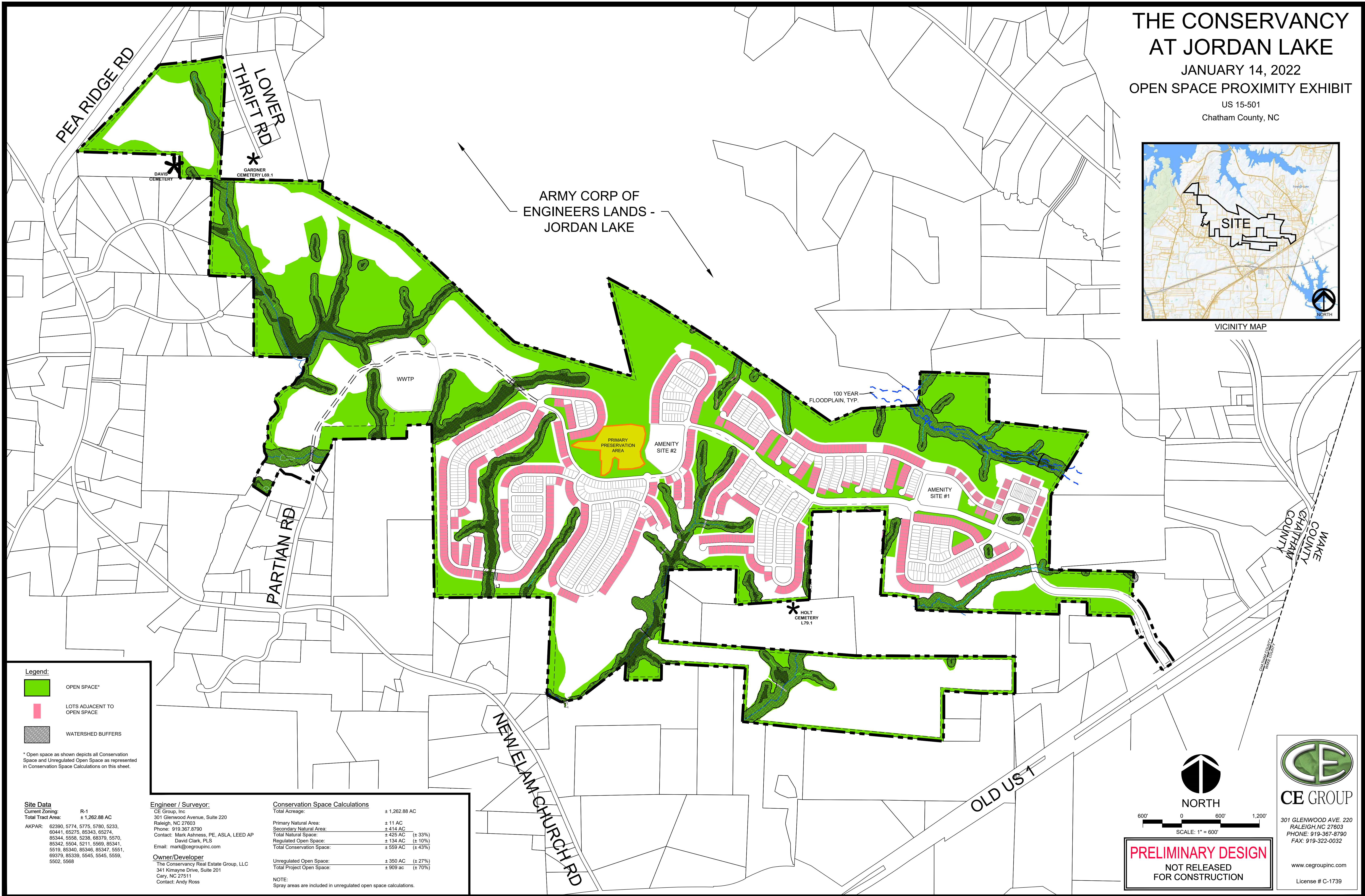
JANUARY 14, 2022
OPEN SPACE PROXIMITY EXHIBIT

US 15-501
Chatham County, NC



VICINITY MAP

ARMY CORP OF ENGINEERS LANDS - JORDAN LAKE



- Legend:**
- OPEN SPACE*
 - LOTS ADJACENT TO OPEN SPACE
 - WATERSHED BUFFERS

* Open space as shown depicts all Conservation Space and Unregulated Open Space as represented in Conservation Space Calculations on this sheet.

Site Data
Current Zoning: R-1
Total Tract Area: ± 1,262.88 AC
AKPAR: 62390, 5774, 5775, 5780, 5233, 60441, 65275, 85343, 65274, 85344, 5558, 5238, 68379, 5570, 85342, 5504, 5211, 5569, 85341, 5519, 85340, 85346, 85347, 5551, 69379, 85339, 5545, 5545, 5559, 5502, 5568

Engineer / Surveyor:
CE Group, Inc
301 Glenwood Avenue, Suite 220
Raleigh, NC 27603
Phone: 919.367.8790
Contact: Mark Ashness, PE, ASLA, LEED AP
David Clark, PLS
Email: mark@cegroupinc.com

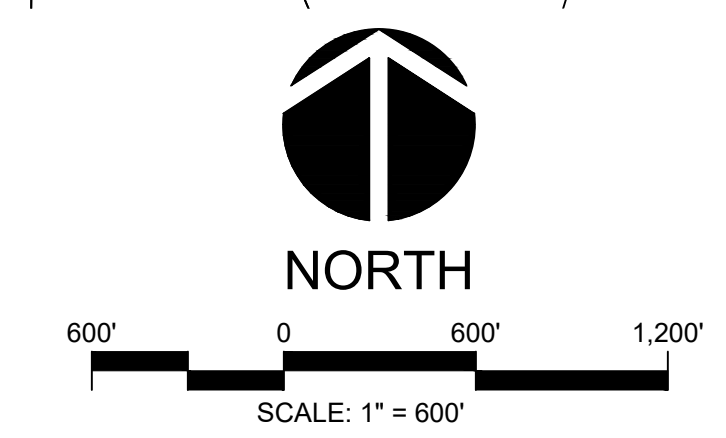
Owner/Developer
The Conservancy Real Estate Group, LLC
341 Kimayne Drive, Suite 201
Cary, NC 27511
Contact: Andy Ross

Conservation Space Calculations

Total Acreage:	± 1,262.88 AC
Primary Natural Area:	± 11 AC
Secondary Natural Area:	± 414 AC
Total Natural Space:	± 425 AC (± 33%)
Regulated Open Space:	± 134 AC (± 10%)
Total Conservation Space:	± 559 AC (± 43%)

Unregulated Open Space:	± 350 AC (± 27%)
Total Project Open Space:	± 909 ac (± 70%)

NOTE:
Spray areas are included in unregulated open space calculations.



PRELIMINARY DESIGN
NOT RELEASED FOR CONSTRUCTION

CE GROUP
301 GLENWOOD AVE. 220
RALEIGH, NC 27603
PHONE: 919-367-8790
FAX: 919-322-0032
www.cegroupinc.com
License # C-1739