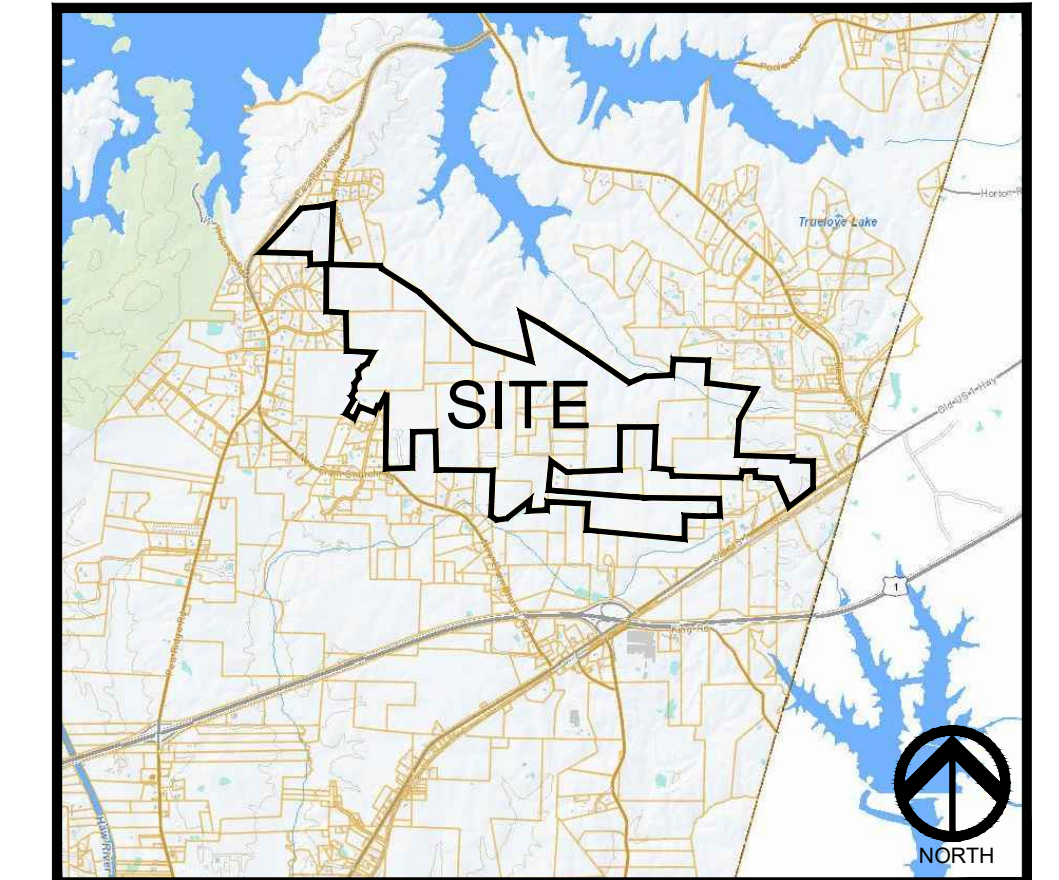
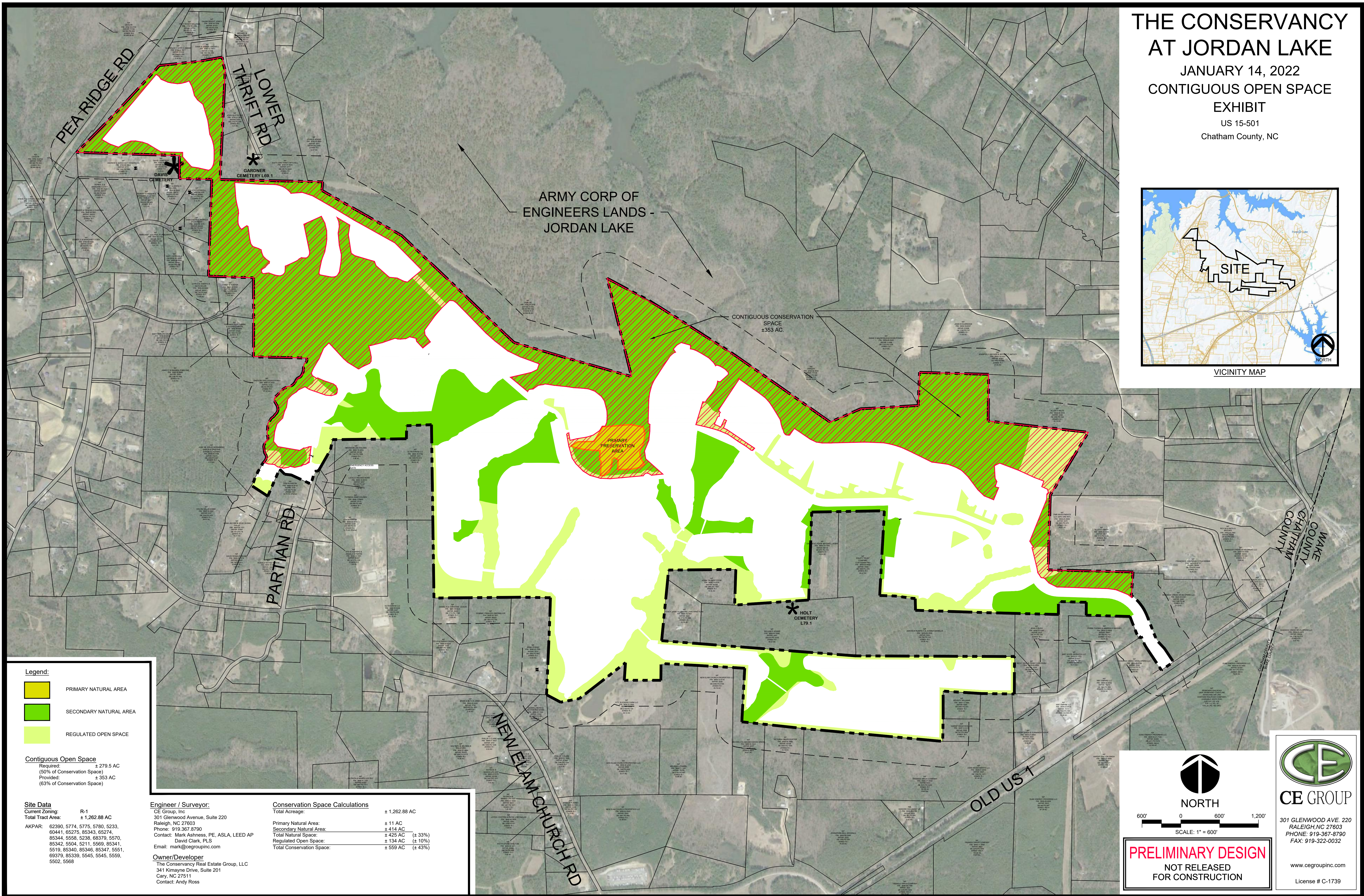


**THE CONSERVANCY
AT JORDAN LAKE**
JANUARY 14, 2022
CONTIGUOUS OPEN SPACE
EXHIBIT
US 15-501
Chatham County, NC



VICINITY MAP



ARMY CORP OF
ENGINEERS LANDS -
JORDAN LAKE

CONTIGUOUS CONSERVATION
SPACE
±353 AC.

PRIMARY
PRESERVATION
AREA

HOLT
CEMETERY
L79.1

Legend:

- PRIMARY NATURAL AREA
- SECONDARY NATURAL AREA
- REGULATED OPEN SPACE

Contiguous Open Space
Required: ± 279.5 AC
(50% of Conservation Space)
Provided: ± 353 AC
(63% of Conservation Space)

Site Data
Current Zoning: R-1
Total Tract Area: ± 1,262.88 AC
AKPAR: 62390, 5774, 5775, 5780, 5233, 60441, 65275, 85343, 65274, 85344, 5558, 5238, 68379, 5570, 85342, 5504, 5211, 5569, 85341, 5519, 85340, 85346, 85347, 5551, 69379, 85339, 5545, 5545, 5559, 5502, 5568

Engineer / Surveyor:
CE Group, Inc
301 Glenwood Avenue, Suite 220
Raleigh, NC 27603
Phone: 919.367.9790
Contact: Mark Ashness, PE, ASLA, LEED AP
David Clark, PLS
Email: mark@cegroupinc.com

Owner/Developer
The Conservancy Real Estate Group, LLC
341 Kimayne Drive, Suite 201
Cary, NC 27511
Contact: Andy Ross

Conservation Space Calculations

Total Acreage:	± 1,262.88 AC
Primary Natural Area:	± 11 AC
Secondary Natural Area:	± 414 AC
Total Natural Space:	± 425 AC (± 33%)
Regulated Open Space:	± 134 AC (± 10%)
Total Conservation Space:	± 559 AC (± 43%)

NORTH
 600' 0 600' 1,200'
 SCALE: 1" = 600'

PRELIMINARY DESIGN
 NOT RELEASED
 FOR CONSTRUCTION

CE GROUP
 301 GLENWOOD AVE. 220
 RALEIGH, NC 27603
 PHONE: 919-367-8790
 FAX: 919-322-0032
 www.cegroupinc.com
 License # C-1739