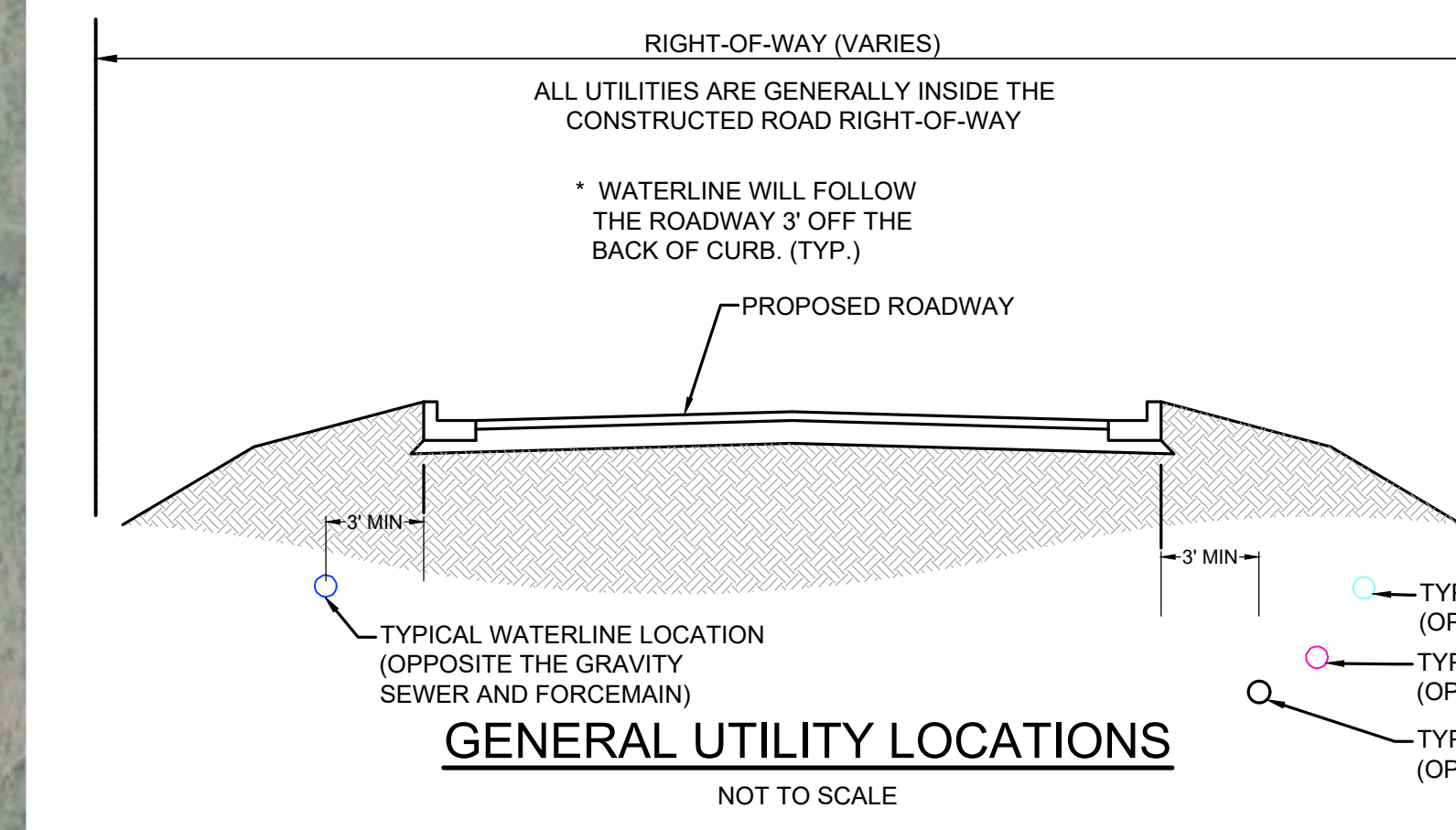


THE CONSERVANCY AT JORDAN LAKE

NOVEMBER 19, 2021
FIRST PLAT SUBMITTAL

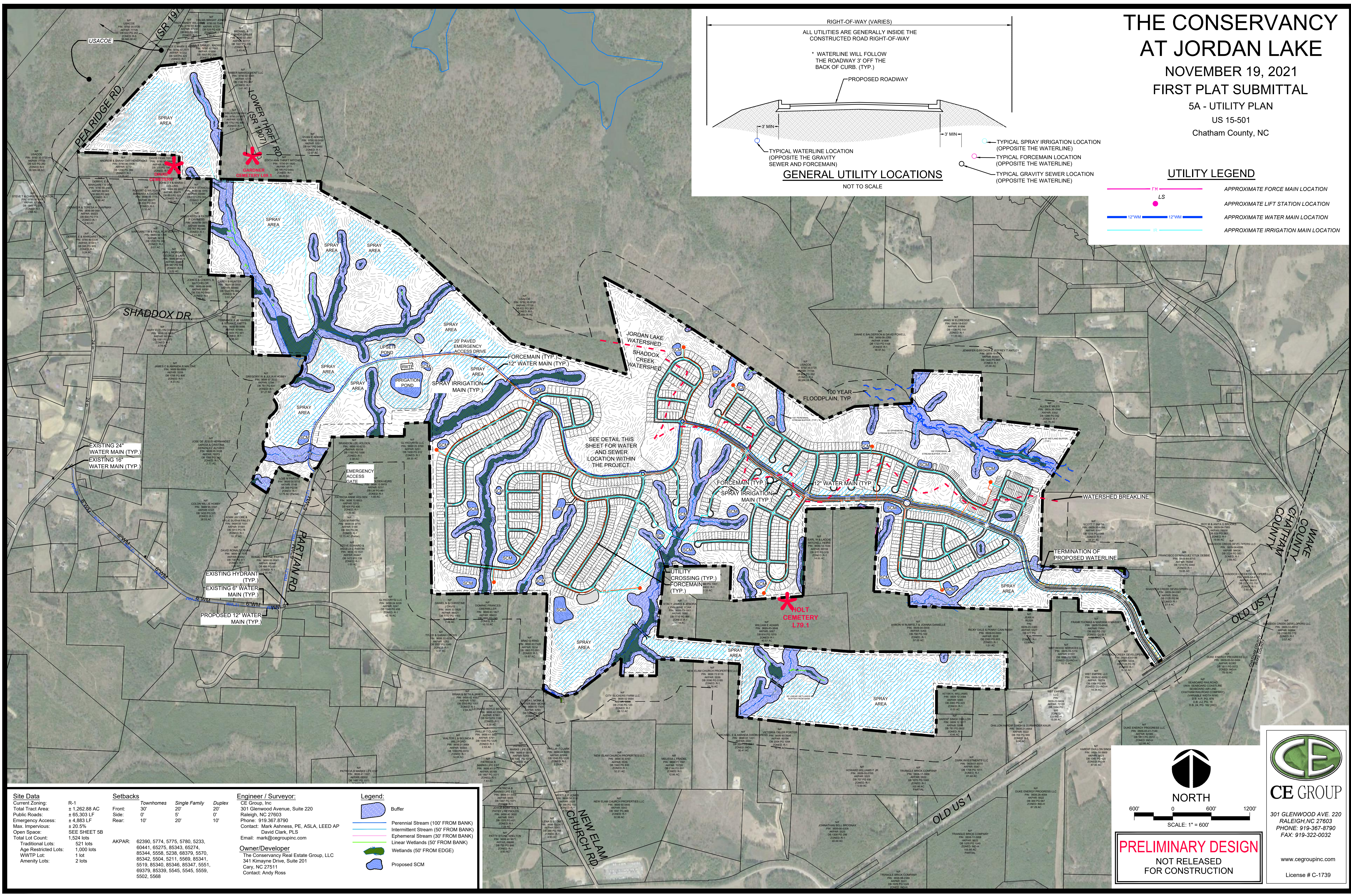
5A - UTILITY PLAN
US 15-501
Chatham County, NC



GENERAL UTILITY LOCATIONS
NOT TO SCALE

UTILITY LEGEND

- APPROXIMATE FORCE MAIN LOCATION
- APPROXIMATE LIFT STATION LOCATION
- APPROXIMATE WATER MAIN LOCATION
- APPROXIMATE IRRIGATION MAIN LOCATION



Site Data	
Current Zoning:	R-1
Total Tract Area:	± 1,262.88 AC
Public Roads:	± 65,303 LF
Emergency Access:	± 4,883 LF
Max. Impervious:	± 20.5%
Open Space:	SEE SHEET 5B
Total Lot Count:	1,524 lots
Traditional Lots:	521 lots
Age Restricted Lots:	1,000 lots
WWTP Lot:	1 lot
Amenity Lots:	2 lots

Setbacks	
Front:	30'
Side:	0'
Rear:	10'

Engineer / Surveyor:	
CE Group, Inc.	301 Glenwood Avenue, Suite 220 Raleigh, NC 27603 Phone: 919-367-8790 Contact: Mark Ashness, PE, ASLA, LEED AP David Clark, PLS Email: mark@cegroupinc.com
Owner/Developer:	
The Conservancy Real Estate Group, LLC	341 Kimaayne Drive, Suite 201 Cary, NC 27511 Contact: Andy Ross

Legend:	
	Buffer
	Perennial Stream (100' FROM BANK)
	Intermittent Stream (50' FROM BANK)
	Ephemeral Stream (30' FROM BANK)
	Linear Wetlands (50' FROM BANK)
	Wetlands (50' FROM EDGE)
	Proposed SCM

NORTH

600' 0 600' 1200'

SCALE: 1" = 600'

PRELIMINARY DESIGN

NOT RELEASED FOR CONSTRUCTION

CE GROUP

301 GLENWOOD AVE. 220
RALEIGH, NC 27603
PHONE: 919-367-8790
FAX: 919-322-0032

www.cegroupinc.com
License # C-1739