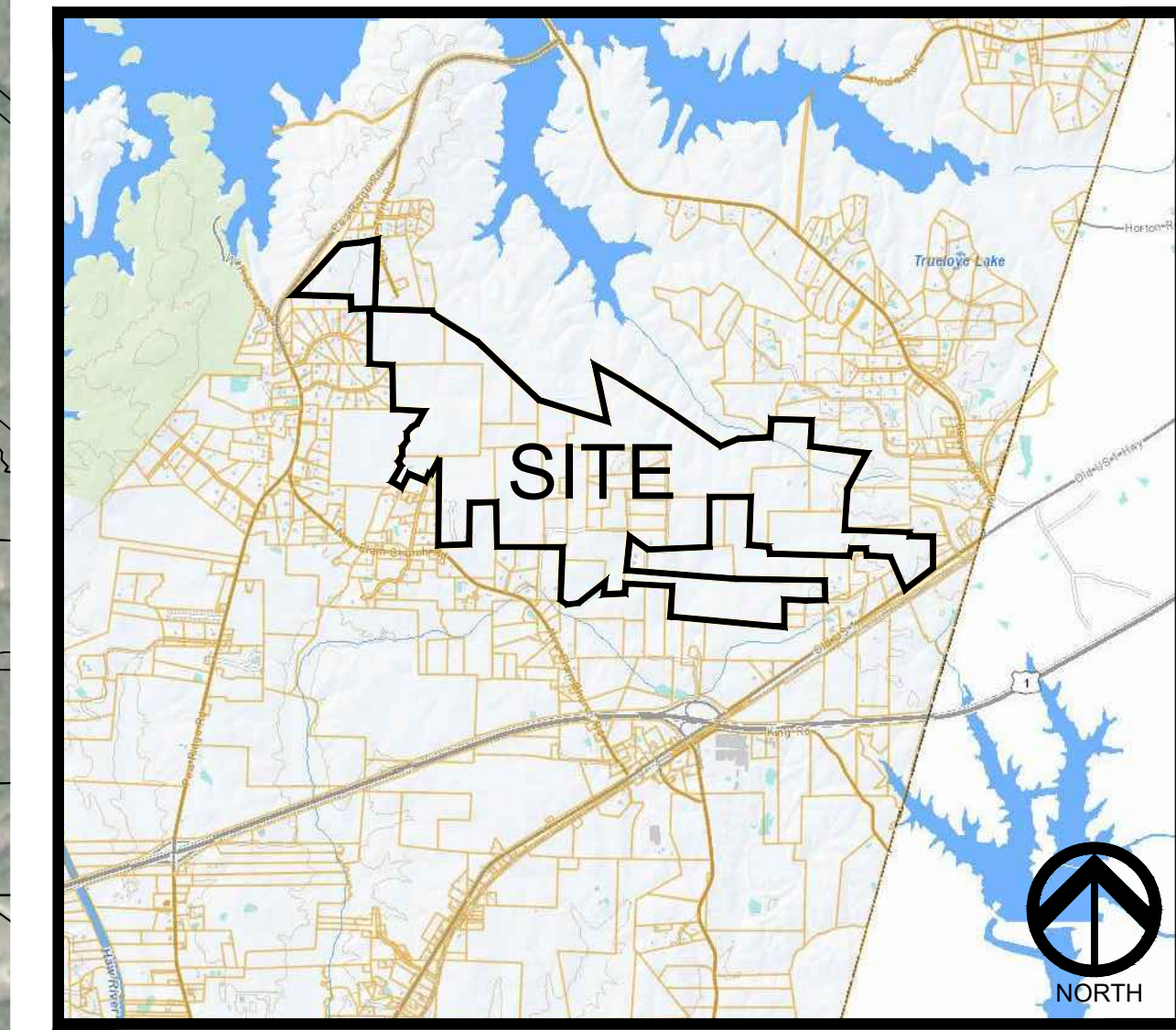


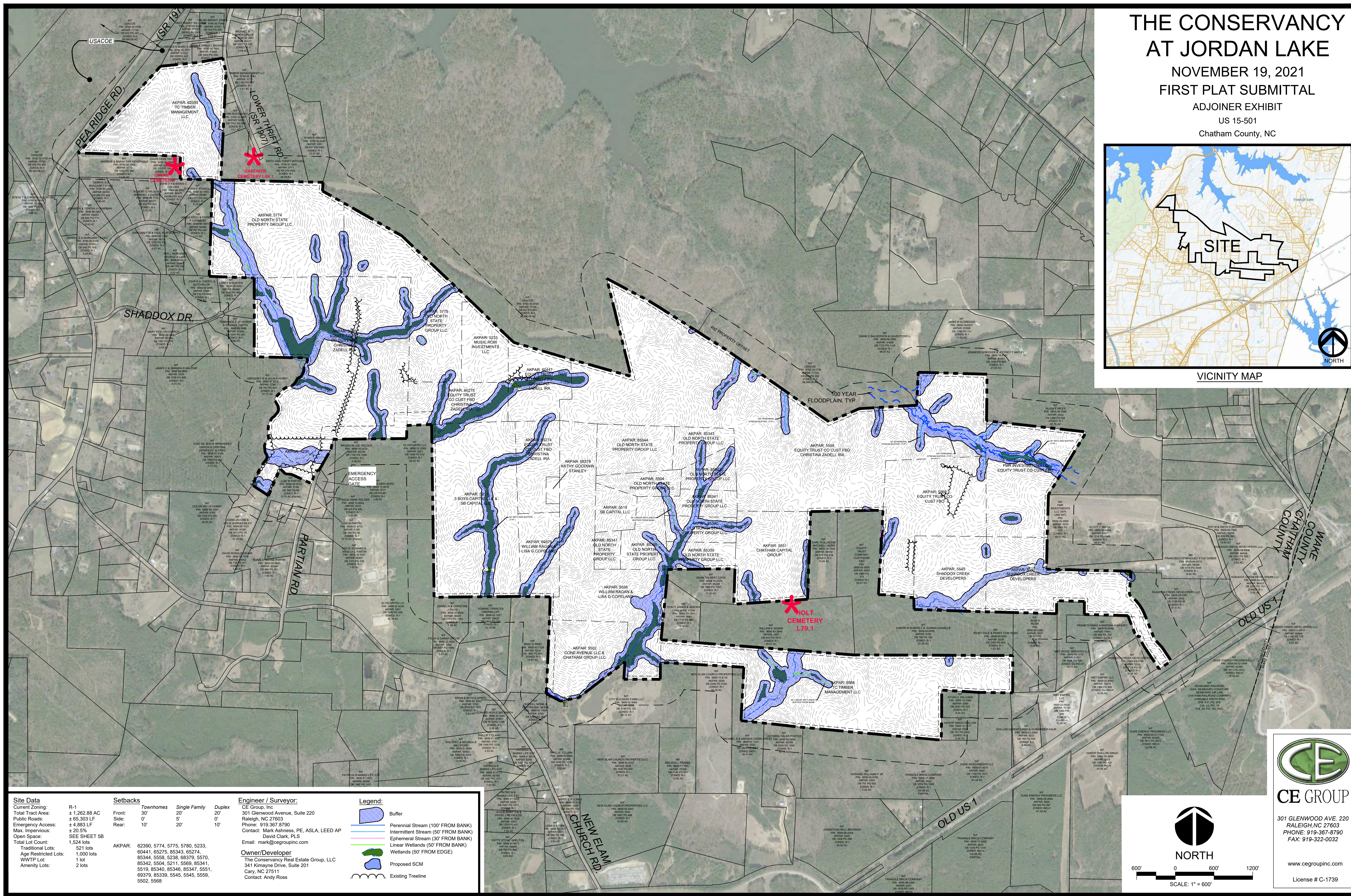
# THE CONSERVANCY AT JORDAN LAKE

NOVEMBER 19, 2021  
FIRST PLAT SUBMITTAL

ADJOINER EXHIBIT  
US 15-501  
Chatham County, NC



VICINITY MAP



**Site Data**

Current Zoning: R-1  
Total Tract Area: ± 1,262.88 AC  
Public Roads: ± 65,303 LF  
Emergency Access: ± 4,883 LF  
Max. Impervious: ± 20.5%  
Open Space: SEE SHEET 5B  
Total Lot Count: 1,524 lots  
Traditional Lots: 521 lots  
Age Restricted Lots: 1,000 lots  
WWTP Lot: 1 lot  
Amenity Lots: 2 lots

**Setbacks**

Townhomes	Single Family	Duplex
Front: 30'	20'	20'
Side: 0'	5'	0'
Rear: 10'	20'	10'

**AKPAR:** 62390, 5774, 5775, 5780, 5233, 60441, 65275, 85343, 65274, 85344, 5558, 5238, 86379, 5570, 85342, 5504, 5211, 5569, 85341, 5519, 85340, 85346, 85347, 5551, 69379, 85339, 5545, 5545, 5559, 5502, 5568

**Engineer / Surveyor:**  
CE Group, Inc.  
301 Glenwood Avenue, Suite 220  
Raleigh, NC 27603  
Phone: 919-367-8790  
Contact: Mark Ashness, PE, ASLA, LEED AP  
David Clark, PLS  
Email: mark@cegroupinc.com

**Owner/Developer:**  
The Conservancy Real Estate Group, LLC  
341 Kinyame Drive, Suite 201  
Cary, NC 27511  
Contact: Andy Ross

**Legend:**

- Buffer
- Perennial Stream (100' FROM BANK)
- Intermittent Stream (50' FROM BANK)
- Ephemeral Stream (30' FROM BANK)
- Linear Wetlands (50' FROM BANK)
- Wetlands (50' FROM EDGE)
- Proposed SCM
- Existing Treeline

**CE GROUP**

301 GLENWOOD AVE. 220  
RALEIGH, NC 27603  
PHONE: 919-367-8790  
FAX: 919-322-0032

www.cegroupinc.com  
License # C-1739

SCALE: 1" = 600'