

pyewacket subdivision

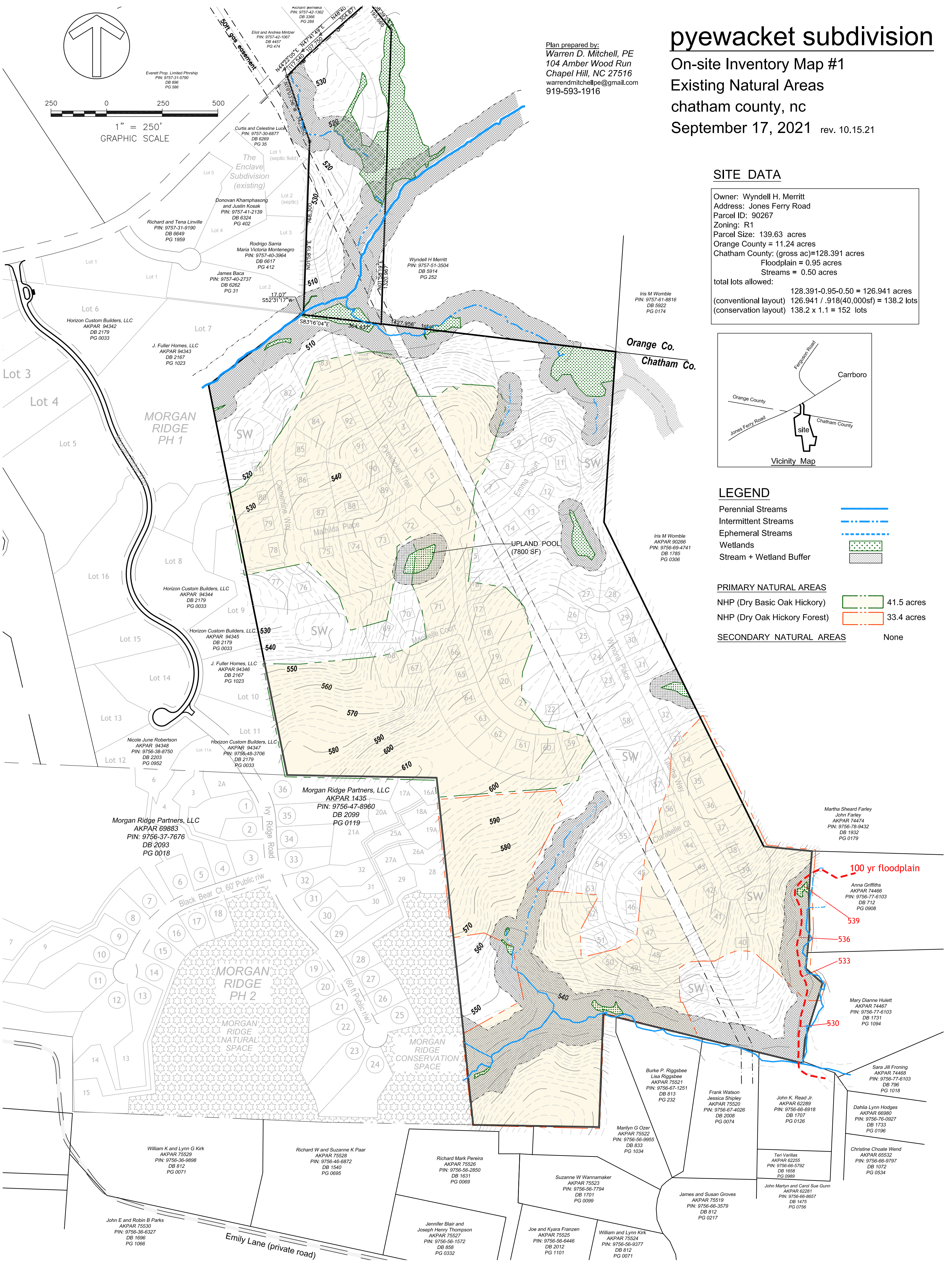
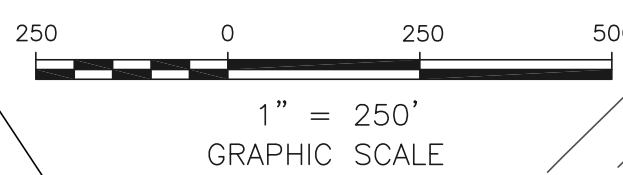
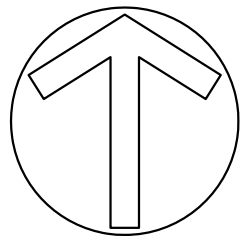
On-site Inventory Map #1

Existing Natural Areas

chatham county, nc

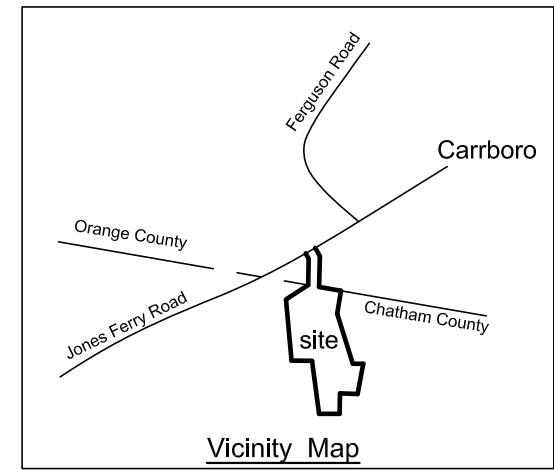
September 17, 2021 rev. 10.15.21

Plan prepared by:
 Warren D. Mitchell, PE
 104 Amber Wood Run
 Chapel Hill, NC 27516
 warrenmitchellpe@gmail.com
 919-593-1916



SITE DATA

Owner: Wyndell H. Merritt
 Address: Jones Ferry Road
 Parcel ID: 90267
 Zoning: R1
 Parcel Size: 139.63 acres
 Orange County = 11.24 acres
 Chatham County: (gross ac)=128.391 acres
 Floodplain = 0.95 acres
 Streams = 0.50 acres
 total lots allowed:
 128.391-0.95-0.50 = 126.941 acres
 (conventional layout) 126.941 / .918(40,000sf) = 138.2 lots
 (conservation layout) 138.2 x 1.1 = 152 lots



LEGEND

- Perennial Streams ———
- Intermittent Streams - - - - -
- Ephemeral Streams - · - · -
- Wetlands
- Stream + Wetland Buffer

- PRIMARY NATURAL AREAS**
- NHP (Dry Basic Oak Hickory) 41.5 acres
 - NHP (Dry Oak Hickory Forest) 33.4 acres
- SECONDARY NATURAL AREAS** None

Martha Sheard Farley
 John Farley
 AKPAR 74474
 PIN: 9756-78-9432
 DB 1932
 PG 0179

Anna Griffiths
 AKPAR 74466
 PIN: 9756-77-6103
 DB 712
 PG 0908

Mary Dianne Hulett
 AKPAR 74467
 PIN: 9756-77-6103
 DB 1731
 PG 1094

Sara Jill Froming
 AKPAR 74468
 PIN: 9756-77-6103
 DB 796
 PG 1018

Dahlia Lynn Hodges
 AKPAR 69880
 PIN: 9756-76-9927
 DB 1733
 PG 0196

Christine Choate Wend
 AKPAR 65532
 PIN: 9756-66-9797
 DB 1072
 PG 0534

Burke P. Riggsbee
 Lisa Riggsbee
 AKPAR 75521
 PIN: 9756-67-1251
 DB 813
 PG 232

Frank Watson
 Jessica Shipley
 AKPAR 75520
 PIN: 9756-67-4026
 DB 2008
 PG 0074

John K. Road, Jr.
 AKPAR 62288
 PIN: 9756-66-6918
 DB 1707
 PG 0126

Teri Vanillas
 AKPAR 62255
 PIN: 9756-66-5792
 DB 1658
 PG 0989

John Marilyn and Carol Sue Gunn
 AKPAR 62281
 PIN: 9756-66-8657
 DB 1475
 PG 0756

Marilyn G. Ozer
 AKPAR 75522
 PIN: 9756-56-9955
 DB 833
 PG 1034

Suzanne W. Wannemaker
 AKPAR 75523
 PIN: 9756-56-7794
 DB 1701
 PG 0099

James and Susan Groves
 AKPAR 75519
 PIN: 9756-66-3579
 DB 812
 PG 0217

Joe and Kyara Franzen
 AKPAR 75525
 PIN: 9756-56-6446
 DB 2012
 PG 1101

William and Lynn Kirk
 AKPAR 75524
 PIN: 9756-56-9377
 DB 812
 PG 0071

Richard Mark Pereira
 AKPAR 75526
 PIN: 9756-56-2850
 DB 1631
 PG 0069

Jennifer Blair and Joseph Henry Thompson
 AKPAR 75527
 PIN: 9756-56-1572
 DB 858
 PG 0332

Richard W. and Suzanne K. Paar
 AKPAR 75528
 PIN: 9756-46-6872
 DB 1540
 PG 0695

William K. and Lynn G. Kirk
 AKPAR 75529
 PIN: 9756-36-9898
 DB 812
 PG 0071

John E. and Robin B. Parks
 AKPAR 75530
 PIN: 9756-36-6327
 DB 1696
 PG 1066

Morgan Ridge Partners, LLC
 AKPAR 69883
 PIN: 9756-37-7676
 DB 2093
 PG 0018

Morgan Ridge Partners, LLC
 AKPAR 1435
 PIN: 9756-47-8960
 DB 2099
 PG 0119

Horizon Custom Builders, LLC
 AKPAR 94347
 PIN: 9756-48-3706
 DB 2179
 PG 0033

Horizon Custom Builders, LLC
 AKPAR 94346
 PIN: 9756-48-3706
 DB 2179
 PG 0033

Horizon Custom Builders, LLC
 AKPAR 94344
 PIN: 9756-48-3706
 DB 2179
 PG 0033

Horizon Custom Builders, LLC
 AKPAR 94342
 PIN: 9756-48-3706
 DB 2179
 PG 0033

J. Fuller Homes, LLC
 AKPAR 94343
 PIN: 9756-48-3706
 DB 2167
 PG 1023

James Baca
 PIN: 9757-40-2737
 DB 6262
 PG 31

Rodrigo Sarría
 Maria Victoria Montenegro
 PIN: 9757-40-3864
 DB 6617
 PG 412

Donovan Khamphasong
 and Justin Kosak
 PIN: 9757-41-2139
 DB 6324
 PG 402

Richard and Tena Liville
 PIN: 9757-31-9190
 DB 6649
 PG 1959

Curtis and Celestine Luck
 PIN: 9757-30-8877
 DB 6269
 PG 35

Eliot and Andrea Mintzer
 PIN: 9757-42-1067
 DB 4467
 PG 474

Robinson Semena
 PIN: 9757-43-1382
 DB 3366
 PG 289

Emily Lane (private road)

pyewacket subdivision

On-site Inventory Map #2

proposed natural space

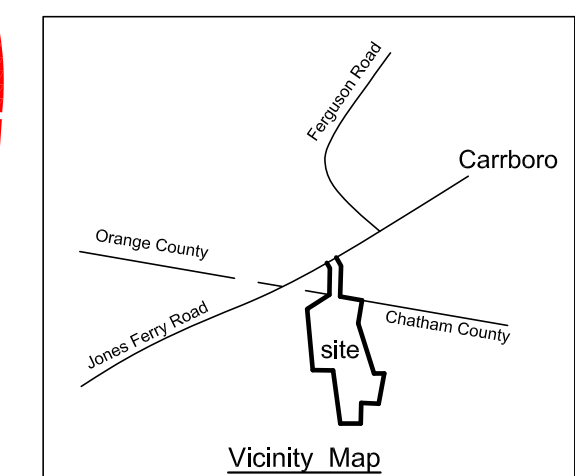
chatham county, nc

July 12, 2021

revised Sep. 17, 2021; revised Oct 15, 2021

SITE DATA

Owner: Wyndell H. Merritt
 Address: Jones Ferry Road
 Parcel ID: 90267
 Zoning: R1
 Parcel Size: 139.63 acres
 Orange County = 11.24 acres
 Chatham County: (gross ac)=128.391 acres
 Floodplain = 0.95 acres
 Streams = 0.50 acres
 total lots allowed:
 128.391-0.95-0.50 = 126.941 acres
 (conventional layout) 126.941 / .918(40,000sf) = 138.2 lots
 (conservation layout) 138.2 x 1.1 = 152 lots

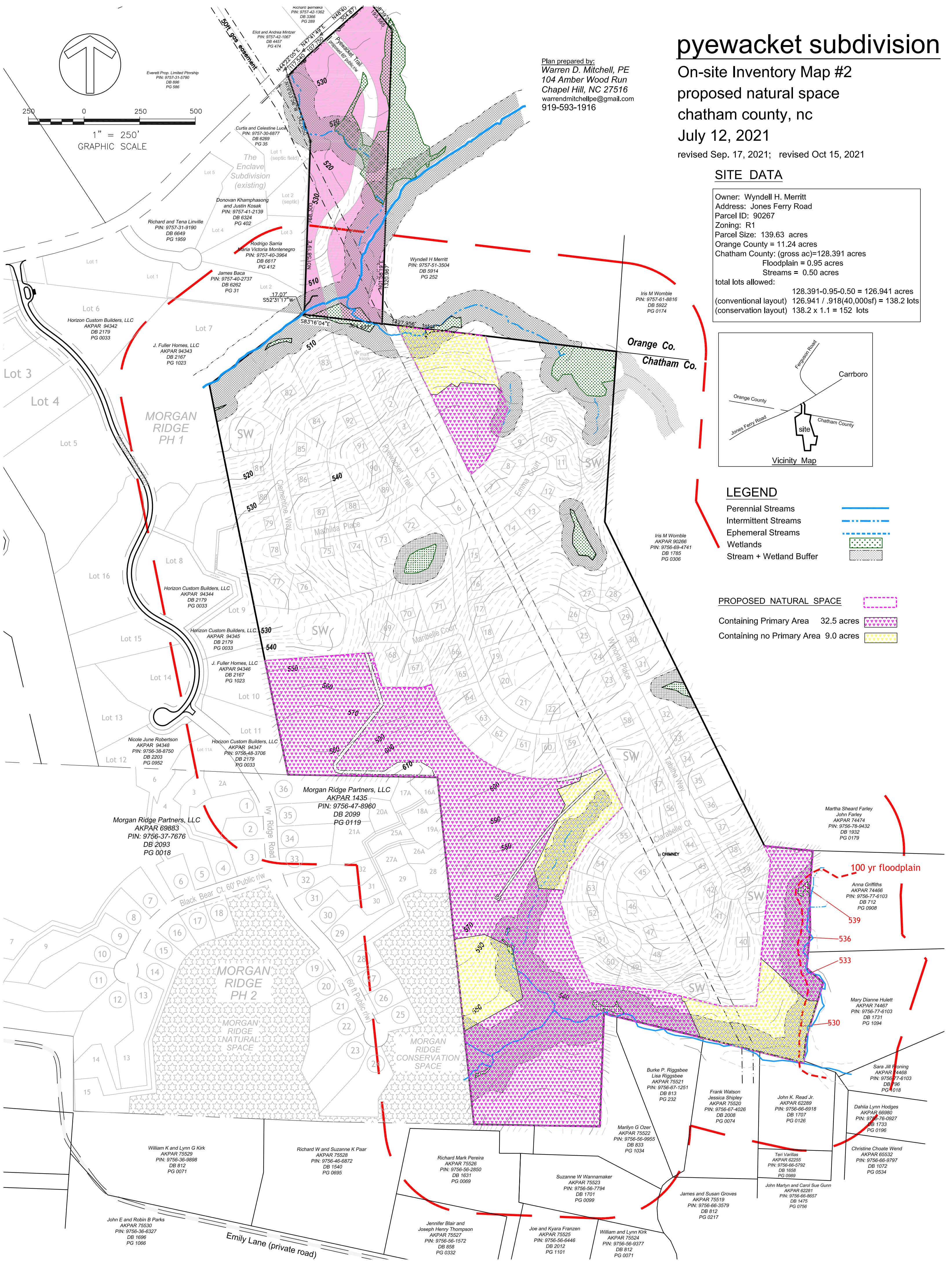


LEGEND

- Perennial Streams
- Intermittent Streams
- Ephemeral Streams
- Wetlands
- Stream + Wetland Buffer

PROPOSED NATURAL SPACE

- Containing Primary Area 32.5 acres
- Containing no Primary Area 9.0 acres



Plan prepared by:
 Warren D. Mitchell, PE
 104 Amber Wood Run
 Chapel Hill, NC 27516
 warrenmitchellpe@gmail.com
 919-593-1916

Orange Co.
 Chatham Co.

100 yr floodplain

Morgan Ridge Partners, LLC
 AKPAR 69883
 PIN: 9756-37-7676
 DB 2093
 PG 0018

Morgan Ridge Partners, LLC
 AKPAR 1435
 PIN: 9756-47-8960
 DB 2099
 PG 0119

Martha Sheard Farley
 John Farley
 AKPAR 74474
 PIN: 9756-78-9432
 DB 1932
 PG 0179

Anna Griffiths
 AKPAR 74466
 PIN: 9756-77-6103
 DB 712
 PG 0988

Mary Dianne Hulett
 AKPAR 74467
 PIN: 9756-77-6103
 DB 1731
 PG 1094

Sara Jill Floning
 AKPAR 74468
 PIN: 9756-77-6103
 DB 796
 PG 0118

Dahlia Lynn Hodges
 AKPAR 66980
 PIN: 9756-76-0927
 DB 1733
 PG 0196

Christine Choate Wend
 AKPAR 65532
 PIN: 9756-66-9797
 DB 1072
 PG 0534

Burke P. Riggsbee
 Lisa Riggsbee
 AKPAR 75521
 PIN: 9756-67-1251
 DB 613
 PG 232

Frank Watson
 Jessica Shipley
 AKPAR 75520
 PIN: 9756-67-4026
 DB 2008
 PG 0074

John K. Read Jr.
 AKPAR 62289
 PIN: 9756-66-6918
 DB 1707
 PG 0126

Teri Vanilas
 AKPAR 62285
 PIN: 9756-66-5792
 DB 1658
 PG 0989

John Maryn and Carol Sue Gunn
 AKPAR 62281
 PIN: 9756-66-8657
 DB 1475
 PG 0796

James and Susan Groves
 AKPAR 75519
 PIN: 9756-66-3579
 DB 812
 PG 0217

Joe and Kyara Franzen
 AKPAR 75525
 PIN: 9756-56-6446
 DB 2012
 PG 1101

William and Lynn Kirk
 AKPAR 75524
 PIN: 9756-56-9377
 DB 812
 PG 0071

Jennifer Blair and
 Joseph Henry Thompson
 AKPAR 75527
 PIN: 9756-56-1572
 DB 858
 PG 0332

Richard Mark Pereira
 AKPAR 75526
 PIN: 9756-56-2850
 DB 1631
 PG 0069

Richard W and Suzanne K Paar
 AKPAR 75528
 PIN: 9756-46-6872
 DB 1540
 PG 0695

William K and Lynn G Kirk
 AKPAR 75529
 PIN: 9756-36-9898
 DB 812
 PG 0071

John E and Robin B Parks
 AKPAR 75530
 PIN: 9756-36-6327
 DB 1696
 PG 1066

Emily Lane (private road)

pyewacket subdivision

On-site Inventory Map #3

proposed natural space w/ septic areas
chatham county, nc

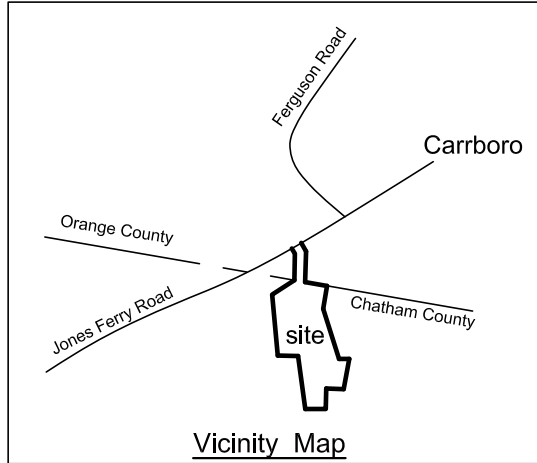
July 12, 2021

revised Sep. 17, 2021; revised 10.15.21

Plan prepared by:
Warren D. Mitchell, PE
104 Amber Wood Run
Chapel Hill, NC 27516
warrendmitchellpe@gmail.com
919-593-1916

SITE DATA

Owner: Wyndell H. Merritt
Address: Jones Ferry Road
Parcel ID: 90267
Zoning: R1
Parcel Size: 139.63 acres
Orange County = 11.24 acres
Chatham County: (gross ac)=128.391 acres
Floodplain = 0.95 acres
Streams = 0.50 acres
total lots allowed:
128.391-0.95-0.50 = 126.941 acres
(conventional layout) 126.941 / .918(40,000sf) = 138.2 lots
(conservation layout) 138.2 x 1.1 = 152 lots

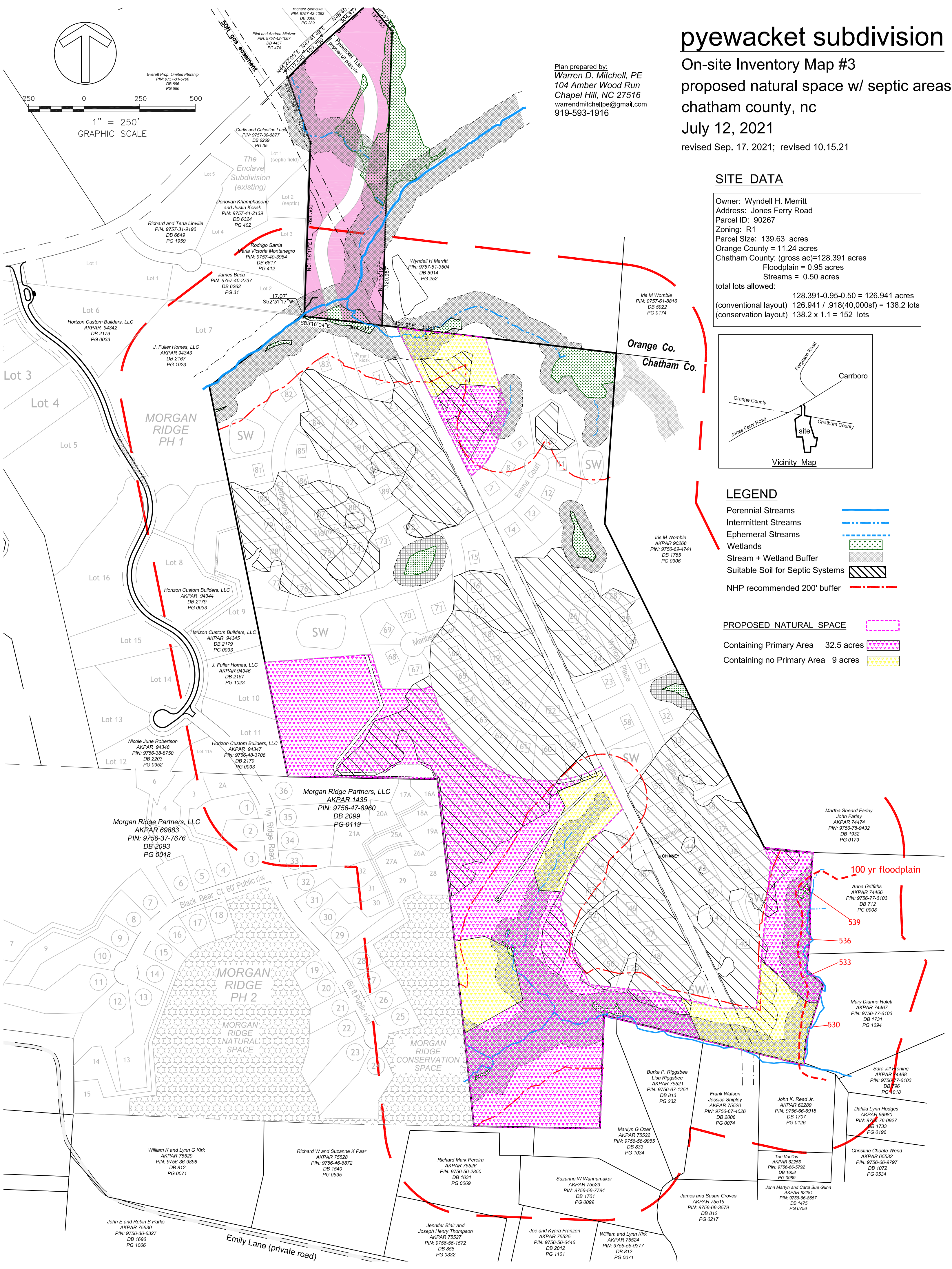
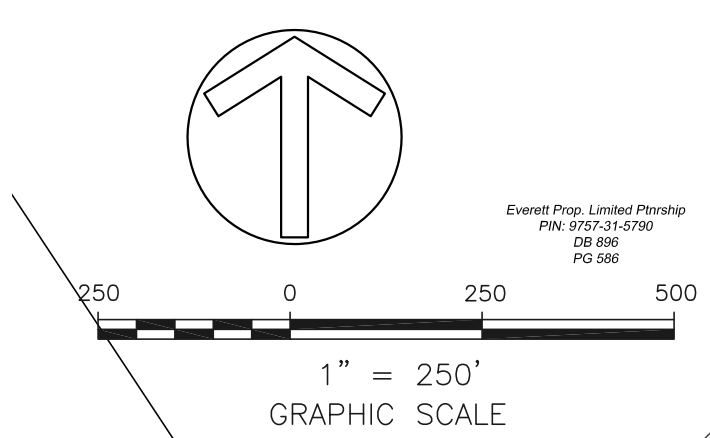


LEGEND

- Perennial Streams
- Intermittent Streams
- Ephemeral Streams
- Wetlands
- Stream + Wetland Buffer
- Suitable Soil for Septic Systems
- NHP recommended 200' buffer

PROPOSED NATURAL SPACE

- Containing Primary Area 32.5 acres
- Containing no Primary Area 9 acres



100 yr floodplain

- 539
- 536
- 533
- 530

Morgan Ridge Partners, LLC
AKPAR 69883
PIN: 9756-37-7676
DB 2093
PG 0018

Morgan Ridge Partners, LLC
AKPAR 1435
PIN: 9756-47-8960
DB 2099
PG 0119

William K and Lynn G Kirk
AKPAR 75529
PIN: 9756-36-9898
DB 812
PG 0071

Richard W and Suzanne K Paar
AKPAR 75528
PIN: 9756-46-6872
DB 1540
PG 0695

Richard Mark Pereira
AKPAR 75526
PIN: 9756-56-2850
DB 1631
PG 0069

Burke P. Riggsbee
AKPAR 75521
PIN: 9756-67-1251
DB 619
PG 232

John K. Read Jr.
AKPAR 62289
PIN: 9756-66-6918
DB 1707
PG 0126

Dahlia Lynn Hodges
AKPAR 66980
PIN: 9756-76-0927
DB 1733
PG 0196

John E and Robin B Parks
AKPAR 75530
PIN: 9756-36-6327
DB 1696
PG 1066

Jennifer Blair and Joseph Henry Thompson
AKPAR 75527
PIN: 9756-56-1572
DB 858
PG 0332

Joe and Kyara Franzen
AKPAR 75525
PIN: 9756-56-6446
DB 2012
PG 1101

James and Susan Groves
AKPAR 75519
PIN: 9756-66-3579
DB 812
PG 0217

Christine Choate Wend
AKPAR 65532
PIN: 9756-66-9797
DB 1072
PG 0534

Emily Lane (private road)