

VICKERS VILLAGE

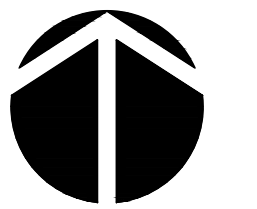
AUGUST 20, 2021
FIRST PLAT SUBMITTAL
PRELIMINARY GRADING PLAN
US 15-501
Chatham County, NC



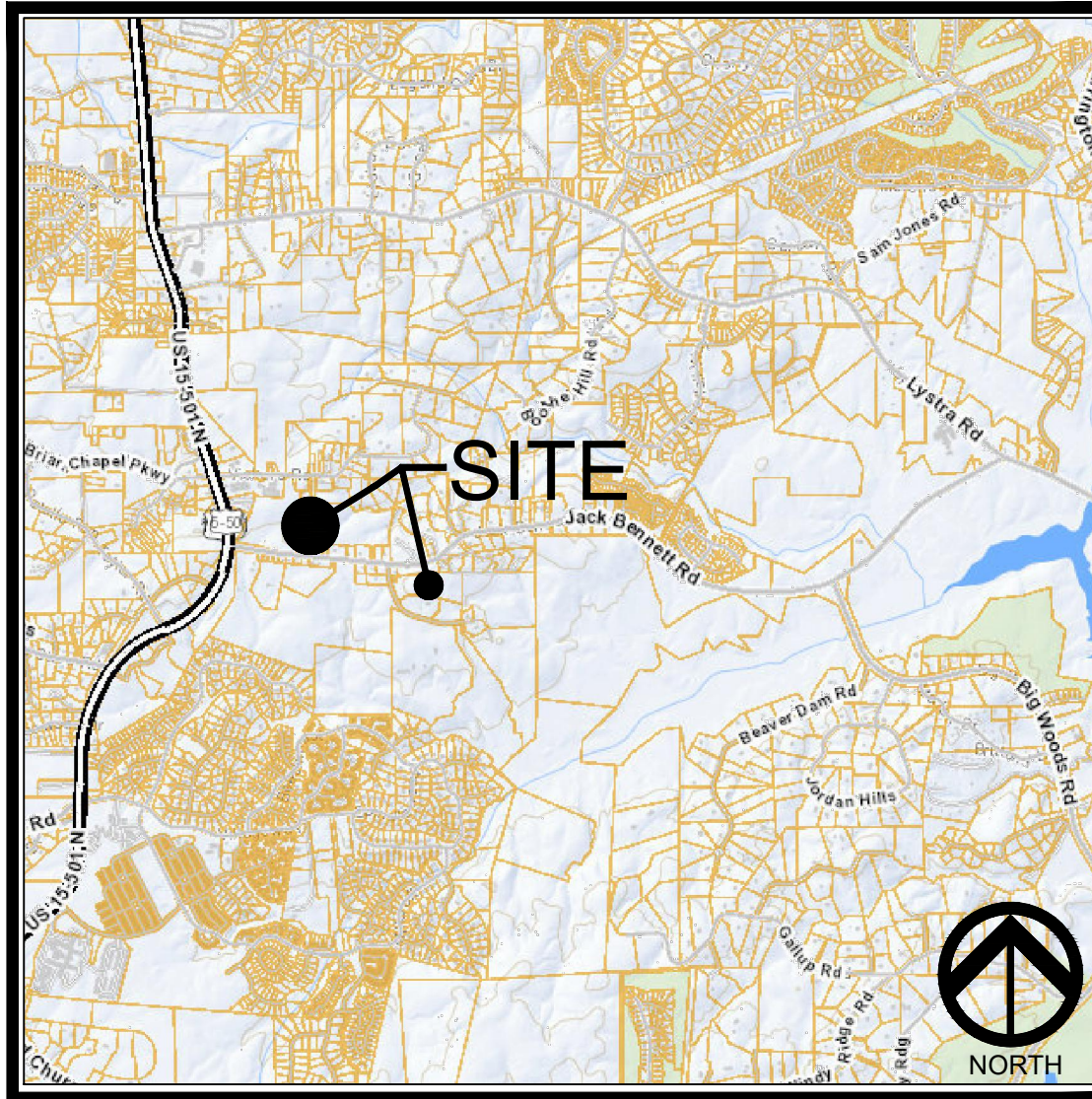
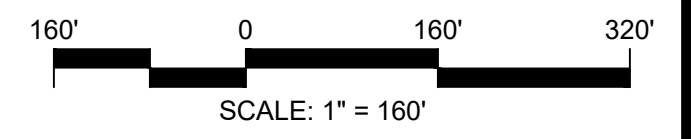
LEGEND

- PRELIMINARY CUT AREA (± 18.5 AC)
- PRELIMINARY FILL AREA (± 18.5 AC)
- NO SUBSTANTIAL GRADING BUT DISTURBANCE (± 30.5 AC)

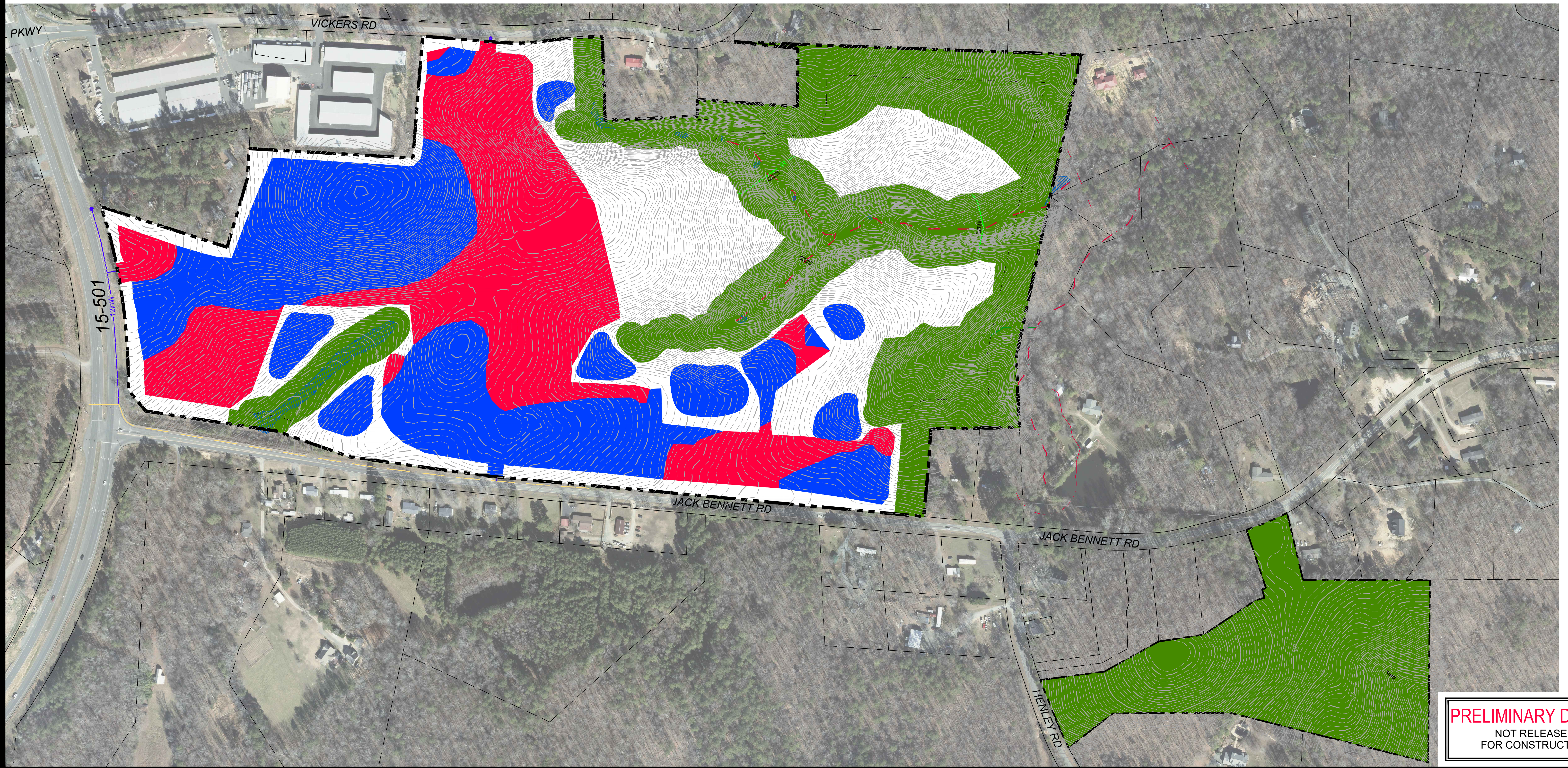
TOTAL ACREAGE:	101.8 AC
TOTAL DISTURBANCE:	± 67.5 AC
ESTIMATED EARTHWORK:	±250,000 CY EARTH MOVED



NORTH



VICINITY MAP



PRELIMINARY DESIGN
NOT RELEASED
FOR CONSTRUCTION