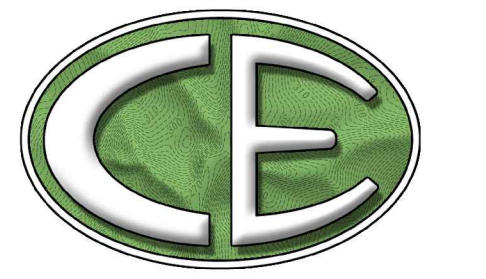
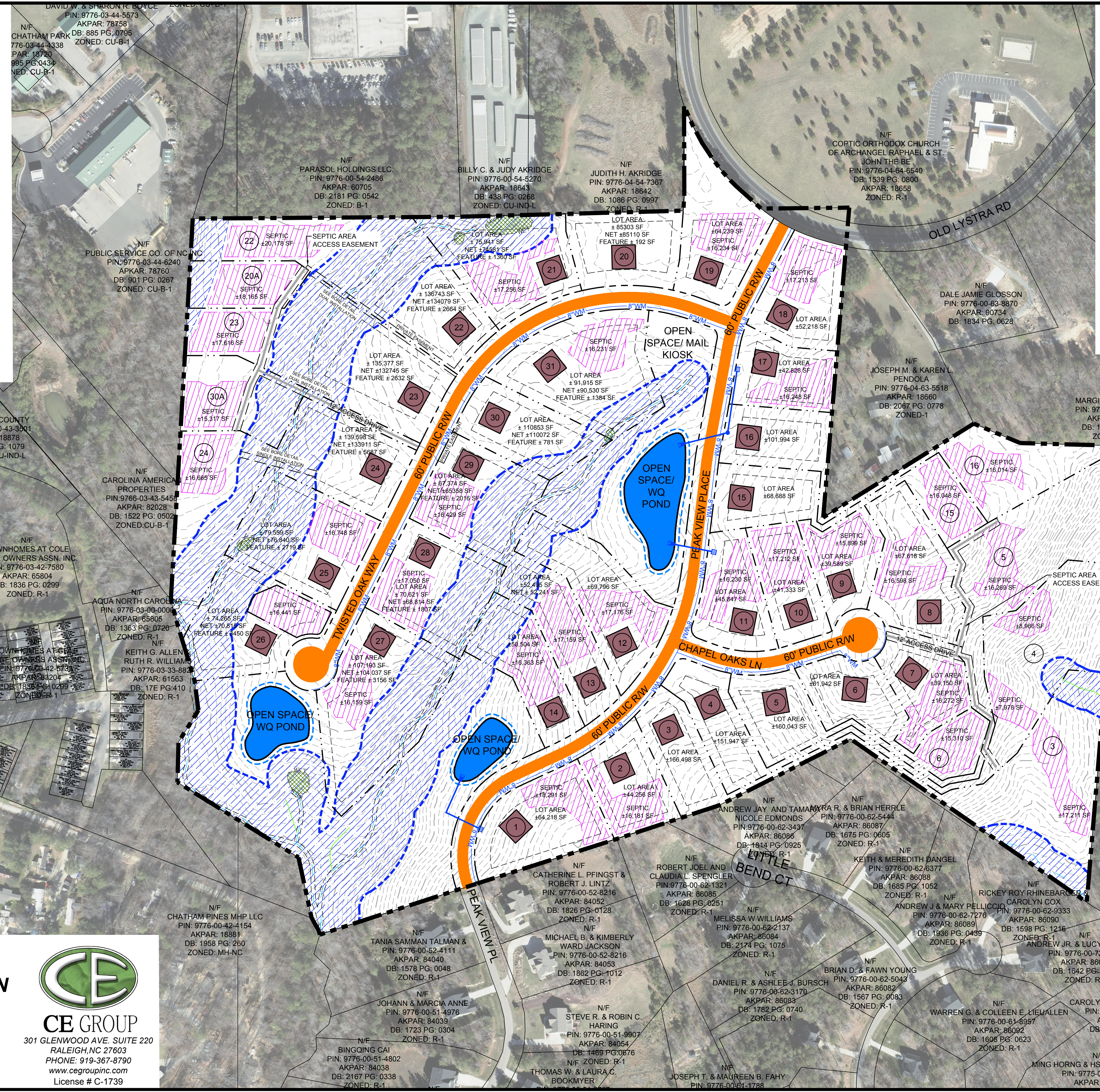


CHAPEL OAKS SUBDIVISION
FIRST PLAT
CHATHAM COUNTY, NC
AUGUST 20, 2021



CE GROUP
 301 GLENWOOD AVE., SUITE 220
 RALEIGH, NC 27603
 PHONE: 919-367-8790
 www.cegroupinc.com
 License # C-1739



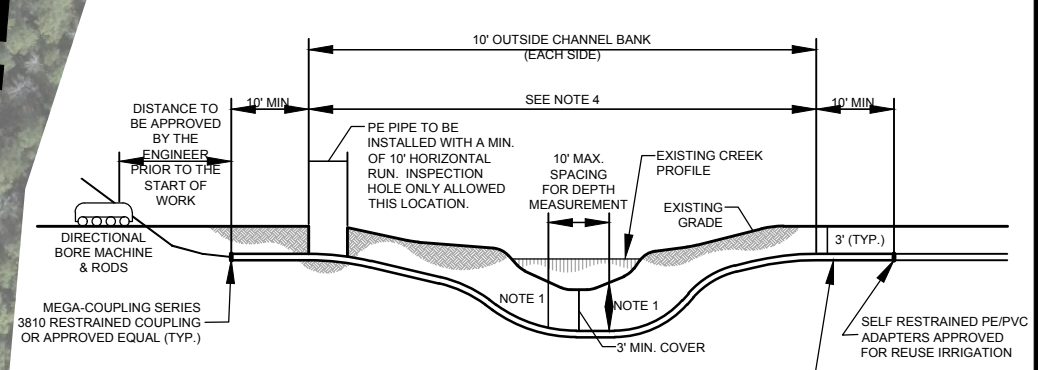
Site Data		Setbacks	
Current Zoning:	R-1	Front:	40'
Proposed Zoning:	CD-CC	Side:	25'
Total Tract Area:	± 75.9 AC	Rear:	25'
Open Space:	± 11.6 AC		
Public Roads:	± 4,049 LF		
Area in Roads:	± 5.5 AC		
Max. Impervious:	± 17%		
Area in Lots:	± 58 AC		
Total Lot Count:	31 lots		
AKPAR:	18659, 18661, 60646, 61553		

Notes
 1. Wastewater handled by on-site septic. Water service provided by Chatham County Utilities.

Engineer / Surveyor:
 CE Group, Inc.
 301 Glenwood Avenue, Suite 220
 Raleigh, NC 27603
 Phone: 919.367.8790
 Contact: Mark Achness, PE, A.S.L. LEED AP
 Shane Strickland, PLS
 Email: mark@cegroupinc.com

Owner/Developer
 TBM Partners
 6131 Falls of Neuse Rd, Suite 200
 Raleigh, NC 27609
 Contact: Joe Cebrina
 Email: joecebrina@robuckhomes.com

- LEGEND:**
- APPROXIMATE STREAM BUFFERS
 - PROPOSED WATER QUALITY PONDS
 - PUBLIC ROAD
 - ACCESS EASEMENT
 - WATER MAIN

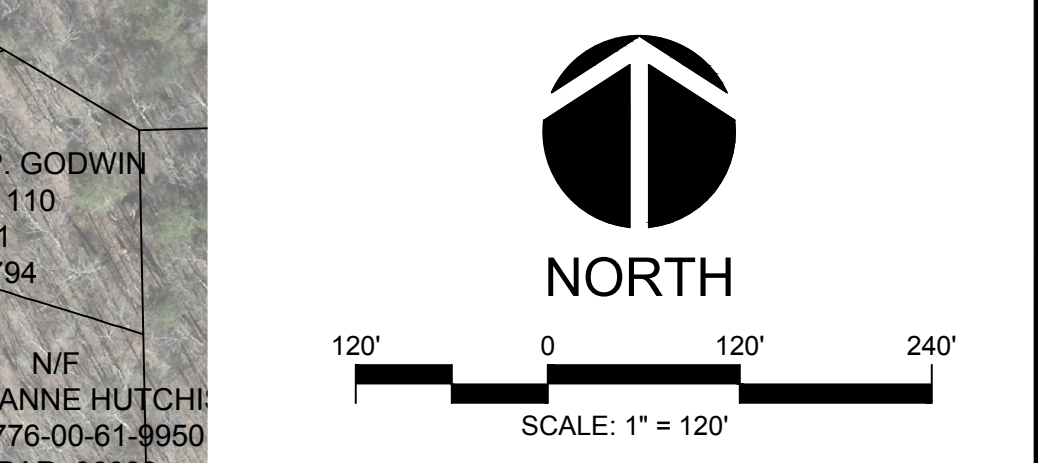


NOTES

1. PROFILE AND PLAN SHALL BE PROVIDED FROM ENTRY TO EXIT FOR EACH DIRECTIONAL BORE SECTION BY THE DIRECTIONAL BORE CONTRACTOR.
2. ALL BORE WORK SHALL BE TESTED PRIOR TO BORING.
3. ALL BORE SECTIONS SHALL BE HYDROSTATICALLY TESTED PER SPECIFICATION STANDARD FROM COMPLETION OF INSTALLATION AND PRIOR TO PLACING THE WATER MAIN ONLINE.
4. LENGTH OF CROSSING, LOCATION OF INSPECTION/OBSERVATION EXCAVATION, NUMBER OF PE PIPE JOINTS, LOCATION OF BORE MACHINE, JUDGES ENTRANCE LOCATION, AND THE BORE MACHINE TO BE APPROVED BY THE ENGINEER PRIOR TO ANY START OF WORK.
5. THIS SECTION ALSO APPLICABLE TO STREAMS, WETLANDS, LARGE STORM DRAINS AND SIMILAR APPLICATIONS FOR DIRECTIONAL BORE WITH POLYETHYLENE PIPE. CONTRACTOR SHALL FURNISH TO THE ENGINEER THE HORIZONTAL LOCATION OF THE BORE IN ACCORDANCE WITH THE SPECIFICATIONS FOR DIRECTIONAL BORING. SEE ALSO LOCAL REGULATORY AGENCIES BORE WORK WITHIN WETLANDS DRAINAGE COMPLEXES OF ANY PHASE OF CONSTRUCTION.

DIRECTIONAL BORE FOR POLYETHYLENE (PE) PIPE
 NTS

LEGEND OAKS HOMEOWNERS ASSN.
 PIN: 9776-04-71-4665
 AKPAR: 89742
 DB: 2023 PG. 0650
 ZONED: R-1



PRELIMINARY DESIGN
 NOT RELEASED FOR CONSTRUCTION