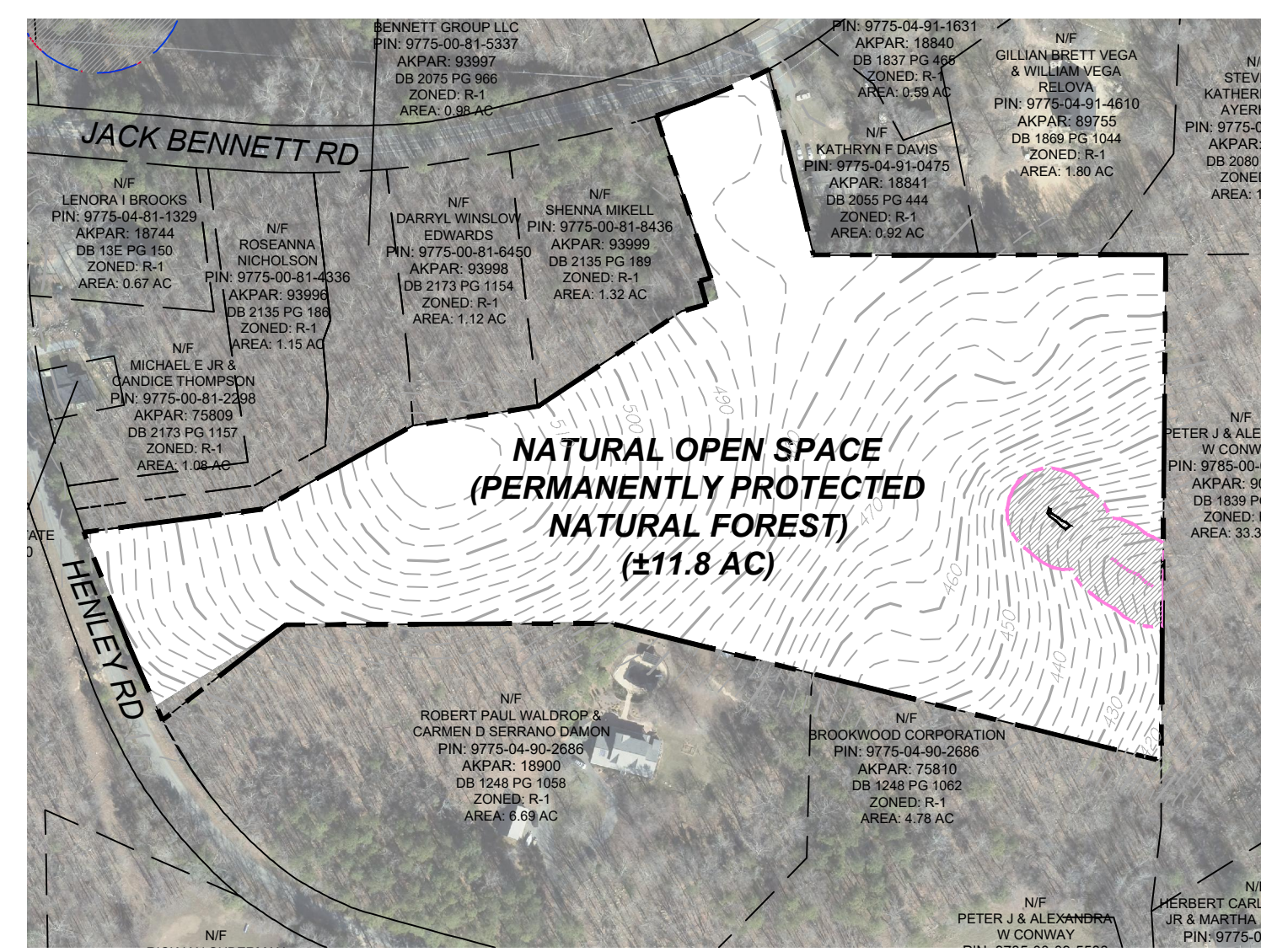
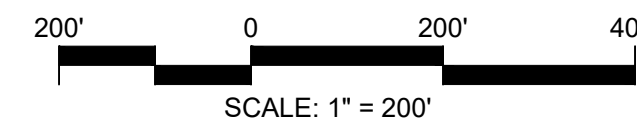


VICINITY MAP



INSET MAP (CONSERVATION PARCEL)



# VICKERS VILLAGE

JULY 23, 2021

FIRST PLAT SUBMITTAL

FIRST PLAT

US 15-501

Chatham County, NC

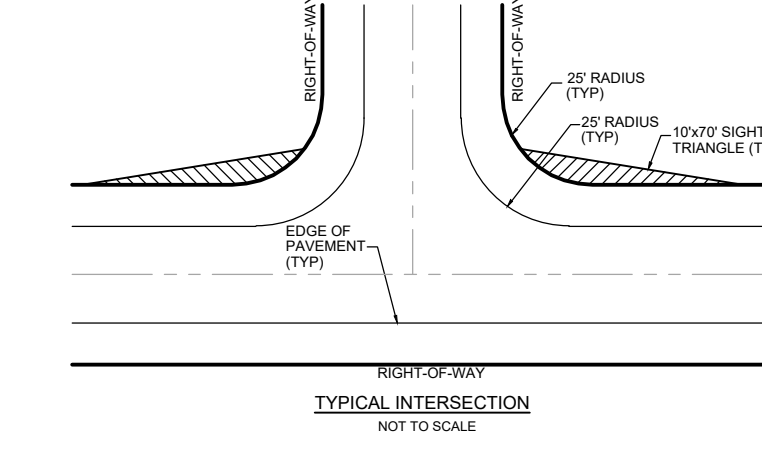
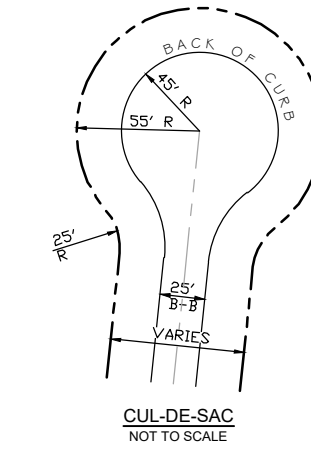
Site Data	R-1	Setbacks	Townhomes	Single Family
Current Zoning:	CD-CC	Front:	20'	20'
Proposed Zoning:	± 101.8 AC	Side:	0'	5'
Total Tract Area:	± 6,100 LF	Rear:	10'	20'
Public Roads:	± 1,086 LF			
Private Roads:	24%			
Max. Impervious:	± 70.4 AC			
Open Space:	184 lots			
Total Lot Count:	181 lots			
Residential Lots:	1 lots			
Commercial Lots:	1 lots			
Utility Lots:	1 lots			
Remaining Lots:	184 lots			
AKPAR:	60653, 18914, 89206, 79965, 69057, 18856, 87996, 71691, 89272, 18857, 18847, 18848, 60719, 79288, 93154, 93155, 93156, 93157, 87093, 89281, 80493			

Engineer / Surveyor:  
CE Group, Inc  
301 Glenwood Avenue, Suite 220  
Raleigh, NC 27603  
Phone: 919.367.8790  
Contact: Mark Ashness, PE, ASLA, LEED AP  
Shane Strickland, PLS  
Email: mark@cegroupinc.com

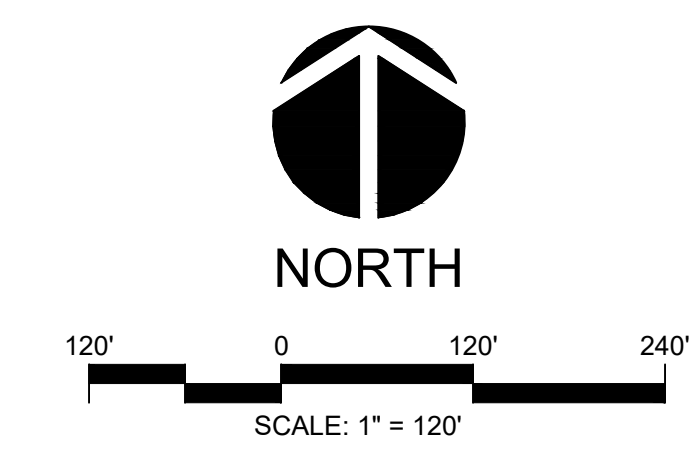
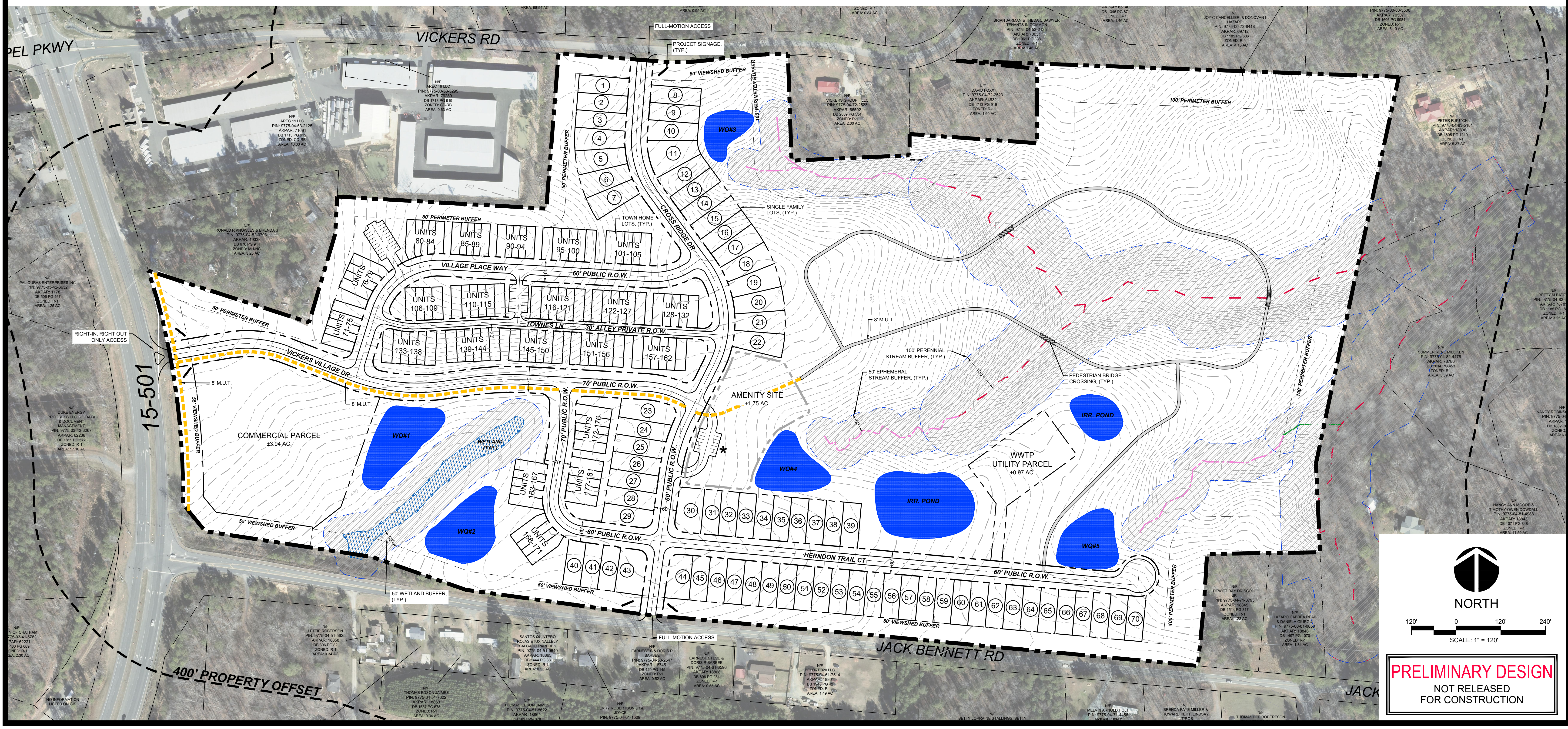


Owner/Developer:  
The Vickers Bennett Group, LLC  
PO Box 935  
Pittsboro, NC 27312  
Contact: Warren Mitchell  
Email: warrenmitchellpe@gmail.com

Notes  
1. Sewer service provided by Aqua NC. Water service provided by Chatham County Utilities.  
2. See First Plat Details sheet for lot sizes and impervious projections.



- Legend:
- Buffer
  - Perennial Stream (100' FROM BANK)
  - Intermittent Stream (50' FROM BANK)
  - Ephemeral Stream (50' FROM BANK)
  - Wetlands (50' FROM EDGE)
  - Proposed Lot Line
  - Proposed Water Quality Pond
  - Mail Kiosk



**PRELIMINARY DESIGN**  
NOT RELEASED  
FOR CONSTRUCTION