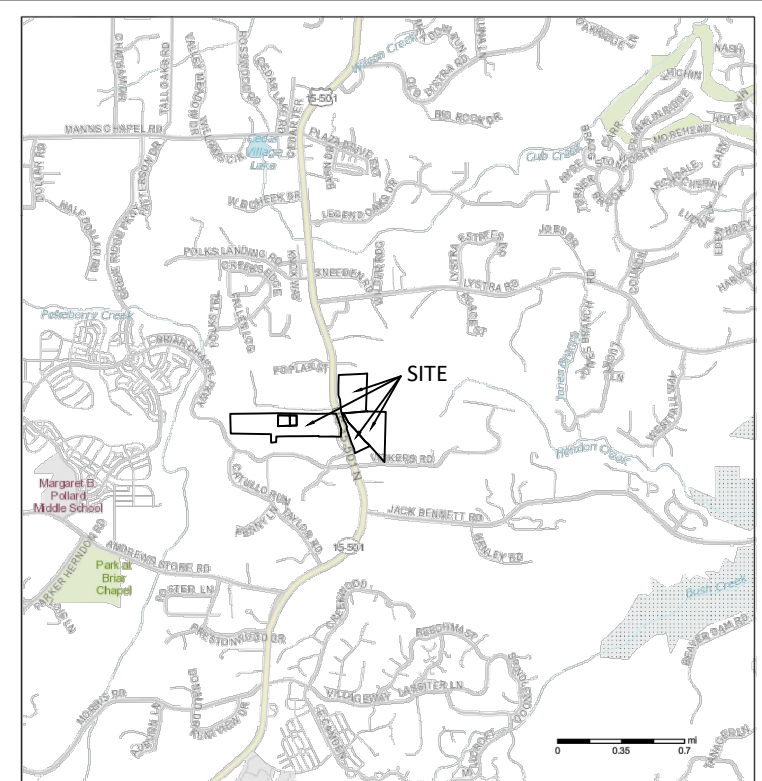
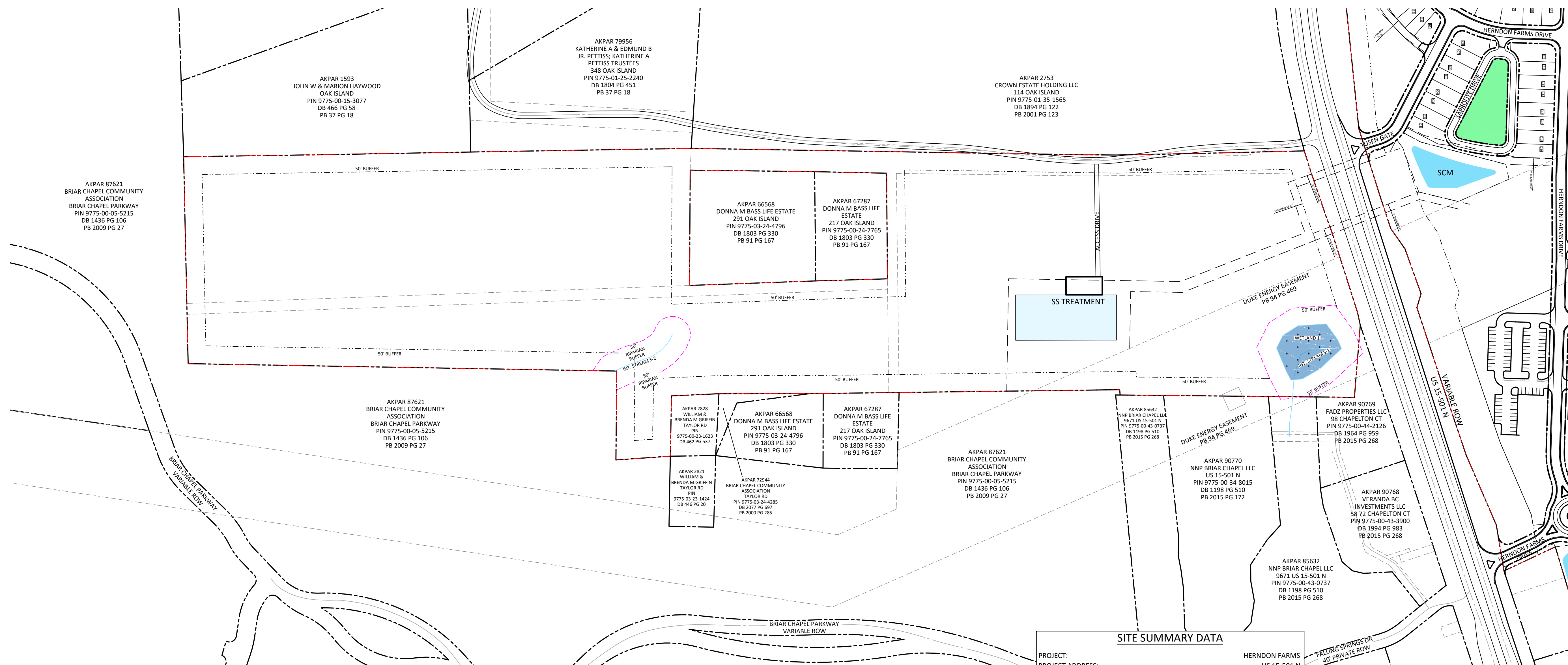


Exhibit B.3.C

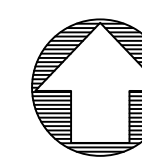
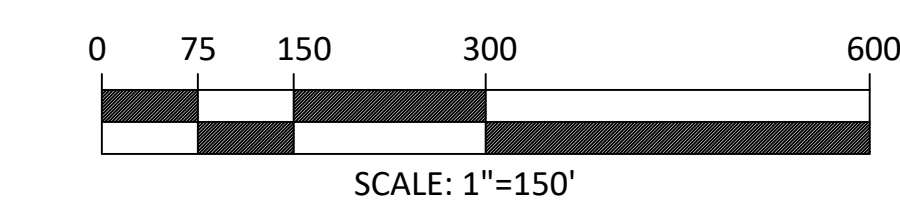


VICINITY MAP
NOT TO SCALE



SITE SUMMARY DATA	
PROJECT:	HERNDON FARMS
PROJECT ADDRESS:	US 15-501 N CHAPEL HILL, NC 27517 18909, 18896, 18897, 2752
AKPAR:	68.36 ACRES
TOTAL SITE ACREAGE: (DEEDED)	68.36 ACRES
PUBLIC STREETS:	6,297 LF
PRIVATE STREETS:	1,435 LF
CURRENT ZONING:	R-1
WATERSHED:	WS-IV; NSW (PROTECTED)
SETBACKS:	
FRONT	10 FEET
AGGREGATE FRONT/REAR	20 FEET
AGGREGATE SIDE YARD	10 FEET
CORNER SIDE	10 FEET
DEVELOPER:	SAPROLITE DEVELOPMENT, LLC 1506 EAST FRANKLIN STREET, SUITE 300 CHAPEL HILL, NC 27514
CONTACT:	TRAVIS BLAKE
PHONE:	(919) 260-4881
EMAIL:	mtblake@outlook.com
CONSULTANT:	ARCADIA CONSULTING ENGINEERS, PLLC P.O. BOX 2077 APEX, NC 27502
CONTACT:	TRENTON D. STEWART, PE
PHONE:	(919) 363-1422
FAX:	(919) 363-1477
EMAIL:	trent@arcadiaengineers.com

LEGEND	
ROW	RIGHT-OF-WAY
SCM	STORMWATER CONTROL MEASURE
SS	SANITARY SEWER



PO BOX 2077
APEX, NC 27502
TELEPHONE: 919 363-1422
FACSIMILE: 919 363-1477



HERNDON FARMS
WILLIAMS TOWNSHIP
CHATHAM COUNTY
NORTH CAROLINA

DRAWN BY	CHECKED BY
KAH	TDS
DATE	6/16/2021

REVISIONS	
1	8/6/2021

SHEET TITLE

WEST TRACT -
FIRST PLAT

SHEET NUMBER

B3.C
OF

1. CHATHAM COUNTY REVIEW COMMENTS