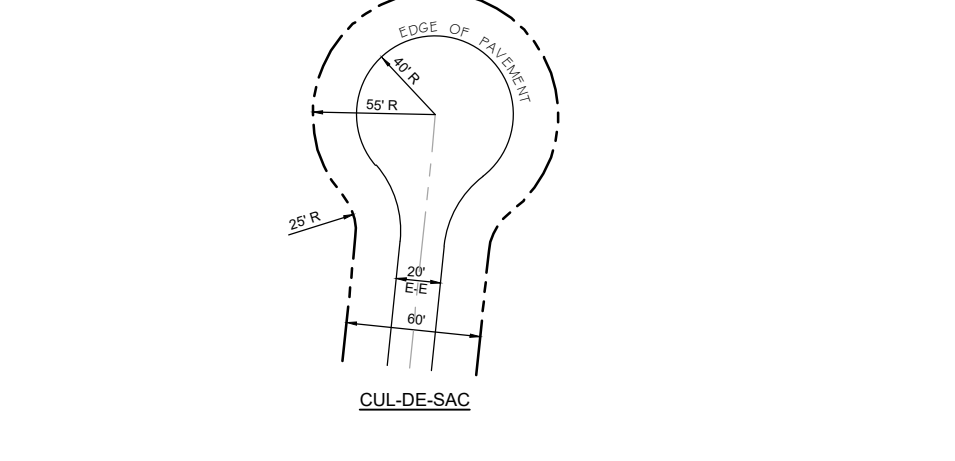
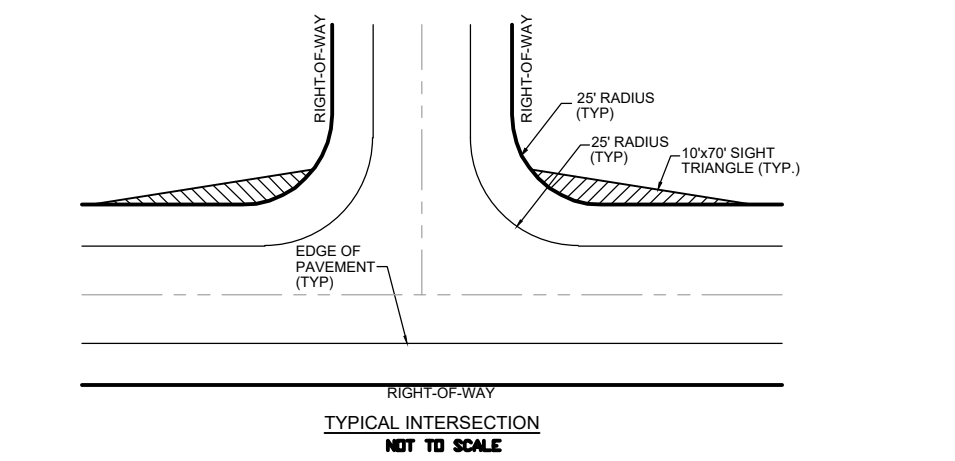
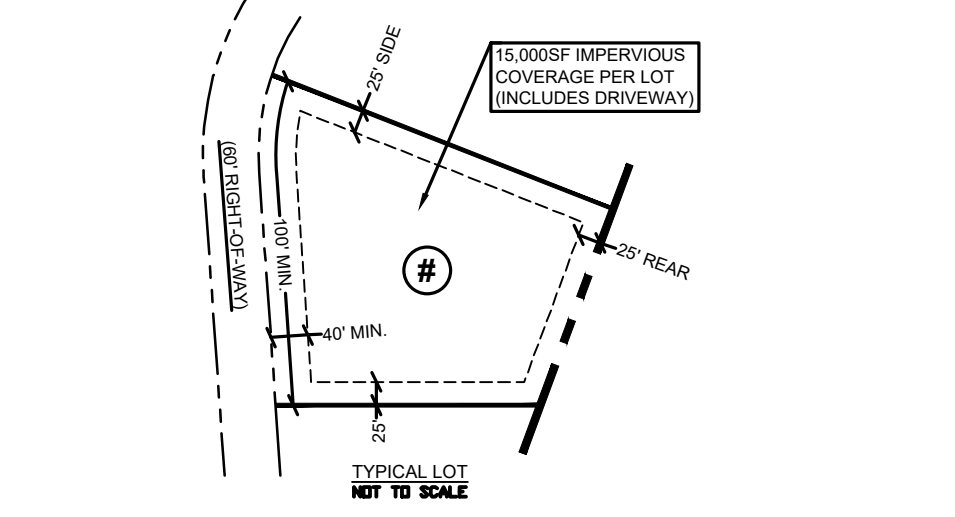
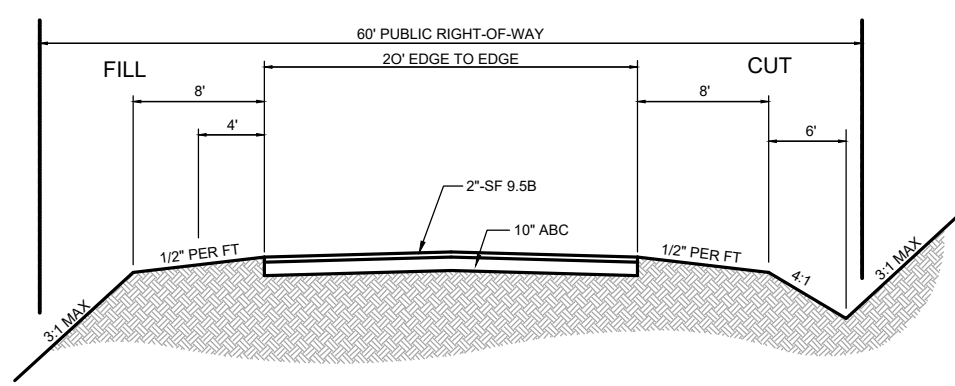


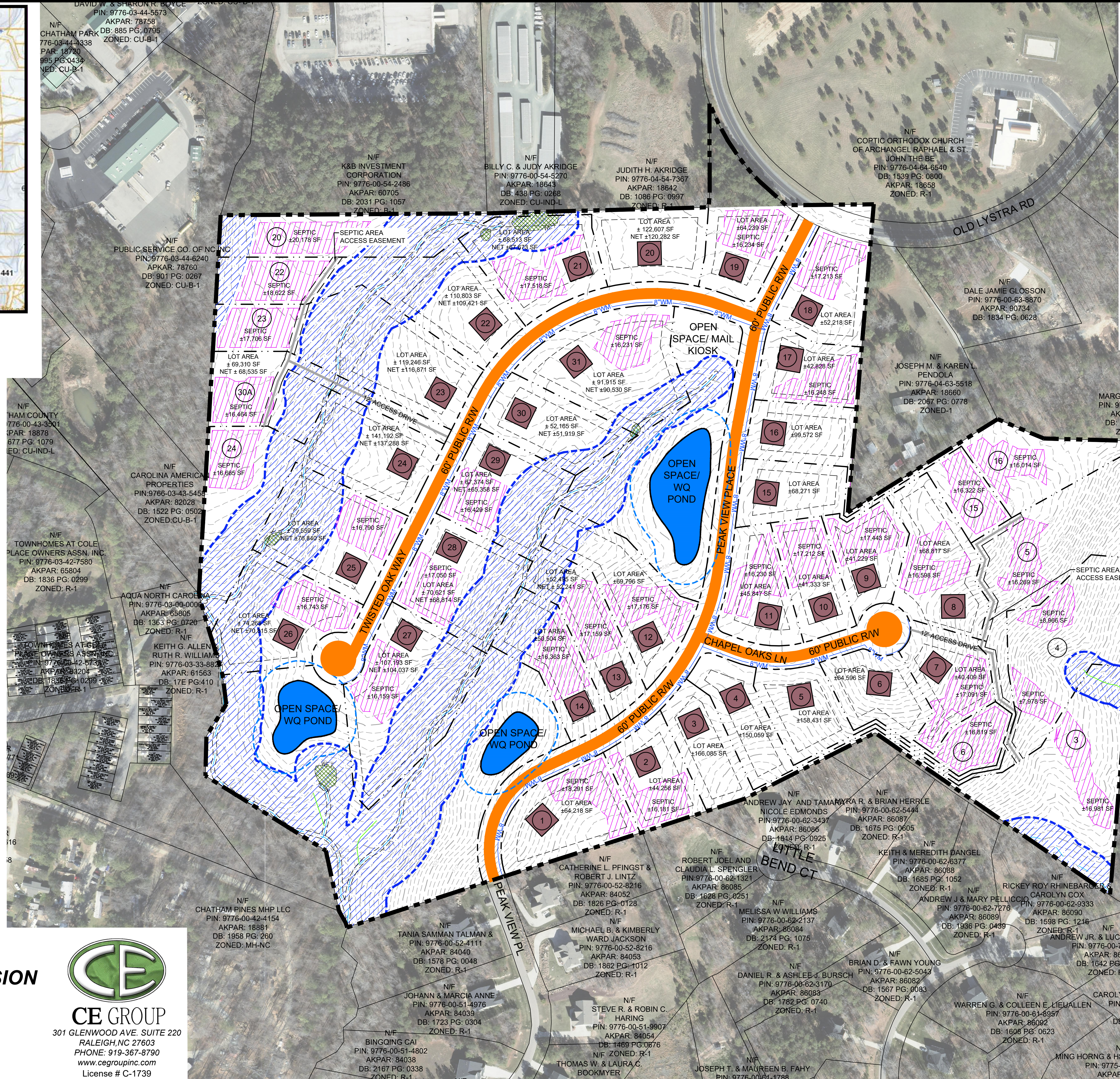
VICINITY MAP



CHAPEL OAKS SUBDIVISION
FIRST PLAT
CHATHAM COUNTY, NC
AUGUST 20, 2021



CE GROUP
 301 GLENWOOD AVE. SUITE 220
 RALEIGH, NC 27603
 PHONE: 919-367-8790
 www.cegroupinc.com
 License # C-1739



Site Data		Setbacks	
Current Zoning:	R-1	Front:	40'
Proposed Zoning:	CD-CC	Side:	25'
Total Tract Area:	± 75.9 AC	Rear:	25'
Open Space:	± 11.6 AC		
Public Roads:	± 4.049 LF		
Area in Roads:	± 5.5 AC		
Max. Impervious:	± 17%		
Area in Lots:	± 58 AC		
Total Lot Count:	31 lots		
AKPAR:	18659, 18661, 60646, 61553		

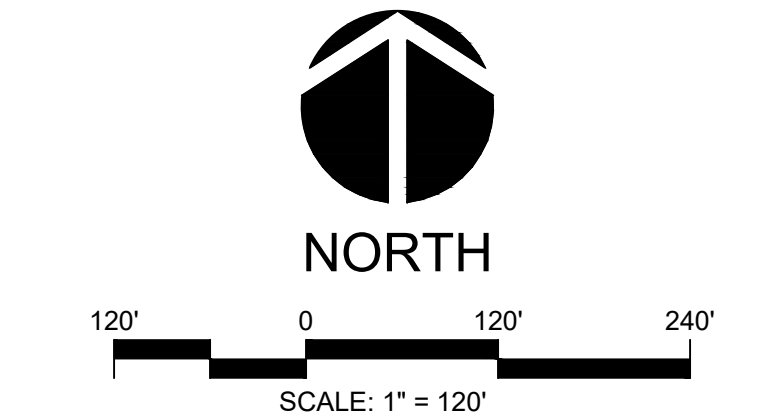
Notes
 1. Wastewater handled by on-site septic. Water service provided by Chatham County Utilities.

Engineer / Surveyor:
 CE Group, Inc.
 301 Glenwood Avenue, Suite 220
 Raleigh, NC 27603
 Phone: 919.367.8790
 Contact: Mark Achness, PE, ASLA, LEED AP
 Shane Strickland, PLS
 Email: mark@cegroupinc.com

Owner/Developer
 TBM Partners
 6131 Falls of Neuse Rd, Suite 200
 Raleigh, NC 27609
 Contact: Joe Cebrina
 Email: joebrina@robuckhomes.com

LEGEND:

	APPROXIMATE STREAM BUFFERS
	PROPOSED WATER QUALITY PONDS
	PUBLIC ROAD
	ACCESS EASEMENT
	WATER MAIN



PRELIMINARY DESIGN
 NOT RELEASED
 FOR CONSTRUCTION