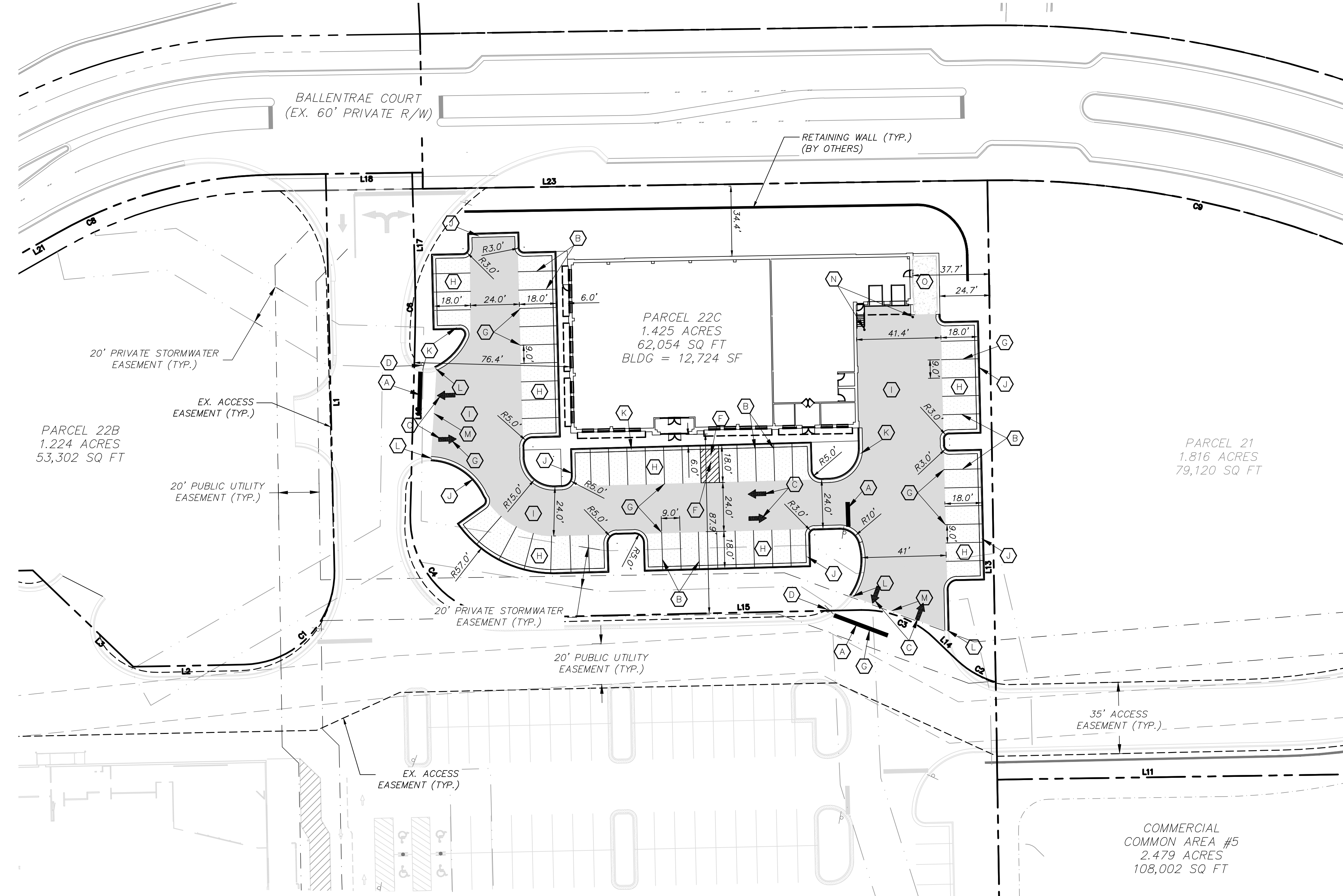


- KEY NOTES:**
- (A) WHITE STOP BAR SHALL BE 24" WIDE (MINIMUM) (TYP.).
 - (B) 8" WHITE LINE TO BE THERMOPLASTIC, 120 MILS, PER NCDOT STANDARD DETAIL 1205.01.
 - (C) TRAFFIC ARROWS (TYP.) SHALL BE 5.0' IN LENGTH. SHALL CONFORM TO M.U.T.C.D. STANDARDS.
 - (D) STOP SIGN (TYP.).
 - (E) ACCESSIBLE SIGN (TYP.).
 - (F) ACCESSIBLE LANE STRIPING PER ADA REQUIREMENTS.
 - (G) ALL PARKING LOT STRIPING TO BE WHITE (TYP.).
 - (H) LIGHT DUTY ASPHALT PAVING (TYP.). MINIMUM PAVEMENT SECTION TO BE 6" CRUSHED AGGREGATE BASE COURSE (NCDOT CABC TYPE 1 OR TYPE 2), 2.5" ASPHALT BINDER COURSE (NCDOT 1-19.0B), 1.5" ASPHALT SURFACE COURSE (NCDOT SF-9.5A). FINAL LIGHT DUTY ASPHALT PAVEMENT DESIGN SHALL BE PER GEOTECHNICAL ENGINEER RECOMMENDATIONS.
 - (I) HEAVY DUTY ASPHALT PAVING (TYP.). MINIMUM PAVEMENT SECTION TO BE 8" CRUSHED AGGREGATE BASE COURSE (NCDOT CABC TYPE 1 TO TYPE 2), 4.0" ASPHALT BINDER COURSE (NCDOT 119-0B), 2.0" ASPHALT SURFACE COURSE (NCDOT SF-9.5A). FINAL HEAVY DUTY ASPHALT PAVEMENT DESIGN SHALL BE PER GEOTECHNICAL ENGINEER RECOMMENDATIONS.
 - (J) 2' STANDARD CURB AND GUTTER (TYP.).
 - (K) 2' STANDARD SPILL CURB (TYP.).
 - (L) CONTRACTOR TO MATCH CURB LINE IN BOTH GRADE AND ELEVATION.
 - (M) CONTRACTOR TO MATCH EXISTING ASPHALT PAVING IN BOTH GRADE AND ELEVATION.
 - (N) CONCRETE BOLLARDS. REFER TO DETAIL ON SHEET D1.0.
 - (O) HEAVY DUTY CONCRETE PAVING (TYP.). MINIMUM PAVEMENT SECTION TO BE 8" CRUSHED AGGREGATE BASE COURSE (NCDOT CABC), 7.0" PORTLAND CEMENT CONCRETE. FINAL HEAVY DUTY CONCRETE PAVING SHALL BE PER GEOTECHNICAL RECOMMENDATIONS.

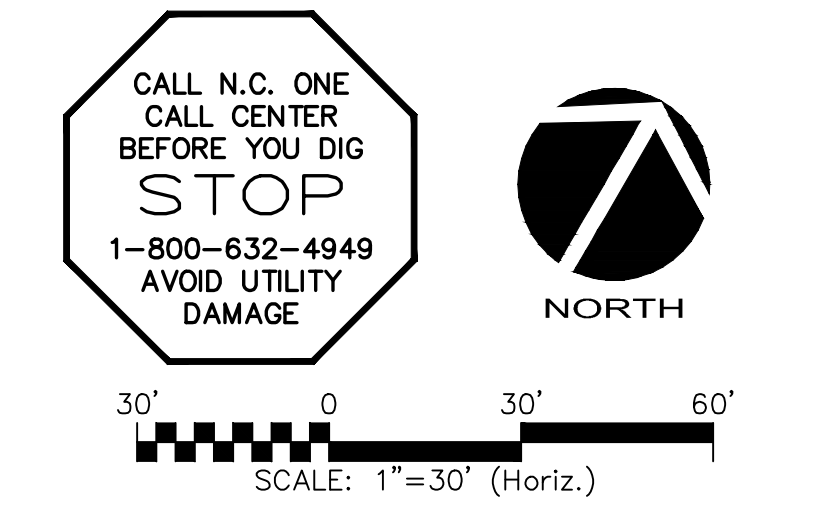


LINE #	LENGTH	DIRECTION
L1	194.72	S31°14'59"E
L2	54.62	S58°50'44"W
L3	68.24	N76°09'16"W
L4	162.53	S58°50'44"W
L5	324.75	N31°09'19"W
L6	69.15	N37°28'54"W
L7	90.38	S70°06'59"W
L8	466.23	S59°06'07"W
L9	249.76	S51°41'30"W
L10	271.33	N30°51'48"W
L11	202.84	N59°08'12"E
L12	199.08	N26°18'13"E
L13	294.03	N30°57'03"W

LINE #	LENGTH	DIRECTION
L14	15.37	S76°14'14"E
L15	171.23	N58°45'01"E
L16	88.58	S28°29'34"E
L17	52.19	S31°35'31"E
L18	74.11	S59°08'12"W
L19	88.54	N35°50'42"W
L20	37.39	S54°11'23"W
L21	42.74	S30°29'31"W
L22	76.00	N31°04'03"W
L23	276.90	N59°08'12"E
L24	160.66	S59°38'32"E
L25	312.14	S39°30'13"W
L26	83.80	S20°39'12"W

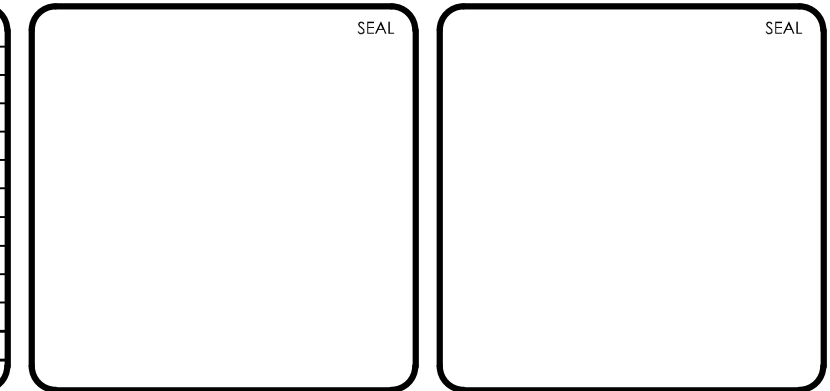
CURVE	RADIUS	LENGTH	TANGENT	BEARING	CHORD	DELTA
C1	45.00	70.76	45.07	N13°47'52.68"E	63.69	90°05'43"
C2	45.00	22.19	11.33	N89°37'59.41"E	21.97	28°15'34"
C3	50.00	39.28	20.72	S81°15'23.83"W	38.28	45°00'45"
C4	49.00	79.33	51.42	S74°52'16.42"E	70.94	92°45'25"
C6	505.00	27.31	13.66	N30°02'32.36"W	27.31	3°05'57"
C7	280.00	115.81	58.74	N42°20'26.63"E	114.99	23°41'52"
C8	220.00	109.99	56.17	S44°48'51.34"W	108.85	28°38'41"
C9	462.00	493.65	273.34	S89°44'50.18"W	470.50	61°13'16"
C10	20.00	34.61	23.48	N10°04'09.50"W	30.45	99°08'44"

- LEGEND:**
- R/W LINE
 - SITE PROPERTY LINE
 - ADJACENT PROPERTY LINE
 - ZONING LINE
 - SETBACK LINE
 - BUILDING SETBACK LINE
 - COMMERCIAL LANDSCAPE BUFFER
 - ACCESS EASEMENT
 - EX. EDGE OF PAVEMENT
 - Light Duty Asphalt Pavement
 - Heavy Duty Asphalt Pavement
 - Rigid Concrete Pavement



FINAL DESIGN
DO NOT USE FOR CONSTRUCTION

REV. NO.	DESCRIPTION	DATE
A	ISSUED FOR PERMIT	2021.08.13



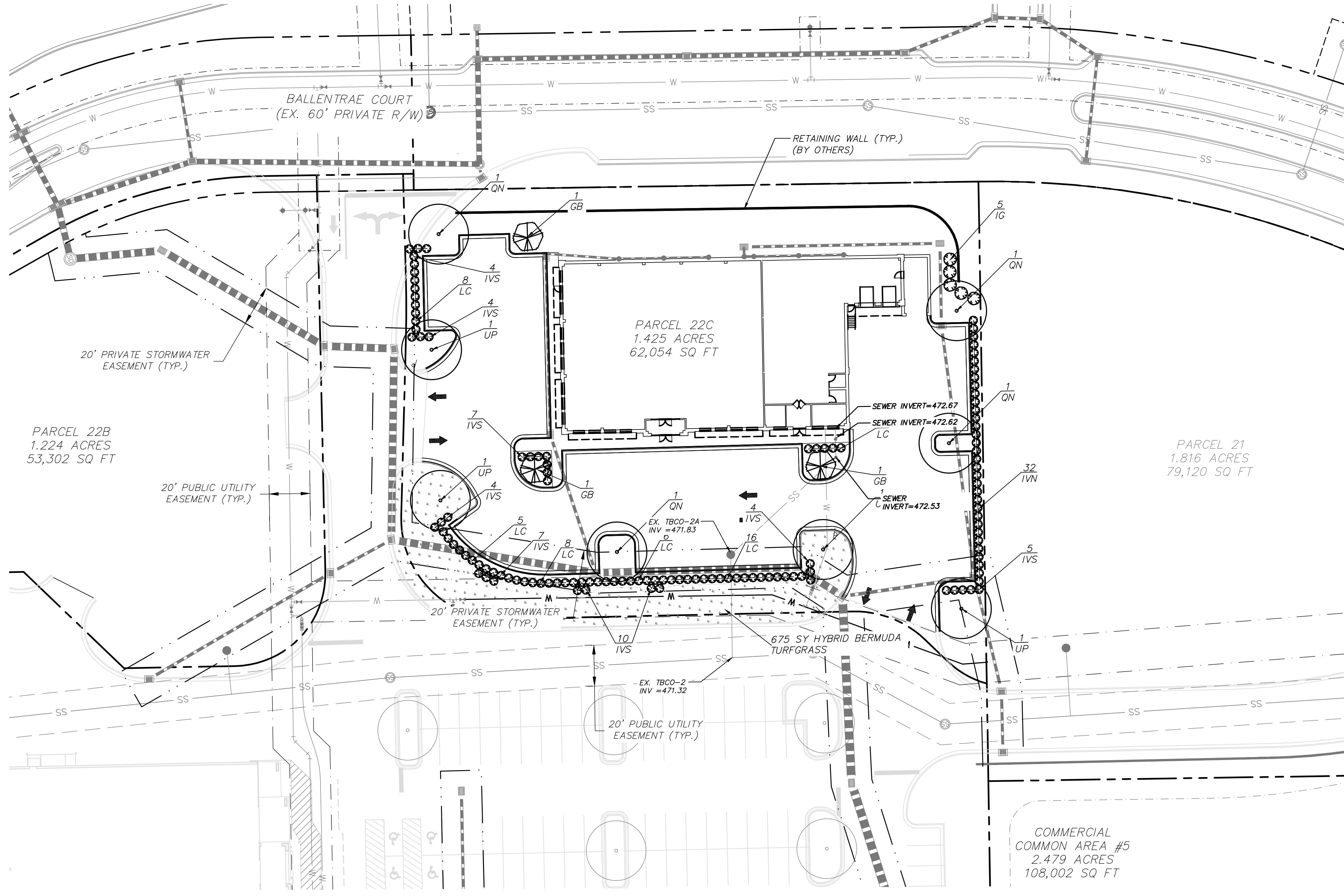
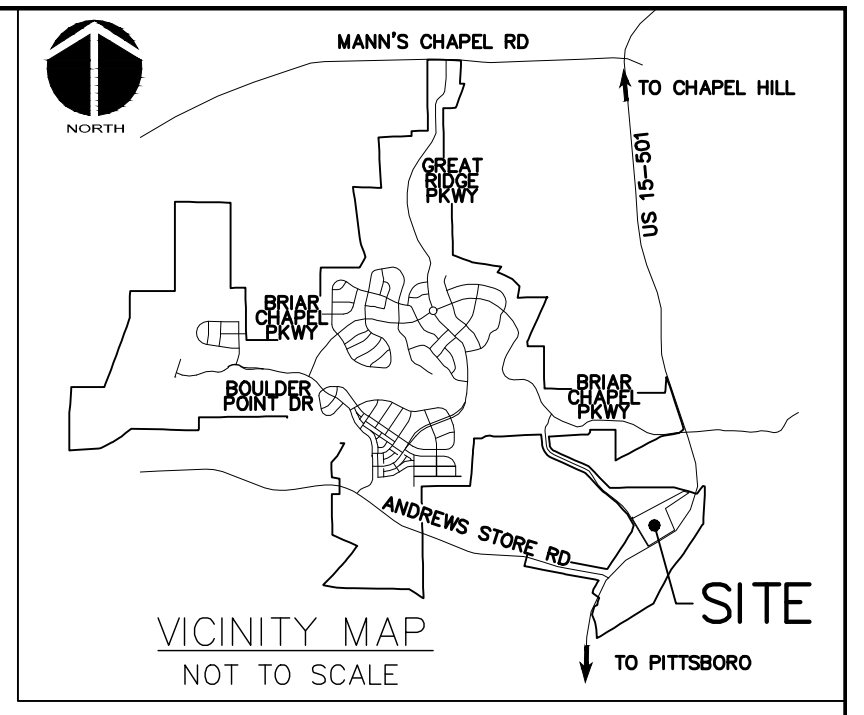
MCKIM & CREED
1730 Varsity Drive, Suite 500
Raleigh, North Carolina 27606
Phone: (919)233-8091, Fax: (919)233-8031
F-1222
www.mckimcreed.com

Goodwill
Industries of Eastern North Carolina, Inc.

COMMERCIAL PROPERTIES INC.
BRIAR CHAPEL SD WEST
CHATHAM COUNTY, NORTH CAROLINA

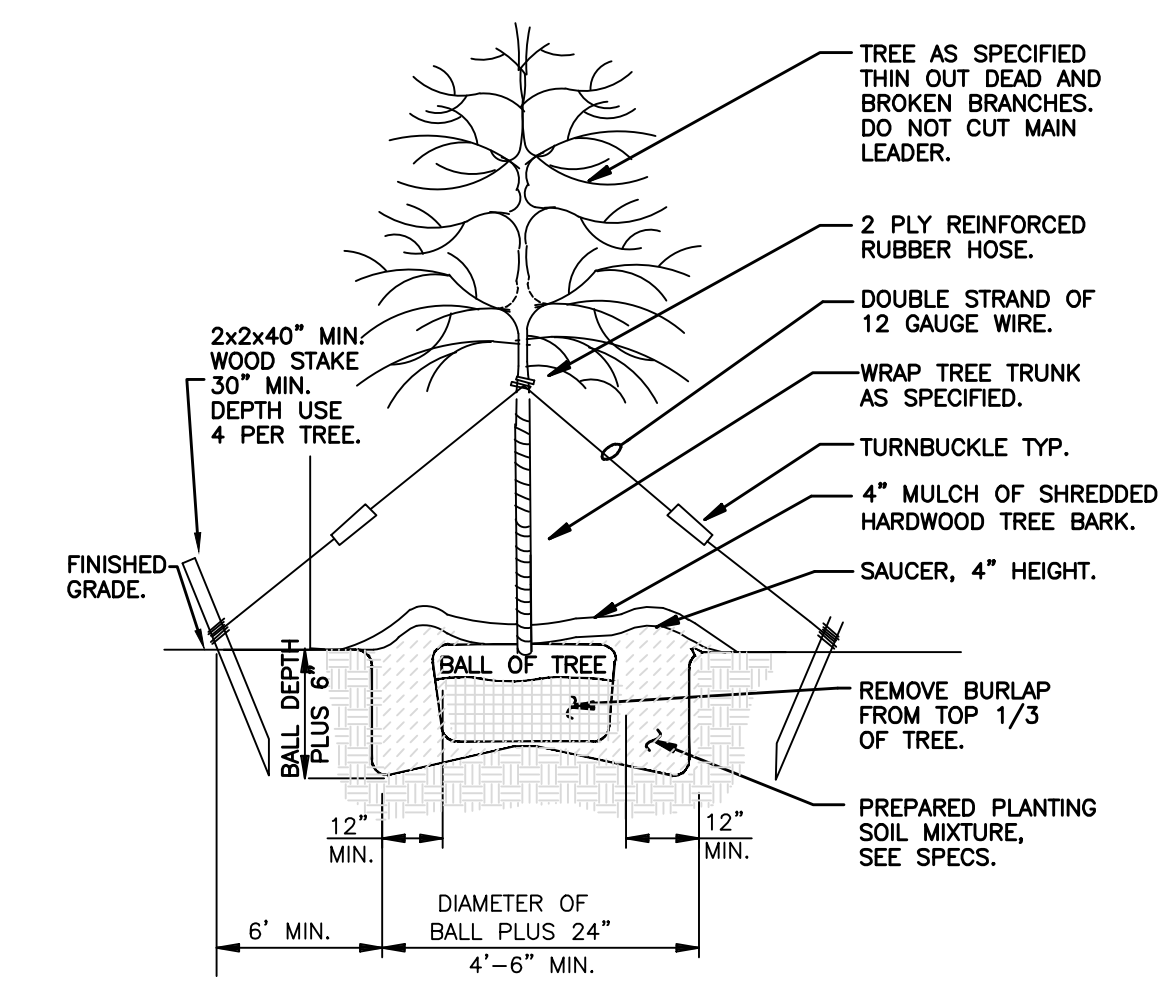
SITE PLAN

DATE: AUGUST 13, 2021	SCALE: HORIZONTAL: 1"=30'	M&C FILE NUMBER: C1.X
M&C PROJ. #: 00741-0011	VERTICAL: N/A	DRAWING NUMBER: C1.0
DRAWN: JFS		
DESIGNED: DJB		
CHECKED: DJB		
PROJ. MGR.: GCA		
STATUS: FINAL DESIGN ISSUED FOR PERMIT		REVISION: A

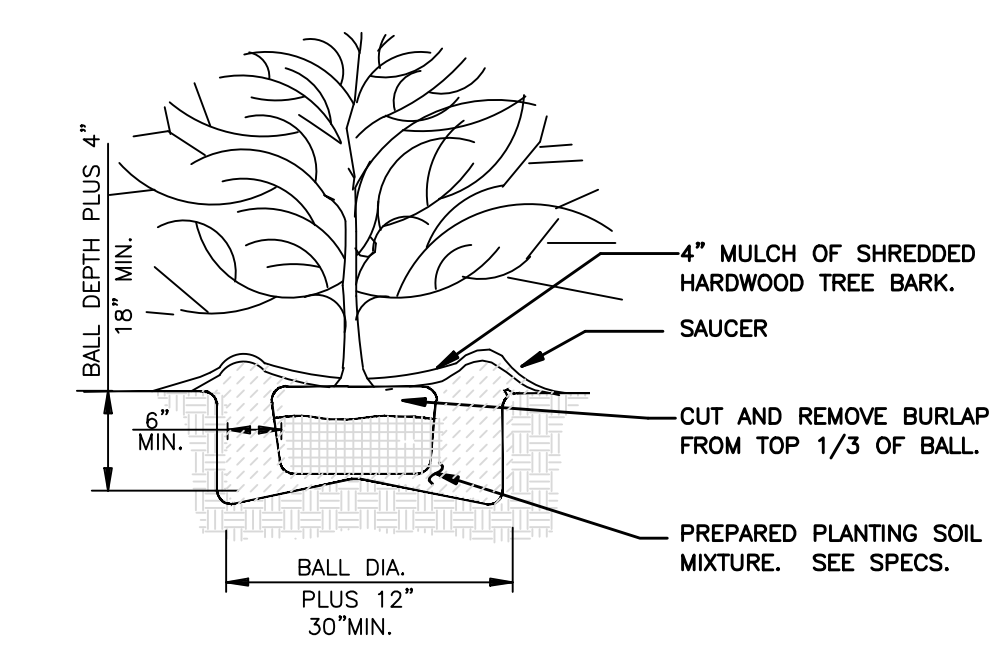


PLANTING NOTES:

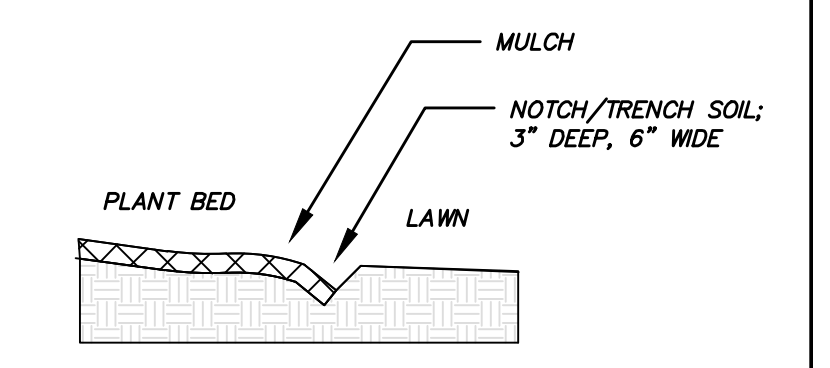
- EXISTING UTILITIES SHOWN ARE APPROXIMATE AND SHALL BE VERIFIED IN THE FIELD PRIOR TO BEGINNING WORK. CONTRACTOR SHALL CONTACT NC ONE CALL CENTER AT 1-800-632-4949 FOR LOCATION OF EXISTING UTILITIES PRIOR TO BEGINNING CONSTRUCTION. THE CONTRACTOR SHALL EXERCISE CAUTION WHEN WORKING AROUND EXISTING UTILITIES TO REMAIN.
- PLANT LIST IS PROVIDED FOR CONVENIENCE ONLY. IN THE CASE OF DISCREPANCIES BETWEEN THE PLAN AND PLANT LIST QUANTITIES, THE PLAN SHALL TAKE PRECEDENCE.
- AFTER THE SITE IS STABILIZED AND FREE OF SEDIMENTATION, THE CONTRACTOR SHALL REMOVE ALL TEMPORARY EROSION CONTROL DEVICES, SILT, RIP RAP AND TEMPORARY STONE STAGING AREAS FOR REPLACEMENT WITH PLANTING SOIL. PROVIDE PLANTING ACCORDING TO THE LANDSCAPE PLAN.
- TEMPORARY EROSION CONTROL SEED MUST BE FULLY REMOVED PRIOR TO PREPARATION OF PERMANENT SEED, SOD OR LANDSCAPE BEDS.
- UNLESS OTHERWISE NOTED IN THE PLANT LIST, THE CONTRACTOR SHALL OBTAIN AND INSTALL ONLY PLANT MATERIAL THAT IS GROWN ON ITS OWN. ROOT-GRAFTED OR BUDDED PLANT MATERIAL WILL BE REJECTED.
- ALL TREES SHALL BE OBTAINED FROM THE NURSERY WITH EXPOSED ROOT CROWNS. BALLED AND BURLAPPED MATERIAL DELIVERED TO SITE WITH BURIED OR RECENTLY BURIED ROOT CROWNS WILL BE REJECTED.
- CONTRACTOR SHALL NOTIFY ENGINEER OR LANDSCAPE ARCHITECT OF PLANT SUBSTITUTIONS IN ANY MEASUREMENT OR SPECIES INDICATED FOR APPROVAL. SEE SPECIFICATIONS FOR FULL NOTIFICATION REQUIREMENTS.
- DO NOT PLANT IN STORM WATER CONVEYANCE SWALES OR PROVIDE FINE GRADING THAT DISRUPTS FLOW OR CHANGES LONGITUDINAL SLOPES.
- PLANT THE OUTER EDGES OF EACH PLANTING GROUP FOLLOWING THE BED OUTLINE ACCORDING TO THE PLAN. ONCE A SATISFACTORY MATCHED OUTER SHAPE IS OBTAINED FILL THE CENTER OF EACH AREA WITH PLANTS ACCORDING TO THE PLAN AND SPACING NOTES.
- THE PLANTING LAYOUT WITHIN PLANTING BEDS SHOULD BE SHIFTED TO MINIMIZE CONFLICTS WITH EXISTING TREE ROOTS.
- DISTURBED EARTH AREAS BEYOND PROJECT LIMITS THAT ARE DIRECTLY CAUSED BY CONTRACTOR MEANS AND METHODS SHALL BE RESTORED WITH TURF SOD; UNLESS OTHERWISE NOTED.
- PARKING LOT ISLANDS ARE MULCHED WITH 4" DEEP HARDWOOD MULCH.
- REFER TO PROJECT MANUAL FOR ADDITIONAL REQUIREMENTS.



TREE PLANTING DETAIL-LARGE TREE
NOT TO SCALE



SHRUB PLANTING DETAIL
NOT TO SCALE



PLANT BED EDGE 'V' AT LAWN
NOT TO SCALE

Code	Botanical Name	Common Name	Qty.	Root	Caliper	Height	Spread	Comments
Trees								
GB	Ginkgo biloba 'Autumn Gold'	Autumn Gold Ginkgo	3	B&B	2"	10-12'	6'	Strong central straight leader, evenly branched, limbed up to 6'
QN	Quercus nuttallii	Nuttall Oak	4	B&B	2"	10-12'	6'	Strong central straight leader, evenly branched, limbed up to 6'
UP	Ulmus parvifolia	Lacebark Elm	4	B&B	2"	10-12'	6'	Strong central straight leader, evenly branched, limbed up to 6'
Shrubs								
IG	Ilex glabra	Inkberry Holly	5	cont.	----	42"	24"	60" on center full
IVS	Itea virginica	Virginia Sweetspire	45	cont.	----	20"	18"	48" on center full
IVN	Ilex vomitoria 'nana'	Dwarf Yaupon Holly	32	cont.	----	20"	18"	48" on center full
LC	Loropetalum chinense	Chinese Fringe flower	48	cont.	----	24"	18"	48" on center full

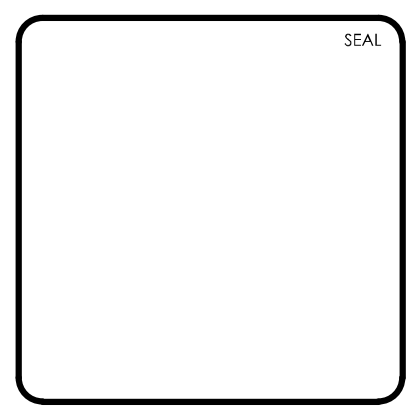
FINAL DESIGN
DO NOT USE FOR CONSTRUCTION

CALL N.C. ONE CALL CENTER BEFORE YOU DIG STOP 1-800-632-4949 AVOID UTILITY DAMAGE

NORTH

SCALE: 1"=50' (Horiz.)

REV. NO.	ISSUED FOR PERMIT	DESCRIPTION	DATE
A			2021.08.13



MCKIM & CREED

1730 Varsity Drive, Suite 500
Raleigh, North Carolina 27606
Phone: (919)233-8091, Fax: (919)233-8031
F-1222

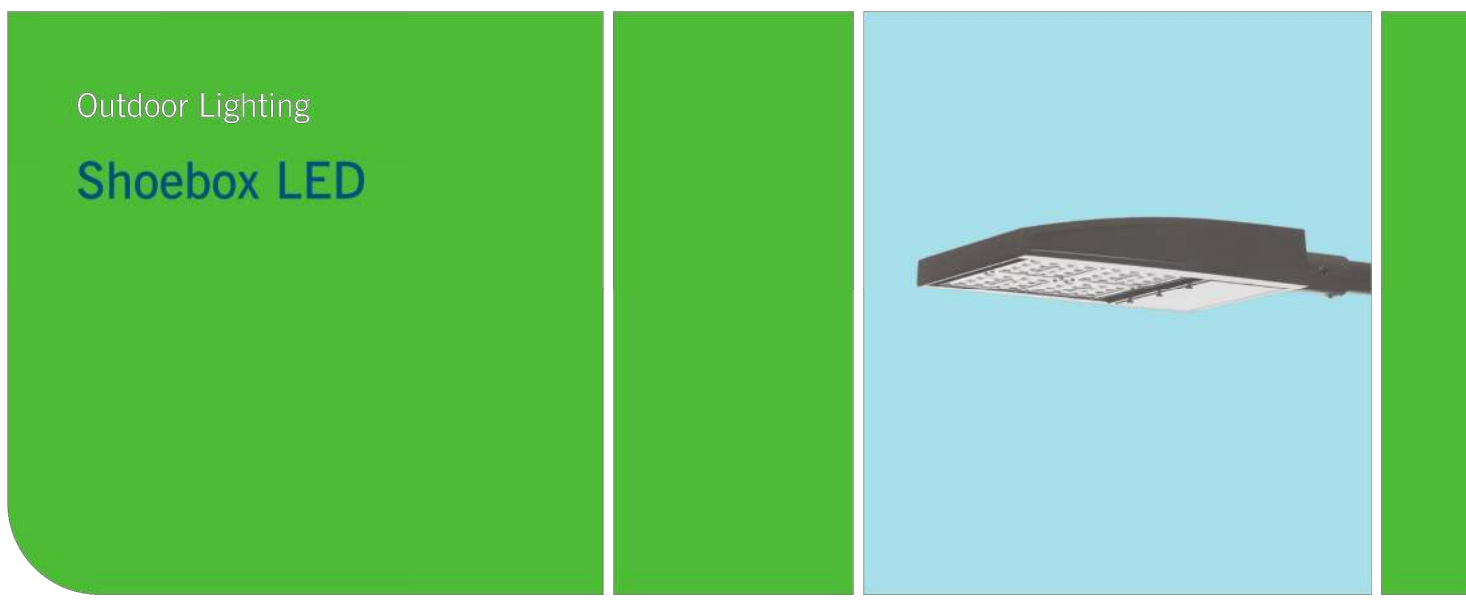
www.mckimcreed.com

Goodwill
Industries of Eastern North Carolina, Inc.

COMMERCIAL PROPERTIES INC.
BRIAR CHAPEL SD WEST
CHATHAM COUNTY, NORTH CAROLINA

LANDSCAPING PLAN

DATE: AUGUST 13, 2021	SCALE: 1"=30'	MISC. FILE NUMBER: L1.0
MCE PROJ. #: 00741-0011	HORIZONTAL: 1"=30'	DRAWING NUMBER: L1.0
DRAWN: JFS	VERTICAL: N/A	
DESIGNED: DJB		
CHECKED: DJB		
PROJ. MGR.: GCA		
STATUS: FINAL DESIGN ISSUED FOR PERMIT	REVISION: A	



Outdoor Lighting
Shoobox LED

The energy-efficient Shoobox LED combines a decorative, contemporary style with versatility and ample lighting effect that is perfect for streets, parking lots, commercial buildings and residential communities. The Shoobox LED provides excellent color rendition along with a controlled light pattern that reduces glare and keeps the light directed only where you want it. Available in black, dark bronze, gray or white with one to four fixtures per pole.

LED (Light Emitting Diode) **150, 220, 420, 530 watts**

Mounting heights **25', 30', 35'**

Colors **Black, Bronze, Gray, White**

Poles **Fiberglass (1 or 2 fixtures per pole), Decorative tapered metal, Decorative square metal**

Note: 35' pole available in black or bronze only.

For additional information, visit us at duke-energy.com/OutdoorLighting or call us toll free at 866.769.6417.



Outdoor Lighting
Shoobox LED

Light source: LED (white)
Replacement for* LED Wattage 150 – 250-watt HPS and metal halide; LED Wattage 205 – up to 400-watt metal halide; LED Wattage 530 – 1,000-watt metal halide
Warm-up and restrike time: Instant on (no warm-up or restrike time)

Wattage	BUG Rating	Light Pattern	Lumens	Color Temp
LED 150	B5-UO-G3	IESNA Type V (circular)	19580	4,000K
LED 150	B3-UO-G4	IESNA Type IV (forward throw)	18459	4,000K
LED 150	B2-UO-G3	IESNA Type III (oval)	19006	4,000K
LED 220	B5-UO-G3	IESNA Type V (circular)	25870	4,000K
LED 220	B3-UO-G4	IESNA Type IV (forward throw)	24390	4,000K
LED 220	B2-UO-G4	IESNA Type III (oval)	25114	4,000K
LED 420	B5-UO-G5	IESNA Type V (circular)	48514	4,000K
LED 420	B3-UO-G5	IESNA Type IV (forward throw)	43765	4,000K
LED 530	B5-UO-G5	IESNA Type V (circular)	60296	4,000K
LED 530	B3-UO-G5	IESNA Type IV (forward throw)	54395	4,000K

* These are approximate replacement suggestions; actual conditions could be different.

Poles available:

Name	Mounting height	Color
Round tapered decorative metal*	35'	Black, Bronze
Decorative square metal*	25' and 30'	Black, Bronze, Gray, White
Fiberglass	30'	Black (1 or 2 fixtures per pole), Gray (1 or 2 fixtures per pole)

Features

Features	Benefits
Little or no installation cost	Frees up capital for other projects
Design services by lighting professionals included	Meets industry standards and lighting ordinances
Maintenance included	Eliminates high and unexpected repair bills
Electricity included	Less expensive than metered service
Warranty included	Worry-free
One low monthly cost on your electric bill	Convenience and savings for you
Turnkey operation	Provides hassle-free installation and service
Backed by over 40 years of experience	A name you can trust today ... and tomorrow

* 2" raised foundation available when required on metal poles only.



Statistics

Description	Symbol	Avg	Max	Min	Max/Min	Avg/Min
Parking	X	1.9 fc	5.2 fc	0.4 fc	13.0:1	4.8:1

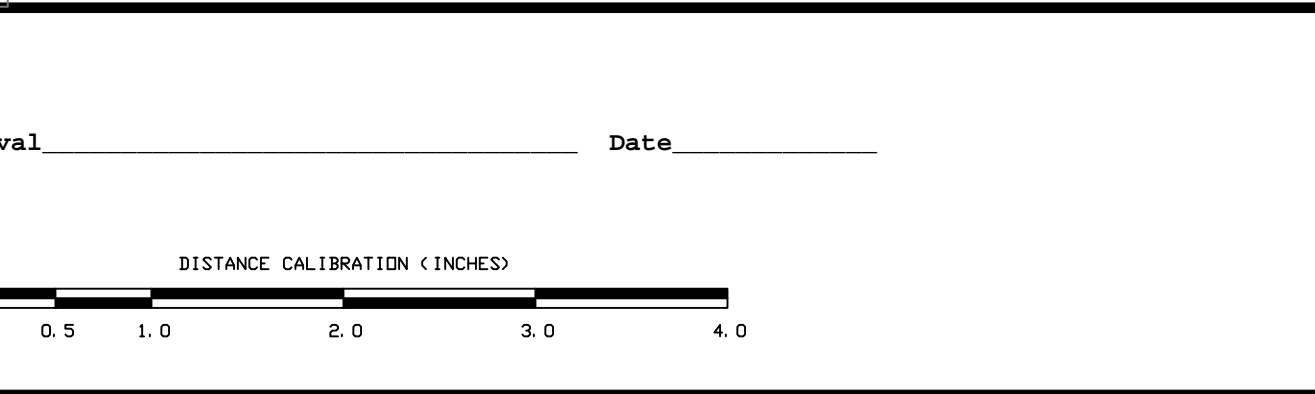
Schedule

Symbol	Label	Quantity	Description	Number Lamps	Lumens Per Lamp	Light Loss Factor
X	150w SB IV	9	LED 150w Shoobox - Type IV - 4000K	48	385	0.85
●	(2) 150w SB IV	2	(2) LED 150w Shoobox - Type IV - 4000K	48	385	0.85
●	(2) 150w SB V	4	(2) LED 150w Shoobox - Type V - 4000K	48	408	0.85

LIGHTING DESIGN TOLERANCE

The calculated footcandle light levels in this lighting design are predicted values and are based on specific information that has been supplied to Duke Energy Progress. Any inaccuracies in the supplied information, differences in luminaire installation, lighted area geometry including elevation differences, reflective properties of surrounding surfaces, obstructions (foliage or otherwise) in the lighted area, or lighting from sources other than listed in this design may produce different results from the predicted values. Normal tolerances of voltage, lamp output, and ballast and luminaire manufacture will also affect results.

Customer approval: _____ Date: _____



PROPRIETARY & CONFIDENTIAL

This document together with the concepts and designs presented herein, presented as an instrument of service, is the sole property of Duke Energy Progress, and is intended only for the specific purpose and prospective client as stated in the title block of this drawing. Any use, copying, reproduction or disclosure of the drawing, design or any information contained herein by the prospective customer or other entities, including without limitation, architects, engineers, or equipment manufacturers is hereby expressly prohibited and shall not be permitted absent prior written consent from, and payment of compensation to Duke Energy Progress. Duke Energy Progress disclaims any liability or responsibility for any unauthorized use of or reliance on this document.

GOODWILL
BRIAR CHAPEL
SITE LIGHTING PLAN

Designed by DEP LIGHTING SOLUTIONS
Reviewed by T.Ferguson Scale 1" = 40'
Date 07/12/2021 Size "Arch D"

Description LED 150w Shoobox
Drawing No. 21-0231A Sht. 1 OF 1