

Exhibit J.7

Wastewater Technologies

The Developer must choose a technology that will meet the high level of treatment required to meet Type 2 Reuse Wastewater standards, **Exhibit J.5**. In addition, the technology must have the capabilities of being placed near existing developments without having any significant noise, odor, or visual issues. The Developer consider membrane bioreactor technology (MBR) before choosing the AquaPoint's AquaFast system. The MBR systems available at the time had two major issues. 1. Is that the plants were fairly loud because of the blowers that pushed air into the treatment process and poly membranes were expensive to replace and maintain. One manufacturer of MBR plants revealed that both issues have been solved with the adaptation of low noise blowers and baffles to the equipment and the development of ceramic membranes that replace the poly membrane being used. These developments have made the MBR equipment from OVIVO (attached) the technology of choice for this development.

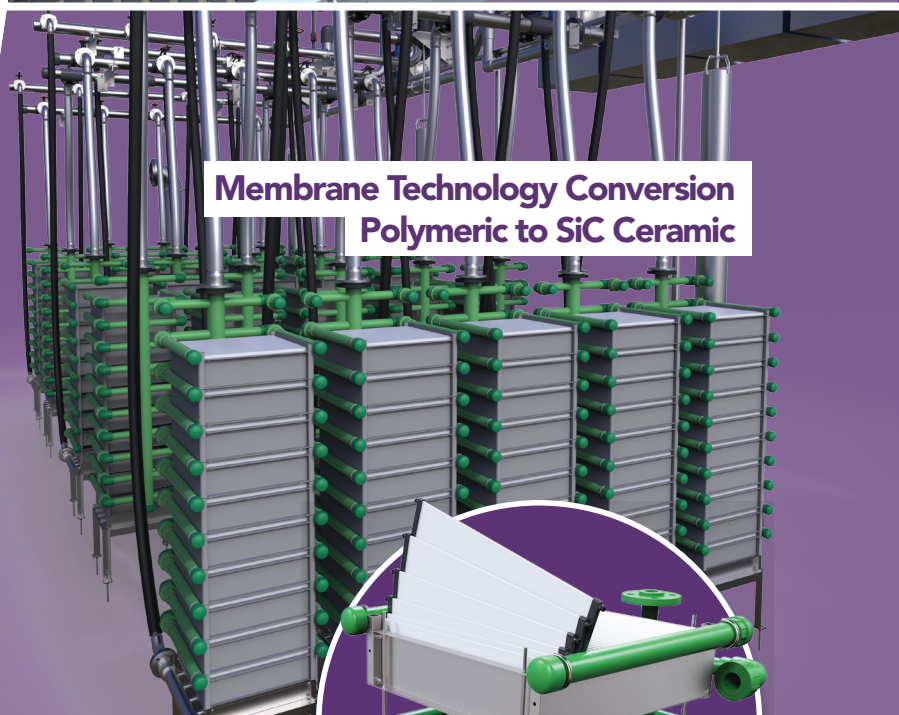
The Developer will continue to review technologies up until the time of purchase and build to make sure they have chosen the best technology and equipment for Herndon Farms.



**Fully Integrated MBR Systems
& Package Plant Solutions**



**Ovivo MBR
100% Silicon Carbide Membranes**



**Membrane Technology Conversion
Polymeric to SiC Ceramic**

REVOLUTIONIZING MBR SYSTEMS

microBLOX® MBR SYSTEMS



True ready-to-operate MBR Systems are available. These systems are delivered to the site and factory assembled with little or no interconnecting piping or ancillary equipment to install.

Branded as microBLOX, the facility design and layout is intended to provide low construction costs, low O&M, process stability, flexible design and operational ease. Contractor estimates indicate that systems may cost as much as 25-50% less due to the ready-to-operate design, reduced footprint, reduced concrete, reduced building, and overall simplicity.

However, one size does not fit all. For every project, we begin the design process by understanding client needs and identifying scope before ultimately tailoring a solution specific to the application through the use of modular building blox.

microBLOX® MBR SYSTEMS



3Z microBLOX®
< 75,000 GPD



4Z microBLOX®
15,000 GPD to
150,000 GPD



XL microBLOX®
150,000 GPD to
250,000 GPD

STANDARD FEATURES

- SiC Ceramic Membranes
- 6mm Coarse & 2mm Fine Screen
- Automated Re-screen
- Automated WAS
- Automated Maintenance Clean
- Access Stairs
- Grating or Sealed Covers with Access Points
- Walkway and Rails
- VFDs for Blowers and Pumps
- Portable Crane & Davits
- Disconnects and Lockouts
- Convenience Outlets
- TSS, Turbidity and DO Instrumentation
- Porch Lights
- Optional UV System
- Multiple Paint Colors

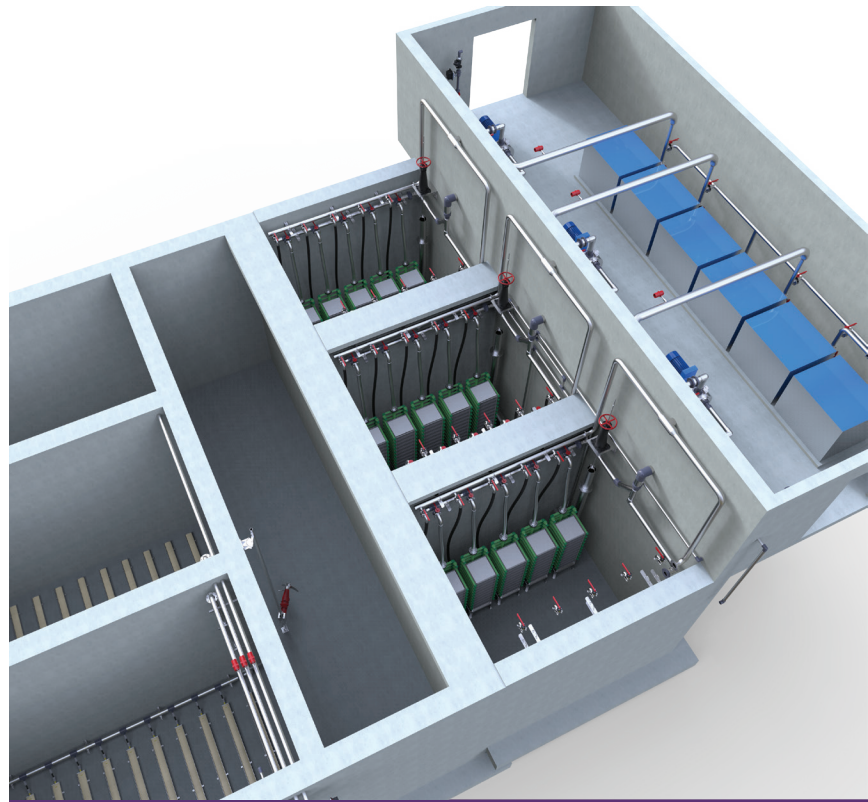
COMPLIANCE

- American Iron and Steel Act
- Seismic Rated to Category D
- NFPA 820
- UL Panel

INTEGRATED MBR SYSTEMS

Since 2001, Ovivo MBR has played a pivotal role in establishing and innovating submerged MBR technology in North America. Continuing on our technology and market advancement, Ovivo MBR is 100% dedicated to integrating Silicon Carbide (SiC) membrane technology into our MBR Systems.

The heart of the system is Ovivo's Ceramic Membrane Technology, comprised of hydrophilic Silicon Carbide UF/MF (0.1 μ) flat plate membranes which provides unmatched flux rate while also repelling negatively charged particles. The chemically inert membrane can operate in extreme environments such as a pH range from 1-14 and high sludge concentrations of 4% organic waste. The plates have a high resistance to chemicals, oxidants, and even ozone. The hydrophilic nature of the membranes allows the membrane basins to be shut down and drained without the addition of preservatives.



100% INTEGRATION WITH SILICON CARBIDE MEMBRANES



Life Cycle Commitment

Solid Design Practices

Early collaboration offers a solid, risk free, customized design



Seamless Project Execution

On time, on budget are key to the bottom line



Technical Services Obligation

When all others have moved on, Ovivo's services endure



THE SiC DIFFERENCE

WIDE OPERATIONAL WINDOWS • EXTENDED MEMBRANE LIFE

OPERATING LIMITS/CAPABILITIES

| Operating Parameter | Units | Silicon Carbide |
|---------------------|-----------|-----------------|
| TSS | mg/l | < 45,000 |
| Oil & Grease | mg/l | < 500 |
| Free Oil | mg/l | < 500 |
| pH | - | 1 - 14 |
| Temperature | °C | 1 - 80 |
| Backwash Pressure | psi | < 30 |
| Chlorine Tolerance | ppm hours | 5,000,000 |



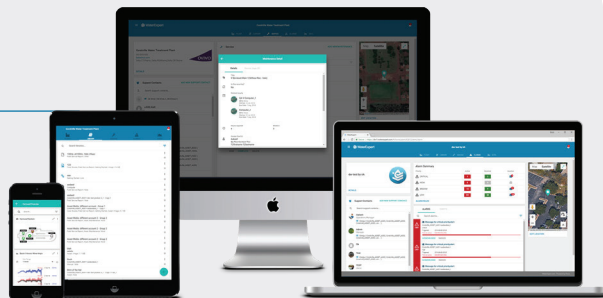
**MEMBRANE TECHNOLOGY
CONVERSION
SiC REPLACES POLYMERIC**



**ALL OF YOUR MANUALS,
ALL OF YOUR KNOWLEDGE,
ALL IN ONE PLACE.**

Get your team on the same page.
Upload and share documents & media.
Create and manage service logs and
maintenance schedules.

Learn more at WaterExpert.com



LEARN MORE!
Scan to view online.



1-855-GO-OVIVO

info@ovivowater.com
ovivowater.com

PES

PE

HOLLOW-FIBER

FLAT PLATE

PAN

FLAT SHEET

PS

HOLLOW-SHEET

FIBER-PLATE

PTFE

PVDF



ACHIEVING A NEW LEVEL OF PERFORMANCE IN MEMBRANE TECHNOLOGY

Highest Flux

Withstands the Harshesht Environments

Quick & Easy Cleaning for Full Recovery

Longest Life of Any Membrane



**Ideally suited for
Sludge Thickening,
High Rate MBR, Tertiary
Treatment and Wet Weather
Overflow Applications**

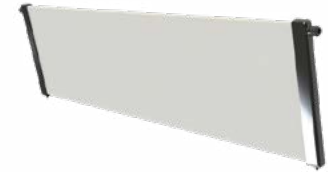
SILICON CARBIDE FLAT PLATE MEMBRANES

KEY HIGHLIGHTS

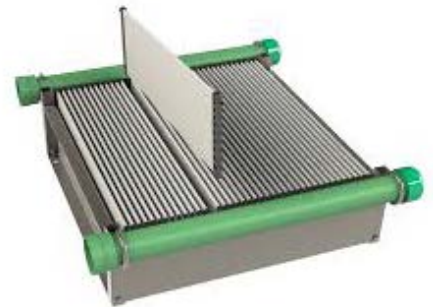
- 0.1 μm pore size
- Completely hydrophilic
- High chemical and temperature tolerance
- Submerged design
- Resistant to damage from debris, grit, and coarse material
- Easily re-wetted after drying

WHAT'S SO SPECIAL ABOUT SILICON CARBIDE?

Silicon Carbide's natural properties effortlessly attracts water while repelling foulants. This results in extremely high sustainable fluxes and the ability to operate reliably in high solids and oils, as well as under other difficult conditions that polymeric membranes have shied away from. Silicon carbide is also one of the hardest materials in the world and forms membrane plates that are solid as a brick and able to withstand the broadest range of temperature, pH, chemicals, and pressures. SiC membranes have achieved a new level of performance in some of the most demanding applications.



PLATE



MODULE

HOW IT'S MADE



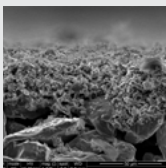
SiC POWDER

Silicon Carbide mixed into paste and extruded



SUBSTRATE

Extrusion fired at 2,000 °C to bind SiC grains



MEMBRANE LAYER

Membrane layer applied to substrate



SiC PLATE

0.1 micron SiC flat plate membrane



STACK

POTENTIAL APPLICATIONS



HIGH RATE MBR

SiC allows for operation at high MLSS, increasing MBR capacity within the same footprint



SLUDGE THICKENING

SiC expands the operating window for MBT, easier to recover from dewatering



TERTIARY TREATMENT

High flux, low footprint design with lower energy consumption than hollow fibers



WET WEATHER OVERFLOWS

CSO, SSO MBR peak flow, CAS peak flow. SiC can be completely dried, allowing for intermittent storm use



WITHSTANDS THE HARSHTEST ENVIRONMENTS

THE OVIVO DIFFERENCE

200+ YEARS OF HERITAGE • 100% FOCUSED ON WATER

OPERATING LIMITS/CAPABILITIES

| Operating Parameter | Units | Silicon Carbide |
|---------------------|-------|-----------------|
| TSS | mg/l | < 45,000 |
| Oil & Grease | mg/l | < 500 |
| Free Oil | mg/l | < 500 |
| pH | - | 1 - 14 |
| Temperature | °C | 1 - 80 |
| Backwash Pressure | psi | < 30 |
| Chlorine Tolerance | wt% | 1.0 |



CSO Results
(Raw Sewage)



**ALL OF YOUR MANUALS,
ALL OF YOUR KNOWLEDGE,
ALL IN ONE PLACE.**

Get your team on the same page.
Upload and share documents & media.
Create and manage service logs and
maintenance schedules.

Learn more at WaterExpert.com



LEARN MORE!
Scan to view online.



1-855-GO-OVIVO

info@ovivowater.com
ovivowater.com





Ovivo[®] Silicon Carbide Membrane Technology



Worldwide Experts in Water Treatment



ALL THE WATER WE HAVE
IS ALL THE WATER WE WILL HAVE.

It is our responsibility to treat, recover, and reuse it wisely.

Ovivo's mission is to provide sustainable and efficient water treatment solutions to our customers through expertise and innovation.

A large-scale center pivot irrigation system is shown in a lush green field under a blue sky with scattered white clouds. The system consists of a long metal arm supported by a central pivot point, with multiple smaller arms extending outwards, each ending in a wheel and a series of vertical risers that hold the irrigation pipes. The field is vibrant green, and the sky is a clear, bright blue with soft, white clouds.

LIMITLESS POSSIBILITIES

CHANGING THE LANDSCAPE OF MEMBRANE SYSTEMS

Silicon Carbide (SiC) represents a dramatic shift in membrane technology. With a unique set of material properties, SiC changes the perception of what a membrane is capable of doing.

SiC naturally draws water in while polymeric membranes have the tendency to repel water. Such a high affinity for water allows SiC to repel the most aggressive substances and materials, resulting in the highest sustainable flux rates.

SiC membranes allow water and wastewater treatment plants to achieve levels of performance previously thought impossible.



UNIQUE PROPERTIES

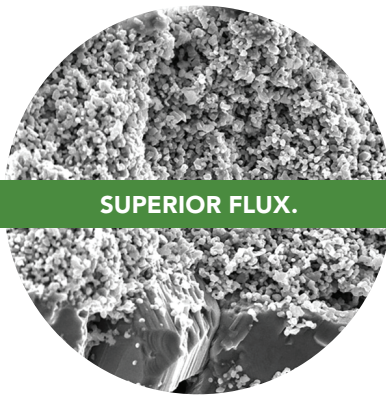
All of SiC's key properties work together to provide a technology that is 100% recoverable.



EASY TO CLEAN. LOW FOULING.

HYDROPHILIC

Natural and permanent hydrophilic properties ensure less chemical cleaning and indefinite dry storage.



SUPERIOR FLUX.

POROSITY

Operate at higher sustainable flux rates and solids concentration compared to other membrane formats.



DURABLE. RELIABLE.

MATERIAL STRENGTH

Both extremely hard and chemically inert material, SiC allows for aggressive cleaning methods.

PRODUCT OFFERING

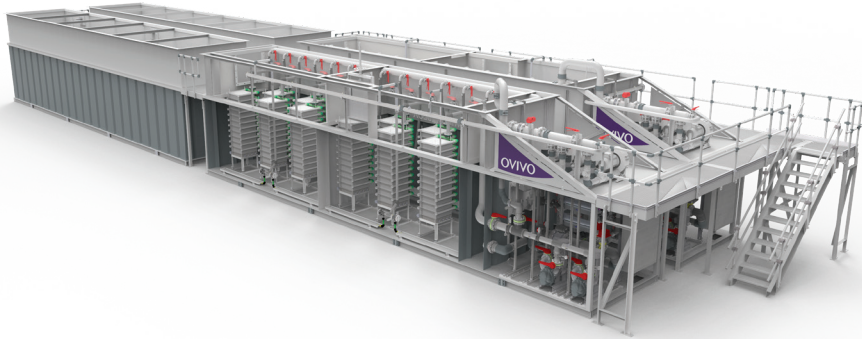
SiC's versatility – namely, it's wide operating window, ability to be dried and rewetted, and high chemical tolerance – provides a sophisticated operating experience with 100% sustained recoverability over the life of the membrane.

SiC membrane technology is the best available technology for membrane bioreactors (MBR), sludge thickening applications, wet weather treatment, and tertiary treatment systems.

| | MBR | WET WEATHER TREATMENT | TERTIARY TREATMENT | SLUDGE THICKENING |
|--|-----|-----------------------|--------------------|-------------------|
| PACKAGED PLANT OFFERING | ● | ● | ● | ● |
| CONVENTIONAL PLANT UPGRADES | ● | ● | ● | ● |
| REUSE QUALITY EFFLUENT | ● | ● | ● | ● |
| CSO/SSO TREATMENT | | ● | | |
| HIGH MLSS | ● | | | ● |
| NITROGEN REMOVAL | ● | | | ● |
| REDUCED SLUDGE HAULING AND SOLIDS DISPOSAL | ● | | | ● |
| TSS & TURBIDITY REMOVAL | ● | ● | ● | ● |
| PATHOGEN REMOVAL | ● | ● | ● | ● |
| ULTRA-LOW PHOSPHORUS REMOVAL | ● | | ● | |
| SMALL FOOTPRINT | ● | ● | ● | ● |
| REMOTE MONITORING CAPABILITIES | ● | ● | ● | ● |

MBR SYSTEMS

Revolutionizing MBR systems with unmatched performance, easier operation, and reuse quality effluent.



PRODUCTS

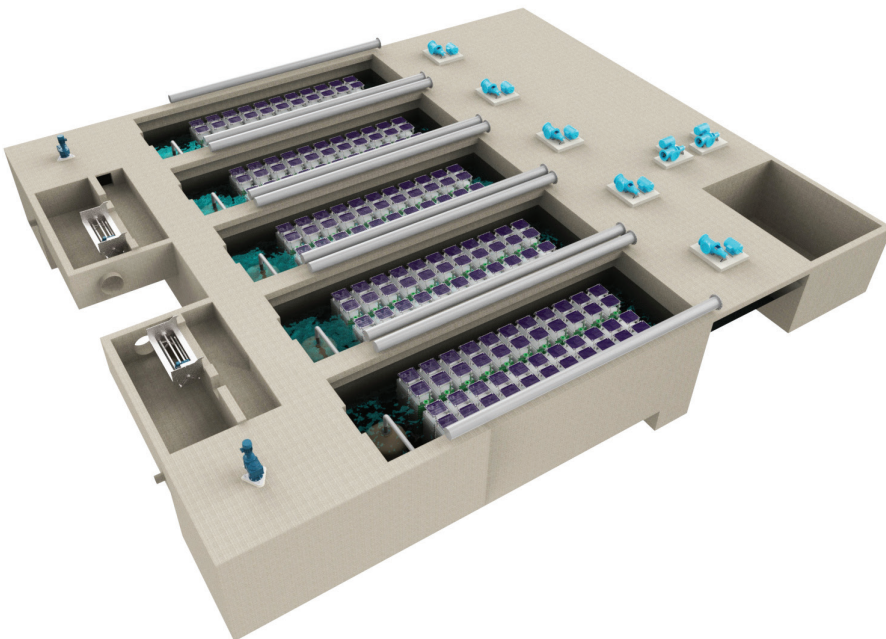
- Ovivo® MBR System
- microBLOX® Package Plant

ADVANTAGES

- Wide operational window allows systems to perform well under a broad range of harsh conditions.
- Extended membrane life: Durable, resistance to fatigue and chemicals, which sets up a long sustainable lifespan

WET WEATHER TREATMENT

Prevent pollutants being discharge into sensitive waterways with rapid treatment of CSO and SSO flows.



PRODUCTS

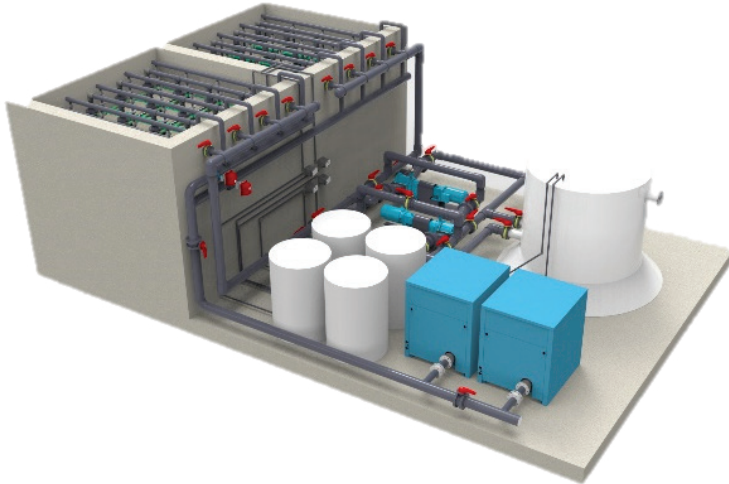
- Ovivo® RapidStorm™ Treatment
- stormBLOX™ Package Plant

ADVANTAGES

- Rapid treatment with instant high quality effluent
- Ground-breaking disinfection advantages with 6 Log fecal coliform removal
- Ideal for tight footprints

TERTIARY MEMBRANE FILTRATION

Advanced treatment to meet tight permit limits and for water reuse applications with completely new disinfection capabilities.



PRODUCTS

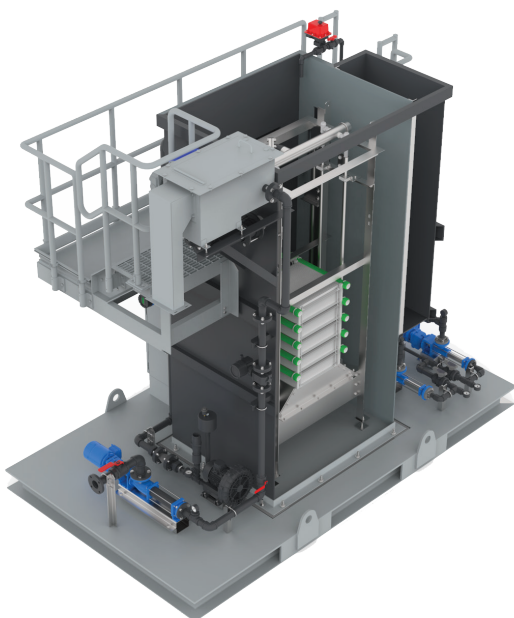
- Ovivo® Tertiary Treatment System
- ultraBLOX™ Package Plant

ADVANTAGES

- Ultra-low phosphorus removal
- Reuse
- Retrofit existing chlorine contact chambers

SLUDGE THICKENING SYSTEMS

Reduce hauling costs and polymer usage in a smaller footprint.



PRODUCT

- solidBLOX™ Package Plant

ADVANTAGES

- Easy to install & quick start-up
- Can thicken WAS up to 3% solids without polymers
- Reliable performance & reduced O & M



WHEREVER OVIVO TOUCHES WATER, WE SEEK TO ADD VALUE.

Ovivo was born from the need for clean water. We believe in challenging our people to learn, to grow, so we can provide the best experience for those seeking clean water. It's our stability combined with our fierce energy to do good that keeps us looking ahead. We want to do good work, with good people, and have fun while we're doing it.

To learn more about Silicon Carbide technology, visit us at ovivowater.com/sic

ovivowater.com