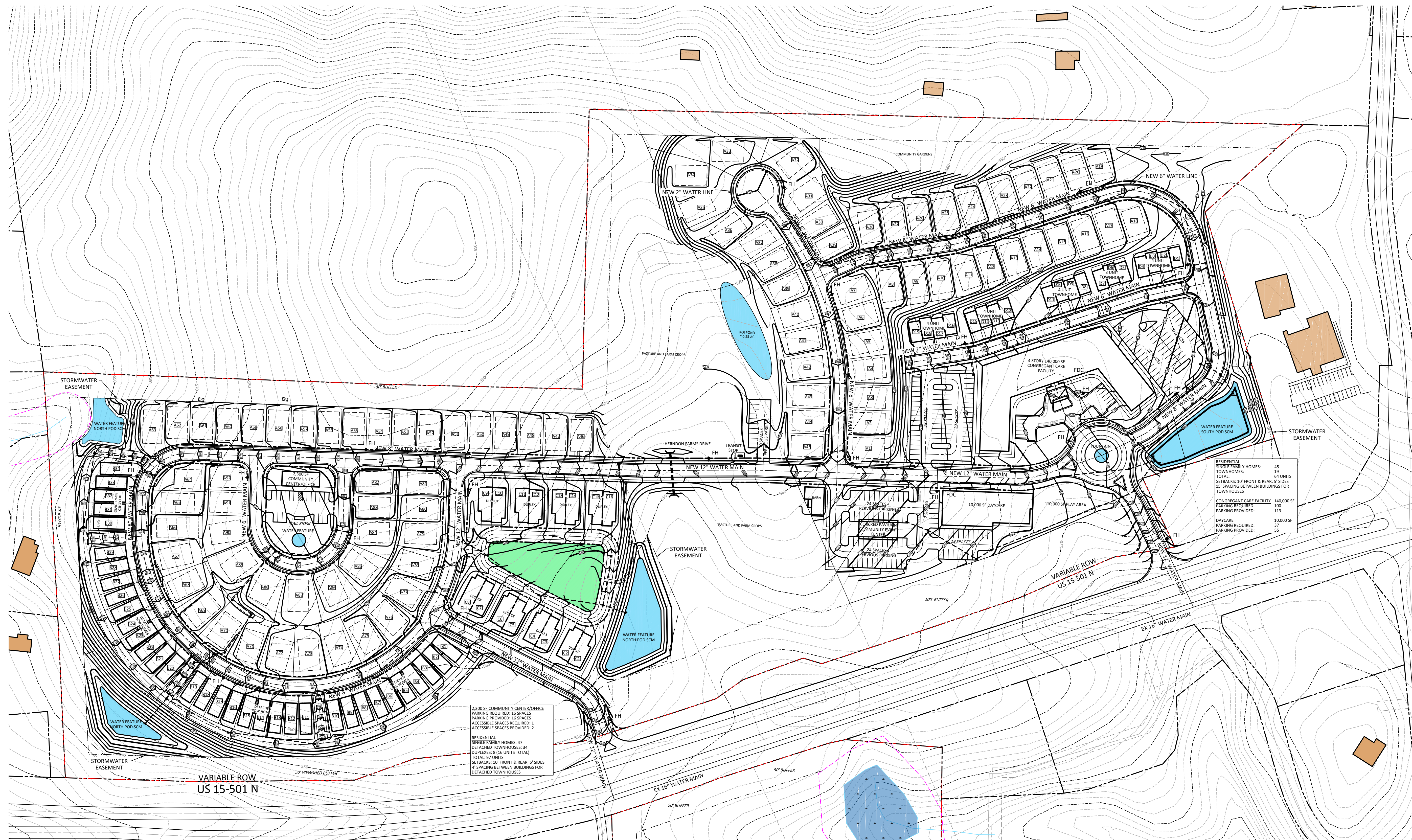


PO BOX 2077
APEX, NC 27502
TELEPHONE: 919 363-1422
FACSIMILE: 919 363-1477

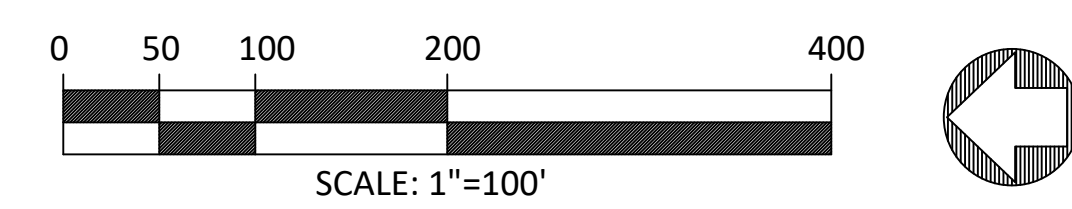


HERNDON FARMS CHATHAM COUNTY NORTH CAROLINA
WILLIAMS TOWNSHIP



RESIDENTIAL SINGLE FAMILY HOMES:	45
TOWNHOUSES:	25
TOTAL:	64 UNITS
SETBACKS: 10' FRONT & REAR, 5' SIDES	
15' SPACING BETWEEN BUILDINGS FOR TOWNHOUSES	
CONGREGANT CARE FACILITY:	140,000 SF
PARKING PROVIDED:	100
DAYCARE:	10,000 SF
PARKING PROVIDED:	37
	55

1,200 SF COMMUNITY CENTER/OFFICE	
PARKING REQUIRED:	10 SPACES
PARKING PROVIDED:	10 SPACES
ACCESSIBLE SPACES REQUIRED:	1
ACCESSIBLE SPACES PROVIDED:	2
RESIDENTIAL SINGLE FAMILY HOMES:	47
DETACHED TOWNHOUSES:	34
DUPLICATES: 8 (64 UNITS TOTAL)	
TOTAL: 97 UNITS	
4' SPACING BETWEEN BUILDINGS FOR DETACHED TOWNHOUSES	



DRAWN BY:	CHECKED BY:
KAH	TDS
DATE:	6/16/2021

REVISIONS	
1	8/6/2021

SHEET TITLE

OVERALL SITE - PRELIMINARY GRADING AND STORMWATER PLAN

SHEET NUMBER

SW1
1 OF 3

1. CHATHAM COUNTY REVIEW COMMENTS