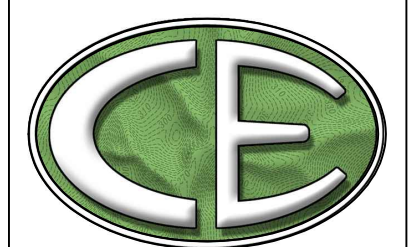


VICKERS VILLAGE COMPACT COMMUNITY SITE DETAILS CHATHAM COUNTY, NC JULY 2, 2021

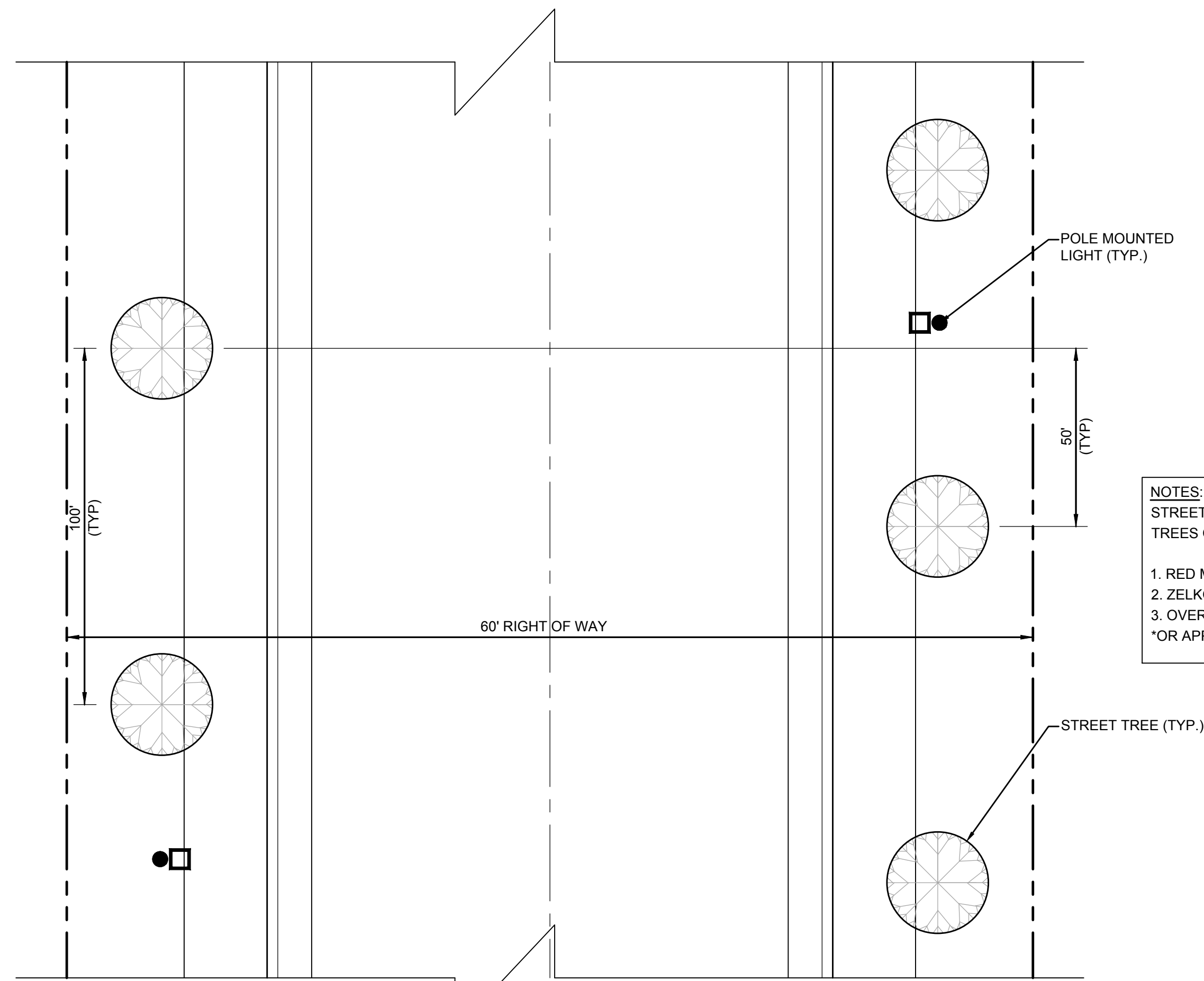


CE GROUP

301 GLENWOOD AVE. 220
RALEIGH, NC 27603
PHONE: 919-367-8790
FAX: 919-322-0032

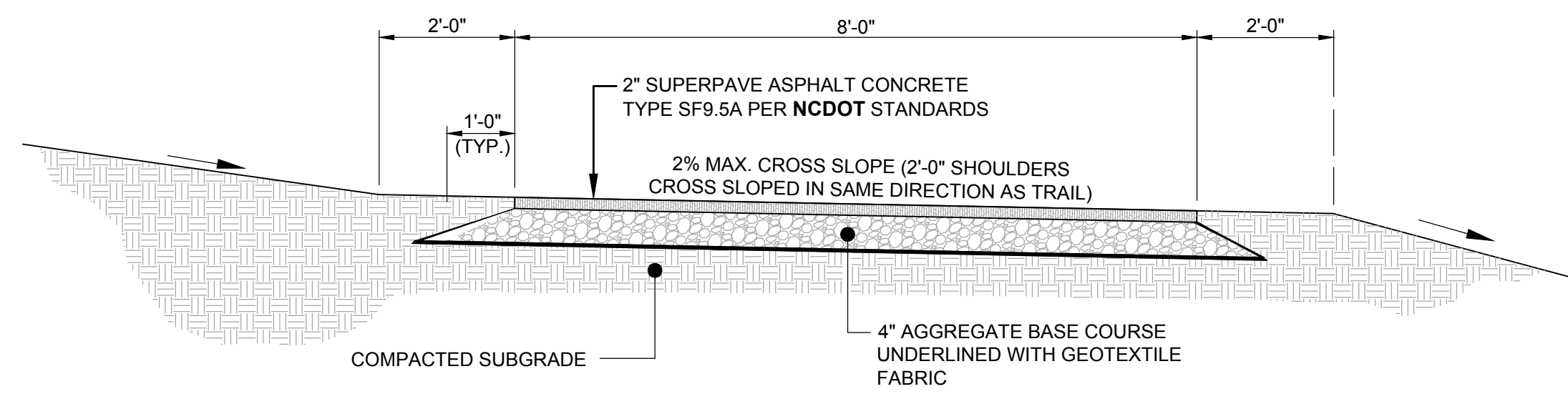
www.cegroupinc.com

License # C-1739



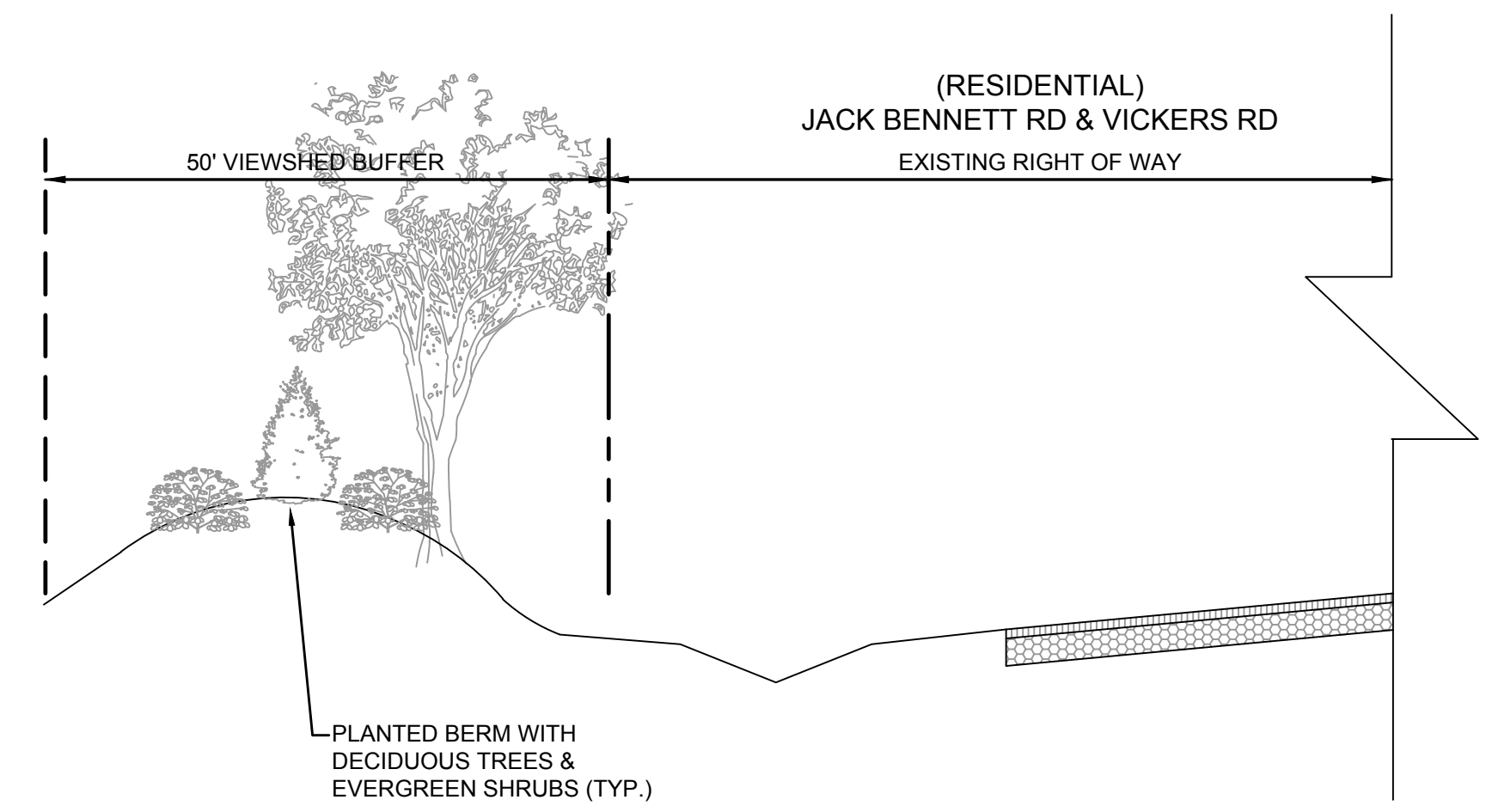
**STREET TREE DETAIL
(PLAN VIEW)**
NOT TO SCALE

- NOTES:**
STREET TREES WILL CONSIST OF THE FOLLOWING TREES OR APPROVED EQUAL:
1. RED MAPLE (ACER RUBRUM "OCTOBER GLORY")
 2. ZELKOVA (ZELKOVA SERRATA)
 3. OVERCUP OAK (QUERCUS LYRATA "OVERCUP")
- *OR APPROVED EQUAL

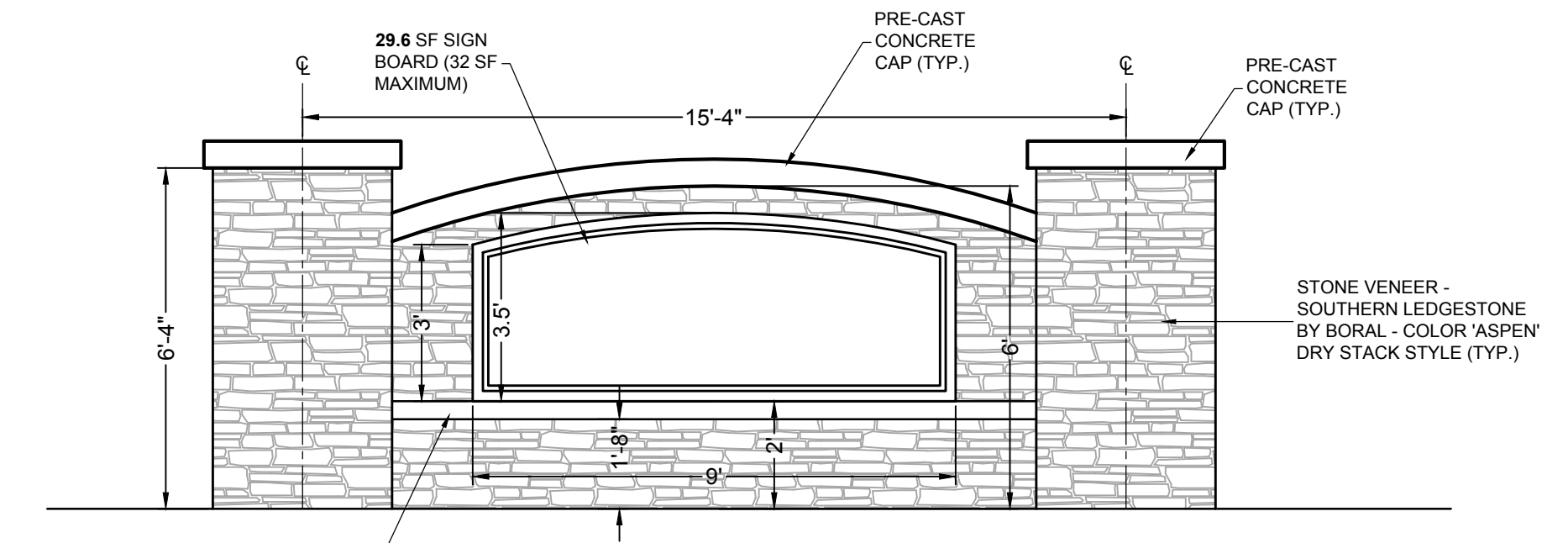


- NOTES:**
1. CONTRACTOR IS RESPONSIBLE FOR RE-ESTABLISHING ALL SLOPES DISTURBED BY CONSTRUCTION.
 2. NO ABOVE GROUND UTILITIES OR UTILITY SURFACE COVERS/PLATES/MANHOLES SHALL BE LOCATED WITHIN TRAIL AND SHALL BE MINIMUM 2 FEET FROM THE EDGE OF TRAIL. RAISED MANHOLES SHALL BE MINIMUM 4 FEET FROM TRAIL EDGE.
 3. ALL TRAILS SHALL BE LOCATED MINIMUM 5 FEET FROM THE BACK OF CURB OR EDGE OF PAVEMENT.
 4. SIDE SLOPES SHALL NOT EXCEED 3:1. CUT & FILL SLOPES SHALL TIE INTO EXISTING SLOPES TO CREATE AN EVEN TRANSITION.
 5. CROSS SLOPE TYPICALLY TO LOW SIDE BUT CROSS SLOPE TO INSIDE OF DOWNHILL CURVES, WITH GRADUAL TRANSITIONS BETWEEN ANY CROSS SLOPE DIRECTION CHANGES.
 6. TRAIL TO BE LOCATED AWAY FROM ALL TREE ROOT ZONES.

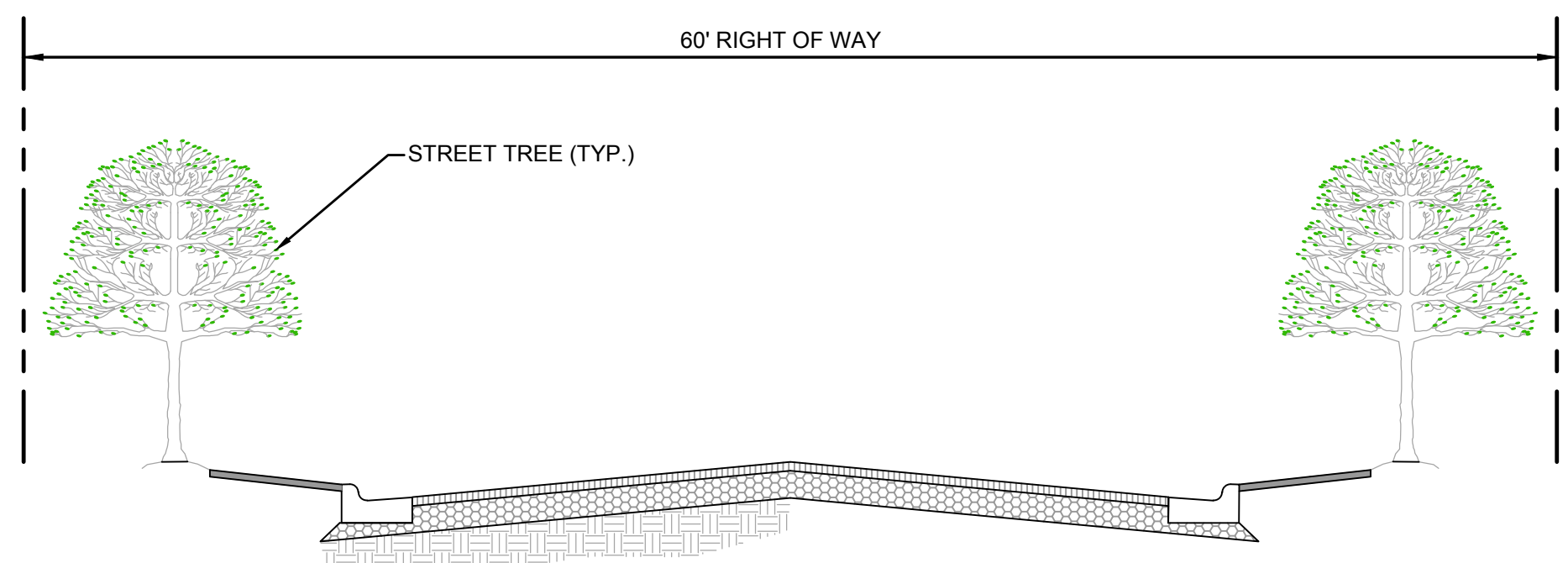
STANDARD 8-FT ASPHALT MULTI-USE TRAIL
NOT TO SCALE



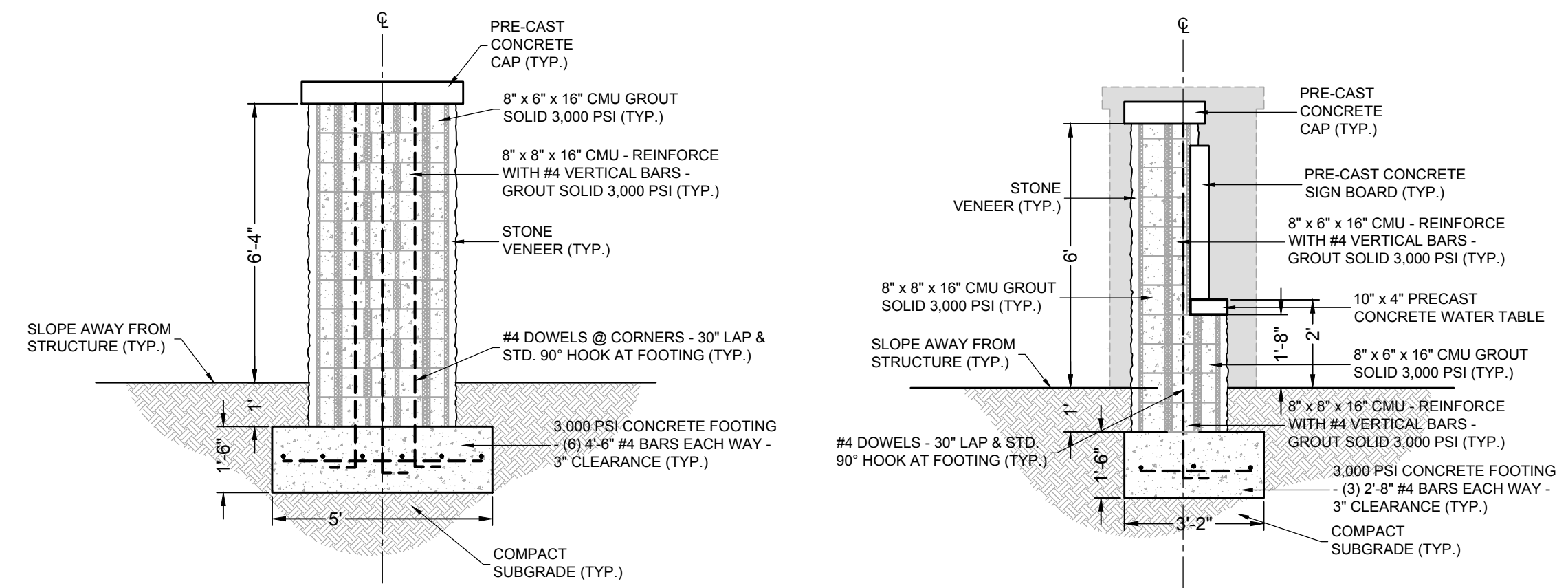
**RESIDENTIAL VIEWSHET DETAIL
(PROFILE VIEW)**
NOT TO SCALE



SIGN ELEVATION
1" = 3"

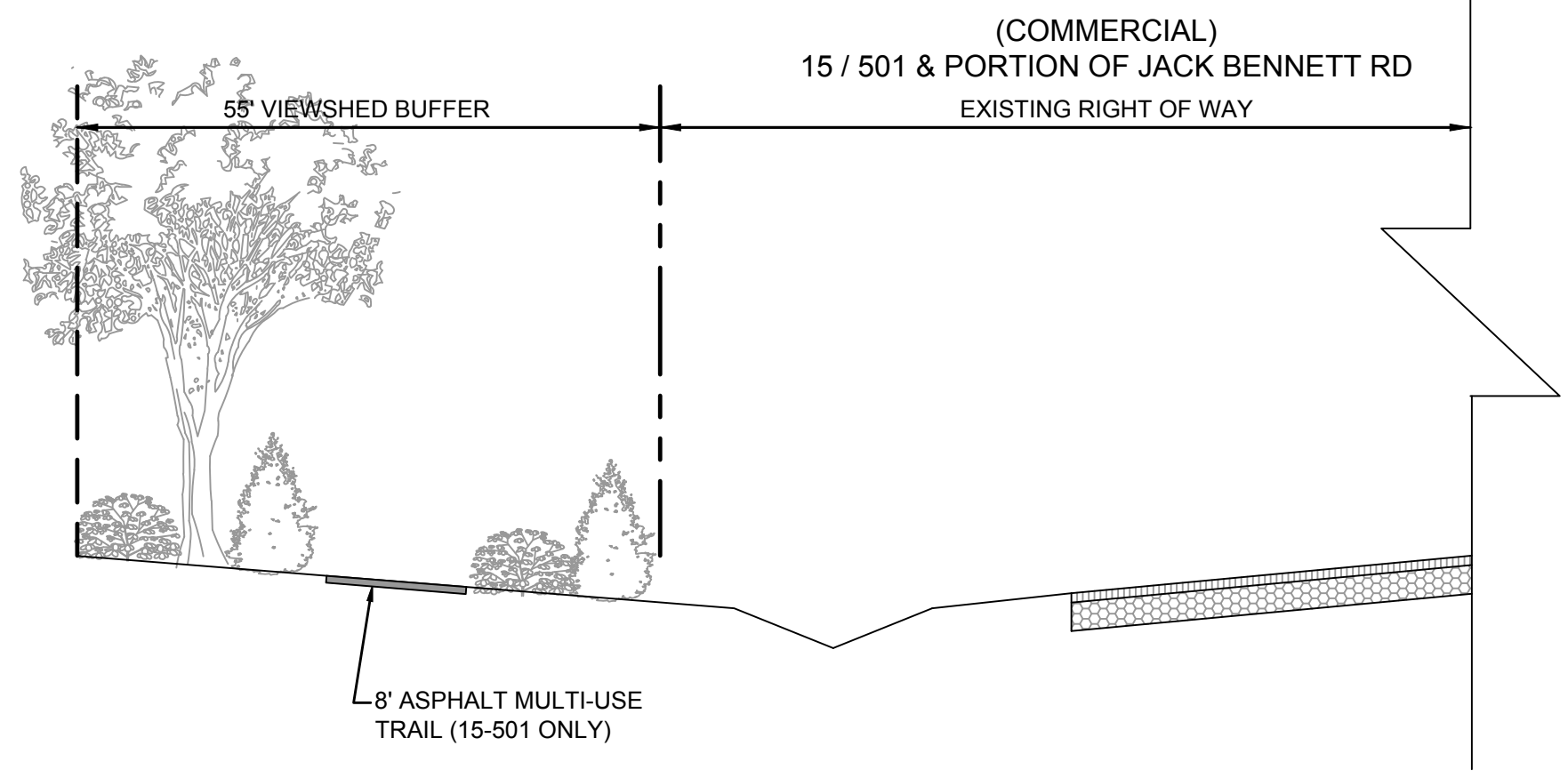


**STREET TREE DETAIL
(PROFILE VIEW)**
NOT TO SCALE

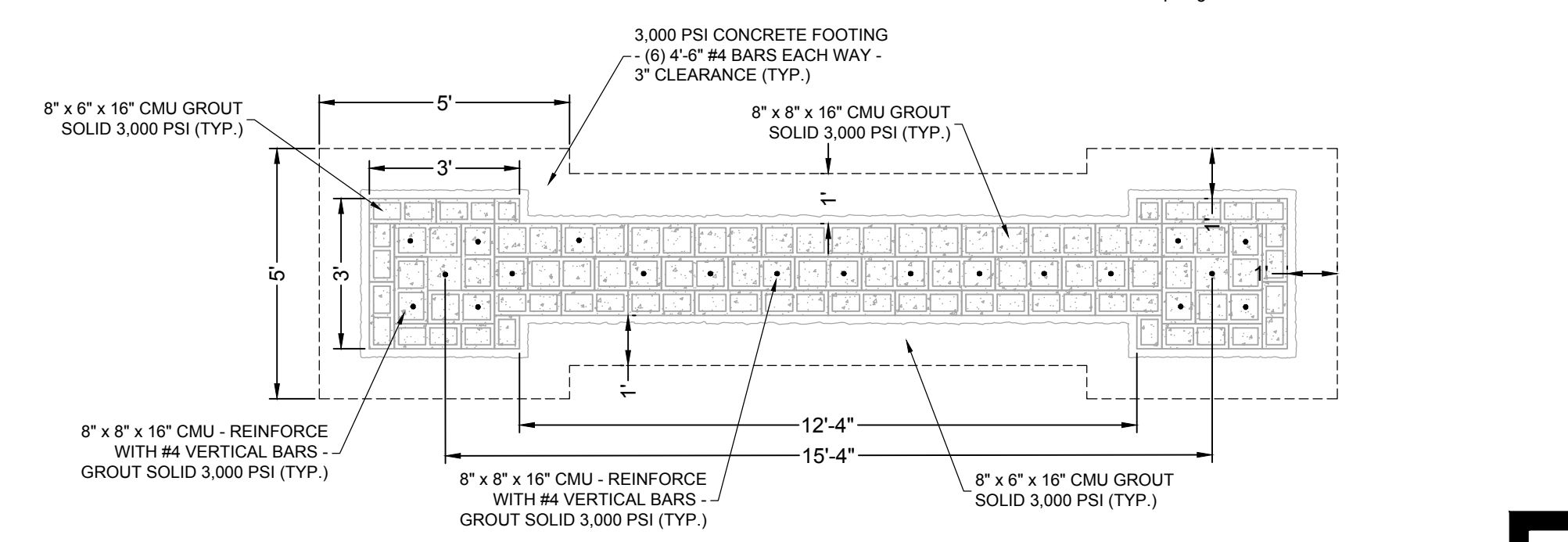


COLUMN DETAIL
1" = 3"

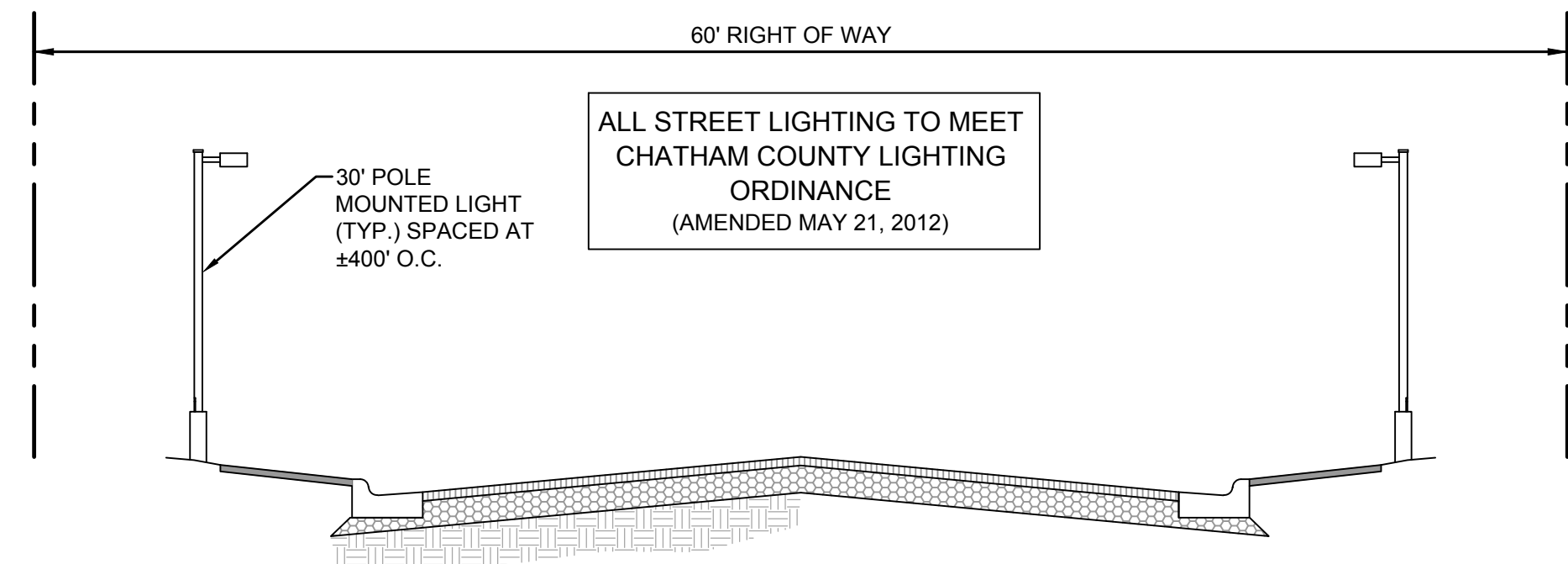
SIGN PANEL DETAIL
1" = 3"



**COMMERCIAL VIEWSHED DETAIL
(PROFILE VIEW)**
NOT TO SCALE



BLOCK PLAN & FOOTING DETAIL
1" = 3"



STREET LIGHTING DETAIL (PROFILE VIEW)
NOT TO SCALE