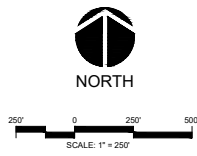
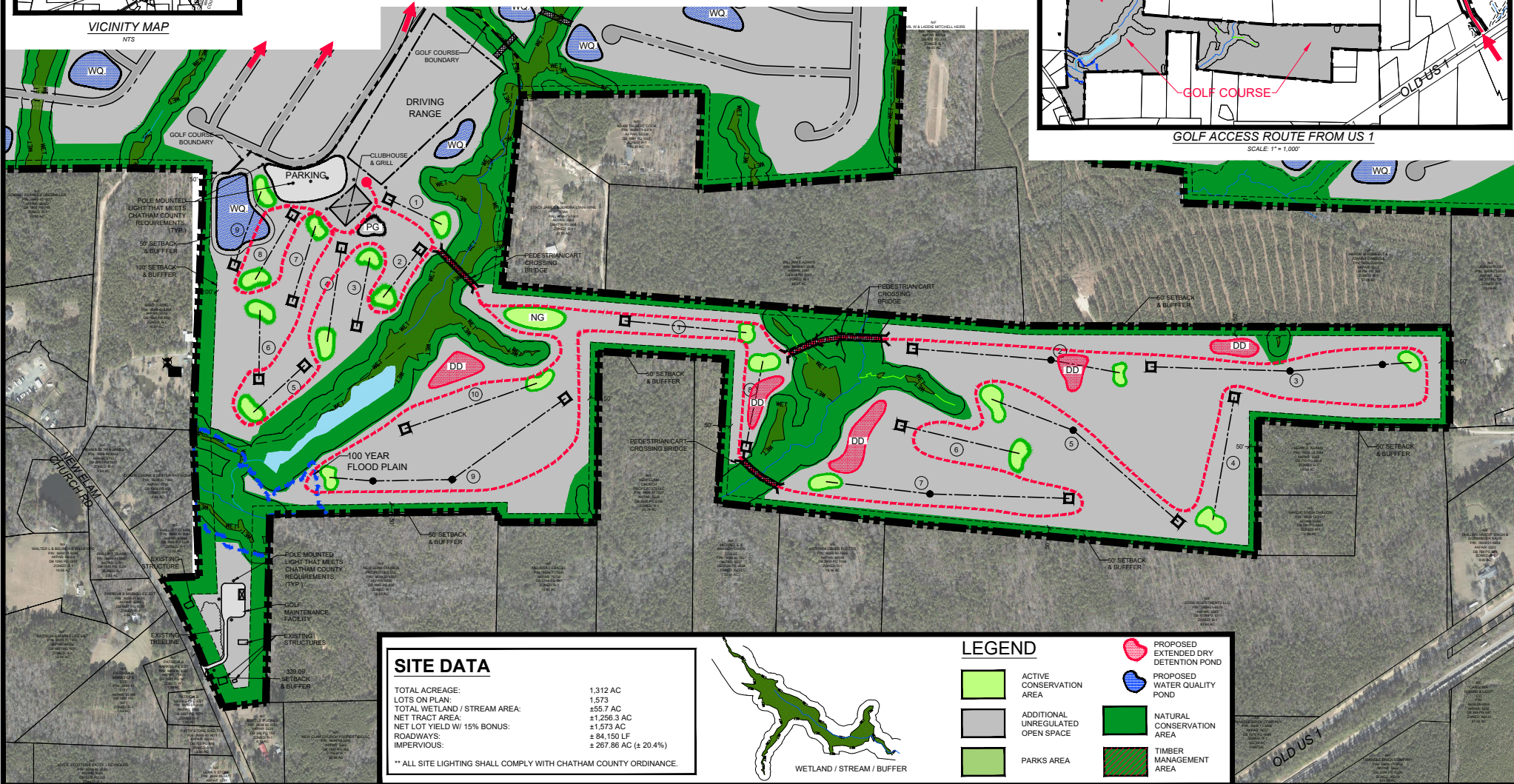
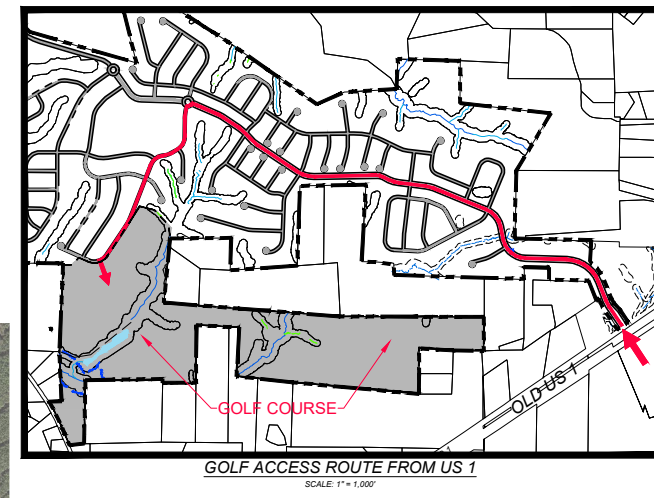


VICINITY MAP  
NTS



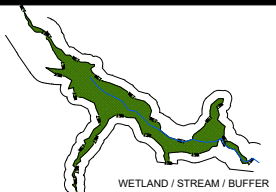
# THE CONSERVANCY AT JORDAN LAKE GOLF COURSE SITE PLAN

CHATHAM COUNTY, NC  
JUNE 4, 2021

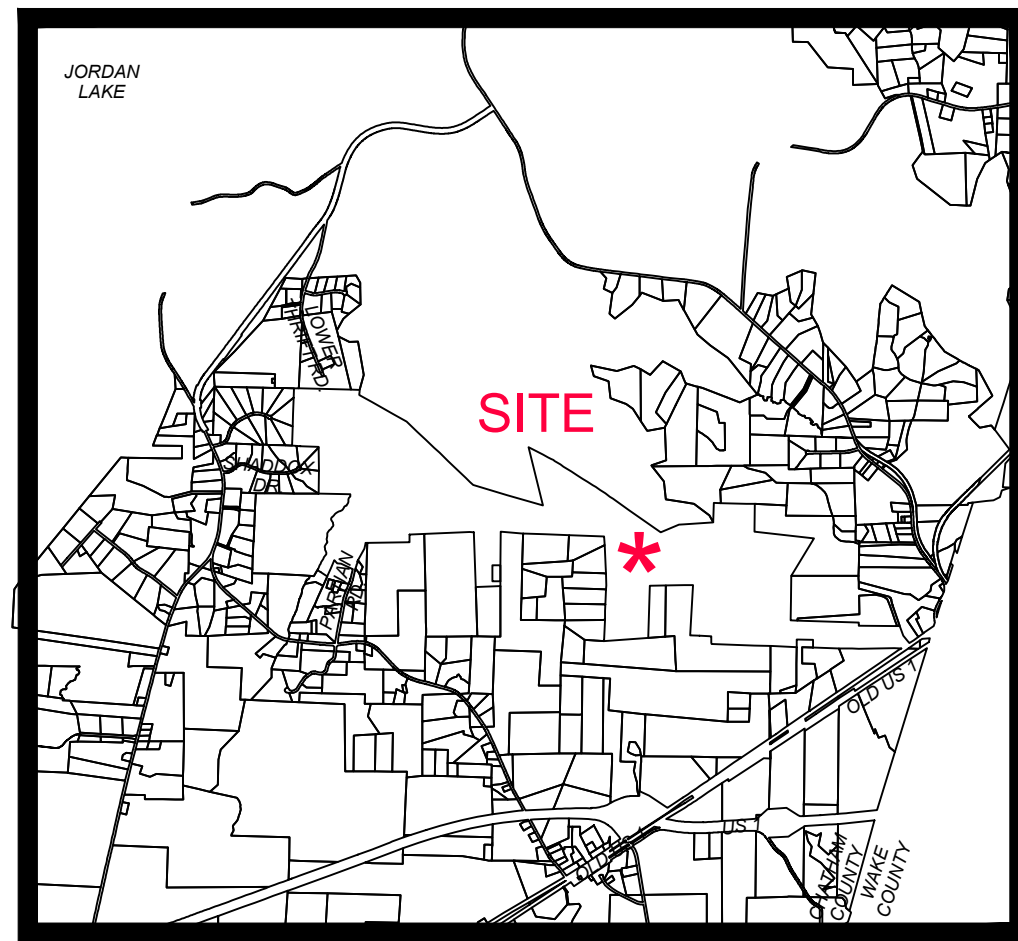


SITE DATA	
TOTAL ACREAGE:	1,312 AC
LOTS ON PLAN:	1,573
TOTAL WETLAND / STREAM AREA:	±55.7 AC
NET TRACT AREA:	±1,256.3 AC
NET LOT YIELD W/ 15% BONUS:	±1,573 AC
ROADWAYS:	± 54,150 LF
IMPERVIOUS:	± 267.86 AC (± 20.4%)

\*\* ALL SITE LIGHTING SHALL COMPLY WITH CHATHAM COUNTY ORDINANCE.

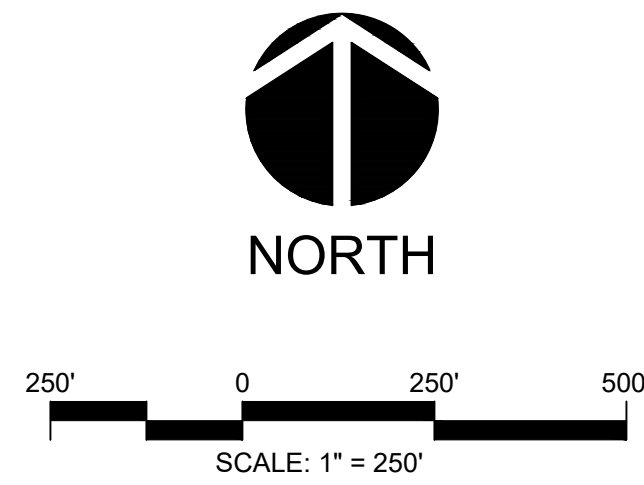


LEGEND	
	ACTIVE CONSERVATION AREA
	ADDITIONAL UNREGULATED OPEN SPACE
	PARKS AREA
	PROPOSED EXTENDED DRY DETENTION POND
	PROPOSED WATER QUALITY POND
	NATURAL CONSERVATION AREA
	TIMBER MANAGEMENT AREA



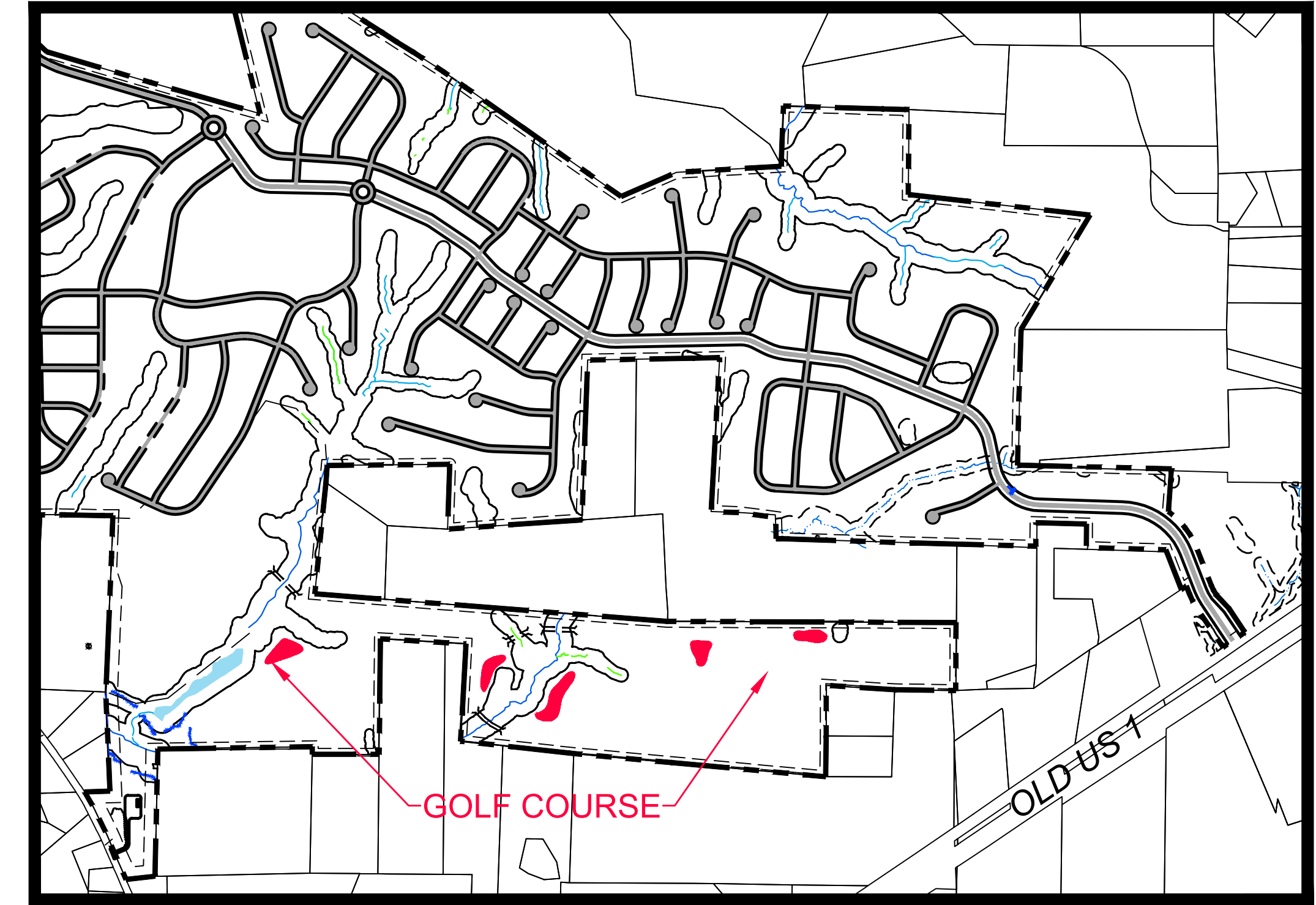
VICINITY MAP  
NTS

**CE GROUP**  
301 GLENWOOD AVE 220  
RALEIGH, NC 27603  
PHONE: 919-367-8790  
FAX: 919-322-0032  
  
www.cegroupinc.com  
License # C-1739



# THE CONSERVANCY AT JORDAN LAKE GOLF COURSE STORMWATER PLAN

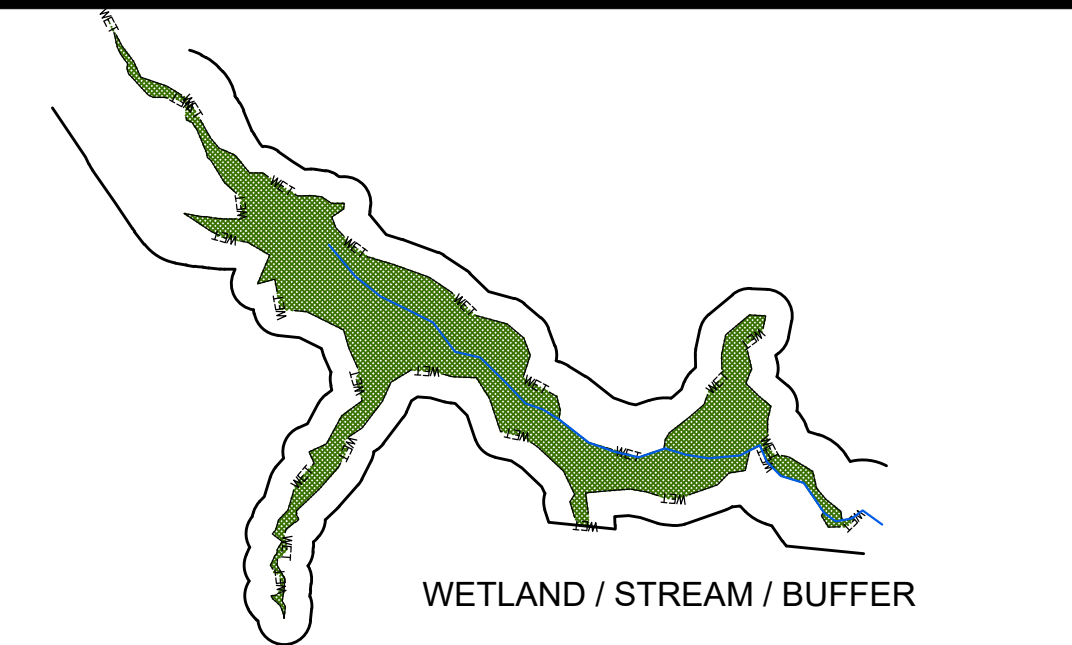
CHATHAM COUNTY, NC  
JUNE 4, 2021



GOLF ACCESS ROUTE FROM US 1  
SCALE: 1" = 1,000'



SITE DATA	
TOTAL ACREAGE:	1,312 AC
LOTS ON PLAN:	1,573
TOTAL WETLAND / STREAM AREA:	±55.7 AC
NET TRACT AREA:	±1,256.3 AC
NET LOT YIELD W/ 15% BONUS:	±1,573 AC
ROADWAYS:	± 84,150 LF
IMPERVIOUS:	± 267.86 AC (± 20.4%)



LEGEND	
	ACTIVE CONSERVATION AREA
	ADDITIONAL UNREGULATED OPEN SPACE
	PARKS AREA
	PROPOSED EXTENDED DRY DETENTION POND (DD)
	PROPOSED WATER QUALITY POND (WQ)
	NATURAL CONSERVATION AREA
	TIMBER MANAGEMENT AREA

1) FINAL LOCATION OF STORMWATER FEATURES TO BE DETERMINED AT CONSTRUCTION DRAWING PHASE  
2) ALL STORMWATER FEATURES WILL BE DESIGNED IN ACCORDANCE WITH CHATHAM COUNTY REGULATIONS

OLD US 1