

SITE DATA:

SITE AREA: ± 75.9 AC
 TOTAL LOTS: ± 31 LOTS
 AVERAGE LOT SIZE: ± 1.89 AC
 OPEN SPACE: ± 11.6 AC
 LENGTH OF ROADS: ± 4,049 LF
 LENGTH OF ACCESS DRIVE: ± 1,023 LF

LEGEND:

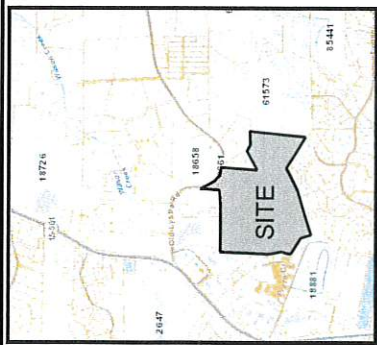
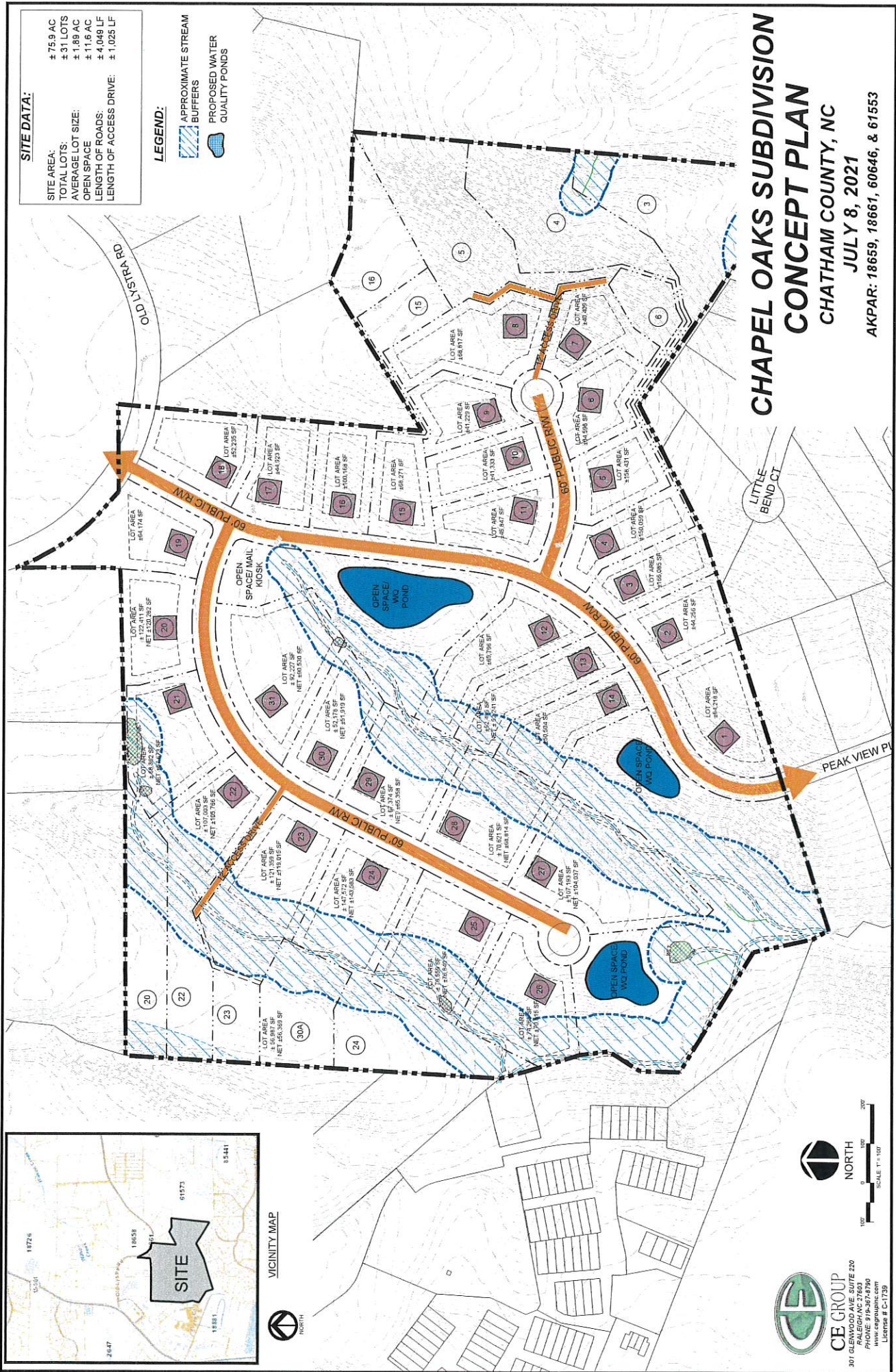
APPROXIMATE STREAM BUFFERS
 PROPOSED WATER QUALITY PONDS

CHAPEL OAKS SUBDIVISION CONCEPT PLAN

CHATHAM COUNTY, NC

JULY 8, 2021

AKPAR: 18659, 18661, 60646, & 61553



VICINITY MAP



NORTH



SCALE 1" = 100'



CE GROUP
 301 GLENWOOD AVE, SUITE 220
 RALEIGH, NC 27603
 www.cegroupinc.com
 License # C-1739