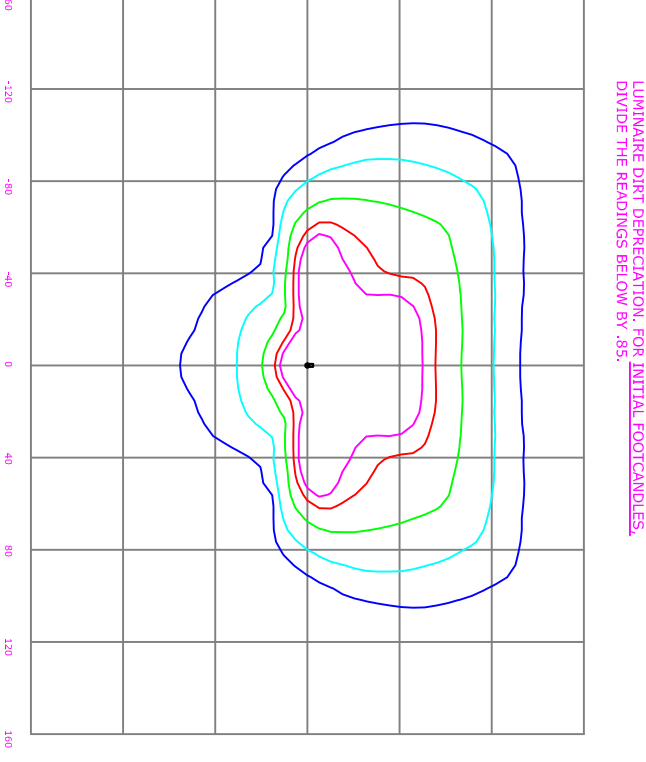
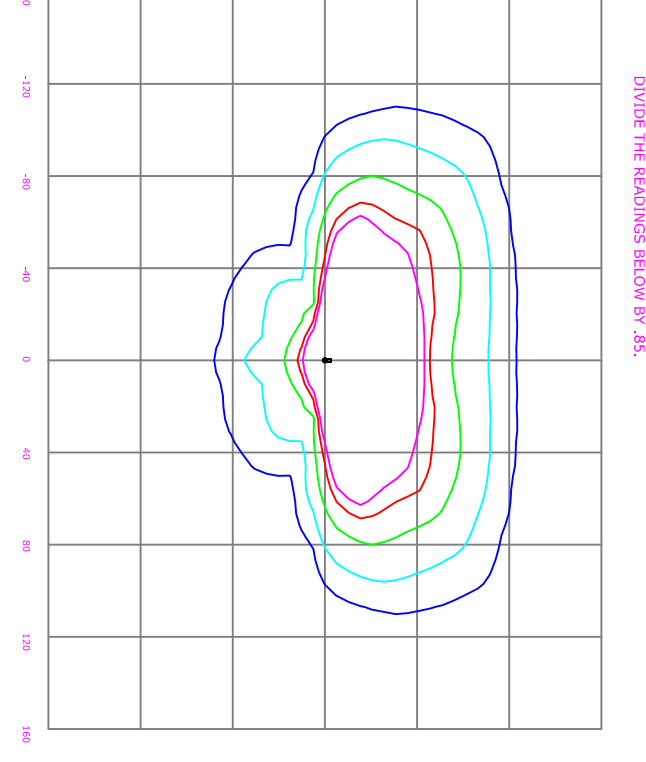
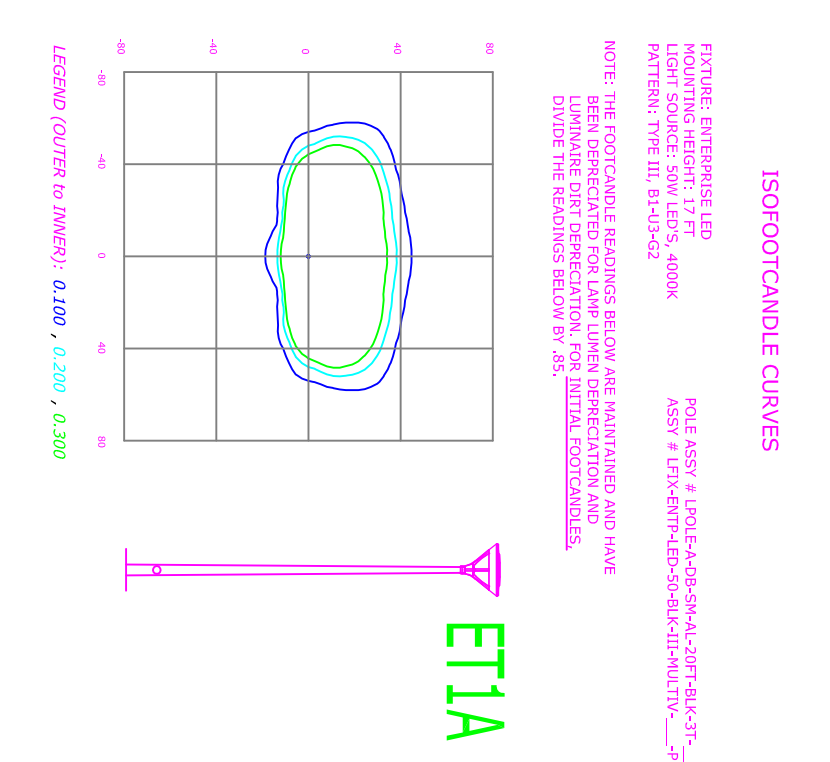
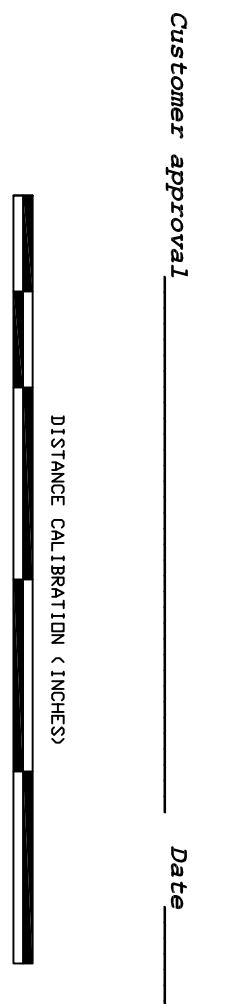


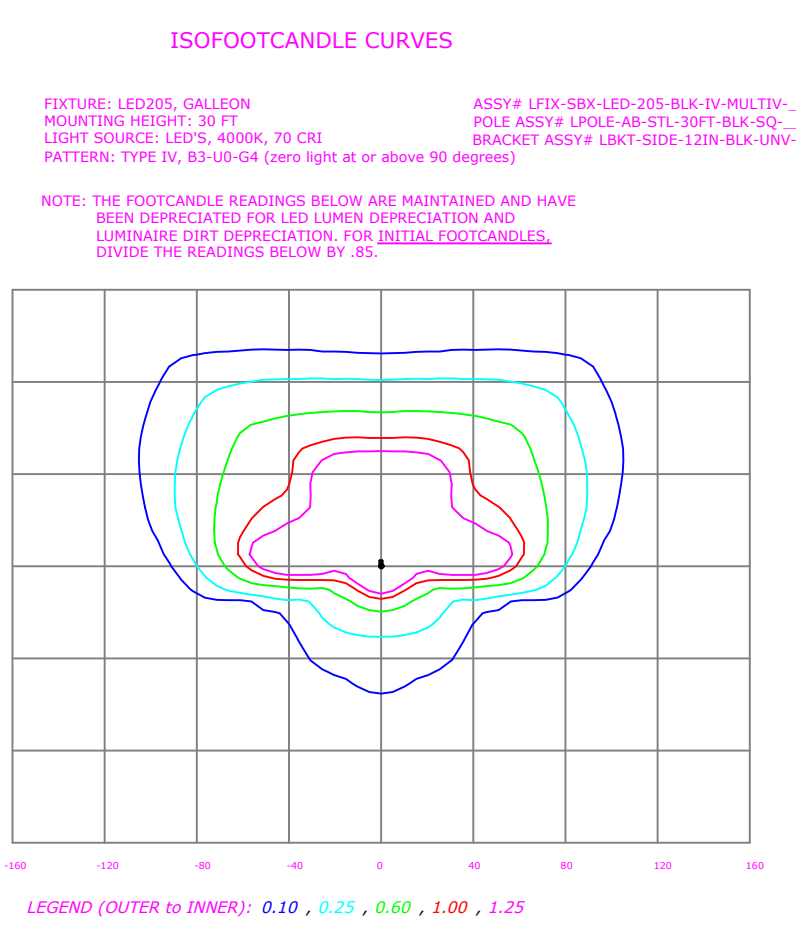
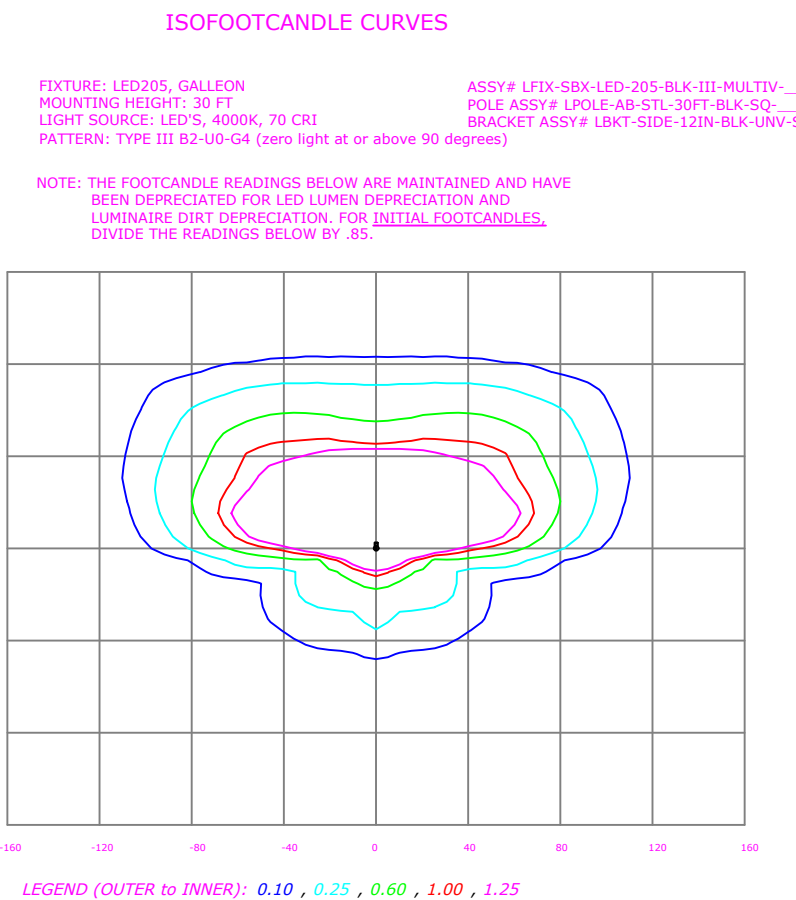
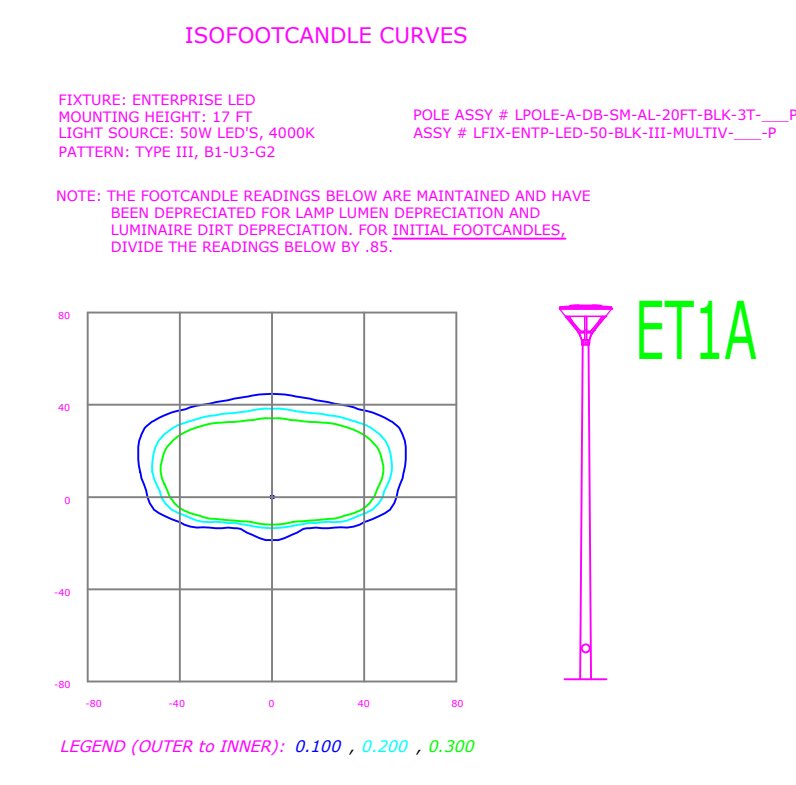
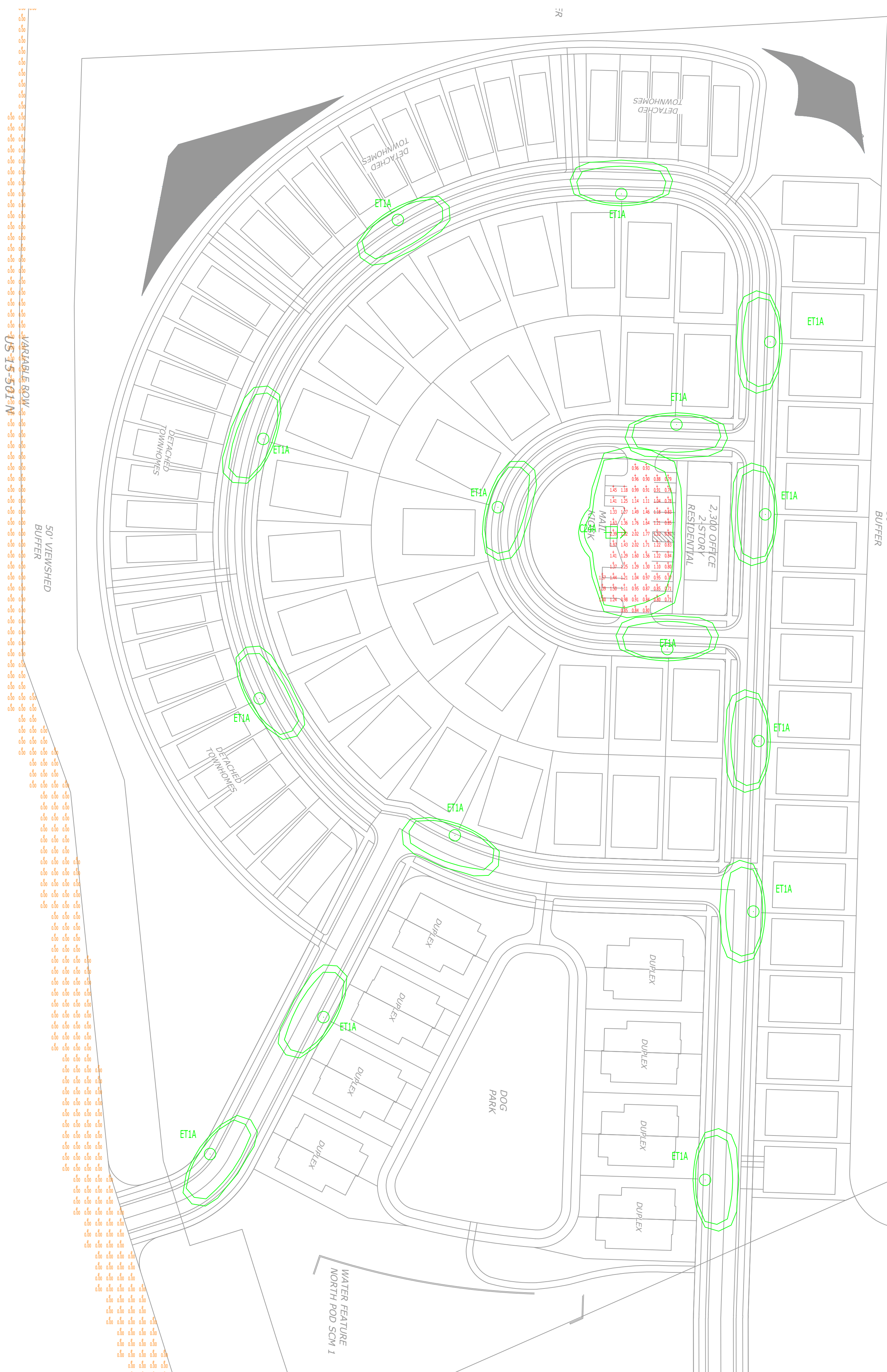
LIGHTING DESIGN TOLERANCE
 The calculated footcandle light levels in this lighting design are predicted values and are based on specific information that has been supplied to Duke Energy Progress. Any inaccuracies in the supplied information, differences in luminaire installation, lighted area, or lighting from sources other than listed in this design may produce different results from the predicted values. Normal tolerances of voltage, lamp output, and ballast and luminaire manufacture will also affect results.



Fixture	Quantity	Height (ft)	Beam Spread (ft)	Beam Angle (deg)	Footcandle @ 100ft	Footcandle @ 200ft	Footcandle @ 300ft	Footcandle @ 400ft	Footcandle @ 500ft
C23A	1	10	10	30	1.0	0.25	0.11	0.06	0.04
C24A	1	10	10	30	1.0	0.25	0.11	0.06	0.04
C24B	1	10	10	30	1.0	0.25	0.11	0.06	0.04

PROPRIETARY & CONFIDENTIAL
 This document together with the concepts and designs presented herein, presented as an instrument of service, is the sole property of Duke Energy Progress, and is intended only for the specific purpose and prospective client as stated in the title block of this drawing. Any use, copying, reproduction or dissemination of the design, drawings, or any information contained herein by the manufacturer or distributor is expressly prohibited and shall not be permitted absent prior written consent from, and payment of, Duke Energy Progress. Duke Energy Progress disclaims any liability or responsibility for any unauthorized use of or reliance on this document.

HERNDON FARMS
 Chatham County, NC
 SITE LIGHTING PLAN
 DEP LIGHTING SOLUTIONS
 Designed by _____
 Reviewed by G. Steffen
 Date 09/15/2020
 Description LED 205W Streetbox 8 50w Enterprise
 Drawing No. 19-01508 Sht. 2 OF 2

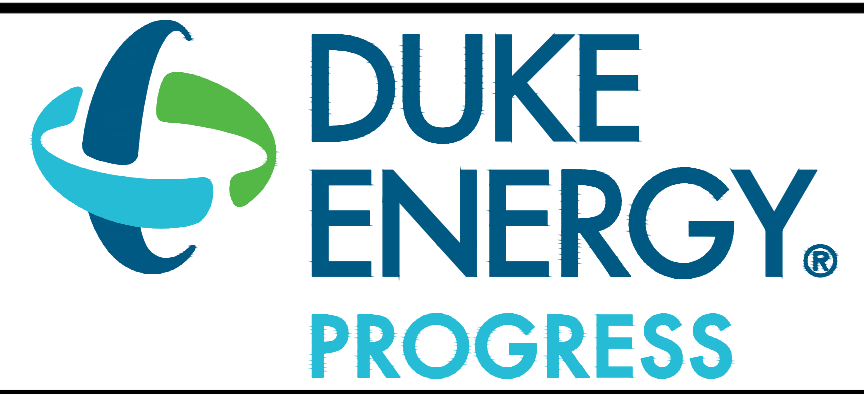
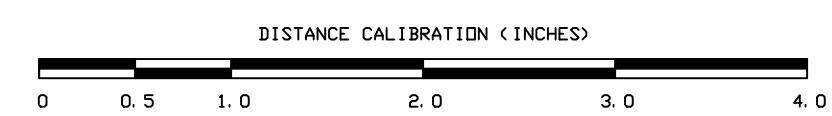


CALCULATION SUMMARY									
AREA NAME	CONNECTIONS	ZONE TYPE	F.FWS	CSWK	LOSSUP	F.FUG	NAVA	MIN	MAXIMUM / MINIMUM
Parking	17.24, 0.0007, 1.01E	Property Line	864	10.00	<<>	1.54	0.22	0.44	9.71 / 1.53
Power & Eng			2653	10.00	<P>	0.00			N/A / N/A

Equipment List						
ITEM	DESCRIPTION	LAMP	LUMENS	MOUNTING HEIGHT	SPACING	QTY
C23A	LED 205w Shoebox - Type III - 4000K Black Square Metal Pole	4000K Type III	21184	30 FT HT Cooper SB	0.85	1
C24A	LED 205w Shoebox - Type IV - 4000K Black Square Metal Pole	4000K Type IV	20555	30 FT HT Cooper SB	0.85	9
C24B	LED 205w Shoebox - Type IV - 4000K Black Square Metal Pole	4000K Type IV	20555	30 FT HT Cooper SB	0.85	2
ET1A	LED 50w Enterprise Black Style A Pole	4000K Type III	7668	17 FT HT DIRECT BURY	0.85	31

LIGHTING DESIGN TOLERANCE
The calculated footcandle light levels in this lighting design are predicted values and are based on specific information that has been supplied to Duke Energy Progress. Any inaccuracies in the supplied information, differences in luminaire installation, lighted area geometry including elevation differences, reflective properties of surrounding surfaces, obstructions (foliage or otherwise) in the lighted area, or lighting from sources other than listed in this design may produce different results from the predicted values. Normal tolerances of voltage, lamp output, and ballast and luminaire manufacture will also affect results.

Customer approval: _____ Date: _____



PROPRIETARY & CONFIDENTIAL
This document together with the concepts and designs presented herein, presented as an instrument of service, is the sole property of Duke Energy Progress, and is intended only for the specific purpose and prospective client as stated in the title block of this drawing. Any use, copying, reproduction or disclosure of the drawing, design or any information contained herein by the prospective customer or other entities, including without limitation, architects, engineers, or equipment manufacturers is hereby expressly prohibited, and shall not be permitted absent prior written consent from, and payment of compensation to, Duke Energy Progress. Duke Energy Progress disclaims any liability or responsibility for any unauthorized use of or reliance on this document.

HERNDON FARMS Chatham County, NC	
SITE LIGHTING PLAN	
Designed by	DEP LIGHTING SOLUTIONS
Reviewed by	G. Sterken Scale 1" = 60'
Date	09/15/2020 Size "Arch D"
Description	LED 205w Shoebox & LED 50w Enterprise
Drawing No.	19-0150B Sht. 1 OF 2