

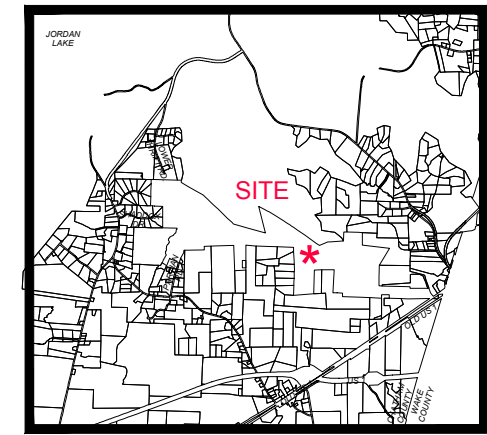
THE CONSERVANCY AT JORDAN LAKE SITE PLAN

CHATHAM COUNTY, NC
APRIL 7, 2021

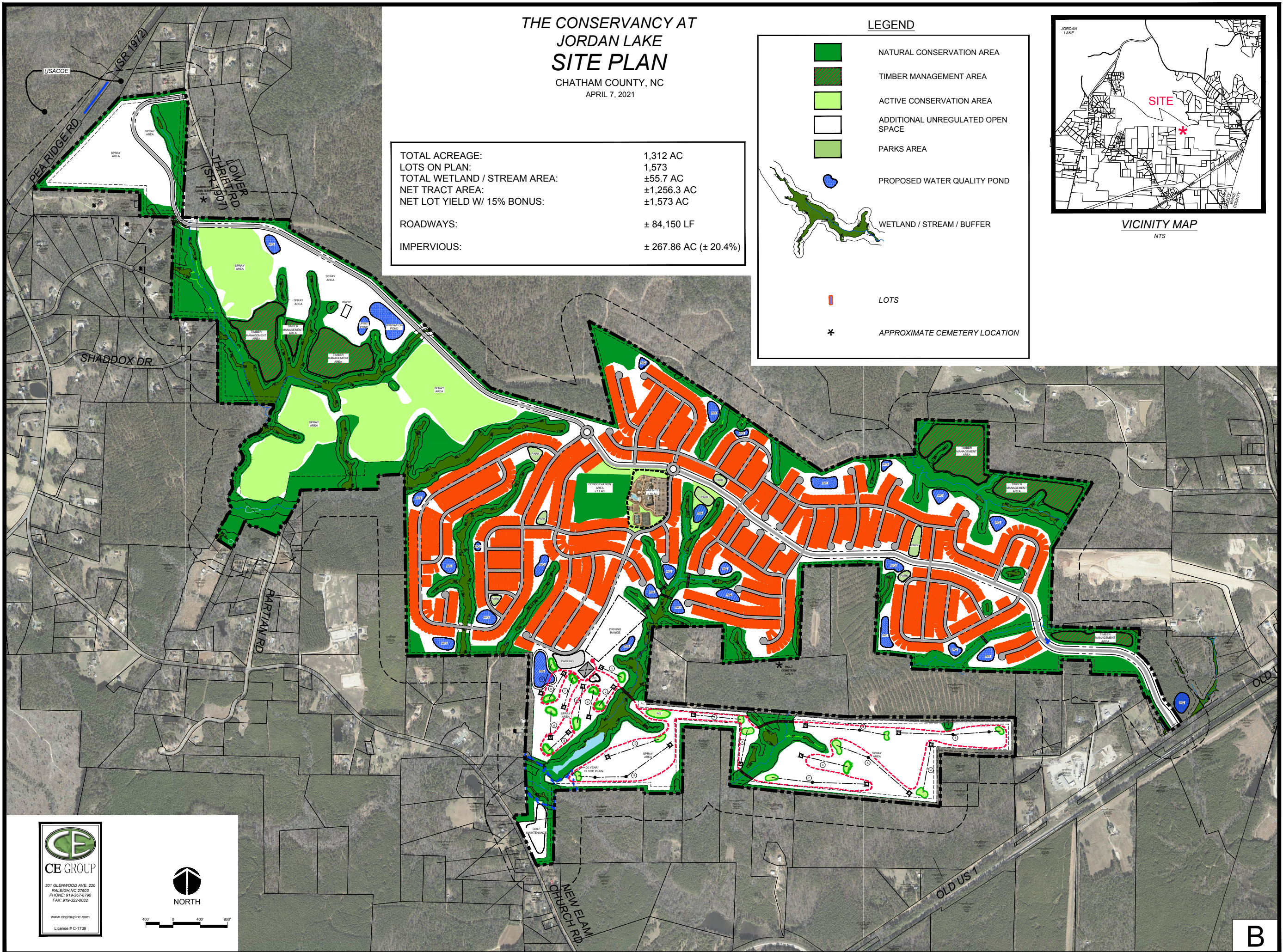
TOTAL ACREAGE:	1,312 AC
LOTS ON PLAN:	1,573
TOTAL WETLAND / STREAM AREA:	±55.7 AC
NET TRACT AREA:	±1,256.3 AC
NET LOT YIELD W/ 15% BONUS:	±1,573 AC
ROADWAYS:	± 84,150 LF
IMPERVIOUS:	± 267.86 AC (± 20.4%)

LEGEND

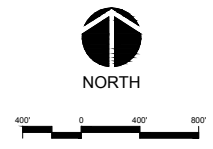
- NATURAL CONSERVATION AREA
- TIMBER MANAGEMENT AREA
- ACTIVE CONSERVATION AREA
- ADDITIONAL UNREGULATED OPEN SPACE
- PARKS AREA
- PROPOSED WATER QUALITY POND
- WETLAND / STREAM / BUFFER
- LOTS
- APPROXIMATE CEMETERY LOCATION



VICINITY MAP
NTS



CE GROUP
301 GLENWOOD AVE. 220
RALEIGH, NC 27603
PHONE: 919-327-9790
FAX: 919-322-0032
www.cegroupinc.com
License # C-1739



B