



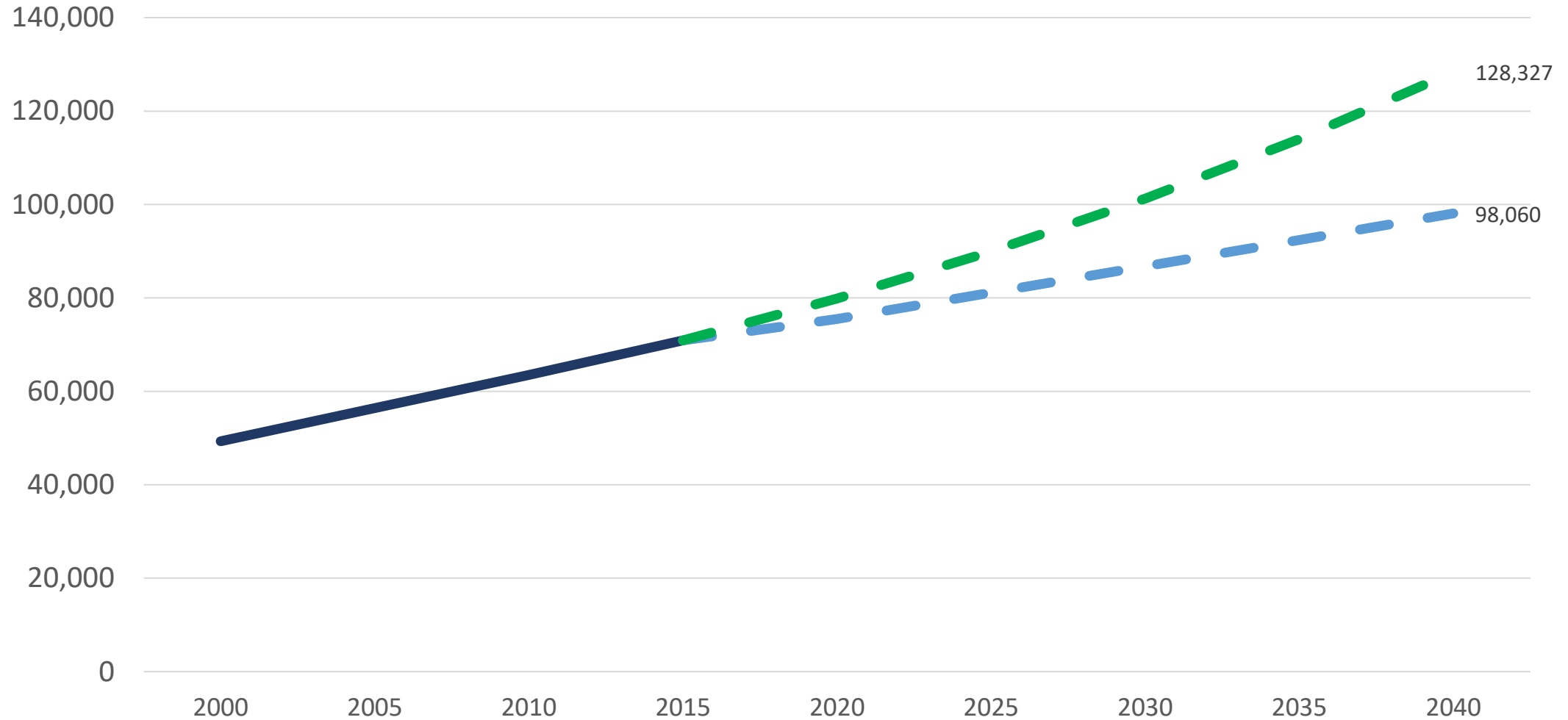
PLAN CHATHAM

working together to preserve & progress



View draft document at www.chathamnc.org/comprehensiveplan

POPULATION PROJECTIONS



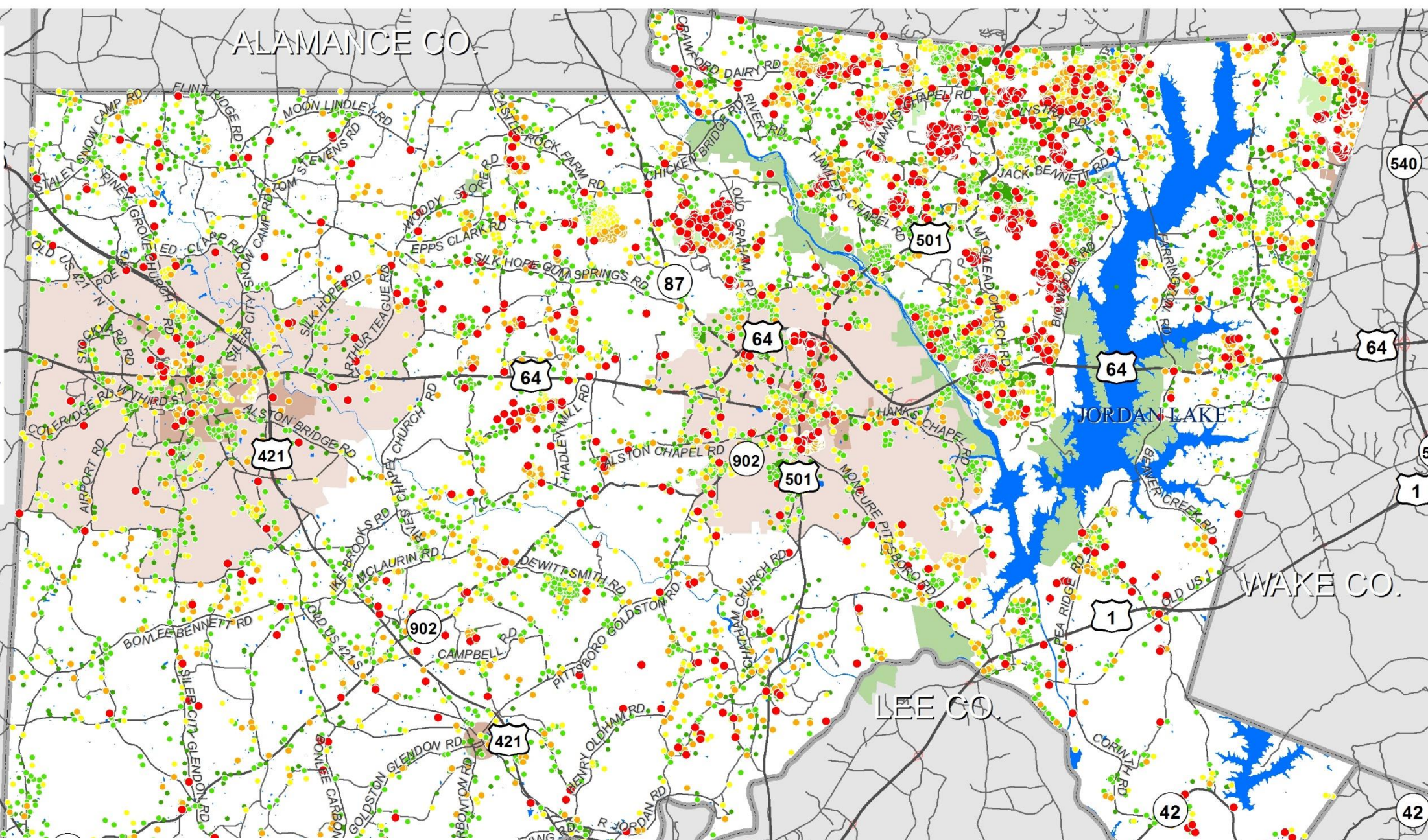
— Historical Growth — A) NC Office of State Budget Management — D) Linear Population Growth 2000-2014 (2.4% AGR)

Year Built

- 1980 - 1990
- 1991 - 2000
- 2001 - 2005
- 2006 - 2010
- 2011 - 2015

Context Features

- Freeway
- Highway
- Major Arterial
- Minor Arterial
- Ramp
- Lake, Pond, River
- Public Land
- Golf Course
- ETJ



RESIDENTIAL GROWTH MAP

THE PLANNING PROCESS

THE PLANNING PROCESS

1

County-Assessment + Draft Goals

“Chatham Today”

Assessment of current and emerging conditions, identification of issues and opportunities, and development of goals

2

Develop Initial Concept Plan + Policy Ideas

“Shaping Chatham’s
Future”

Development of future land use concepts and policy ideas

3

Refine Concept Plan + Policy Framework

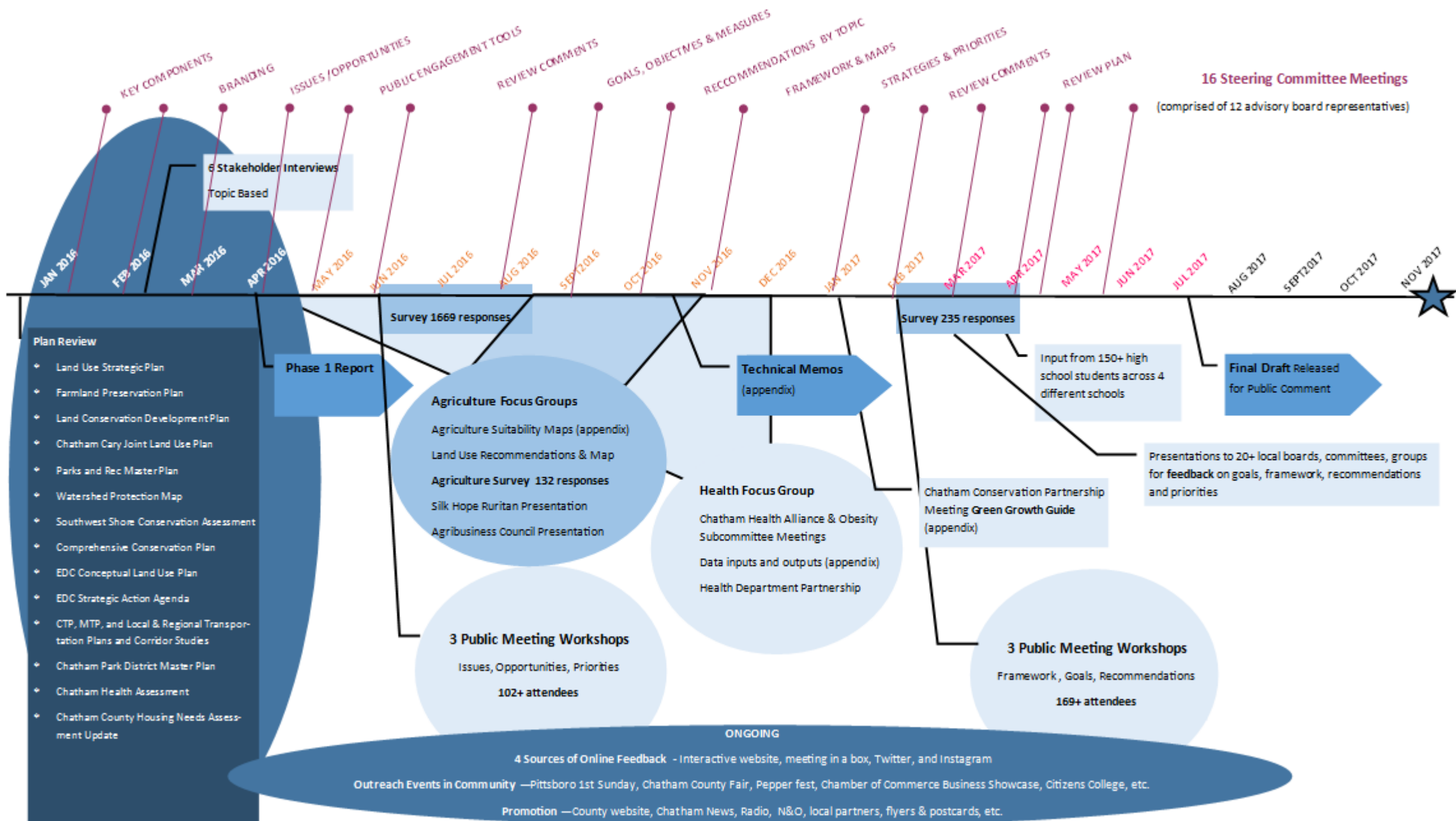
“Putting the Plan into
Action”

Refine concepts and policies and draft action steps and strategies

4

Plan Documentation + Adoption

Collection of plan components into a final plan report document to be presented for adoption



GOALS + OBJECTIVES

Preserve the rural character and lifestyle of Chatham County.

Preserve, protect, and enable agriculture and forestry.

Promote a compact growth pattern by developing in and near existing towns, communities, and in designated, well planned, walkable mixed use centers.

Diversify the tax base and generate more quality, in-county jobs to reduce dependence on residential property taxes, create economic opportunity and reduce out-commuting.

Conserve natural resources.

Provide recreational opportunities.

Provide infrastructure to support desired development and support economic and environmental objectives.

Become more resilient by mitigating, responding, and adapting to emerging threats.

Provide equitable access to high-quality education, housing and community options for all.

Foster a healthy community.

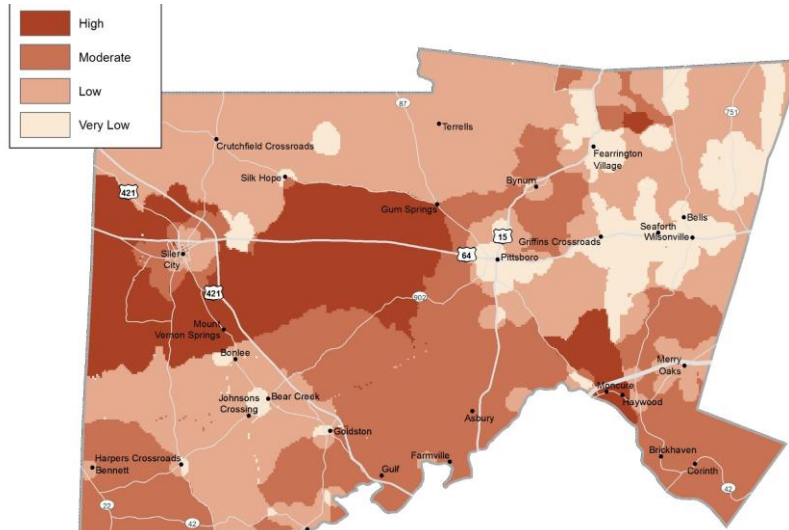
GOALS

The vision is supported by a set of interrelated goals. Each goal is supported by a number of plan elements and recommendations within those elements. For example, the land use recommendations are associated with the achievement of a number of goals. Similarly many goals are supported by recommendations in the transportation element.

GOAL	ECONOMIC DEVELOPMENT	LAND USE	HOUSING	HEALTH	AGRICULTURE	NATURAL RESOURCES	RESILIENCY	PARKS AND RECREATION	TRANSPORTATION	UTILITIES
1. Preserve the rural character and lifestyle of Chatham County.		●	●		●	●		●		●
2. Preserve, protect, and enable agriculture and forestry.	●	●		●	●	●				●
3. Promote a compact growth pattern by developing in and near existing towns, communities, and in designated, well planned, walkable, mixed use centers.		●				●	●		●	●
4. Diversify the tax base and generate more quality, in-county jobs to reduce dependence on residential property taxes, create economic opportunity and reduce out-commuting.	●	●			●		●		●	
5. Conserve natural resources.					●	●	●	●		
6. Provide recreational opportunities and access to open space.		●		●				●	●	
7. Provide infrastructure to support desired development and support economic and environmental objectives.	●							●	●	●
8. Become more resilient by mitigating, responding and adapting to emerging threats.		●		●		●	●	●		
9. Provide equitable access to high-quality education, housing and community options for all.	●		●	●			●	●	●	
10. Foster a healthy community.		●	●	●	●		●	●		

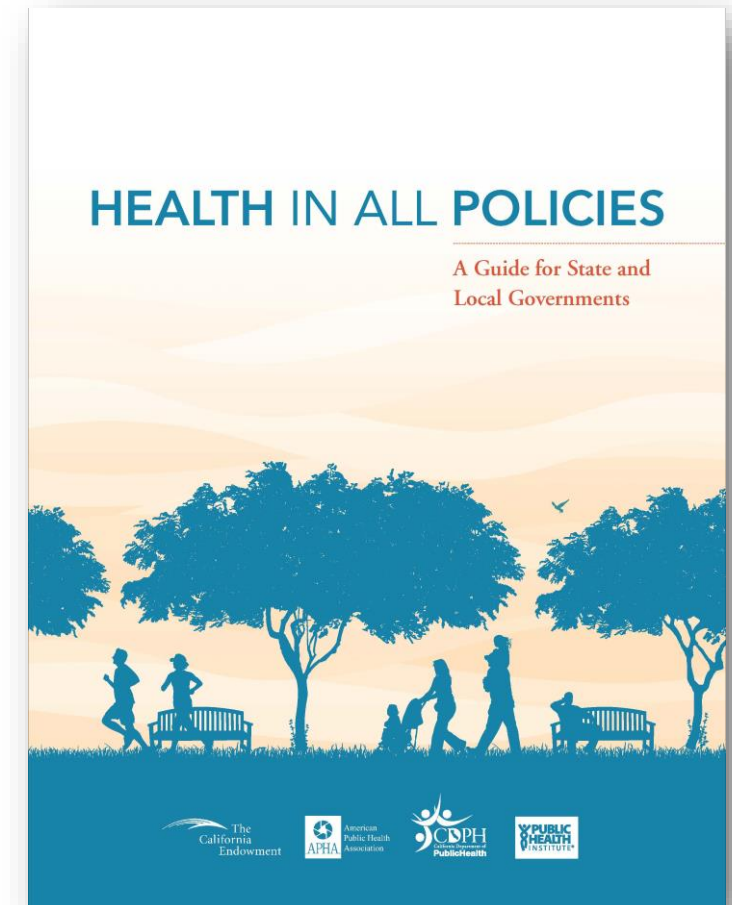
HEALTH DEPARTMENT PARTNERSHIP

- Health in All Policies Approach (HiAP)
- Participating in efforts to gather, store, share data
- Outreach efforts
- Grants
- Funded analysis of Public Health Priority Areas (access issues)



- *Percent Poverty*
- *Percent Minority Populations*
- *Car / Transportation*
- *Healthy Food Access*
- *Parks and Trails Access*
- *Death Rates from Heart Disease*

This Health in All Policies approach systematically considers the health implications of policy decisions, and aims to improve population health and health equity.



KEY TAKE-A-WAYS

- Develop partnerships in the beginning
- Set up a conversation with your Health Department
- Grant funding helps, but isn't necessary
- Add a **Health in All Policies Approach** to embed health and cross sector collaboration into your processes for future projects, policies and programs.

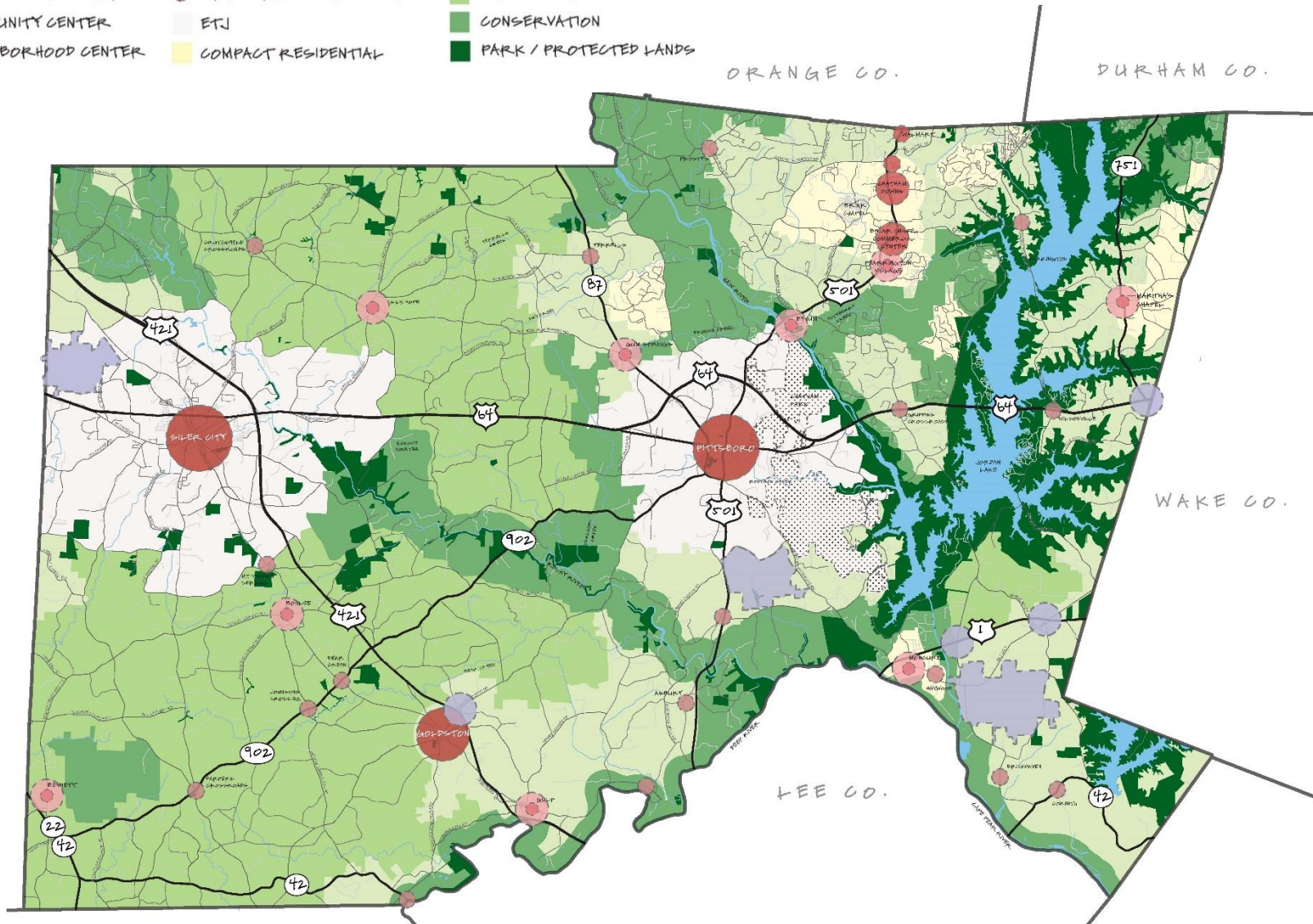
PLAN ELEMENTS

Economic Development			Environment
Land Use			Resiliency
Housing			Parks and Recreation
Health			Transportation
Agriculture			Utilities and Public Services

Health in All Policies – Collaborate and share resources across departments and disciplines on policies, projects and strategies to promote efficiencies, reduce redundancies, and decrease costs to help improve performance and outcomes.

LEGEND

- TOWN CENTER
- EMPLOYMENT CENTER
- COMMUNITY CENTER
- NEIGHBORHOOD CENTER
- VILLAGE & VILLAGE CENTER
- CROSSROADS COMMUNITY
- ETJ
- COMPACT RESIDENTIAL
- RURAL
- AGRICULTURE
- CONSERVATION
- PARK / PROTECTED LANDS



HIGHLIGHTS

- **Compact, walkable mixed use areas** with focused residential growth
- Designated Employment Centers to recruit **jobs and diversify the tax base**
- Rural and Agricultural Areas—where lower density development is key to protecting **rural character and farming operations**
- Conservation Areas meant to **protect water quality, wildlife habitat, and property rights**

DRAFT FUTURE LAND USE AND CONSERVATION PLAN