

PRELIMINARY
DO NOT USE FOR CONSTRUCTION

CALL N.C. ONE CALL CENTER BEFORE YOU DIG
STOP
1-800-632-4949
AVOID UTILITY DAMAGE

SCALE: 1"=40' (Horiz.)

REV.	DESCRIPTION	DATE
A	CHATHAM COUNTY APPEARANCE COMMITTEE	2020.10.20

SEAL
PRELIMINARY PLAN
FOR REVIEW PURPOSES ONLY

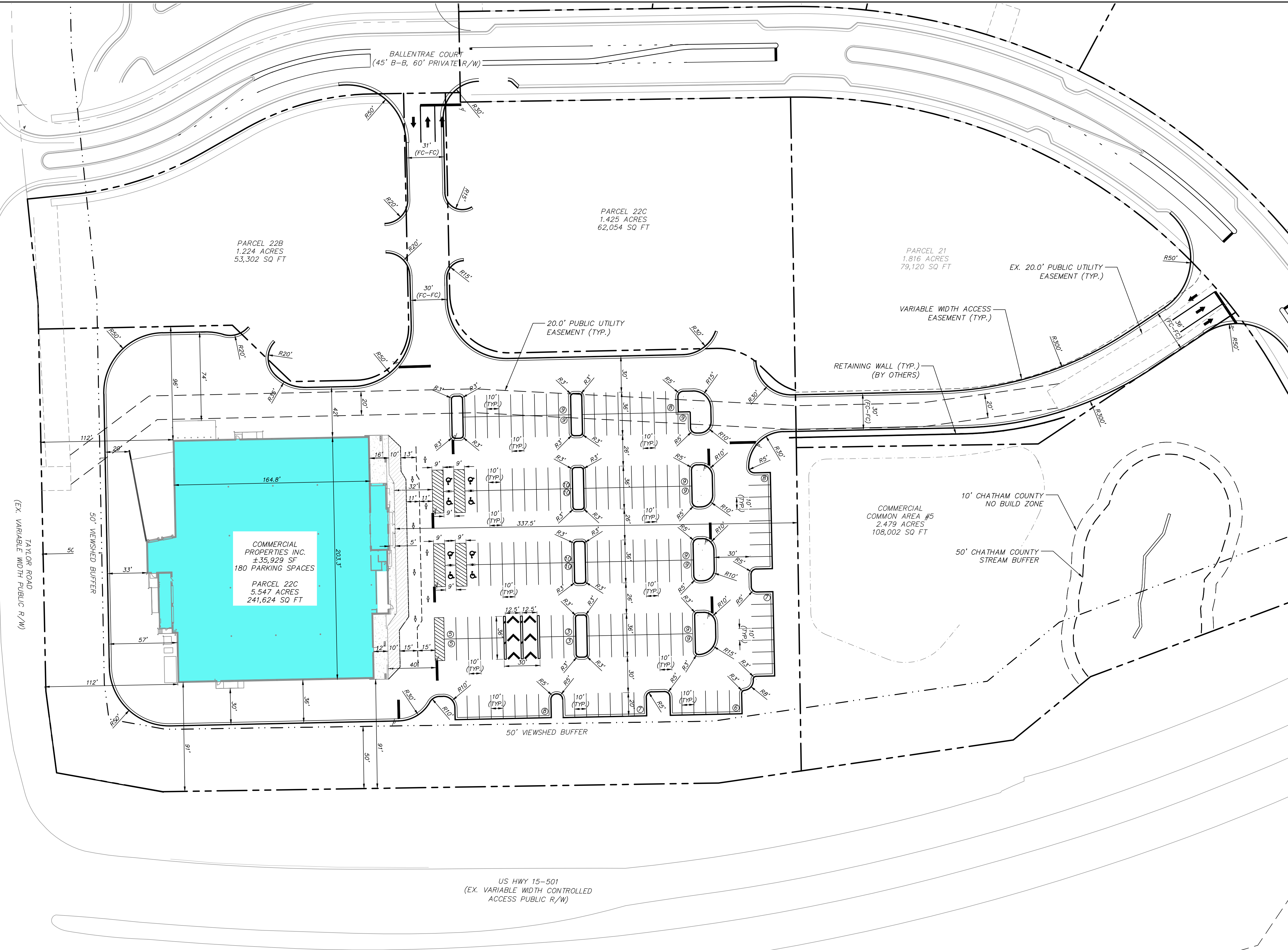
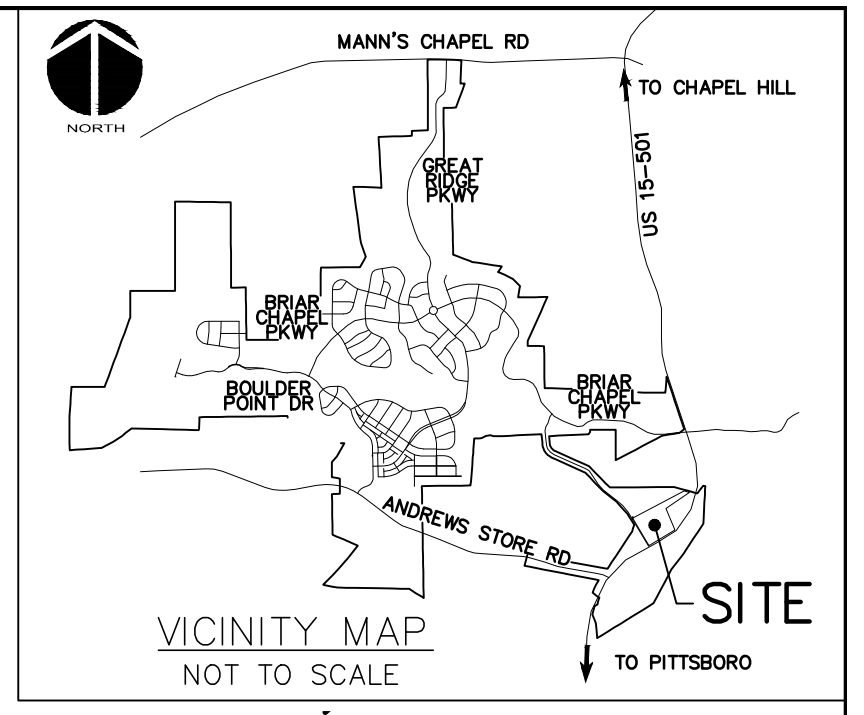
1730 Varsity Drive, Suite 500
Raleigh, North Carolina 27606
Phone: (919)233-8091, Fax: (919)233-8031
F-1222
www.mckimcreed.com

1730 Varsity Drive, Suite 500
Raleigh, North Carolina 27606
Phone: (919)233-8091, Fax: (919)233-8031
F-1222
www.mckimcreed.com

COMMERCIAL PROPERTIES INC.
BRIAR CHAPEL SD WEST
CHATHAM COUNTY, NORTH CAROLINA

EXISTING CONDITIONS PLAN

DATE: OCTOBER 20, 2020	SCALE: HORIZONTAL: 1"=40'	MSC FILE NUMBER: C0.X
MCE PROJ. #: 00741-0011	VERTICAL: N/A	DRAWING NUMBER: C0.1
DRAWN: ENS		
DESIGNED: DJB		
CHECKED: DJB		
PROJ. MGR.: GCA		
STATUS: PRELIMINARY LAYOUT NOT TO BE USED FOR CONSTRUCTION	REVISION: A	



SITE DATA TABLE:

- AKPAR NUMBER:
93299
- TOTAL SITE AREA:
8.11 AC
- PARKING SPACES:
PARKING REQUIRED:
1 SPACE / 1,000 SF
35,929 SF / 1,000 * 5 = 180 SPACES
ADA SPACES REQUIRED:
ADA SPACES: 6
VAN ACCESSIBLE SPACES: 1
PARKING PROVIDED: 173 SPACES
8 ADA SPACES (TOTAL)
TOTAL SPACES: 181 SPACES

CALL N.C. ONE CALL CENTER BEFORE YOU DIG
STOP
1-800-632-4949
AVOID UTILITY DAMAGE

NORTH

40' 0 40' 80'
SCALE: 1"=40' (Horiz.)

PRELIMINARY
DO NOT USE FOR CONSTRUCTION

REV. NO.	DESCRIPTION	DATE
A	CHATHAM COUNTY APPEARANCE COMMITTEE	2020.10.20
	REVISIONS	

SEAL

SEAL

PRELIMINARY PLAN
FOR REVIEW PURPOSES ONLY

MCKIM & CREED

1730 Varsity Drive, Suite 500
Raleigh, North Carolina 27606
Phone: (919)233-8091, Fax: (919)233-8031
F-1222

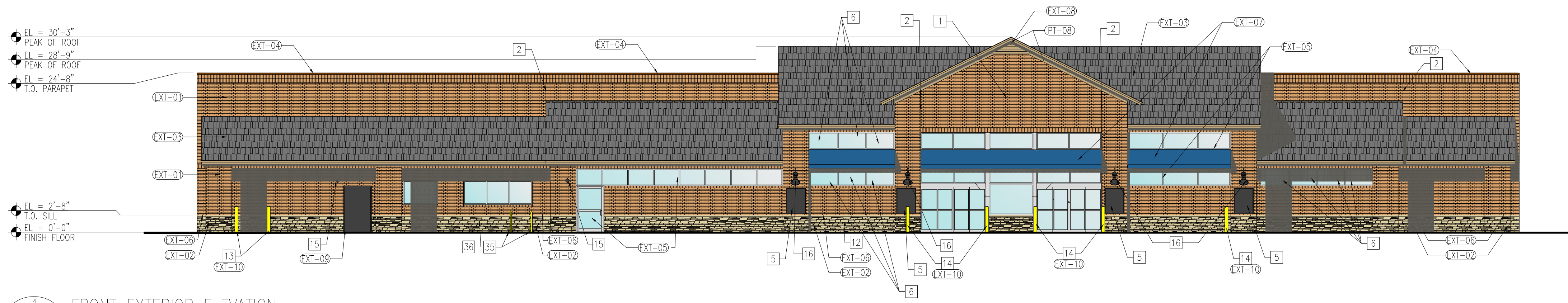
www.mckimcreed.com

CP commercial properties, inc.

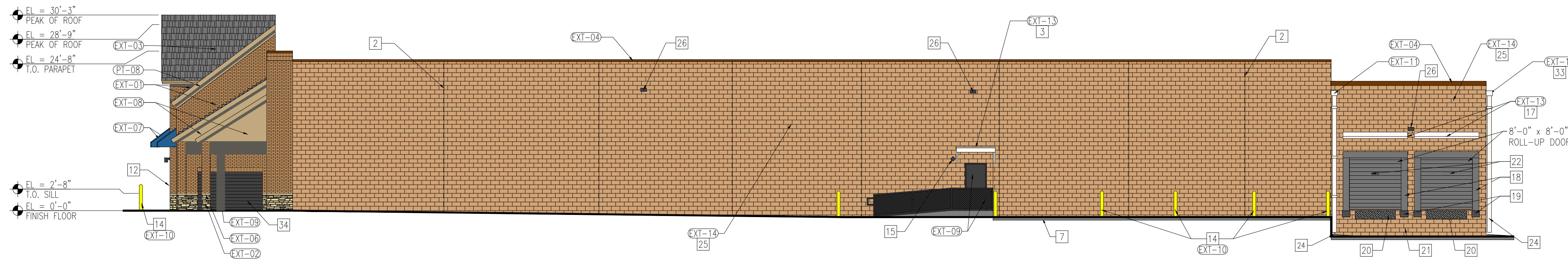
COMMERCIAL PROPERTIES INC.
BRIAR CHAPEL SD WEST
CHATHAM COUNTY, NORTH CAROLINA

SITE PLAN

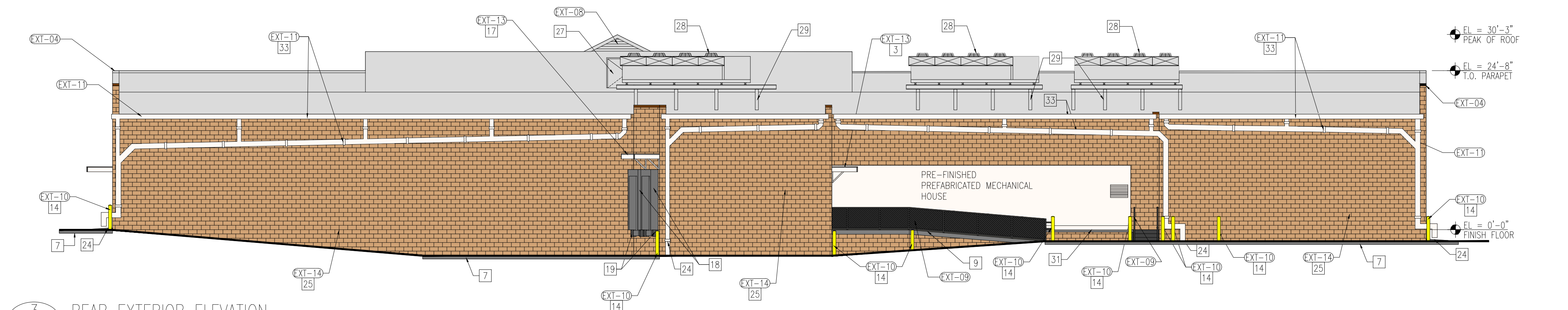
DATE: OCTOBER 20, 2020	SCALE: HORIZONTAL: 1"=40'	MISC. FILE NUMBER: C1.X
MCE PROJ. #: 00741-0011	VERTICAL: N/A	DRAWING NUMBER: C1.0
DRAWN: ENS		
DESIGNED: DJB		
CHECKED: DJB		
PROJ. MGR.: GCA		
STATUS: PRELIMINARY LAYOUT NOT TO BE USED FOR CONSTRUCTION	REVISION: A	



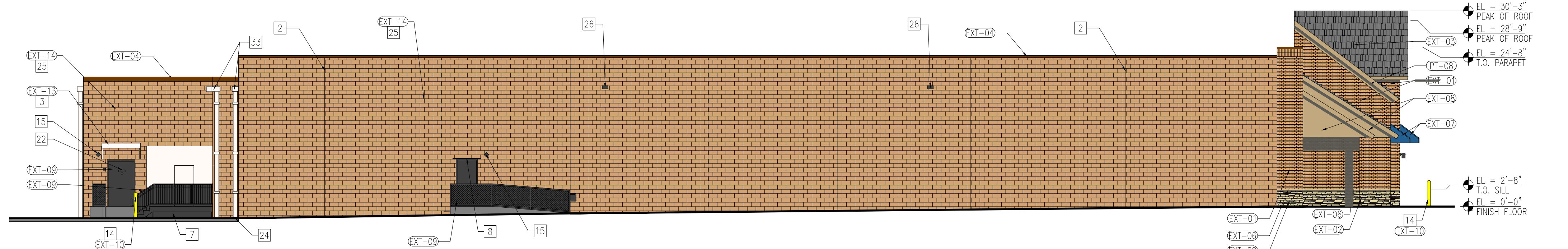
1 FRONT EXTERIOR ELEVATION
A2.01 SCALE: 3/32"=1'-0"



2 RIGHT EXTERIOR ELEVATION
A2.01 SCALE: 3/32"=1'-0"



3 REAR EXTERIOR ELEVATION
A2.01 SCALE: 3/32"=1'-0"



4 LEFT EXTERIOR ELEVATION
A2.01 SCALE: 3/32"=1'-0"

- EXTERIOR ELEVATIONS FINISH MATERIALS AND COLOR LEGEND:**
- EXI-01 BRICK VENEER TO BE "COLONY POINT" MODULAR SIZE BY GENERAL SHALE. MORTAR TO BE "LIME PUDDY" BY HOLCIM WITH A GRAPEVINE JOINT
 - EXI-02 GENERAL SHALE, "MOCHA", CITADEL, BY ARRISGRAFT BUILDING STONE. MORTAR TO BE "LIME PUDDY" BY HOLCIM WITH GRAPEVINE JOINT
 - EXI-03 CERTAINTED LANDMARK PLUS ASPHALT FIBERGLASS SHINGLE COLOR - MOIRE BLACK
 - EXI-04 PRE-FINISHED METAL COPING - METAL ROOF SYSTEMS COLOR- "DARK BRONZE"
 - EXI-05 ALUM. STOREFRONT SYSTEM BY KAWNEER. REFER TO SPECS. CLEAR ANODIZED ALUMINUM WITH CLEAR TEMPERED/INSULATED OR SPANDREL GLASS.
 - EXI-06 ARRISGRAFT STONE WALL CAP. COLOR: MOCHA. MORTAR TO BE "LIME PUDDY" BY HOLCIM WITH GRAPEVINE JOINT.
 - EXI-07 ALUMINUM COMPOSITE 4MM ALPOC PANELS, COLOR BLUE PMS#647C. GENERAL CONTRACTOR TO SINGLE SOURCE NEW AWNINGS TO "ALLEN INDUSTRIES, INC.", 6434 BURNT POPULAR ROAD, GREENSBORO, NC 1-800-967-2553 / 704-677-3030, PETE.BARGER@ALLENINDUSTRIES.COM. GC TO PROVIDE SHOP DRAWINGS FOR PROOF, AWNINGS AND THEIR ATTACHMENTS. AWNING LIGHT TO BE PROVIDED BY AWNING VENDOR. FIRE SPRINKLER INSTALLATION BY FIRE PROTECTION CONTRACTOR. INSTALLED PER FP DESIGN.
 - EXI-08 FYPON LOUVER / HARDIE BOARD SHINGLE ROOF TRIM / HARDIESOFFIT PANEL SMOOTH (ON CANOPY END) - PT-08. PRE-FINISHED ALUMINUM CANOPY TO MATCH PT-08
 - EXI-09 EXTERIOR H.M. DOORS AND FRAMES, CART ROLL UP DOOR AND FRAME, RAILINGS, AND FRAME ONLY FOR DOCK ROLL UP DOORS COLOR - PT-09
 - EXI-10 GUARD POSTS TO BE PAINTED "TRAFFIC YELLOW" EXCEPT THE GUARD POSTS AT THE FRONT WHICH SHALL BE COVERED BY MOCUE OR THE BOSTON GROUP YELLOW CART-STOP POST COVERS.
 - EXI-11 PRE-FINISHED RAIN GUTTERS AND DOWNSPOUTS - METAL ROOF SYSTEMS COLOR - "STONE WHITE."
 - EXI-12 CERTAINTED IRONMAX DOUBLE 5" VINYL SOFFIT PANEL COLOR: COLONIAL WHITE
 - EXI-13 PRE-FINISHED CANOPY COLOR: WHITE
 - EXI-14 PAINTED CONCRETE BLOCK COLOR: - PT-11

- INTERIOR WALL/MATERIAL PAINTING LEGEND:**
- PT-08 COLOR: SW 6071 POPULAR GRAY
 - PT-09 COLOR: SW 7069 IRON ORE
 - PT-11 COLOR: SW 7038 TONY TAUPE

- KEY NOTES**
1. SIGNAGE BY OTHERS (NOT SHOWN).
 2. CONTROL JOINT TYP.
 3. 4'-0"x6'-0" ALUMINUM CANOPY AT 9'-0" AFF. SEE DETAIL 9/A5.05
 4. NOT USED
 5. SIGNAGE BOARD, TYP.
 6. SPANDREL WINDOW.
 7. CONCRETE PAD, RE: CIVIL DRAWINGS
 8. PROVIDE METAL DRIP OVER DOOR.
 9. G.C. TO BUILD AND INSTALL DSD RAMP WITH HANDRAILS TO MEET LOCAL CODE. SLOPE TO BE 1:12
 10. NOT USED
 11. NOT USED
 12. NOT USED
 13. GUARD POST BY OTHERS.
 14. GUARD POSTS.
 15. EMERGENCY LIGHT AT 8'-0" AFF
 16. ENTRY LIGHTS MOUNTED AT 9'-0"
 17. 3'-0"x10'-0" ALUMINUM CANOPY.
 18. CUSHIONED DOCK SEAL TYP.
 19. BUMPER TYP.
 20. DOCK LEVELER TYP.
 21. ANTI-RODENT COATING ON FACE OF DOCK WALL FROM BOTTOM OF TRUCK WELL UP TO FINISH FLOOR; APPLY (1) ONE COAT OF SHERWIN WILLIAMS FT910 SURFACING COMPOUND (PRIMER) AND (2) COATS OF ACROLON100 URETHANE (FINISH COAT). COLOR TBD
 22. GENERAL CONTRACTOR IS TO STENCIL THE STORE NUMBER ON DSD DOOR AND ROLL-UP DOORS WITH 4" TALL NUMBERS, USING CONTRASTING PAINT.
 23. NOT USED
 24. CONCRETE SPLASH BLOCKS
 25. PAINTED CONCRETE BLOCK FILLER AND TOP COAT PER SECTION 099113 OF FOOD LION SPECIFICATIONS (TYPICAL EXTERIOR PAINTED BLOCK)
 26. ELECTRICAL WALL PACKS. SEE ELECTRICAL DWG.
 27. PROVIDE 36"x48" LOCKABLE ACCESS DOOR.
 28. CONDENSER UNIT.
 29. PIPE SUPPORT (TYPICAL).
 30. NOT USED
 31. HOLES IN BASE OF PREFAB MECHANICAL HOUSE TO BE SEALED WITH RODENT PROOF MATERIAL TO PREVENT RODENT HARBORING.
 32. NOT USED
 33. ROOF GUTTERS AND DOWNSPOUTS.
 34. CART GARAGE DOOR, BEYOND.

HOWARD Architecture, P.A.
ARCHITECTS / PLANNERS
120 Penmarc Dr., Ste. 100
Raleigh, NC 27603-2400
ph. (919) 821-2800

FOR REVIEW ONLY
NOT FOR CONSTRUCTION

GROCERY STORE
BRIAR CHAPEL SD WEST
CHAPEL HILL ROAD & TAYLOR ROAD
CHATHAM COUNTY, NORTH CAROLINA
COMMERCIAL PROPERTIES, INC.

rev #	date	released
01-14-2021		for site review

THIS DRAWING AND THE DESIGN SHOWN IS THE PROPERTY OF HOWARD ARCHITECTURE, P.A. REPRODUCTION, COPYING OR OTHER USE OF THIS DRAWING WITHOUT THEIR WRITTEN CONSENT IS PROHIBITED AND ANY INFRINGEMENT WILL BE SUBJECT TO LEGAL ACTION.

© COPYRIGHT 2021 HOWARD ARCHITECTURE, P.A.

project 11537.00
dwg. by GS
ckd. by ACH

content
EXTERIOR ELEVATIONS

sheet

A-1