

NO.	REVISIONS	DATE



CE GROUP

301 GLENWOOD AVE. 220
RALEIGH, NC 27603
PHONE: 919-367-8790
FAX: 919-322-0032

www.cegroupinc.com

License # C-1739

Preliminary
Not Released
For Construction

CONSTRUCTIONS DRAWINGS
CRUIZERS CONVENIENCE STORE
LANDSCAPE PLAN
TAYLOR ROAD, CHATHAM COUNTY, NORTH CAROLINA

Date: 10/2020

Scale: N/A= 40'

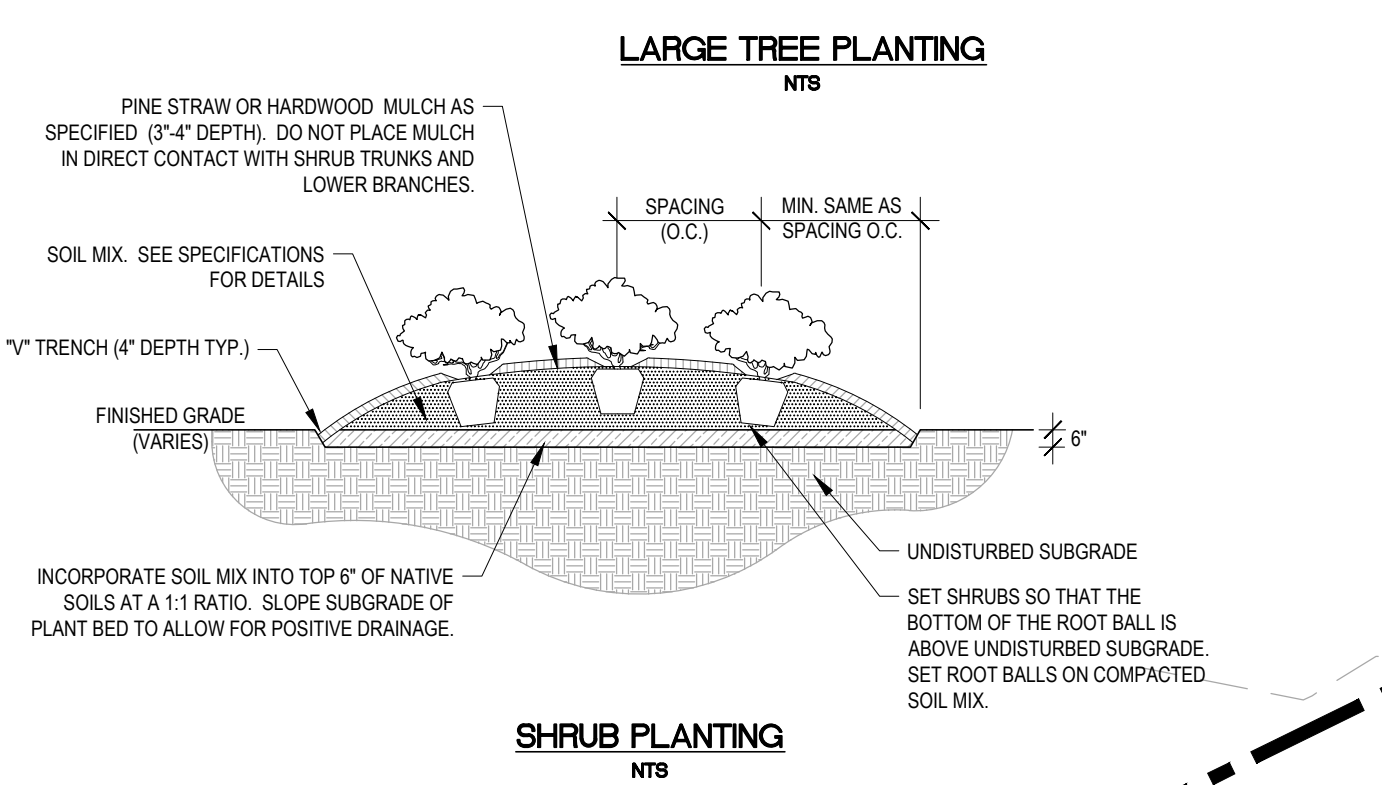
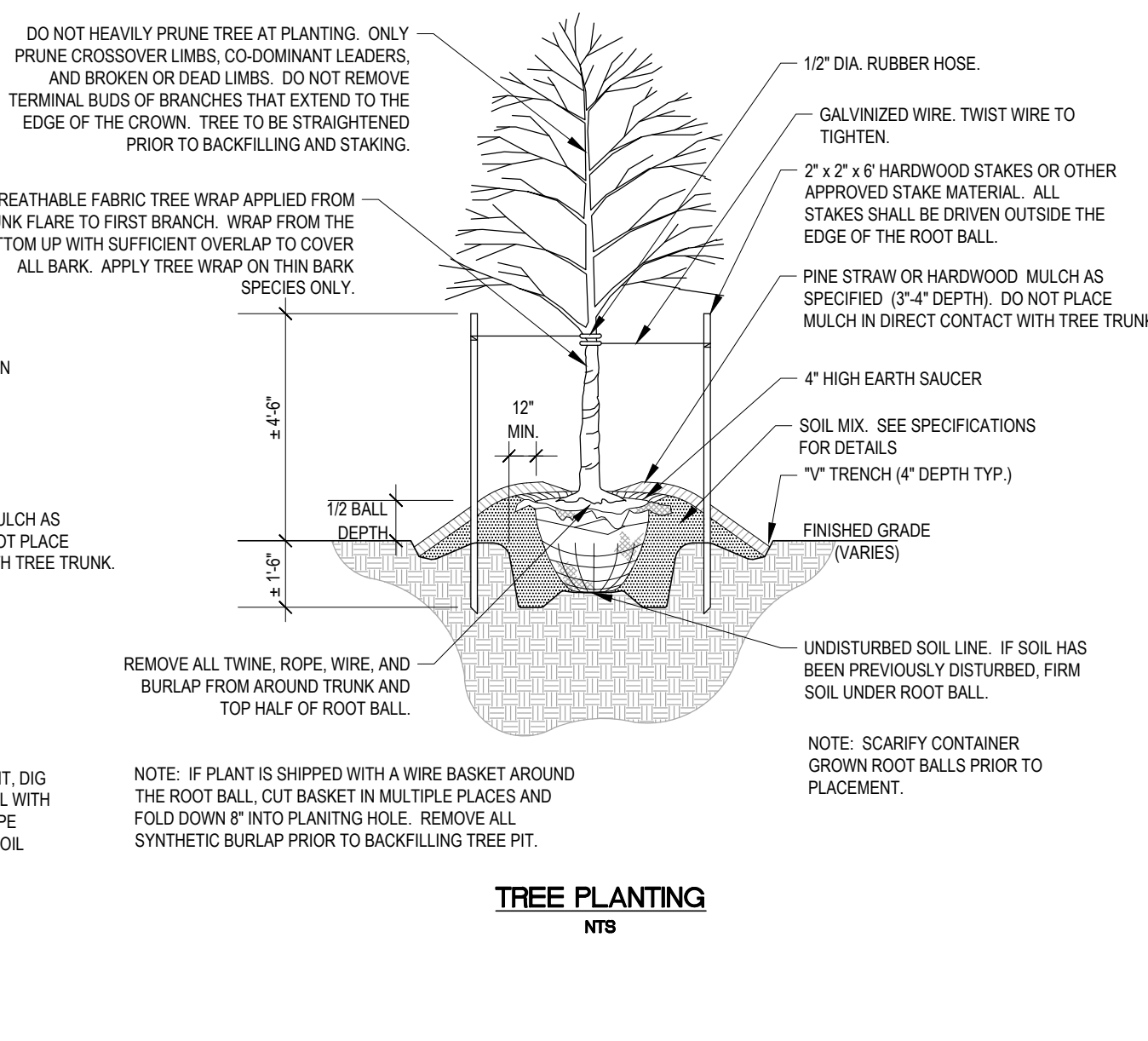
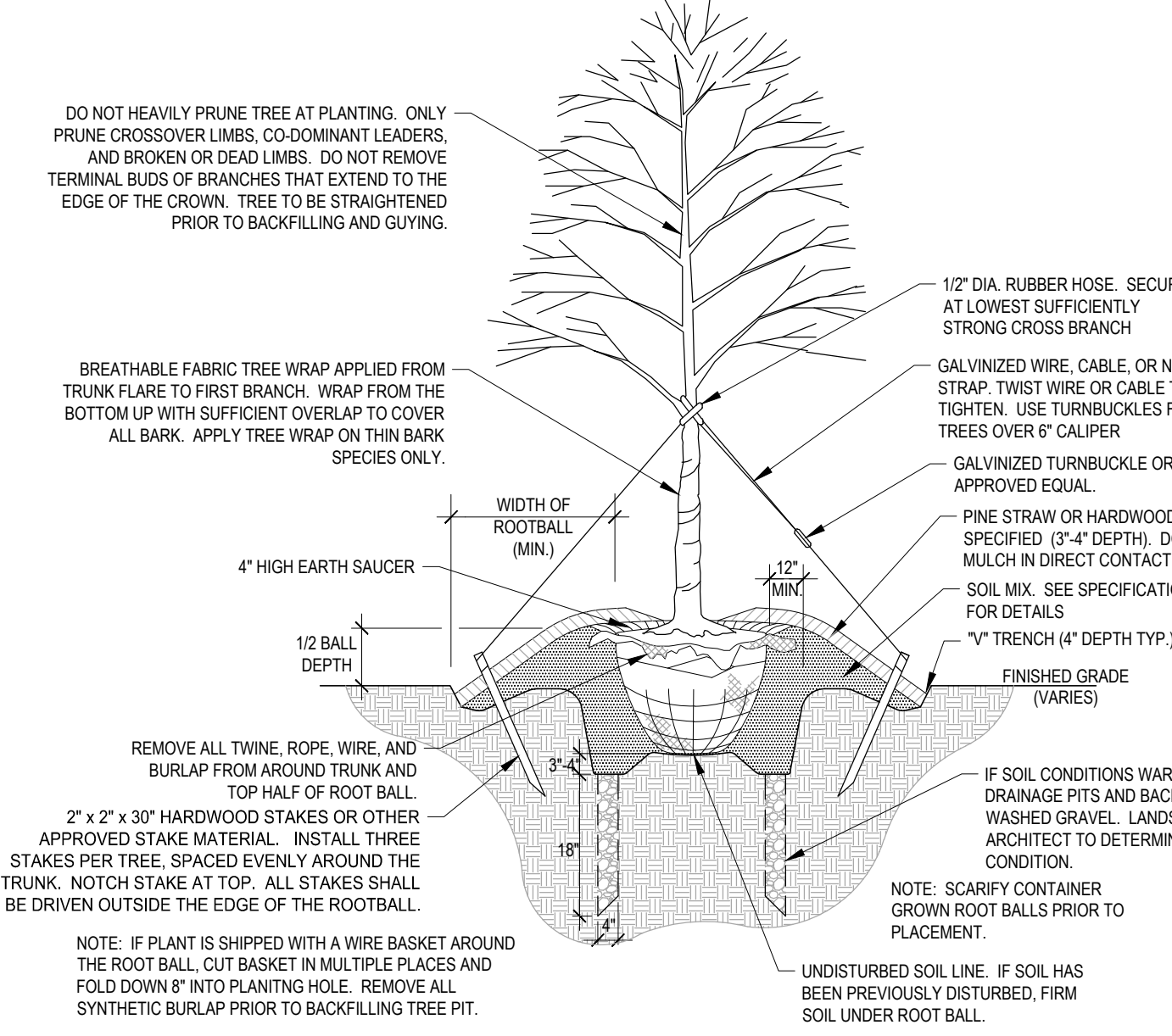
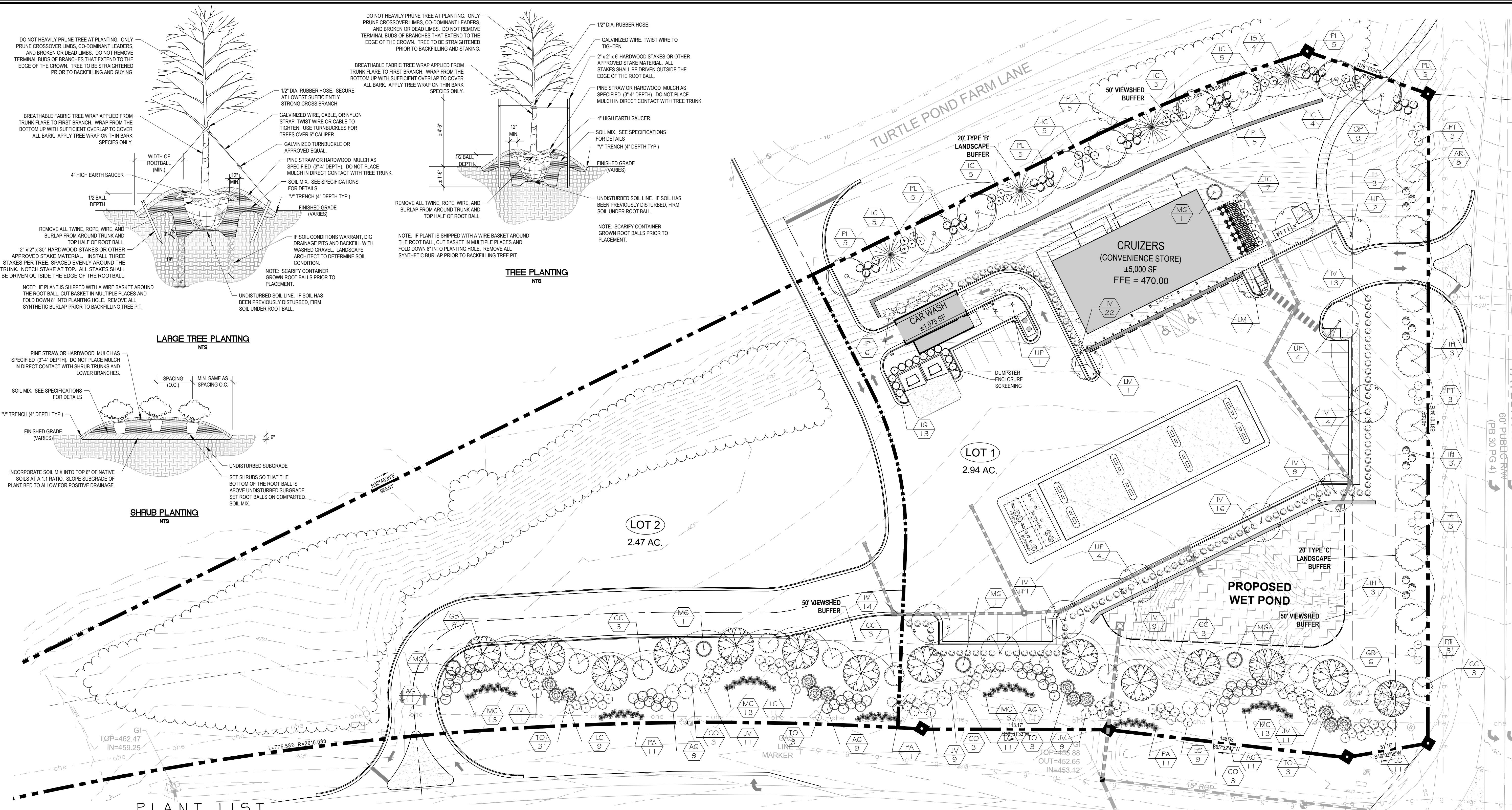
Drawn: BWM

Checked: JMC

Project No: 012.24

Computer Dwg. Name: 012.24 LANDSCAPE PLAN.dwg

Sheet No: 8



PLANT LIST

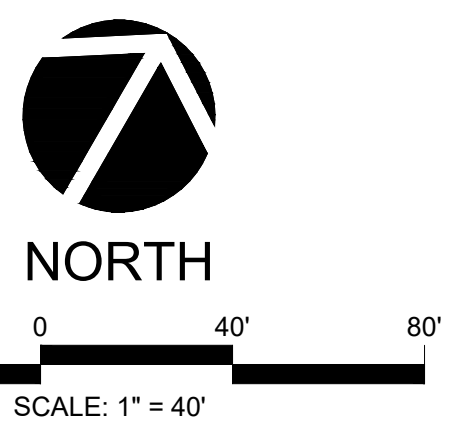
SYM.	QUAN.	BOTANICAL NAME	COMMON NAME	CAL.	HT.	ROOT	REMARKS
TREES							
AR	8	<i>Acer rubrum</i> 'October Glory'	October Glory Red Maple	2-1/2"	10' - 12'	B # B	40' o.c. Avg.
CC	12	<i>Cercis canadensis</i> 'Forest Pansy'	Forest Pansy Redbud	1-1/2"	6' - 8'	B # B	Single-Stem
GB	14	<i>Ginkgo biloba</i> 'Princeton Sentry'	Princeton Sentry Ginkgo	2-1/2"	10' - 12'	B # B	Male Only - 40' o.c. Avg.
IS	4	<i>Ilex x attenuata</i> 'Savannah'	Savannah Holly	1-1/2"	8' - 10'	B # B	
LM	2	<i>Lagerstroemia</i> x 'Miami'	Miami Crape Myrtle	1-1/2"	6' - 8'	B # B	Single-Stem
MG	5	<i>Magnolia grandiflora</i> 'Little Gem'	Little Gem Magnolia	-	6' - 8'	B # B	
QP	9	<i>Quercus phellos</i>	Willow Oak	2-1/2"	10' - 12'	B # B	30' o.c. Avg.
UP	11	<i>Ulmus parvifolia</i> 'Bosque'	Lacebark Elm	2-1/2"	10' - 12'	B # B	
SHRUBS							
AG	51	<i>Abelia x grandiflora</i> 'Canyon Creek'	Canyon Creek Abelia		24" - 30"	CONT.	
CO	9	<i>Chamaecyparis obtusa</i> 'Crippsii'	Cripps Hinoki Cypress		4' - 6'	B # B	
IC	36	<i>Ilex cornuta</i> 'Burfordii Nana'	Dwarf Burford Holly		24" - 30"	CONT.	
IG	13	<i>Ilex glabra</i>	Inkberry		36" - 48"	CONT.	
IV	108	<i>Ilex vomitoria</i> 'Nana'	Dwarf Yaupon Holly		18" - 24"	CONT.	
IP	6	<i>Illicium parvifolia</i> 'Florida Sunshine'	Florida Sunshine Anise		36" - 48"	CONT.	
IH	12	<i>Itea virginica</i> 'Henry's Garnet'	Henry's Garnet Sweetshrub		24" - 30"	CONT.	
JV	51	<i>Juniperus virginiana</i> 'Grey Owl'	Grey Owl Juniper		24" - 30"	CONT.	
LC	51	<i>Loropetalum chinense</i> var. 'rubrum Ruby'	Ruby Loropetalum		24" - 30"	CONT.	
PT	12	<i>Pittosporum tobira</i>	Pittosporum		24" - 30"	CONT.	
PL	35	<i>Prunus laurocerasus</i> 'Zabeliana'	Zabel Laurel		24" - 30"	CONT.	
TO	12	<i>Thuja occidentalis</i> 'DeGroot's Spire'	DeGroot's Spire Arborvitae		4' - 6'	B # B	

PLANT LIST

SYM.	QUAN.	BOTANICAL NAME	COMMON NAME	CAL.	HT.	ROOT	REMARKS
ORNAMENTAL GRASSES							
MG	52	<i>Muhlenbergia capillans</i>	Pink Muhly Grass		18" - 24"	CONT.	
PA	33	<i>Pennisetum alopecuroides</i> 'Hameln'	Hameln Fountain Grass		18" - 24"	CONT.	
GROUND COVER							
TURF	-	<i>Cynodon dactylon</i>	Bermuda Grass			SEED	

- PLANTING NOTES:**
- LANDSCAPE CONTRACTOR SHALL PROVIDE PLANT MATERIAL FROM LOCAL SOURCE TO ENSURE SURVIVABILITY. CONTRACTOR TO PROVIDE SOURCE OF PLANT MATERIAL AND LOCATION FOR APPROVAL PRIOR TO INSTALLATION OF MATERIAL.
 - PRIOR TO INSTALLING FINAL PLANTINGS, AUGMENT WITH SOIL AMENDMENTS AND TILLING TO PROVIDE ADEQUATE BASE FOR PLANT VITALITY.

A MINIMUM TWO-YEAR WARRANTY PERIOD SHALL BE PROVIDED FOR PLANT SURVIVAL AND REPLACEMENT. AT THE END OF THE FIRST YEAR AND AGAIN AT THE END OF THE 2ND YEAR ALL PLANTS THAT DO NOT SURVIVE MUST BE REPLACED.



ALL CONSTRUCTION TO BE IN ACCORDANCE WITH ALL TOWN OF PITTSBORO AND NCDOT STANDARDS AND SPECIFICATIONS.



P:012 (Edward Holmes)10:24 (Taylor Rd Cruizers) (Engineering\Design\Plans\Construction\Plans\012.24_8 LANDSCAPE PLAN.dwg, PLOTTED: 12/8/2020 1:17 PM, BY: BMAUELLER)