

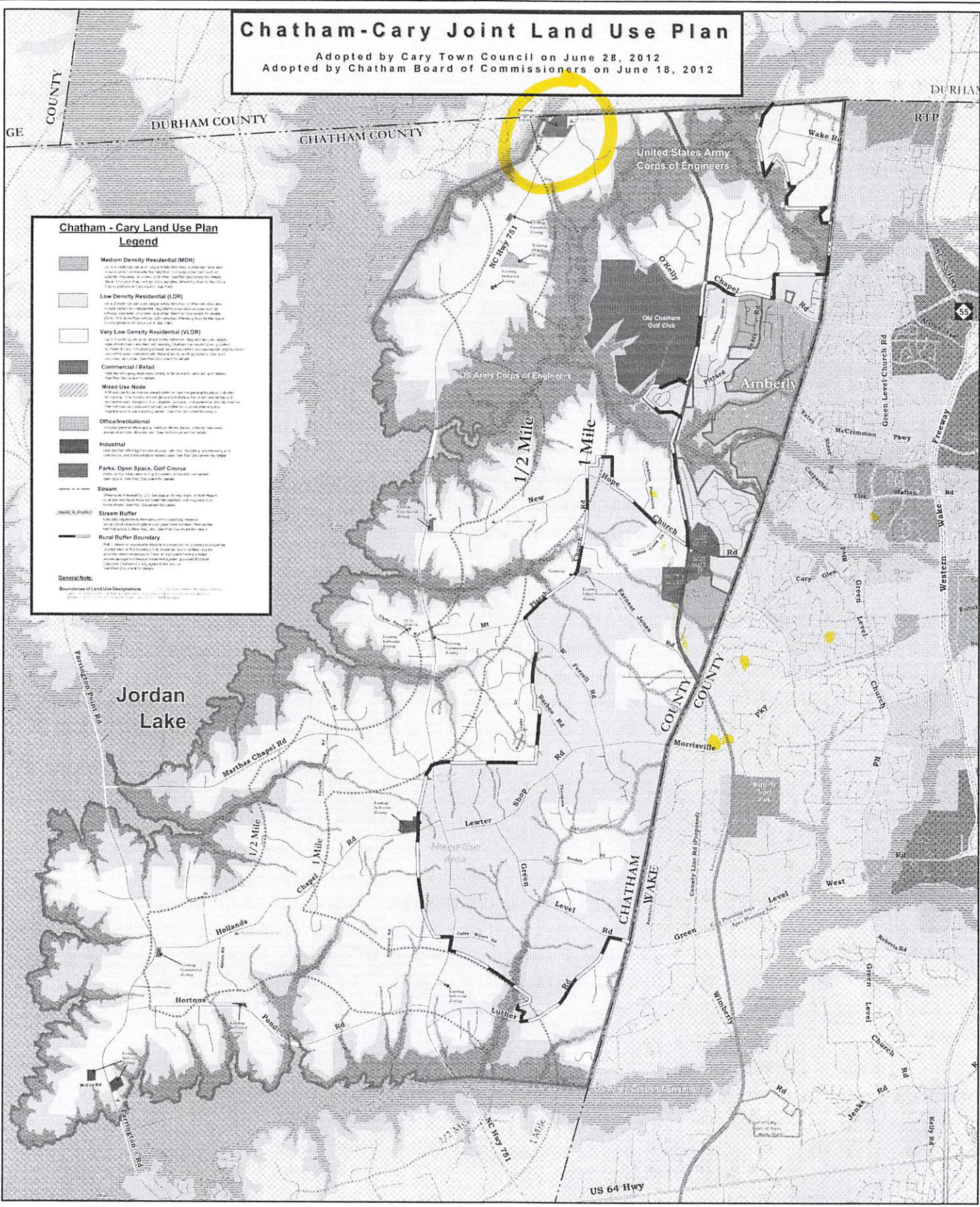


Handwritten notes and a red arrow pointing to the right.



Chatham-Cary Joint Land Use Plan

Adopted by Cary Town Council on June 28, 2012
Adopted by Chatham Board of Commissioners on June 18, 2012



Chatham - Cary Land Use Plan Legend

- Medium Density Residential (MDR)
Use is a medium density residential use, typically consisting of detached single-family dwellings, townhomes, and other residential uses. Medium density residential use is intended to be used in areas with a higher density of residential uses than low density residential use.
- Low Density Residential (LDR)
Use is a low density residential use, typically consisting of detached single-family dwellings. Low density residential use is intended to be used in areas with a lower density of residential uses than medium density residential use.
- Very Low Density Residential (VLD)
Use is a very low density residential use, typically consisting of detached single-family dwellings. Very low density residential use is intended to be used in areas with a very low density of residential uses.
- Commercial / Retail
Use is a commercial or retail use, typically consisting of offices, stores, and other commercial or retail uses. Commercial or retail use is intended to be used in areas with a higher density of commercial or retail uses.
- Mixed Use Node
Use is a mixed use node, typically consisting of a combination of residential, commercial, and retail uses. Mixed use nodes are intended to be used in areas with a higher density of mixed use nodes.
- Official/Institutional
Use is an official or institutional use, typically consisting of government buildings, schools, and other official or institutional uses. Official or institutional use is intended to be used in areas with a higher density of official or institutional uses.
- Industrial
Use is an industrial use, typically consisting of manufacturing, processing, and other industrial uses. Industrial use is intended to be used in areas with a higher density of industrial uses.
- Parks, Open Space, Golf Course
Use is a park, open space, or golf course use, typically consisting of parks, open spaces, and golf courses. Parks, open space, or golf course use is intended to be used in areas with a higher density of parks, open space, or golf course uses.
- Stream
Use is a stream use, typically consisting of streams, rivers, and other water bodies. Stream use is intended to be used in areas with a higher density of stream uses.
- Stream Buffer
Use is a stream buffer use, typically consisting of a buffer zone around a stream. Stream buffer use is intended to be used in areas with a higher density of stream buffer uses.
- Rural Buffer Boundary
Use is a rural buffer boundary use, typically consisting of a boundary zone around a rural area. Rural buffer boundary use is intended to be used in areas with a higher density of rural buffer boundary uses.

General Note:
Boundaries of Land Use Designations are shown on this map for informational purposes only. They are not intended to be used as a legal document. For more information, please contact the Planning Department.

TOWN of CARY
&
Chatham County
Joint Comprehensive Plan

- US Army CDE Property
- 1/2 Mile & 1 Mile Bufferlines From Jordan Lake Normal Pool Elevation
- Joint Planning Area Boundary
- Cary Corporate Limits in Chatham Co.
- Proposed Future Roads
- American Tobacco Trail
- 100 Year Flood Plain
- Church

Key To Cary Future Growth Framework

- Business/Professional Park
- Commercial Center
- Commercial Center Mixed Use
- Distribution Center
- Office
- Employment Mixed Use Campus
- High Density Residential
- Medium Density Residential
- Low Density Residential
- Very Low Density Residential
- Institutional
- Industrial
- Parks/Open Space/Golf Course
- Stream
- Stream Buffer
- Rural Buffer Boundary

Last Amended: August 24, 2017 / 17-CPA-01

TOWN of CARY

CHATHAM COUNTY
SOUTH CAROLINA