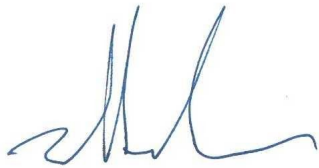

Chatham County Appearance Commission:

Attached is a site plan revision request for 9555 US Hwy 15 501 N., Chapel Hill, NC 27517 in Chatham County. The Parcel (AKPAR 2759) is 2.285 acres with approximately 0.38 acres (16.64%) BUA. We are requesting approval of a 0.25 acre parking area expansion that has already been disturbed for a total of approximately 26.34% BUA. The space being used for additional parking was previously had a 20ft x 15ft paved dog kennel and was vegetated by native grass, weeds, and privet. No woody vegetation over 4" in diameter has been or will be disturbed in the process of expanding this parking area and all possible shade would be preserved. Native trees will be preserved as landscaping and buffer for properties to the North and West. No vegetated buffer previously existed or will exist to the South which is a similar commercial facility.

Thank you,

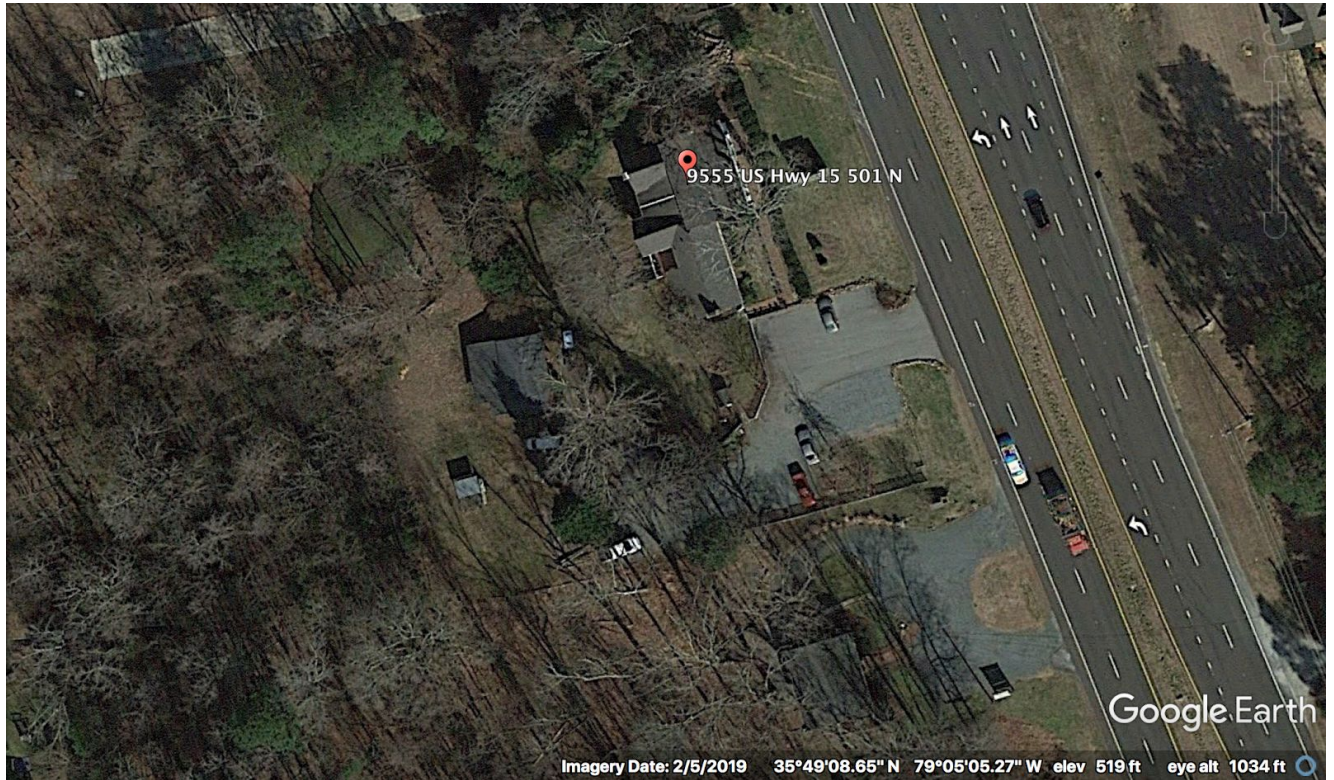
A handwritten signature in blue ink, appearing to read 'Matt Malone', with a stylized, cursive script.

Matt Malone
214-263-7780
matt@naturetrailsnc.com

Google Earth Site Photo from 1993 - All structures previously existing.



Google Earth Site Photo from 2019 - All structures matching 1993 photo.

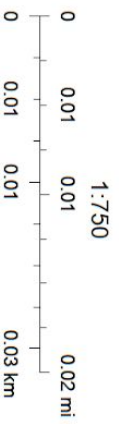


Pre-Existing Site - 9555 US Hwy 15 501 N.



7/19/2020, 11:46:46 AM

Parcels (Polygons) - Parcels



Source: Esri, Maxar, GeoEye, Earthstar Geographics, CNES/Airbus DS,

Pre-Existing BUA - 9555 US Hwy 15 501 N.



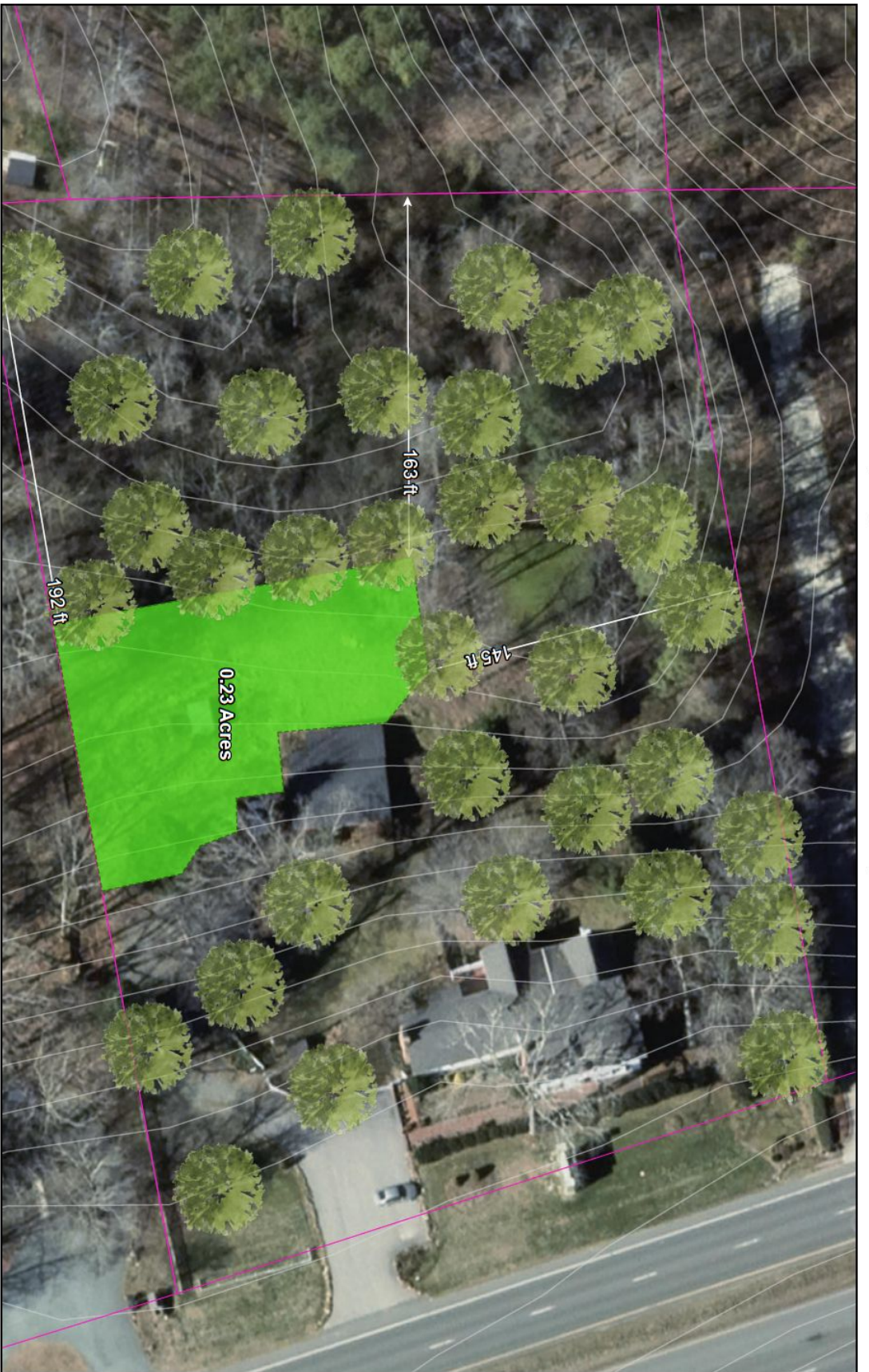
New Gravel Parking - 9555 US Hwy 15 501 N.



7/19/2020, 11:49:11 AM
 New Parking Area Parcels (Polygons) - Parcels
 New Parking

Sources: Esri, Maxar, GeoEye, Earthstar Geographics, CNES/Airbus DS,
 created by Matt Malone
 copyright Matt Malone

Landscaping Buffer - 9555 US Hwy 15 501 N.



7/19/2020, 11:50:47 AM

- Native Trees
- Measurements
- New Parking Area
- Measurement
- New Parking
- Parcels (Polygons) - Parcels
- Native Tree

Source: Esri, Maxar, GeoEye, Earthstar Geographics, CNES/Airbus DS,

created by Matt Malone
copyright Matt Malone

Complete Site Plan - 9555 US Hwy 15 501 N.



Source: Esri, Maxar, GeoEye, Earthstar Geographics, CNES/Airbus DS,
 created by Matt Malone
 copyright Matt Malone

BUA Site Calcs

9555 US Hwy 15 501 N

AKPAR: 2759

Land Quantity	2.285	acres
---------------	-------	-------

Pre-Existing Site Calc

Item	Area	Unit
Primary Building	0.0965	acres
Barn	0.0331	acres
Shed	0.0128	acres
Dog Kennel	0.0085	acres
Front Walkway	0.0159	acres
Rear Walkway	0.0085	acres
Gravel Parking	0.205	acres
Total	0.3803	acres
Pre-existing BUA:	16.64%	

Proposed Addition Site Calc

Item	Area	Unit
Dog Kennel	-0.0085	acres
Additional Parking	0.23	acres
Total	0.2215	acres
New BUA:	26.34%	