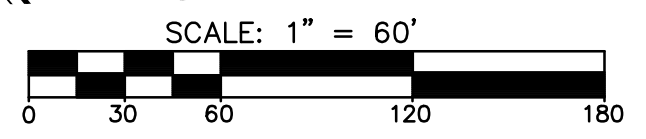
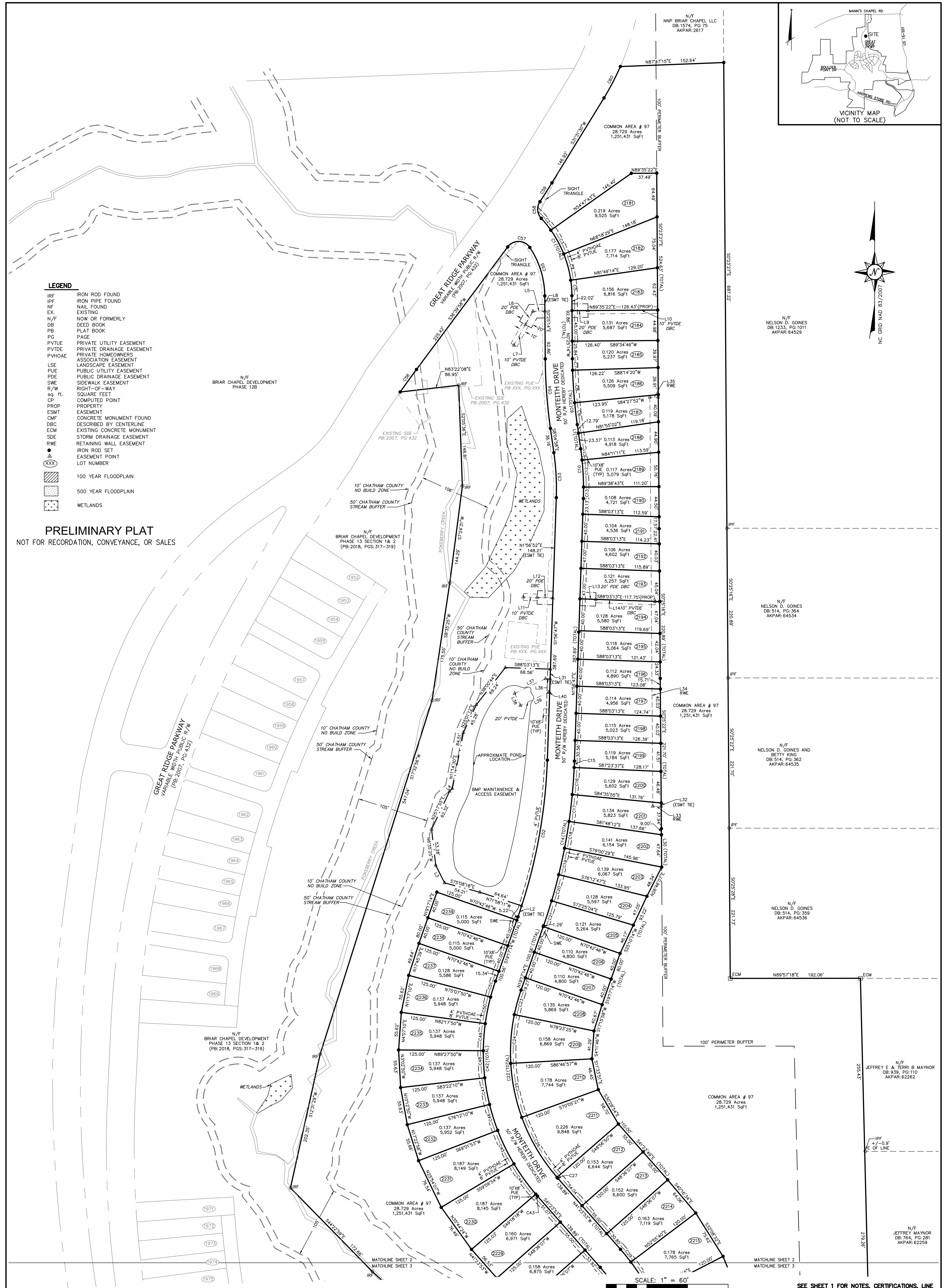


- LEGEND**
- IRF IRON ROD FOUND
 - IPF IRON PIPE FOUND
 - NF NAIL FOUND
 - EX EXISTING
 - N/F NOW OR FORMERLY
 - DB DEED BOOK
 - PB PLAT BOOK
 - PG PAGE
 - PVUE PRIVATE UTILITY EASEMENT
 - PVDE PRIVATE DRAINAGE EASEMENT
 - PVHOAE PRIVATE HOMEOWNERS ASSOCIATION EASEMENT
 - LSE LANDSCAPE EASEMENT
 - PUE PUBLIC UTILITY EASEMENT
 - PDE PUBLIC DRAINAGE EASEMENT
 - SWE SIDEWALK EASEMENT
 - R/W RIGHT-OF-WAY
 - sq. ft. SQUARE FEET
 - CP COMPUTED POINT
 - PROP PROPERTY
 - ESMT EASEMENT
 - CMF CONCRETE MONUMENT FOUND
 - DBC DESCRIBED BY CENTERLINE
 - ECM EXISTING CONCRETE MONUMENT
 - SDE STORM DRAINAGE EASEMENT
 - RW RETAINING WALL EASEMENT
 - IRF IRON ROD SET
 - ▲ EASEMENT POINT
 - LOT NUMBER
 - 100 YEAR FLOODPLAIN
 - 500 YEAR FLOODPLAIN
 - WETLANDS

PRELIMINARY PLAT
NOT FOR RECORDATION, CONVEYANCE, OR SALES



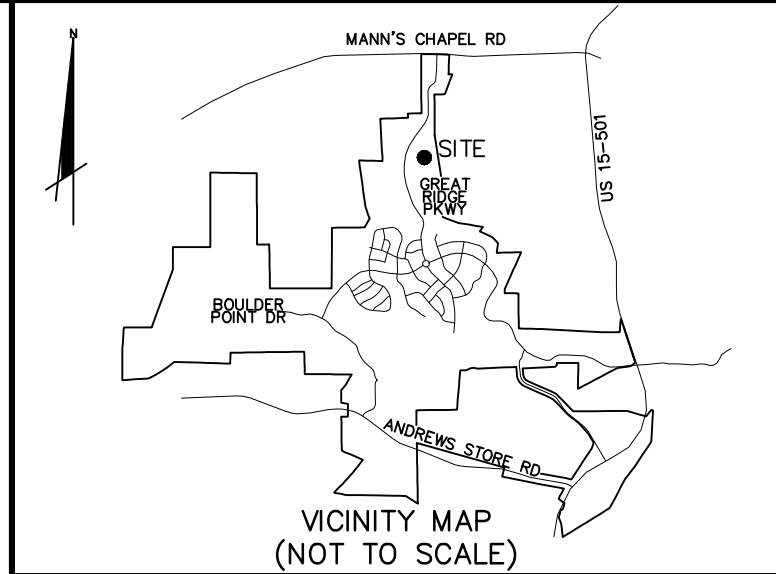
SEE SHEET 1 FOR NOTES, CERTIFICATIONS, LINE AND CURVE TABLES

DATE	REVISION	INITIAL

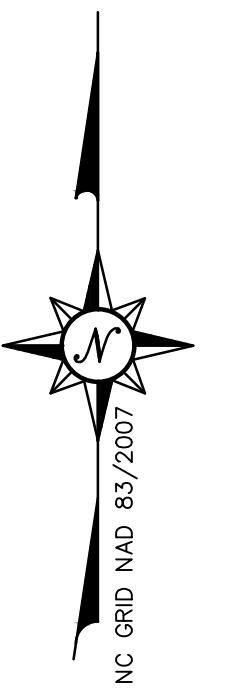
MCKIM & CREED
1730 Varsity Drive, Suite 500
Raleigh, North Carolina 27606
Phone: (919)233-8091, Fax: (919)233-8031
NC FIRM # F-1222
Internet Site: <http://www.mckimcreed.com>

FINAL SUBDIVISION, EASEMENT AND RIGHT-OF-WAY DEDICATION PLAT
OF
BRIAR CHAPEL DEVELOPMENT PHASE 13 SECTION 3
FOR
NNP-BRIAR CHAPEL, LLC
DATE: 06/09/2020 SCALE: 1" = 60'
BALDWIN TOWNSHIP CHATHAM COUNTY NORTH CAROLINA

PROJECT #: 27350239
PROJ. SVYR: DSC
DRAWN BY: JRC
FIELD BK.:
COMP. FILE: W8101_27350239_BC_PH13-3.0WG
SHEET #: 2 OF 3
DWG. #:



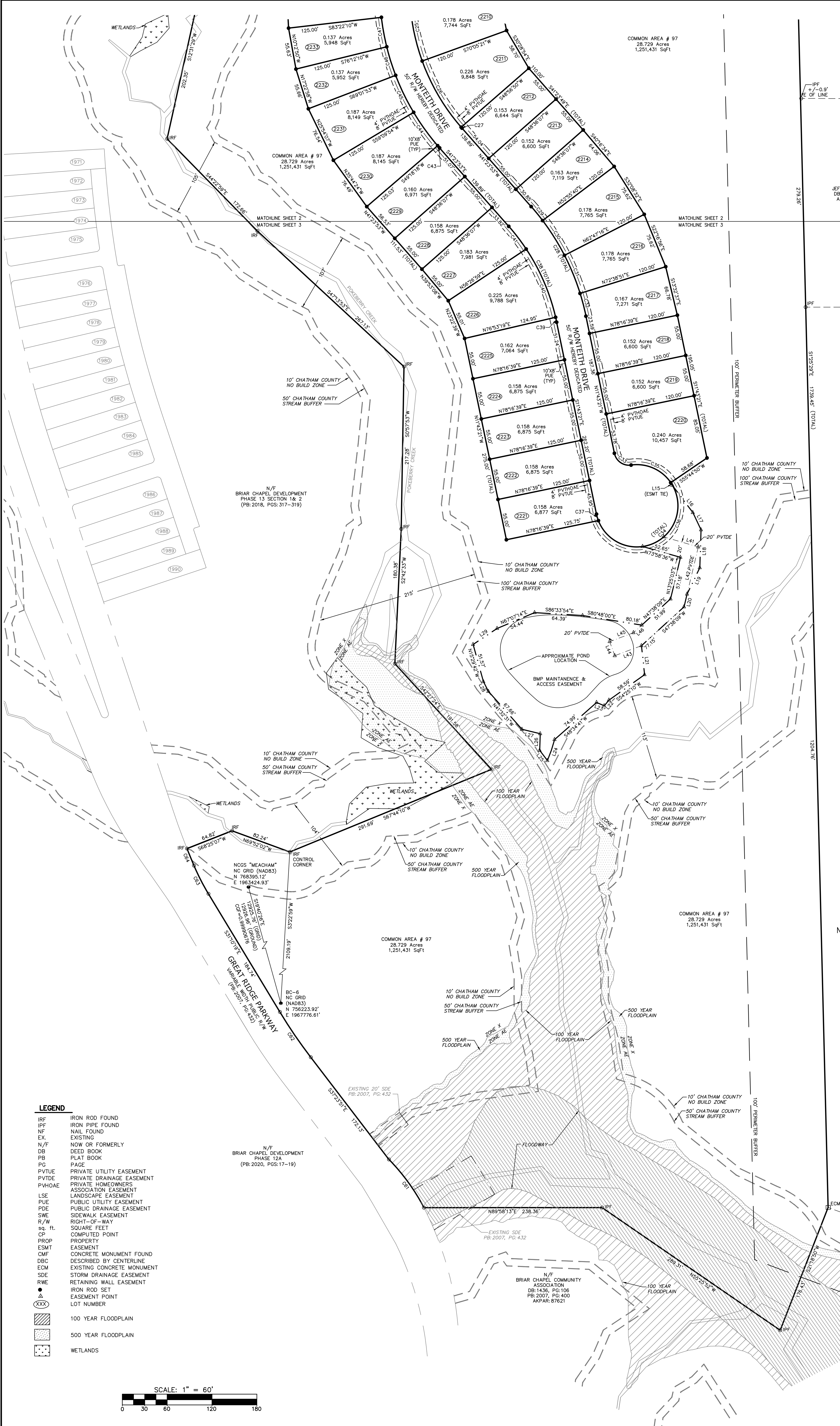
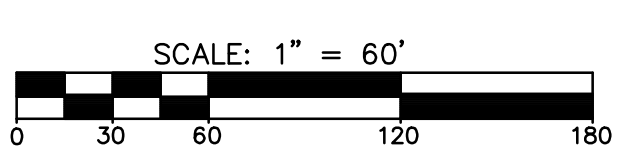
N/F
JEFFREY MAYNOR
DB: 754, PG: 251
AKPAR: 62259



N/F
MARJORIE L. OAKLEY
DB: 447, PG: 317
AKPAR: 73218

PRELIMINARY PLAT
NOT FOR RECORDATION, CONVEYANCE, OR SALES

- LEGEND**
- IRF IRON ROD FOUND
 - IPF IRON PIPE FOUND
 - NF NAIL FOUND
 - EX EXISTING
 - N/F NOW OR FORMERLY
 - DB DEED BOOK
 - PB PLAT BOOK
 - PE PRIVATE UTILITY EASEMENT
 - PVTOE PRIVATE DRAINAGE EASEMENT
 - PVHOAE PRIVATE HOMEOWNERS ASSOCIATION EASEMENT
 - LSE LANDSCAPE EASEMENT
 - PUE PUBLIC UTILITY EASEMENT
 - PDE PUBLIC DRAINAGE EASEMENT
 - SWE SIDEWALK EASEMENT
 - R/W RIGHT-OF-WAY
 - sq. ft. SQUARE FEET
 - CP COMPUTED POINT
 - PROP PROPERTY
 - ESMT EASEMENT
 - CMF CONCRETE MONUMENT FOUND
 - DBC DESCRIBED BY CENTERLINE
 - ECM EXISTING CONCRETE MONUMENT
 - SDE STORM DRAINAGE EASEMENT
 - RWE RETAINING WALL EASEMENT
 - IRON ROD SET
 - ▲ EASEMENT POINT
 - LOT NUMBER
 - ▨ 100 YEAR FLOODPLAIN
 - ▩ 500 YEAR FLOODPLAIN
 - ◼ WETLANDS



DATE	REVISION	INITIAL

MCKIM & CREED
1730 Varsity Drive, Suite 500
Raleigh, North Carolina 27606
Phone: (919)233-8091, Fax: (919)233-8031
NC FIRM # F-1222
Internet Site: <http://www.mckimcreed.com>

FINAL SUBDIVISION, EASEMENT AND RIGHT-OF-WAY DEDICATION PLAT
OF
BRIAR CHAPEL DEVELOPMENT PHASE 13 SECTION 3
FOR
NNP-BRIAR CHAPEL, LLC
DATE: 06/09/2020 SCALE: 1" = 60"
BALDWIN TOWNSHIP CHATHAM COUNTY NORTH CAROLINA

PROJECT #: 27350239
PROJ. SVYR: DSC
DRAWN BY: JRC
FIELD BK.:
COMP. FILE: W8101_27350239_BC_PH13-3.WG
SHEET #: 3 OF 3
DWG. #:

DATE: