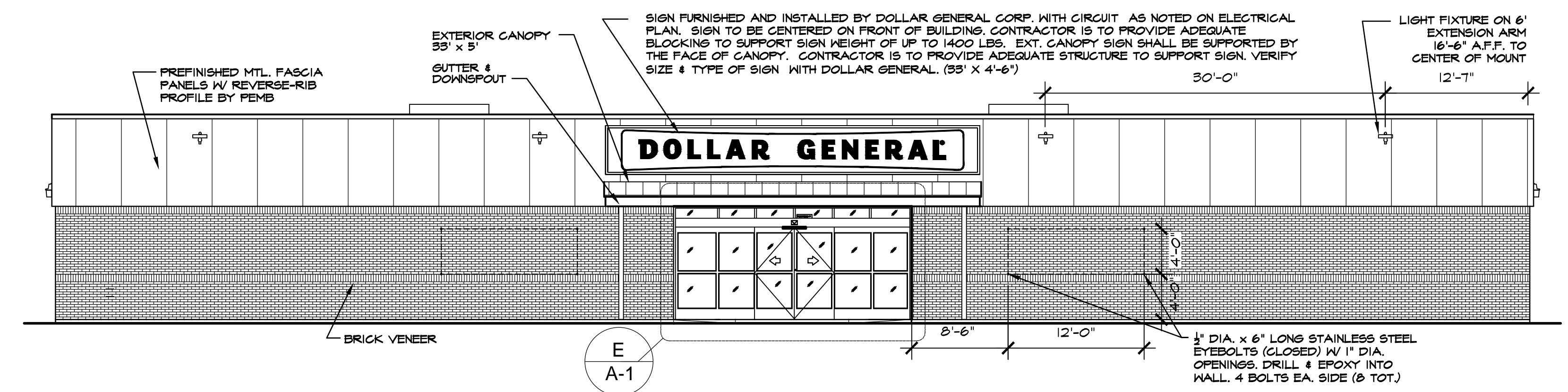


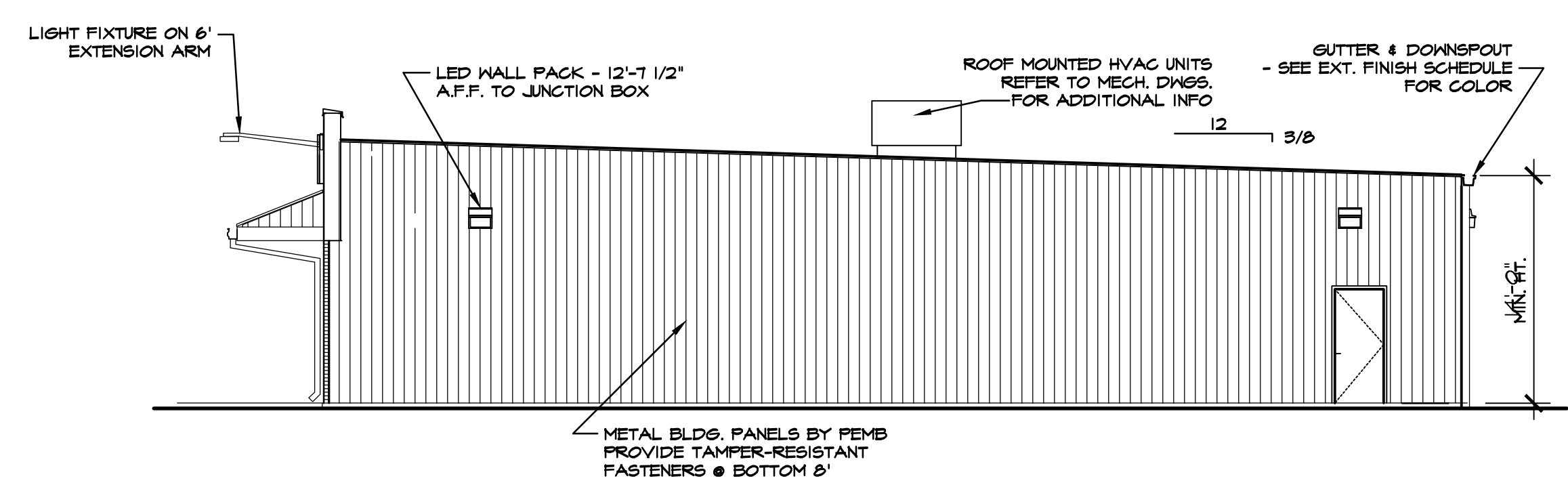
LEFT SIDE ELEVATION

SCALE: 1/8" = 1'-0"



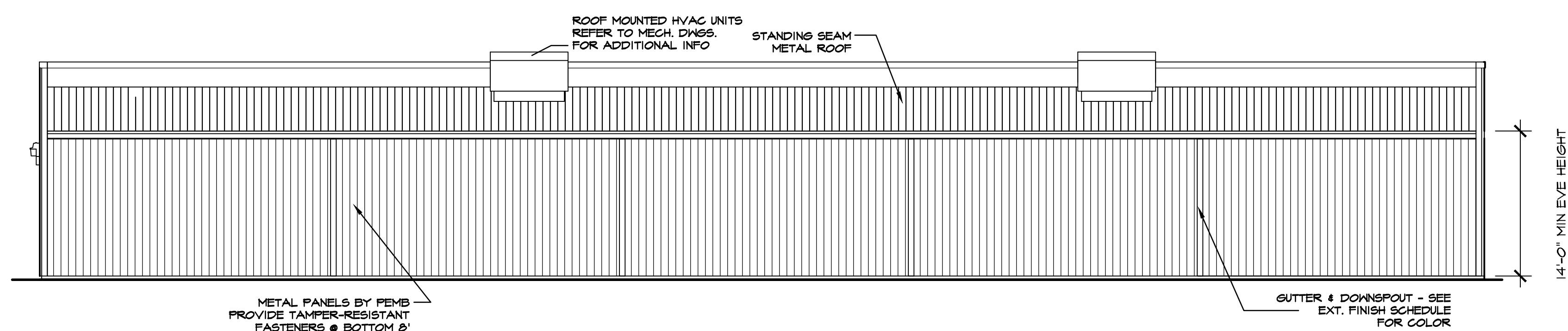
FRONT ELEVATION

SCALE: 1/8" = 1'-0"



RIGHT SIDE ELEVATION

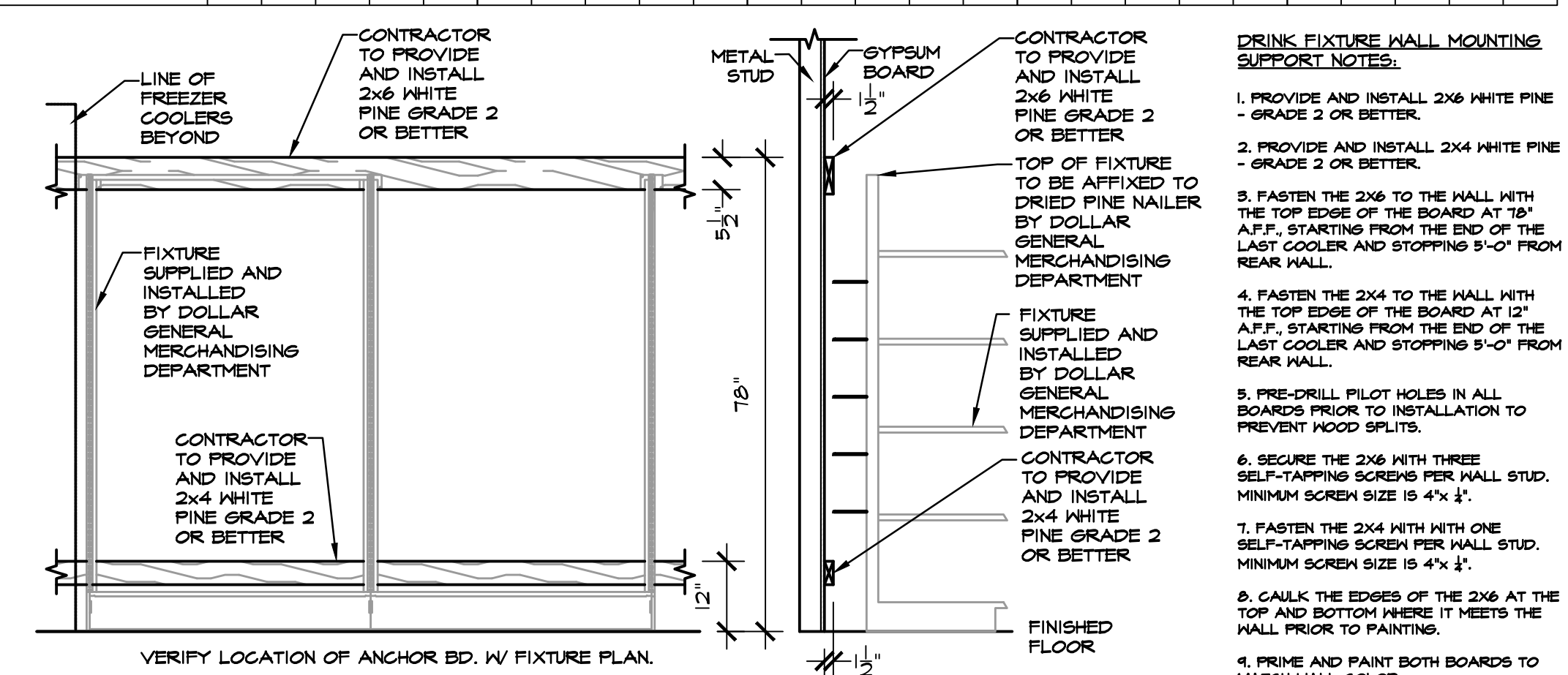
SCALE: 1/8" = 1'-0"



REAR ELEVATION

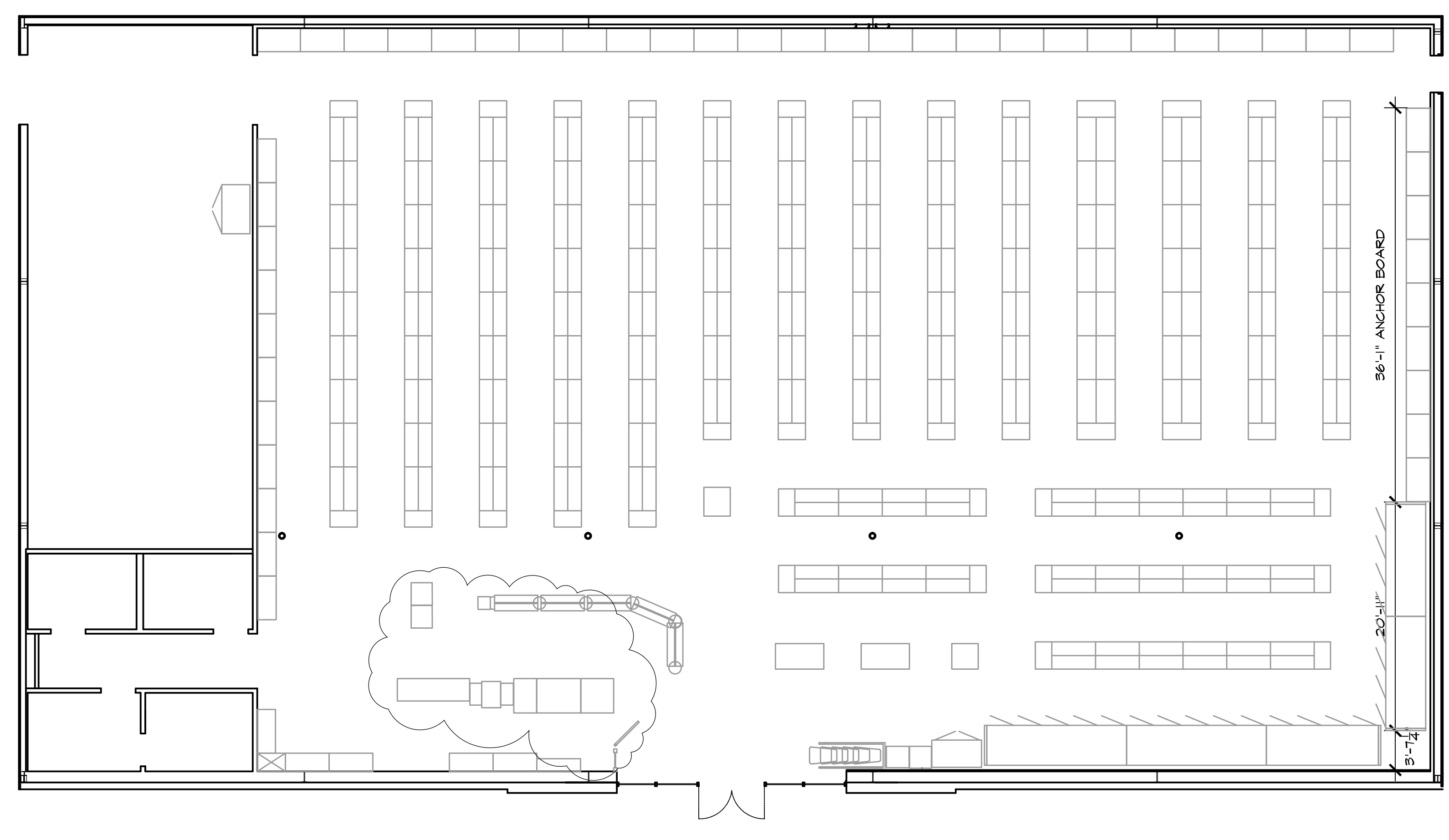
SCALE: 1/8" = 1'-0"

PRE-ENGINEERED METAL BUILDING VENDOR	VP BUILDINGS ATTN: DAVID ENGLISH (901) 748-6103	STAR BUILDING SYSTEMS ATTN: JEFF HORN (866) 664-8899	NUCOR BUILDING SYSTEMS ATTN: BOB BARRY (313) 622-4440 (262) 837-7891	BIG BEE STEEL BUILDINGS, INC. ATTN: KEVIN BUSLER (800) 653-3378	CHIEF BUILDINGS ATTN: ERIN SULLIVAN (303) 355-6023 (303) 390-8199
EXTERIOR FINISHES	COOL EGYPTIAN WHITE PATRIAN BRONZE KYNARK 500	BRONZE COOL COTTON WHITE GALVALUME	LIGHTSTONE MEDIUM BRONZE KYNARK 500 BRONZE POLAR WHITE GALVALUME	SANDSTONE BURNISHED SLATE BRONZE POLAR WHITE GALVALUME	PARCHEMENT ANTIQUE BRONZE BRONZE POLAR WHITE GALVALUME
EXTERIOR FINISHES ARE TO MATCH OR BE EQUAL TO VP METAL BUILDING SYSTEMS FINISH SELECTION.					
GUTTERS					
DOWN SPOUTS					
SIDE AND REAR METAL WALL PANELS & TRIM, RECEIVING & EMERGENCY EXIT DOORS					
BRICK VENEER LEE BRICK 206 SEVILLE					
FLAT METAL SOFFIT AT STOREFRONT VESTIBULE AREA					
BUILDING PARAPET WALL AND CANOPY					
STOREFRONT SYSTEM					
STANDING SEAM METAL ROOF PANELS					
LINER PANELS (INTERIOR SALES FLOOR)					



DRINK FIXTURE SUPPORT DETAIL

SCALE: 1/2" = 1'-0"



FIXTURE LAYOUT (CONFIRM W/ DOLLAR GENERAL PLANS)

SCALE: 1/8" = 1'-0"



ISSUED FROM:
 WILMINGTON OFFICE
 805 North Fourth Street
 Wilmington, NC 28401
 Phone: 910.251.8899
 Facsimile: 910.251.9889
 WILSON OFFICE
 252.399.2700
 Phone: 252.399.2701
 Facsimile: 252.399.2701

HOOD • HERRING
 ARCHITECTURE
 P.L.L.P.
 These documents are instruments of service & as such are the property of the Architects. Reproduction without written permission is prohibited.

DOLLAR GENERAL
 STORE # 21667
 ELMER MOORE ROAD
 BONLEE, NORTH CAROLINA

JOB NUMBER
 DRAWN BY
 JCH
 DATE
 05/21/20
 REVISIONS
 6/3/20 - CHECKOUT

SHEET NUMBER
A-2
 OF