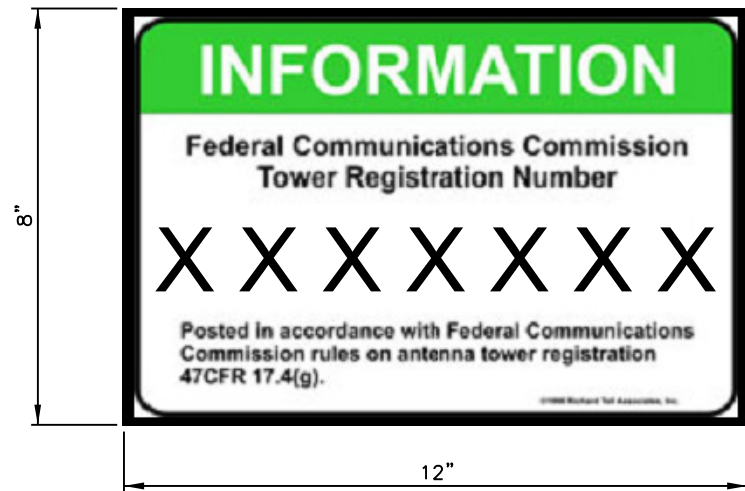
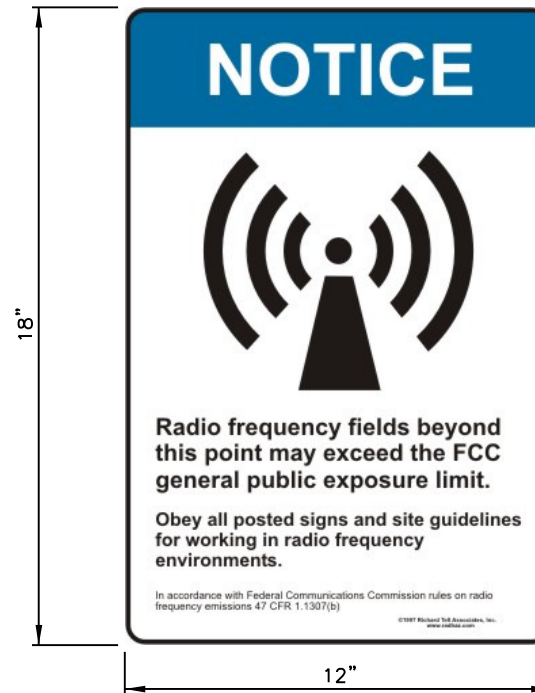


NOTE:
RICHARD TELL & ASSOC.
PART: MPN/SKU 8X12FTRK



1
D-6 SITE REGISTRATION SIGN
NOT TO SCALE

NOTE:
RICHARD TELL & ASSOC.
PART: MPN/SKU 12X18RFN



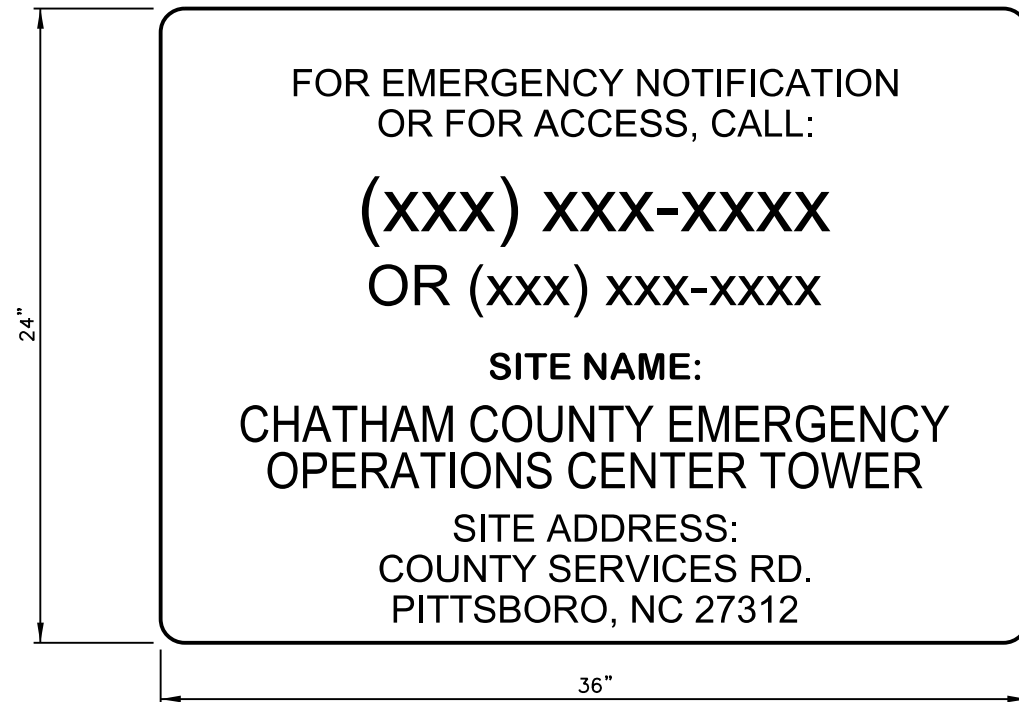
2
D-6 RF WARNING SIGN
NOT TO SCALE

NOTE:
GRAINGER
PART: 6RPWB



3
D-6 NO TRESPASSING SIGN
NOT TO SCALE

NOTES:
SMALL TEXT SHALL HAVE A MINIMUM TEXT HEIGHT OF 1.75".
LARGE TEXT SHALL HAVE A MINIMUM TEXT HEIGHT OF 2.5".



4
D-6 SITE CONTACT INFORMATION SIGN
NOT TO SCALE

SITE SIGNAGE NOTES:

1. CONTRACTOR TO SUPPLY AND INSTALL SITE SIGNAGE, AND SHALL CONFIRM WITH MOTOROLA CONSTRUCTION MANAGER FOR TOWER REGISTRATION NUMBER AND EMERGENCY NOTIFICATION INFORMATION PRIOR TO ORDERING SIGNAGE.
2. WARNING AND SITE INFORMATION SIGNS SHALL BE PROVIDED AND PLACED ON THE FENCE FABRIC BY CONTRACTOR. SIGNAGE SHALL MEET ALL FEDERAL, STATE, AND LOCAL REGULATIONS AND MOTOROLA R-56 REQUIREMENTS FOR SITE SIGNAGE. SIGNAGE SHALL BE IMPERVIOUS TO WEATHER AND BE MOUNTED TO AVOID EASE OF REMOVAL BY VANDALS.
3. CONTRACTOR SHALL REFER TO MOTOROLA R56 FOR ADDITIONAL INFORMATION ABOUT REQUIRED MINIMUM SIGNAGE.

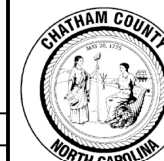
NO.	DATE	REVISION
90%	07/01/2020	90% ZONING DRAWINGS

KCI
ASSOCIATES OF NC
4505 FALLS OF NEUSE RD.,
SUITE 400
RALEIGH, NORTH CAROLINA 27609
(919) 783-9214
ENGINEERS • PLANNERS • ECOLOGISTS

MOTOROLA SOLUTIONS
MOTOROLA SOLUTIONS, INC.
8720 RED OAK BLVD., SUITE 123
CHARLOTTE, NC 28217
CONTACT: HEATHER MASON
PHONE: (513) 470-6238

CHATHAM COUNTY EMERGENCY
OPERATION CENTER TOWER
COUNTY SERVICES RD.
PITTSBORO, NC 27312
CHATHAM COUNTY, NC

DATE OF ORIGINATION : 03/01/2020
DRAWN BY : TNW APPROVED BY :
CHECKED BY : KCI# : 011904897_x



CHATHAM COUNTY, NC
EMERGENCY OPERATIONS
80-A EAST STREET
PITTSBORO, NC 27312
(919) 542-8204

SITE SIGNAGE
DETAILS
D-6

SEAL: