

Review ONLY by:
Chatham County Planning Dept
Zoning Administrator, Angela Plummer
 07/07/2020 1:36:30 PM

1
 SS-1
SITE SKETCH
 SCALE: 1" = 100'-0"

NO.	DATE	REVISION
90%	08/30/2019	90% SITE SKETCH
95%	10/04/2019	95% SITE SKETCH

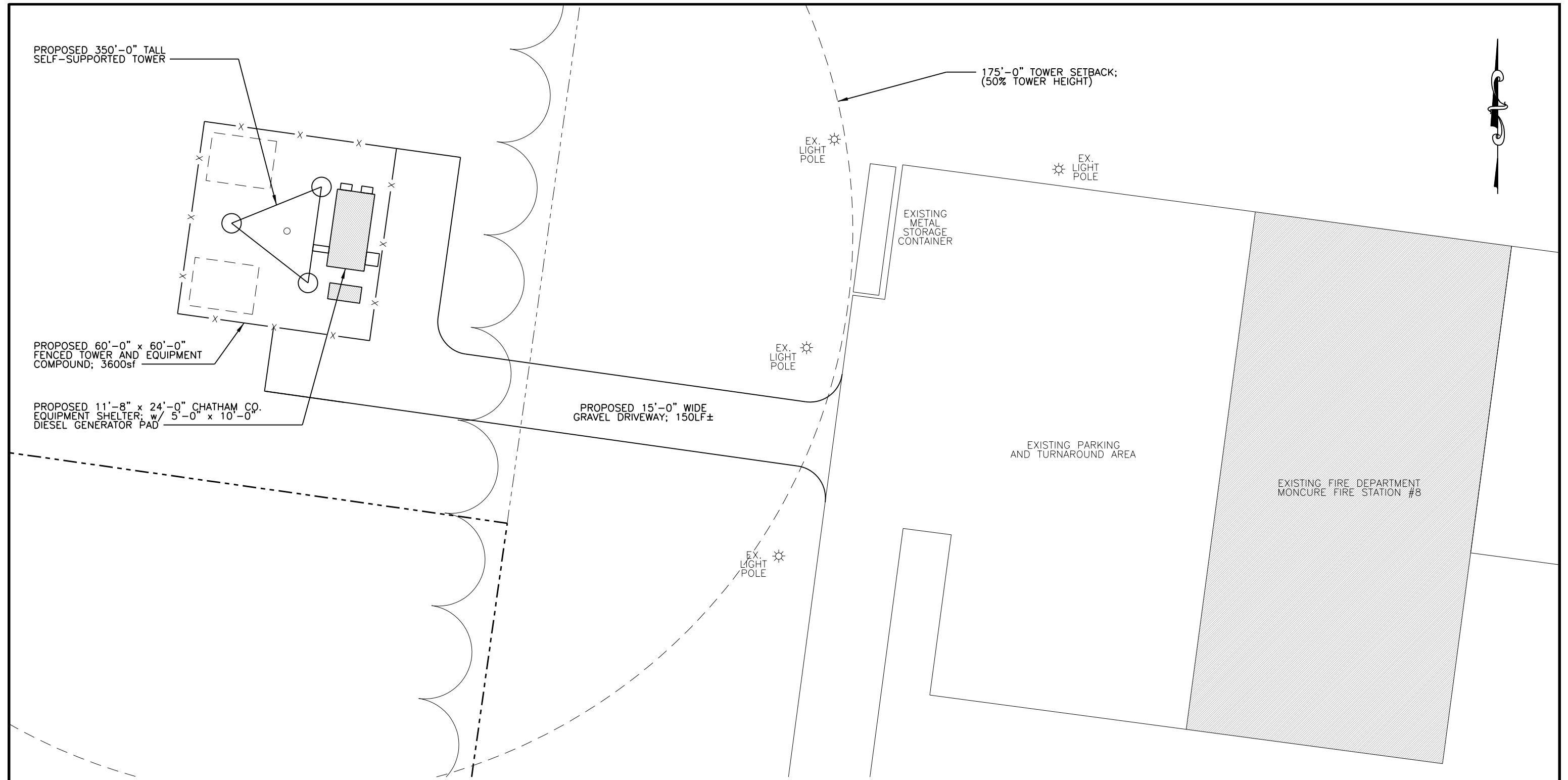
KCI
TECHNOLOGIES
 4505 FALLS OF NEUSE RD.,
 SUITE 400
 RALEIGH, NORTH CAROLINA 27609
 (919) 783-9214
 ENGINEERS • PLANNERS • ECOLOGISTS

MOTOROLA SOLUTIONS
 MOTOROLA SOLUTIONS, INC.
 8720 RED OAK BLVD., SUITE 123
 CHARLOTTE, NC 28217
 CONTACT: CARL CARDINALE
 PHONE: (704) 609-6182

MONCURE FIRE STATION
 2389 OLD US HIGHWAY 1
 MONCURE, NC 27559
 CHATHAM COUNTY, NC
 DATE OF ORIGATION : 07/01/2019
 DRAWN BY : TNW APPROVED BY :
 CHECKED BY : KCI# : 0119xxxxx_x

CHATHAM COUNTY
 NORTH CAROLINA
 CHATHAM COUNTY, NC
 PLANNING DEPARTMENT
 80-A EAST STREET.
 PITTSBORO, NC 27312
 (919) 542-8204

SITE SKETCH
SS-1
 SEAL:



1
SS-2

SITE SKETCH

SCALE: 1" = 30'-0"

NO.	DATE	REVISION
90%	08/30/2019	90% SITE SKETCH
95%	10/04/2019	95% SITE SKETCH

KCI
TECHNOLOGIES

4505 FALLS OF NEUSE RD.,
SUITE 400
RALEIGH, NORTH CAROLINA 27609
(919) 783-9214
ENGINEERS • PLANNERS • ECOLOGISTS

MOTOROLA SOLUTIONS

MOTOROLA SOLUTIONS, INC.
8720 RED OAK BLVD., SUITE 123
CHARLOTTE, NC 28217

CONTACT: CARL CARDINALE
PHONE: (704) 609-6182

MONCURE FIRE STATION

2389 OLD US HIGHWAY 1
MONCURE, NC 27559
CHATHAM COUNTY, NC

DATE OF ORIGATION : 07/01/2019

DRAWN BY : TNW APPROVED BY :

CHECKED BY : KCI# : 0119xxxxx_x

CHATHAM COUNTY, NC
PLANNING DEPARTMENT
80-A EAST STREET.
PITTSBORO, NC 27312
(919) 542-8204

SEAL:

SITE SKETCH

SS-2