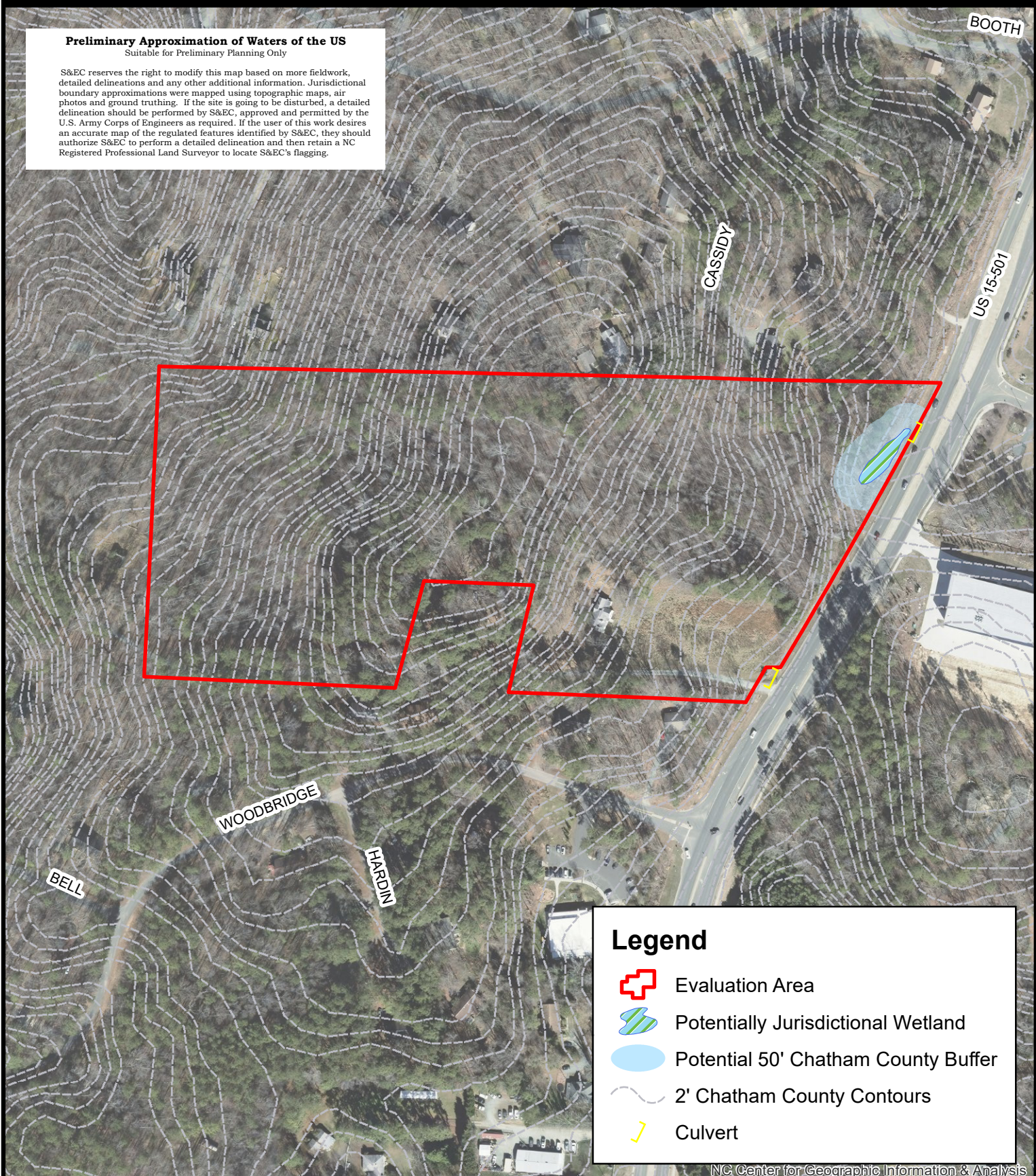







Preliminary Approximation of Waters of the US
 Suitable for Preliminary Planning Only

S&EC reserves the right to modify this map based on more fieldwork, detailed delineations and any other additional information. Jurisdictional boundary approximations were mapped using topographic maps, air photos and ground truthing. If the site is going to be disturbed, a detailed delineation should be performed by S&EC, approved and permitted by the U.S. Army Corps of Engineers as required. If the user of this work desires an accurate map of the regulated features identified by S&EC, they should authorize S&EC to perform a detailed delineation and then retain a NC Registered Professional Land Surveyor to locate S&EC's flagging.



Legend

-  Evaluation Area
-  Potentially Jurisdictional Wetland
-  Potential 50' Chatham County Buffer
-  2' Chatham County Contours
-  Culvert

NC Center for Geographic Information & Analysis

Project Number: **14231.W1**

Project Manager: **SB**

Scale: **1" = 200'**

Date: **05/04/2020**

Map Title: **Preliminary Wetland Map**

Stone Property
Chatham County, NC

Source: **Aerial from NC One Map**

0 250 500
 Feet

S&EC
Soil & Environmental Consultants, PA
 8412 Falls of Neuse Road, Suite 104, Raleigh, NC 27615 • Phone: (919) 846-5900 • Fax: (919) 846-9467
 sandec.com