

LIGHTING PLAN NOTES

1. THE CE GROUP, INC. IS NOT RESPONSIBLE FOR SAFETY AND SECURITY RISKS DUE INADEQUATE LIGHTING LEVELS.
2. MAINTAINED FOOTCANDLES AT GRADE USING A 0.72 LIGHT LOSS FACTOR.
3. LIGHT LEVELS MODELED USING VISUAL - PROFESSIONAL EDITION SOFTWARE, VERSION 2.06.0234
4. ALL FIXTURES TO MEET IESNA FULL CUTOFF CLASSIFICATION.
5. UNDERGROUND UTILITIES (EXISTING AND PROPOSED) ARE FOR INFORMATIONAL PURPOSES ONLY. SEE APPROPRIATE SHEET IN THIS SET FOR DETAILS. CONTRACTOR TO VERIFY THE HORIZONTAL AND VERTICAL LOCATION OF ALL UTILITIES PRIOR TO CONSTRUCTION, AND NOTIFY THE OWNER AND/OR ENGINEER OF ANY DISCREPANCIES PRIOR TO THE COMMENCEMENT OF WORK.
6. SEE ARCHITECTURAL DRAWINGS FOR INFORMATION REGARDING EXTERIOR DECORATIVE FIXTURES.

LIGHTING DATA	
PARKING AREA	
AVERAGE	2.9 fc
MAXIMUM	31.9 fc
MINIMUM	0.8 fc
AVG / MIN	3.6 : 1

LEGEND

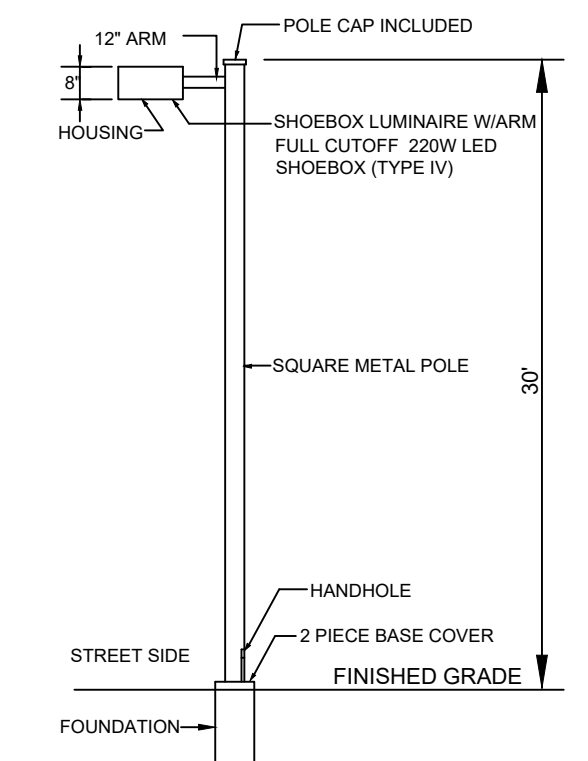
- SHOEBOX LIGHTS
8 EA - DUKE ENERGY PROGRESS SHOEBOX - 220W LED - TYPE IV THROW PATTERN FULL CUTOFF- 30' MOUNTING HEIGHT
- WALL PACKS
14 EA - EAGLE II SERIES WALL PACK- OR APPROVED EQUAL - HIGH PRESSURE SODIUM, PRESSED GLASS LENS 150 WATT - 12' MOUNTING HEIGHT



LIGHTING EXHIBIT FOR 15/501 MINI STORAGE CHATHAM COUNTY, NORTH CAROLINA JULY 2, 2020

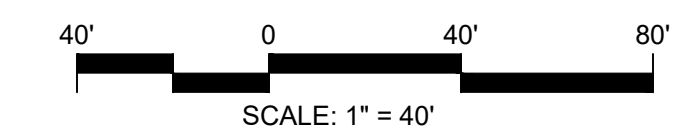
SITE DATA

EXISTING SITE:	
TOTAL PROPERTY ACREAGE:	± 17.64 ACRES
PROPERTY OWNER:	MAURICE E. STONE
AKPAR:	3080
ADDRESS:	72 MARVIN EDWARDS LN CHAPEL HILL, NORTH CAROLINA
EXISTING ZONING:	R-2
WATERSHED DISTRICT:	WS-II BW, WS-IV PA
PROPOSED SITE:	
TOTAL CONDITIONAL ZONING DIST:	± 7.93 ACRES
PROPOSED ZONING:	CU-RB (MINI STORAGE)
PROPOSED R.O.W. DEDICATION:	± 0.01 ACRES
PROPOSED DEVELOPMENT	
PARCEL 1:	± 7.92 ACRES
STORAGE AREA:	± 99,050 SF
IMPERVIOUS:	± 108,793 SF (± 31.53%)



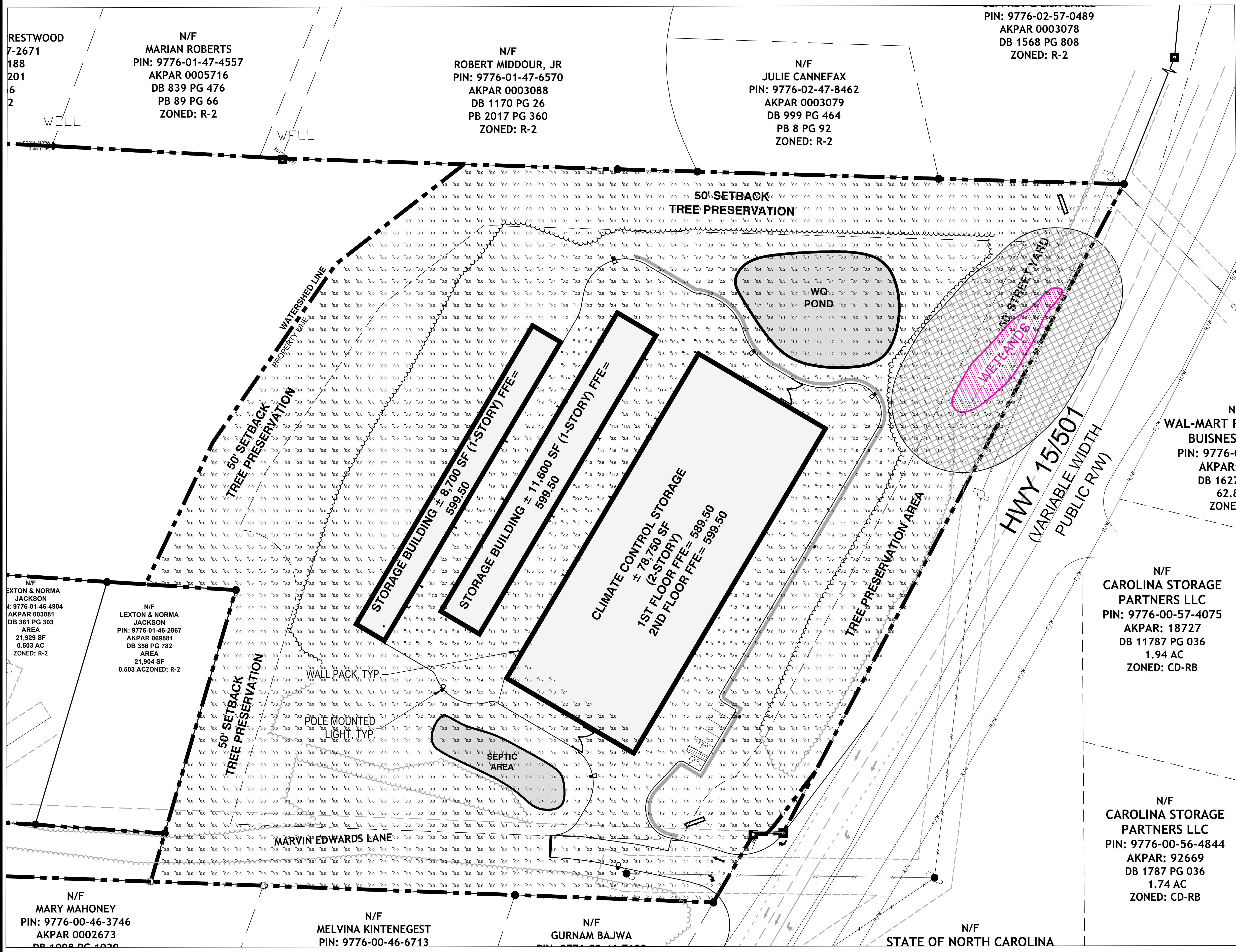
- NOTES:**
1. FINAL LEVELING OF POLE IS TO BE MADE THROUGH USE OF DOUBLE NUTS.
 2. ALL FOUR SIDES OF POLE ARE DRILLED WITH 3 HOLES AS SHOWN IN INSERT AND WASHERS PROVIDED WITH ANCHOR BOLTS OR GALVANIZED SHIMS. ABOVE TO ACCOMMODATE A MAXIMUM OF FOUR LUMINAIRES. STEEL PLATES OR PLUG COVER EACH SIDE UNTIL UNITS ARE INSTALLED.
 3. SPECIAL HANDLING OF THESE SQUARE POLES IS NECESSARY TO MINIMIZE DAMAGE TO FINISH OF POLE. A NYLON SLING SHOULD BE USED TO LIFT POLE AT ALL TIMES. CHAINS, CABLES, OR ROPES MUST NOT BE USED. A CAN OF TOUCH-UP PAINT IS INCLUDED WITH ACCESSORIES FOR EACH POLE.
 4. FOLLOW MANUFACTURER'S INSTRUCTIONS FOR ASSEMBLY AND ATTACHMENT OF FIXTURE(S) AND ARM(S) TO POLE.
 5. WHEN APPLICABLE, NEW POLE SHALL BE POSITIONED SUCH THAT THE HANDHOLE IS FACING AWAY FROM THE STREET.
 6. FOR MULTIPLE LIGHTING CIRCUITS, CONNECT THE SOURCE AND LOAD CONDUCTORS INTO THE HANDHOLE AND CONNECT USING WIRE NUTS FOR ALL #10 CONDUCTORS OR THE STREETLIGHT CONNECTION BLOCK FOR LARGER (#10 MAX.) SOURCE AND LOAD CONDUCTORS.

SHOEBOX LUMINAIRES AND SQUARE POLES
N.T.S.



PRELIMINARY
FOR REVIEW ONLY

NOT RELEASED
FOR CONSTRUCTION



RESTWOOD
7-2671
188
201
6
2

N/F
MARIAN ROBERTS
PIN: 9776-01-47-4557
AKPAR 0005716
DB 839 PG 476
PB 89 PG 66
ZONED: R-2

N/F
ROBERT MIDDOUR, JR
PIN: 9776-01-47-6570
AKPAR 0003088
DB 1170 PG 26
PB 2017 PG 360
ZONED: R-2

N/F
JULIE CANNEFAX
PIN: 9776-02-47-8462
AKPAR 0003079
DB 999 PG 464
PB 8 PG 92
ZONED: R-2

PIN: 9776-02-57-0489
AKPAR 0003078
DB 1568 PG 808
ZONED: R-2

N/F
CAROLINA STORAGE
PARTNERS LLC
PIN: 9776-00-57-4075
AKPAR: 18727
DB 11787 PG 036
1.94 AC
ZONED: CD-RB

N/F
CAROLINA STORAGE
PARTNERS LLC
PIN: 9776-00-56-4844
AKPAR: 92669
DB 1787 PG 036
1.74 AC
ZONED: CD-RB

N/F
EXTON & NORMA
JACKSON
K: 9776-01-46-4904
AKPAR 003081
DB 361 PG 303
AREA
21,929 SF
0.503 AC
ZONED: R-2

N/F
LEXTON & NORMA
JACKSON
PIN: 9776-01-46-2867
AKPAR 069881
DB 356 PG 782
AREA
21,904 SF
0.503 AC ZONED: R-2

N/F
MARY MAHONEY
PIN: 9776-00-46-3746
AKPAR 0002673
DB 1008 PG 1008

N/F
MELVINA KINTENEGEST
PIN: 9776-00-46-6713

N/F
GURNAM BAJWA
PIN: 9776-00-46-6700

N/F
STATE OF NORTH CAROLINA