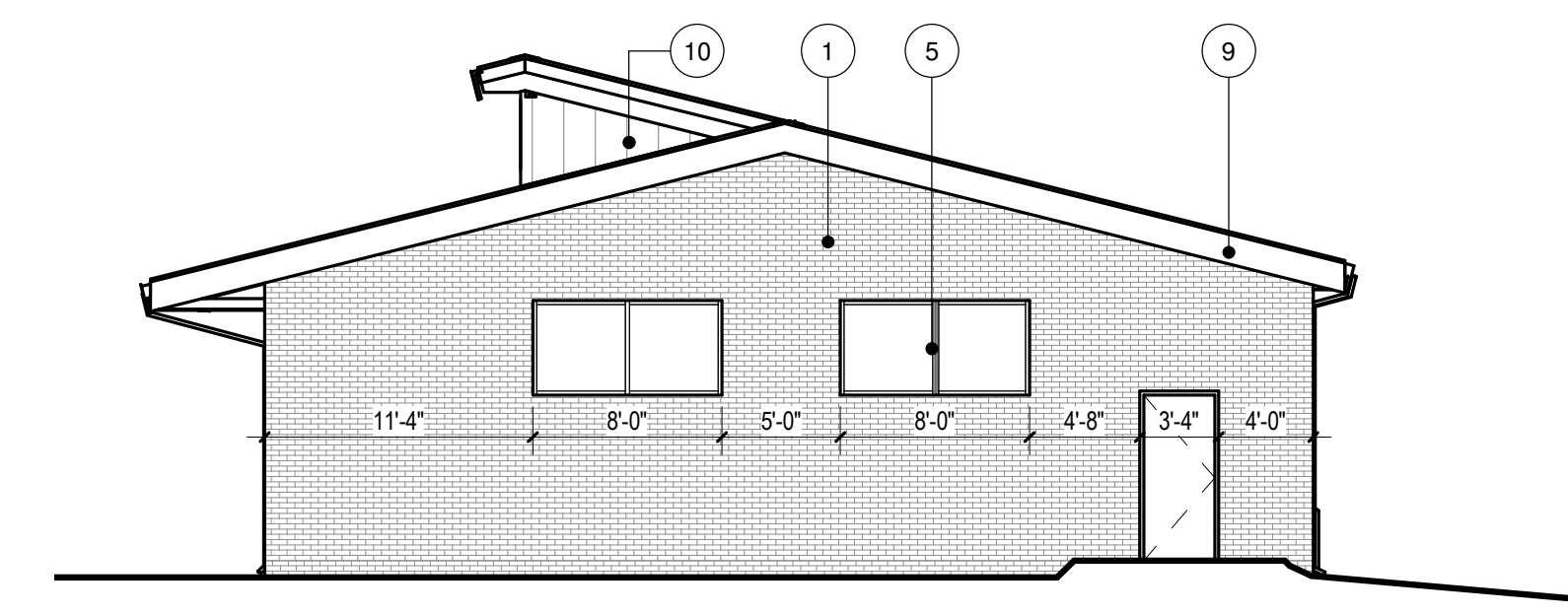
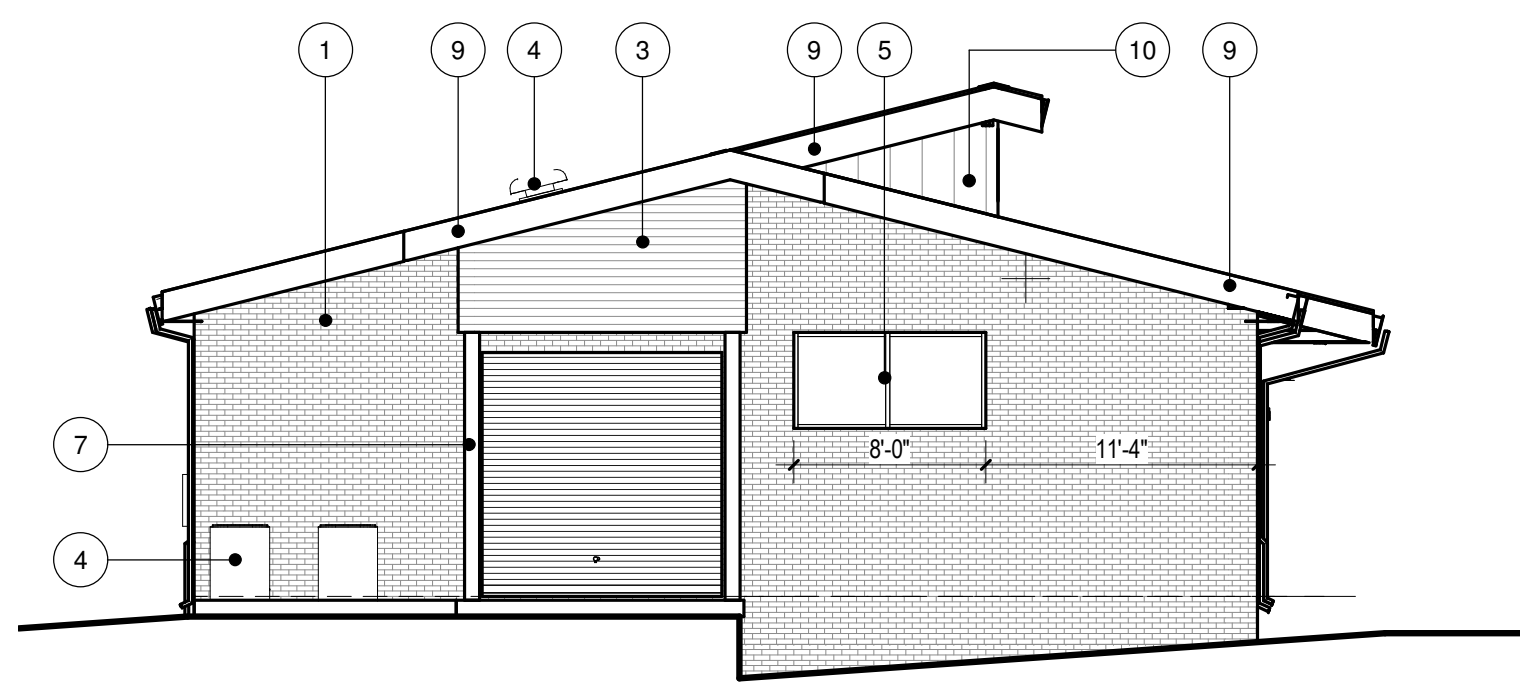


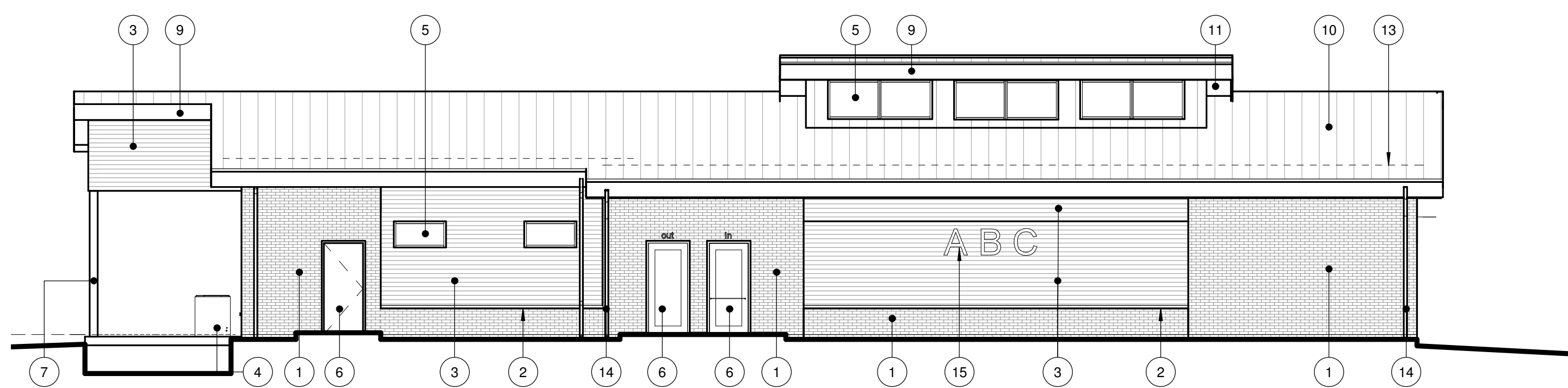
1 FLOOR PLAN
SCALE: 1/8" = 1'-0"



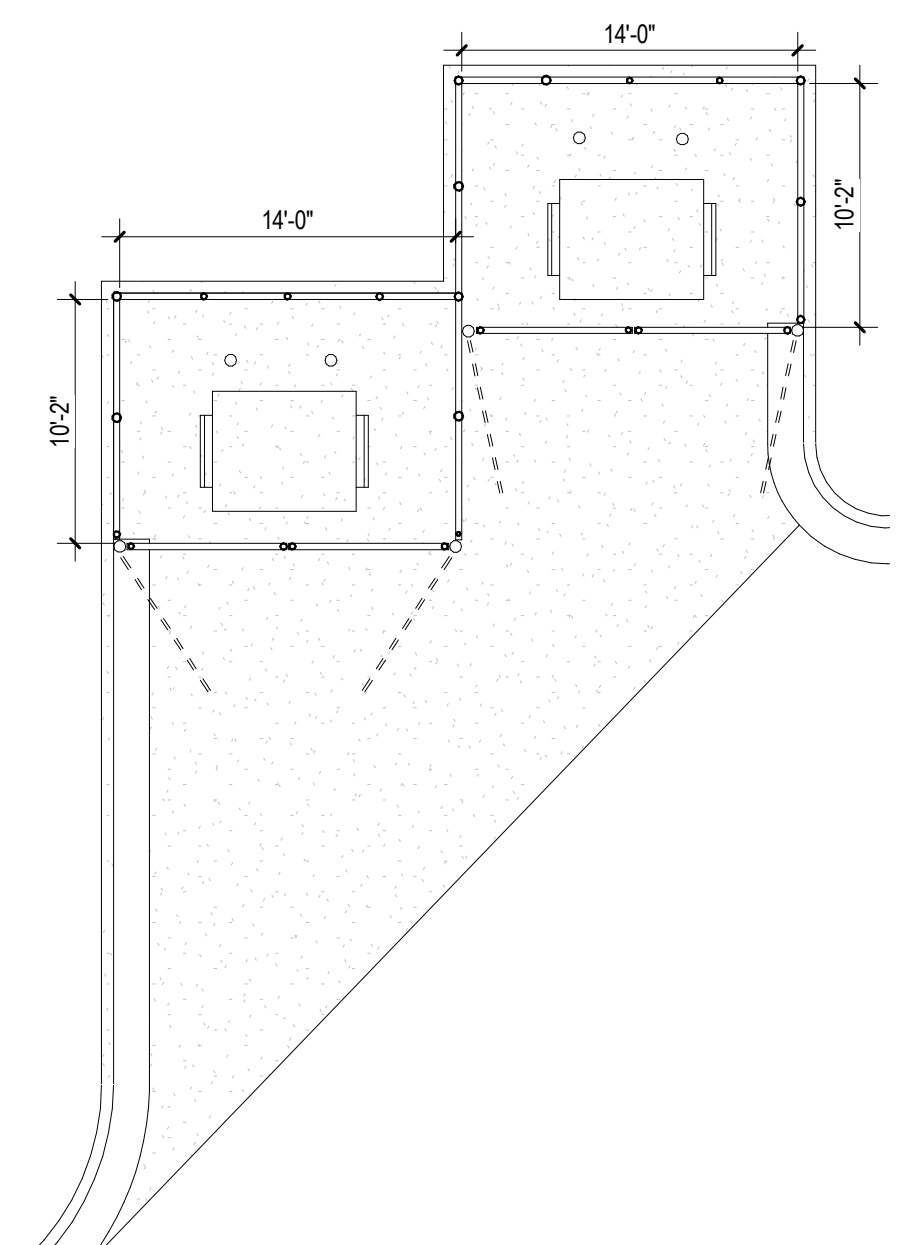
4 EAST ELEVATION
SCALE: 1/8" = 1'-0"



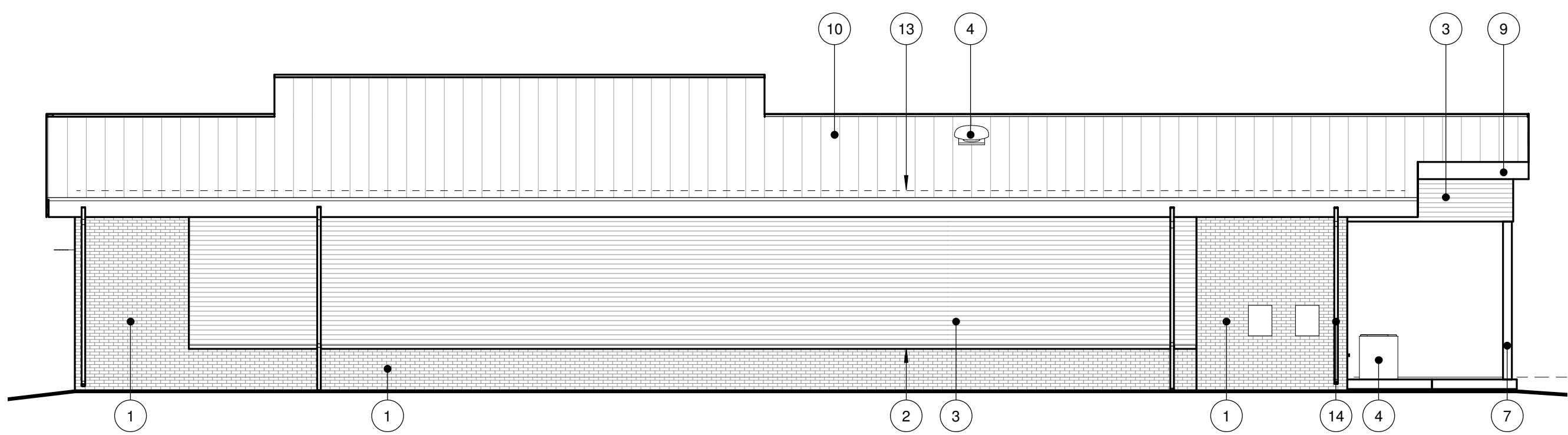
5 WEST ELEVATION
SCALE: 1/8" = 1'-0"



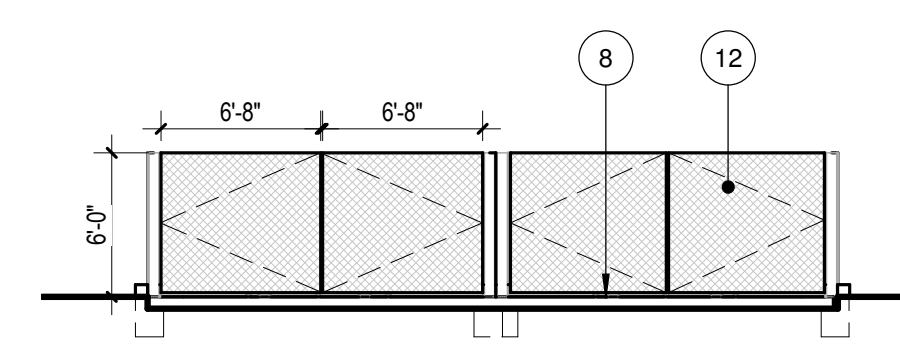
2 FRONT (SOUTH) ELEVATION1
SCALE: 1/8" = 1'-0"



6 DUMPSTER PLAN
SCALE: 1/8" = 1'-0"



3 REAR (NORTH) ELEVATION1
SCALE: 1/8" = 1'-0"



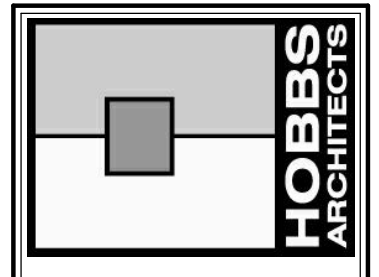
7 DUMPSTER SCREEN
SCALE: 1/8" = 1'-0"

EXTERIOR MATERIALS

1. 4" BRICK MASONRY VENEER.
2. BRICK SPECIAL SHAPE WATER TABLE.
3. FIBER CEMENT ARTISAN HORIZONTAL LAP SIDING ON VERTICAL 1x4 PT FURRING STRIPS.
4. MECHANICAL EQUIPMENT; REFER TO MECHANICAL PLANS
5. ALUMINUM STOREFRONT GLAZING.
6. ALUMINUM CLAD DOOR.
7. WOOD POST; REFER TO STRUCTURAL PLANS.
8. CONCRETE PAVING; REFER TO CIVIL DRAWINGS FOR MORE INFORMATION.
9. BRAKE METAL FASCIA TO MATCH SSMR.
10. STANDING SEAM METAL ROOFING ASSEMBLY.
11. FIBER CEMENT SOFFIT BOARD.
12. VINYL-COATED CHAIN LINK FENCING WITH PRIVACY SLATS.
13. CONTINUOUS RAIL SNOW GUARD.
14. GUTTER AND DOWNSPOUT.
15. BUILDING SIGNAGE, TBD.

ELEVATION GENERAL NOTES

1. JOINTS ARE TO BE AS INDICATED IN ELEVATIONS.
2. REFER TO WALL SECTIONS FOR DETAILED ASSEMBLIES.
3. ALL EXTERIOR EXPOSED WOOD TO BE PAINTED.
4. REFER TO ENGINEERING DRAWINGS FOR LOCATIONS OF EXTERIOR WALL MOUNTED LIGHTS, OUTLETS, HOSE BIBBS, AND OTHERS.



HOBBS ARCHITECTS, PA
Architects & Consultants
159 West Salisbury Street
PO Box 1457
Pittsboro, North Carolina 27312
Voice: (919) 545-2004
Fax: (919) 545-9002



ABC Store Moncure
Chatham County ABC
Moncure-Pittsboro Road || Moncure, NC

No.	Date

ABC
MONCURE
SCHEMATIC
DESIGN

DATE
04.14.2020

A-1