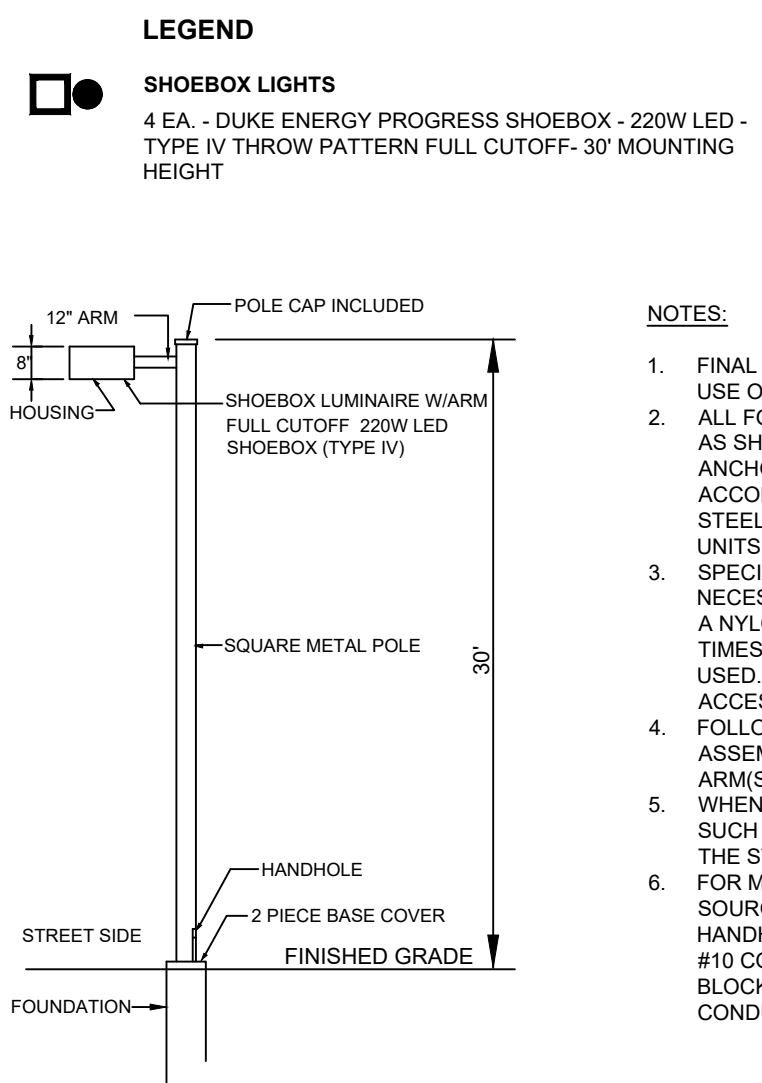


**LIGHTING PLAN NOTES**

1. THE CE GROUP, INC. IS NOT RESPONSIBLE FOR SAFETY AND SECURITY RISKS DUE INADEQUATE LIGHTING LEVELS.
2. MAINTAINED FOOTCANDLES AT GRADE USING A 0.72 LIGHT LOSS FACTOR.
3. LIGHT LEVELS MODELED USING VISUAL - PROFESSIONAL EDITION SOFTWARE, VERSION 2.06.0234
4. ALL FIXTURES TO MEET IESNA FULL CUTOFF CLASSIFICATION.
5. UNDERGROUND UTILITIES (EXISTING AND PROPOSED) ARE FOR INFORMATIONAL PURPOSES ONLY. SEE APPROPRIATE SHEET IN THIS SET FOR DETAILS. CONTRACTOR TO VERIFY THE HORIZONTAL AND VERTICAL LOCATION OF ALL UTILITIES PRIOR TO CONSTRUCTION, AND NOTIFY THE OWNER AND/OR ENGINEER OF ANY DISCREPANCIES PRIOR TO THE COMMENCEMENT OF WORK.
6. SEE ARCHITECTURAL DRAWINGS FOR INFORMATION REGARDING EXTERIOR DECORATIVE FIXTURES.

LIGHTING DATA	
PARKING AREA	
AVERAGE	2.0 fc
MAXIMUM	4.3 fc
MINIMUM	0.5 fc
AVG / MIN	4.0 : 1



SHOEBOX LUMINAIRE AND SQUARE POLES  
N.T.S.

**LEGEND**

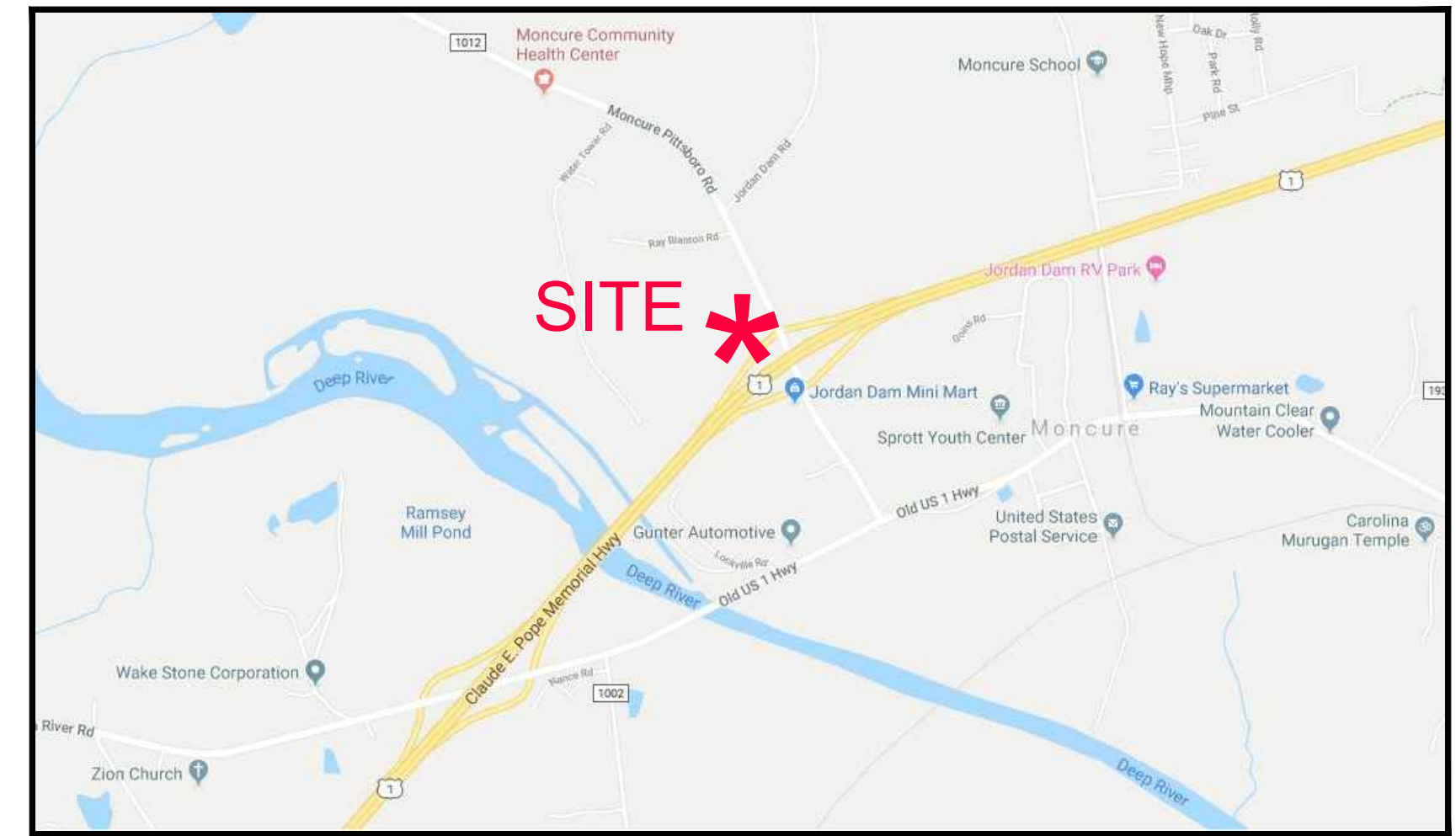
SHOEBOX LIGHTS  
4 EA - DUKE ENERGY PROGRESS SHOEBOX - 220W LED - TYPE IV THROW PATTERN FULL CUTOFF - 30' MOUNTING HEIGHT

**NOTES:**

1. FINAL LEVELING OF POLE IS TO BE MADE THROUGH USE OF DOUBLE NUTS.
2. ALL FOUR SIDES OF POLE ARE DRILLED WITH 3 HOLES AS SHOWN IN INSERT AND WASHERS PROVIDED WITH ANCHOR BOLTS OR GALVANIZED SHIMS. ABOVE TO ACCOMMODATE A MAXIMUM OF FOUR LUMINAIRE. STEEL PLATES OR PLUG COVER EACH SIDE UNTIL UNITS ARE INSTALLED.
3. SPECIAL HANDLING OF THESE SQUARE POLES IS NECESSARY TO MINIMIZE DAMAGE TO FINISH OF POLE. A NYLON SLING SHOULD BE USED TO LIFT POLE AT ALL TIMES. CHAINS, CABLES, OR ROPES MUST NOT BE USED. A CAN OF TOUCH-UP PAINT IS INCLUDED WITH ACCESSORIES FOR EACH POLE.
4. FOLLOW MANUFACTURER'S INSTRUCTIONS FOR ASSEMBLY AND ATTACHMENT OF FIXTURE(S) AND ARM(S) TO POLE.
5. WHEN APPLICABLE, NEW POLE SHALL BE POSITIONED SUCH THAT THE HANDHOLE IS FACING AWAY FROM THE STREET.
6. FOR MULTIPLE LIGHTING CIRCUITS, CONNECT THE SOURCE AND LOAD CONDUCTORS INTO THE HANDHOLE AND CONNECT USING WIRE NUTS FOR ALL #10 CONDUCTORS OR THE STREETLIGHT CONNECTION BLOCK FOR LARGER (1/0 MAX.) SOURCE AND LOAD CONDUCTORS.

LINE LEGEND	
	TREE LINE
	CONTOUR MAJOR
	CONTOUR MINOR
	BOTTOM OF BANK
	STORM DRAINAGE PIPE
	OVERHEAD UTILITY WIRES
	WIRE FENCE

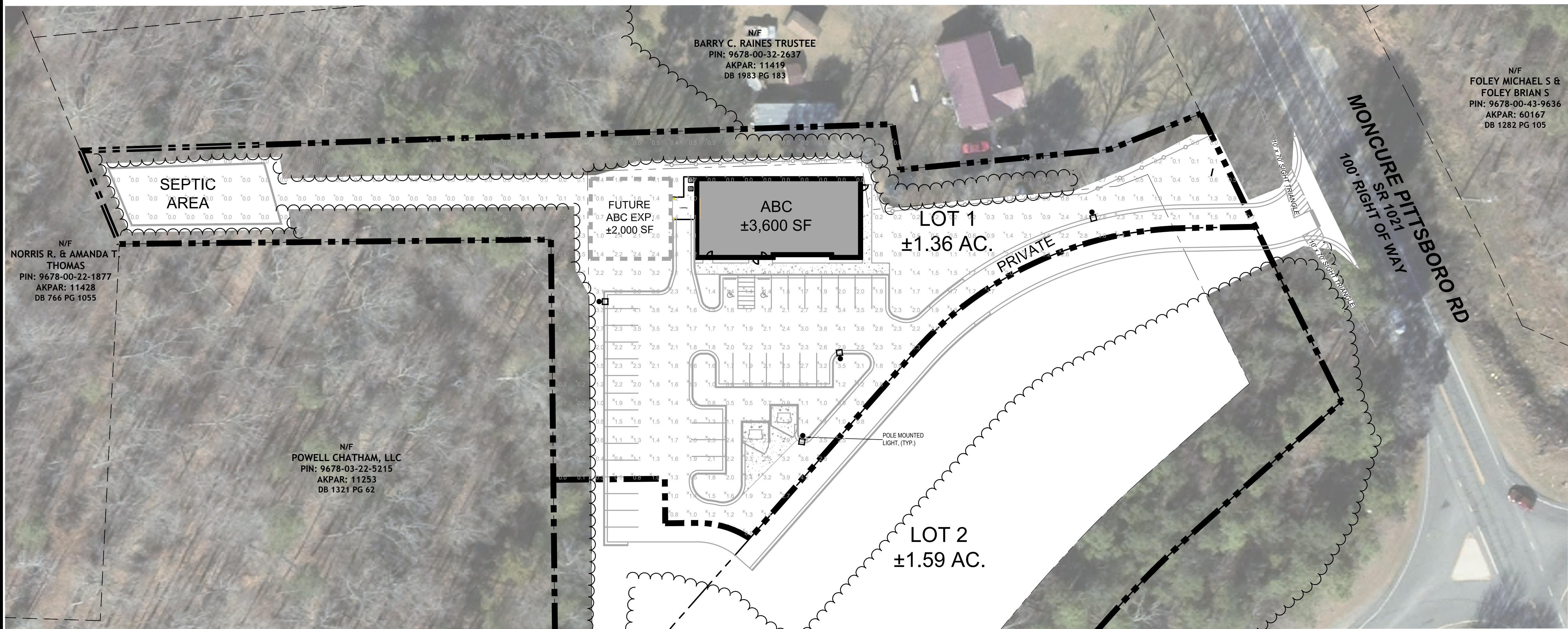
**NOTE:**  
THIS LAYOUT REFLECTS THE FUTURE RECOMBINATION OF THE EXISTING FOUR LOTS.



Vicinity Map  
Not To Scale



# LIGHTING EXHIBIT FOR LOT 1 MONCURE ABC CHATHAM COUNTY, NORTH CAROLINA APRIL 15, 2020

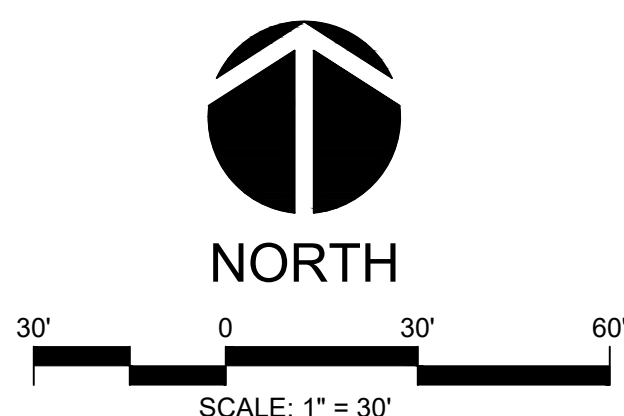


**SITE DATA:**

OWNER:	LIBERTY ENTERPRISE, INC. 2208 OAK STREAM LANE APEX, N.C. 27523
SITE ADDRESS:	US HIGHWAY 64 E APEX, NC 27502
AKPAR:	11417, 11503, 83475, 11505
TOTAL DEVELOPMENT AREA:	± 4.62 AC.
ZONING:	NB

**PROPOSED SITE:**

PROPOSED ABC SITE LOT #1:	± 1.36 AC.
PROPOSED POND SITE LOT #2:	± 1.59 AC.
FUTURE DEVELOPMENT LOT #3:	± 0.61 AC.
FUTURE DEVELOPMENT LOT #4:	± 1.06 AC.
GENERAL RETAIL (PROPOSED 1-STORY):	± 3,600 SF
GENERAL RETAIL (FUTURE EXPANSION):	± 2,000 SF
IMPERVIOUS AREA (PHASE 1 ONLY):	
LOT #1:	± 22,416 SF (±38%)
LOT #2:	± 4,324 SF (± 6%)
LOT #3:	± 1,605 SF (± 6%)
R.O.W.:	± 1,455 SF



**PRELIMINARY**  
FOR REVIEW ONLY  
NOT RELEASED  
FOR CONSTRUCTION

