

PROPERTY EXTENDS TO THE NORTH AND ALL LIGHTING VALUES ARE ZERO

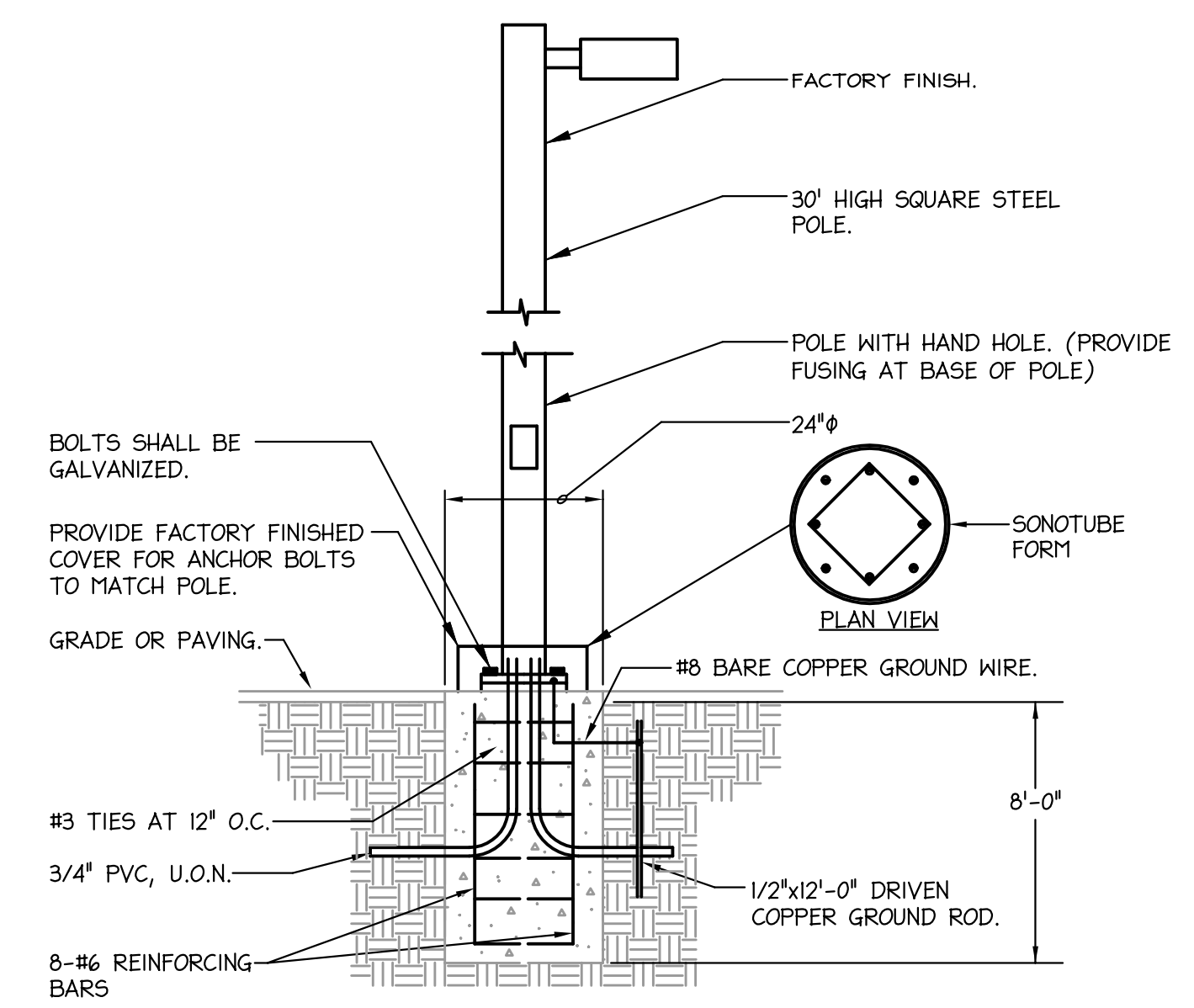
Property Line - West

Property Line - East

PROPERTY EXTENDS TO THE SOUTH AND ALL LIGHTING VALUES ARE ZERO

Symbol	Label	QTY	Catalog Number	Description	Lamp	Lumens per Lamp	Wattage	Mounting Height	Pole Spec
□	A	33	LCN4-44L-4K-035-4-U	Large LNC4 Litepak	C-70-CRI	5502	49.333	12' on wall	N/A
◊	B	5	LCN4-44L-4K-035-3-U	Large LNC4 Litepak	C-70-CRI	5557	49.333	12' on wall	N/A
◊	C	1	RAR-2480L-240-4K-4-BC	RATIO AREA lens gaskets and Back Light Shields	X-70-CRI	17647	226.9	30' on pole	Hubbell-SSS-H-30-40-B; 30' high 4" square steel pole w/ 0.188" gauge.
◊	D	7	RAR2-480L-340-4K-4W-U	RATIO AREA		48424	347.1	30' on pole	

Description	Symbol	Avg	Max	Min	Max/Min	Avg/Min
Open Storage - South	+	2.5 fc	7.3 fc	0.2 fc	36.5:1	12.5:1
Property Line - North	+	0.0 fc	0.0 fc	0.0 fc	N/A	N/A
Property Line - East	+	0.0 fc	0.1 fc	0.0 fc	N/A	N/A
Property Line - South	+	0.0 fc	0.0 fc	0.0 fc	N/A	N/A
Property Line - West	+	0.0 fc	0.1 fc	0.0 fc	N/A	N/A
Storage - Central	+	2.0 fc	6.6 fc	0.2 fc	43.0:1	10.0:1
Storage - NorthWest	+	2.2 fc	6.9 fc	0.4 fc	17.3:1	5.5:1



2 POLE BASE DETAIL

NTS

NOTE:
IF BASE IS PROVIDED BY WAKE FOREST POWER THEN THEY MAY USE THEIR STANDARD SCREW IN ANCHOR BASE.

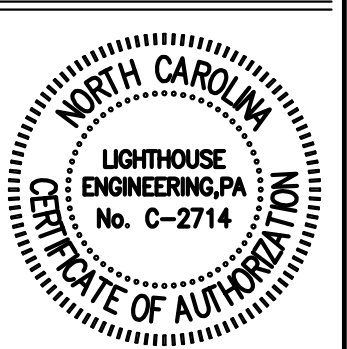
CONTRACTOR SHALL COORDINATE POLE BOLT TEMPLATE PRIOR TO FORMING BASE.

1 ELECTRICAL SITE LIGHTING PLAN

1/40"=1'0"

GENERAL NOTES (SITE PLAN):

- LIGHT FIXTURES SHALL BE A FULL-CUTOFF AND MOUNTED AT 90 DEGREES.



Michael Gress

437 Lower Thrift Road
New Hill, NC 27562
919-427-2699 Cell

GRESS STORAGE
CHATHAM COUNTY, NORTH CAROLINA

REVISIONS

DATE
04-14-20
DRAWN BY
NHS
PROJECT NO.
ZY-2003

SHEET TITLE
ELECTRICAL SITE LIGHTING PLAN

SHEET

SLI.01

ZY-2003-SLI-01.dwg
 Apr 14, 2020 8:26am

DATE: LOCATION: TYPE: PROJECT: CATALOG #: **RATIO Series** AREA/SITE LIGHTER **TYPE C AND D**

FEATURES

- Low profile LED recessed luminaire with a variety of IES distributions for lighting applications such as retail, commercial and campus parking lots.
- Featuring Micro Strike Optics which maximizes target zone illumination with minimal losses at the house-side, reducing light trespass issues.
- Visus comfort standard.
- Compact and lightweight design with low EIP.
- 36 rated for high vibration applications including bridges and overpasses.
- Control options including pixels control, occupancy sensing, NX Distributed Intelligence™ and 7-pin with networked controls.
- Best in class surge protection available.

RELATED PRODUCTS

UL US IP66 DLG DLG

CONTROL TECHNOLOGY

SiteSync NX DISTRIBUTED INTELLIGENCE WISCAPE

SPECIFICATIONS

CONSTRUCTION

- Recessed form fits into the traditional shadow box factor keeping a similar but updated style and appearance, ideal for retrofit applications.
- Die-cast housing with hidden vertical heat fins that are optimal for heat dissipation while keeping a clean smooth outer surface.
- Corrosion resistant, die-cast aluminum housing with powder coat paint finish.

OPTICS

- Entire optical assembly illuminates to create a large luminous surface area resulting in a low glare appearance without sacrificing optical performance.
- 80, 160, 320 or 480 midpower LEDs.
- 3000K, 4000K or 5000K (70 CRI) CCT.
- Zero uplight at 0 degrees of tilt.
- Field rotatable optics.

INSTALLATION

- Standard square arm mount, compatible with B3 drill pattern.
- Cylindrical universal mounting block for ease of installation during retrofit applications. Available as an option or accessory for square and round poles.
- KnuKlic® arm fitter option available for 2.38" OD tenon. Max tilt of 60 degrees with 4 degree adjustable increments. (Restrictions apply for 7-pin options).

ELECTRICAL

- Universal 120-277 VAC or 347-480 VAC input voltage, 50/60 Hz.
- Ambient operating temperature -40°C to 40°C.
- Drivers have greater than 90% power factor and less than 20% THD.
- LED drivers have output power over-voltage, over-current protection and short circuit protection with auto recovery.
- Field replaceable surge protection device provides 20kA protection meeting ANSI IEEE C62.41.2 Category C High and Surge Location Category C3. Automatically takes fixture offline for protection when device is compromised.

CONTROLS

- Photo control, occupancy sensor and wireless available for complete on/off and dimming control.
- 7-pin ANSI CDEI-41-2013 photocell receptacle option available for twist lock photocells or wireless control modules (control accessories sold separately).
- 0-10V dimming leads available for use with control devices provided by others, must specify lead length.
- SiteSync™ wireless control system is available via 7-pin. See ordering information and details at www.rubbellighting.com/sitesync.
- NX Distributed Intelligence™ available with in future wireless control modules, features dimming and occupancy sensor.

CONTROLS (CONT'D)

- WISCAPE™ available with in future wireless control modules, features dimming and occupancy sensor via 7-pin.

CERTIFICATIONS

- DLC® (DesignLights Consortium) Qualified, with some Premium Qualified configurations. Please refer to the DLC website for specific product qualifications at www.designlights.org.
- Listed to UL9548 and CSA C22.2 247500-2-4 for wet locations and 40°C ambient temperatures.
- 3G rated for ANSI C136.31 high vibration applications.
- Meets IEA recommendations using 3K CCT configuration at 0 degrees of tilt.

WARRANTY

- 5 year limited warranty.
- See www.rubbellighting.com for additional information.

KEY DATA	
Lumen Range	3,000 - 32,000
Wattage Range	25 - 227
Efficacy Range (LPW)	118 - 155
Fixture Projected Life (Hours)	170-238K
Weights lbs. (kg)	13.5 - 24.6 (6.1-10.9)

Page 17 Rev. 12/18/19 HUBBELL Lighting

DATE: LOCATION: TYPE: PROJECT: CATALOG #: **LNCA4** LARGE LED LITEPAK **TYPE A**

ORDERING GUIDE

Example: LNCA3-24L-3K-035-2-U-DB-PCU

Series	# LEDs	CCT/CRI	Drive Current	IES Distribution	Voltage	Finish
LNCA4 Large Litepak Walkpak	36L 30LED; 44L 44LED;	3K 3000K nominal, 70 CRI; 4K 4000K nominal, 70 CRI; 5K 5000K nominal, 70 CRI	035 350mA; 065 650mA; 105 1050mA	2 Type II; 3 Type III; 4 Type IV	U 120-277V; 1 120V; 2 208V; 3 240V; 4 277V; 5 480V; 6 347V	DB Dark Bronze Textured; BL Black Textured; WH White Textured; GR Gray Textured; PS Platinum Silver Smooth; CC Custom Color

ORDERING INFORMATION

Catalog Number	Lumens	LPW	Wattage	No. of LEDs	CCT/CRI	Voltage	Distribution	Weight lbs. (kg)	No. of Drivers	Current
LNCA3-36L-4K	19754	86.3	524.5	36	4000K	120-277V	IV	219 (8.2)	2	1050mA
LNCA4-44L-7PR	13477	88.3	152.6	44	4000K	120-277V	IV	219 (8.2)	2	1050mA
LNCA4-44L-8SCP	13477	88.3	152.6	44	4000K	120-277V	IV	219 (8.2)	2	1050mA

CONTROLS

Hubbell Control Solutions - Accessories (Sold Separately)

NX Distributed Intelligence™

NXOFM-IRD-UVN On-Fixture Module (7-pin) On / Off / Dim / Daylight Sensor with HubNet® Radio and Bluetooth® Radio, 120 - 480VAC

wISCAPE™ Lighting Control

WIR-REM-L On-Fixture Module (7-pin or 5-pin) On / Off / Dim / Daylight Sensor with wISCAPE Radio, 10 - 480VAC

SiteSync™ 7-Pin Module:

- SiteSync features in a new form.
- Available as an accessory for new construction or retrofit applications (with existing 7-pin receptacle).
- Does not interface with occupancy sensors.

Page 2/6 Rev. 11/28/19 HUBBELL Lighting

DATE: LOCATION: TYPE: PROJECT: CATALOG #: **LNCA4** LARGE LED LITEPAK **TYPE A AND B**

FEATURES

- Litepak LNCA4 features four different lumen packages and multiple distributions and CCT for maximum light level and mounting height flexibility.
- Capable of replacing up to 400W HID solutions at over 70% energy savings.
- Easy to install and retrofit existing HID luminaires with same footprint.
- Zero uplight Compact LED Architectural Walkpak.
- Inverted "up" mounting capable.
- Control capabilities offer additional energy savings options.
- Ideal applications include: perimeter illumination, schools, factories, hospitals, warehouses and retail applications.

RELATED PRODUCTS

UL US IP66 DLG DLG

CONTROL TECHNOLOGY

SiteSync NX DISTRIBUTED INTELLIGENCE WISCAPE

SPECIFICATIONS

CONSTRUCTION

- Die-cast aluminum housing protects components and provides an architectural appearance.
- Casing the thermally conductive LED heat to optimize performance and long life.
- Powder paint finish provides durability in outdoor environments.
- Four 1/2" conduit entries (top, bottom, and sides) provided for surface conduit.
- Zero uplight distributions using individual adjustable LED optics provide IES type I, II and IV distributions.
- CS - Frosted acrylic diffuser option for reducing glare.
- CSU - Frosted acrylic diffuser for inverted "up" mounting applications (lens required).

OPTICS

- 3000K, 4000K and 5000K CCT nominal with 70 CRI.
- 36 and 44 LED configurations available.

INSTALLATION

- Quick-mount adapter with gasket seal provides easy installation to wall or to recessed junction box (4" square junction box).
- Feature attaches by two Allen-head hexon fasteners for tamper resistance.
- Designed for direct j-box mount or conduit feed on all four sides in single SKU.

ELECTRICAL

- 120-277, 347 and 480 voltage, 50/60Hz, 0-10V dimming drivers.
- L96 at 25,000 hrs. (Projected per IESNA TM-21-19, see table on page 2 for all values).
- Listed to UL9548 and CSA C22.2 247500-2-4 for wet locations.
- Ambient operating temperature -40°C to 40°C.

CONTROLS

- Button photocell control for dusk to dawn energy savings.
- 7-pin photo-receptacle available for twist lock photocell and controls by others.
- Occupancy sensor options available for complete on/off and dimming control.
- Integral Battery Backup provides emergency path of egress lighting for the required 90 minutes.
- SiteSync™ pre-commissioned wireless controls (with or without network).
- In addition, the LNCA4 can be specified with SiteSync™ wireless control system for reduction in energy and maintenance cost while optimizing light quality 24/7.
- See ordering information or visit www.rubbellighting.com/sitesync for more details.

CERTIFICATIONS

- DesignLights Consortium® (DLC) qualified. Please refer to the DLC website for specific product qualifications at www.designlights.org.
- Listed to UL9548 and CSA C22.2 247500-2-4 for wet locations.
- IP65 Assembly.
- IEA Approved (8000K configurations).
- 5 year limited warranty.
- See www.rubbellighting.com for additional information.

KEY DATA	
Lumen Range	4,269 - 14,793
Wattage Range	40.3 - 170
Efficacy Range (LPW)	75.2 - 117
Fixture Projected Life (Hours)	196-25K
Weights lbs. (kg)	270 (12.2)

Page 1/6 Rev. 11/28/19 HUBBELL Lighting

DATE: LOCATION: TYPE: PROJECT: CATALOG #: **RATIO Series** AREA/SITE LIGHTER **TYPE C**

ORDERING GUIDE

Example: RAR180L-25-3K7-2-UVN-45Q-8L-AXXW-BC

Series	# LEDs	CCT/CRI	Drive Current	IES Distribution	Voltage	Finish
RAR2 Ratio Area Site 1	36L 30LED; 44L 44LED;	3K 3000K nominal, 70 CRI; 4K 4000K nominal, 70 CRI; 5K 5000K nominal, 70 CRI	035 350mA; 065 650mA; 105 1050mA	2 Type II; 3 Type III; 4 Type IV	U 120-277V; 1 120V; 2 208V; 3 240V; 4 277V; 5 480V; 6 347V	DB Dark Bronze Textured; BL Black Textured; WH White Textured; GR Gray Textured; PS Platinum Silver Smooth; CC Custom Color

ORDERING INFORMATION CONTINUED

Catalog Number	Lumens	LPW	Wattage	LED Count	CCT/CRI	Voltage	Distribution	Mounting	Finish
RAR100-4K-3	12,000	100W	160L	36	4000K/70CRI	120-277V	Type 3	Square Arm	Bronze
RAR100-4K-4W	12,000	100W	160L	44	4000K/70CRI	120-277V	Type 4W	Square Arm	Bronze
RAR140-4K-3	18,000	140W	320L	36	4000K/70CRI	120-277V	Type 3	Square Arm	Bronze
RAR140-4K-4W	18,000	140W	320L	44	4000K/70CRI	120-277V	Type 4W	Square Arm	Bronze
RAR165-4K-3	21,000	165W	320L	36	4000K/70CRI	120-277V	Type 3	Square Arm	Bronze
RAR165-4K-4W	21,000	165W	320L	44	4000K/70CRI	120-277V	Type 4W	Square Arm	Bronze

Page 2/6 Rev. 12/18/19 HUBBELL Lighting

DATE: LOCATION: TYPE: PROJECT: CATALOG #: **RATIO Series** AREA/SITE LIGHTER **TYPE D**

ORDERING GUIDE

Example: RAR180L-25-3K7-2-UVN-45Q-8L-AXXW-BC

Series	# LEDs	CCT/CRI	Drive Current	IES Distribution	Voltage	Finish
RAR2 Ratio Area Site 2	36L 30LED; 44L 44LED;	3K 3000K nominal, 70 CRI; 4K 4000K nominal, 70 CRI; 5K 5000K nominal, 70 CRI	035 350mA; 065 650mA; 105 1050mA	2 Type II; 3 Type III; 4 Type IV	U 120-277V; 1 120V; 2 208V; 3 240V; 4 277V; 5 480V; 6 347V	DB Dark Bronze Textured; BL Black Textured; WH White Textured; GR Gray Textured; PS Platinum Silver Smooth; CC Custom Color

ORDERING INFORMATION CONTINUED

Catalog Number	Lumens	Wattage	LED Count	CCT/CRI	Voltage	Distribution	Mounting	Finish
RAR100-4K-3	12,000	100W	36	4000K/70CRI	120-277V	Type 3	Square Arm	Bronze
RAR100-4K-4W	12,000	100W	44	4000K/70CRI	120-277V	Type 4W	Square Arm	Bronze
RAR140-4K-3	18,000	140W	36	4000K/70CRI	120-277V	Type 3	Square Arm	Bronze
RAR140-4K-4W	18,000	140W	44	4000K/70CRI	120-277V	Type 4W	Square Arm	Bronze
RAR165-4K-3	21,000	165W	36	4000K/70CRI	120-277V	Type 3	Square Arm	Bronze
RAR165-4K-4W	21,000	165W	44	4000K/70CRI	120-277V	Type 4W	Square Arm	Bronze

Page 2/6 Rev. 12/18/19 HUBBELL Lighting

DATE: LOCATION: TYPE: PROJECT: CATALOG #: **LNCA4** LARGE LED LITEPAK **TYPE B**

ORDERING GUIDE

Example: LNCA3-24L-3K-035-2-U-DB-PCU

Series	# LEDs	CCT/CRI	Drive Current	IES Distribution	Voltage	Finish
LNCA4 Large Litepak Walkpak	36L 30LED; 44L 44LED;	3K 3000K nominal, 70 CRI; 4K 4000K nominal, 70 CRI; 5K 5000K nominal, 70 CRI	035 350mA; 065 650mA; 105 1050mA	2 Type II; 3 Type III; 4 Type IV	U 120-277V; 1 120V; 2 208V; 3 240V; 4 277V; 5 480V; 6 347V	DB Dark Bronze Textured; BL Black Textured; WH White Textured; GR Gray Textured; PS Platinum Silver Smooth; CC Custom Color

ORDERING INFORMATION CONTINUED

Catalog Number	Lumens	LPW	Wattage	No. of LEDs	CCT/CRI	Voltage	Distribution	Weight lbs. (kg)	No. of Drivers	Current
LNCA3-36L-4K	19754	86.3	524.5	36	4000K	120-277V	IV	219 (8.2)	2	1050mA
LNCA4-44L-7PR	13477	88.3	152.6	44	4000K	120-277V	IV	219 (8.2)	2	1050mA
LNCA4-44L-8SCP	13477	88.3	152.6	44	4000K	120-277V	IV	219 (8.2)	2	1050mA

CONTROLS

Hubbell Control Solutions - Accessories (Sold Separately)

NX Distributed Intelligence™

NXOFM-IRD-UVN On-Fixture Module (7-pin) On / Off / Dim / Daylight Sensor with HubNet® Radio and Bluetooth® Radio, 120 - 480VAC

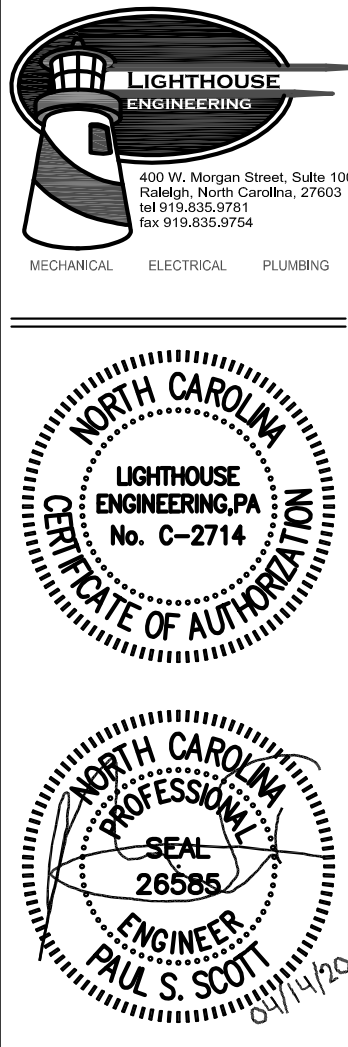
wISCAPE™ Lighting Control

WIR-REM-L On-Fixture Module (7-pin or 5-pin) On / Off / Dim / Daylight Sensor with wISCAPE Radio, 10 - 480VAC

SiteSync™ 7-Pin Module:

- SiteSync features in a new form.
- Available as an accessory for new construction or retrofit applications (with existing 7-pin receptacle).
- Does not interface with occupancy sensors.

Page 2/6 Rev. 11/28/19 HUBBELL Lighting



Michael Gress
437 Lower Thrift Road
New Hill, NC 27562
919-427-2699 Cell

GRESS STORAGE
CHATHAM COUNTY, NORTH CAROLINA

REVISIONS

DATE
04-14-20

DRAWN BY
NHS

PROJECT NO.
ZY-2003

SHEET TITLE
ELECTRICAL SITE LIGHTING PLAN

SHEET
SLI.02